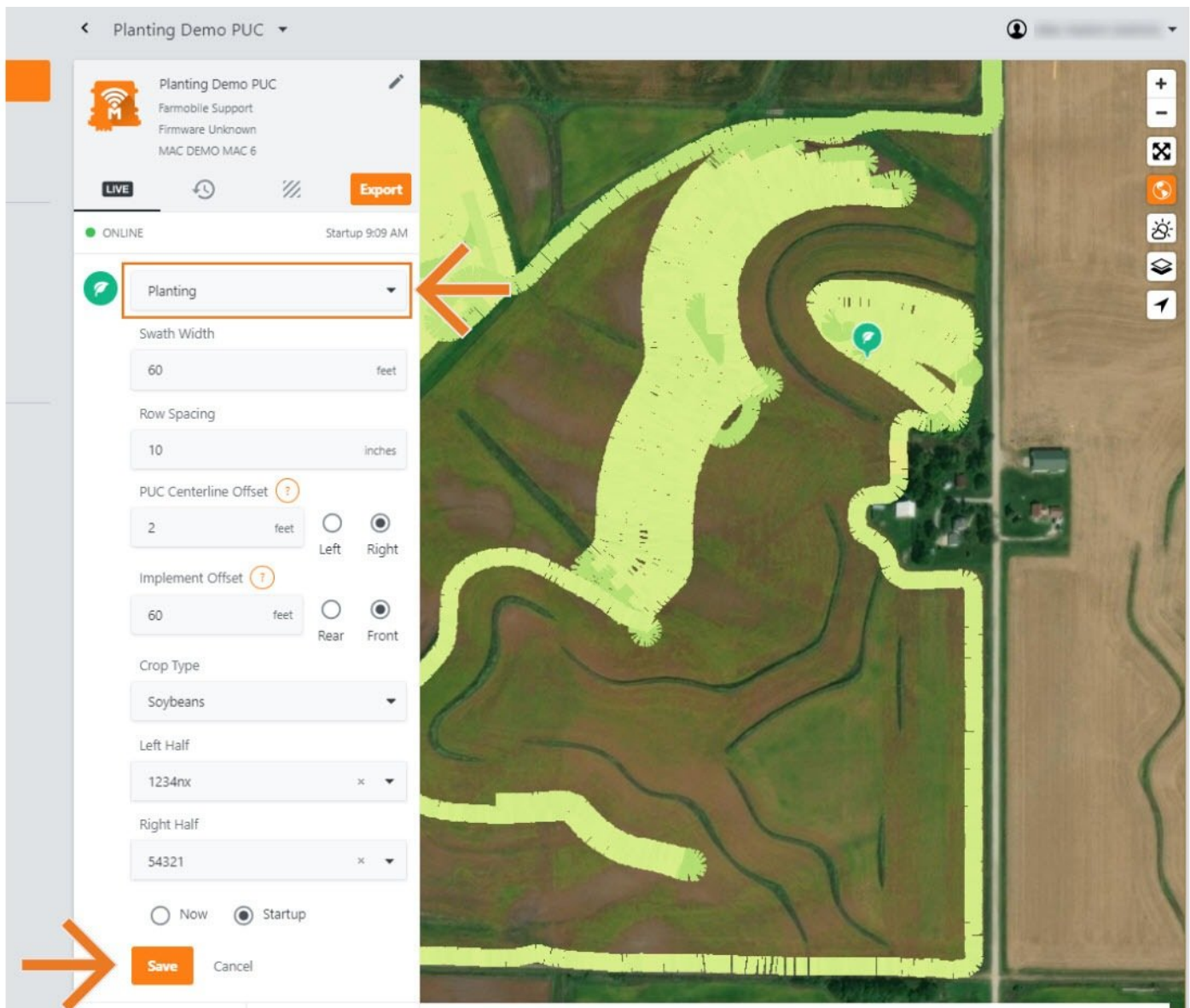




Activity Type

This guide will walk you through the steps required to make a live machine activity adjustment.

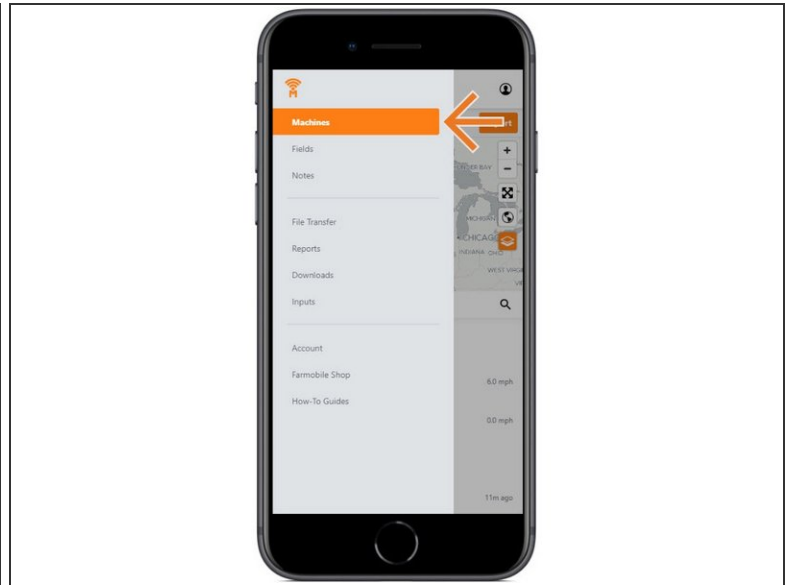
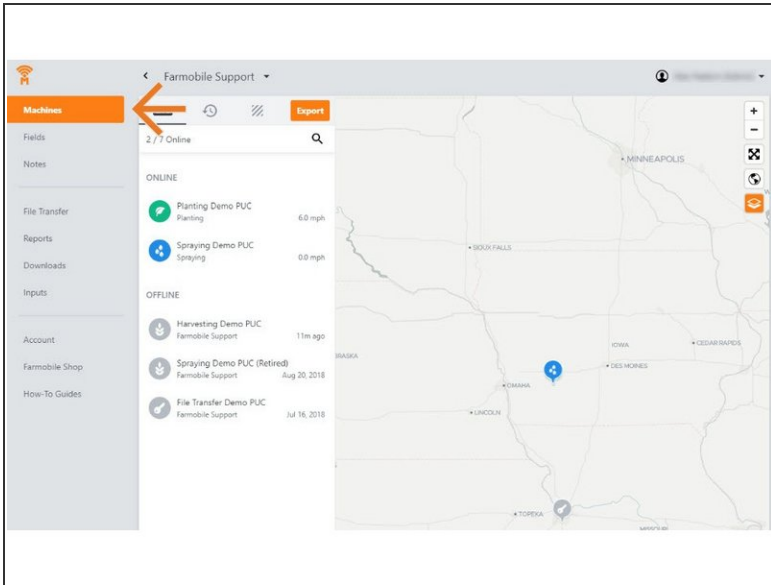
Written By: Support



INTRODUCTION

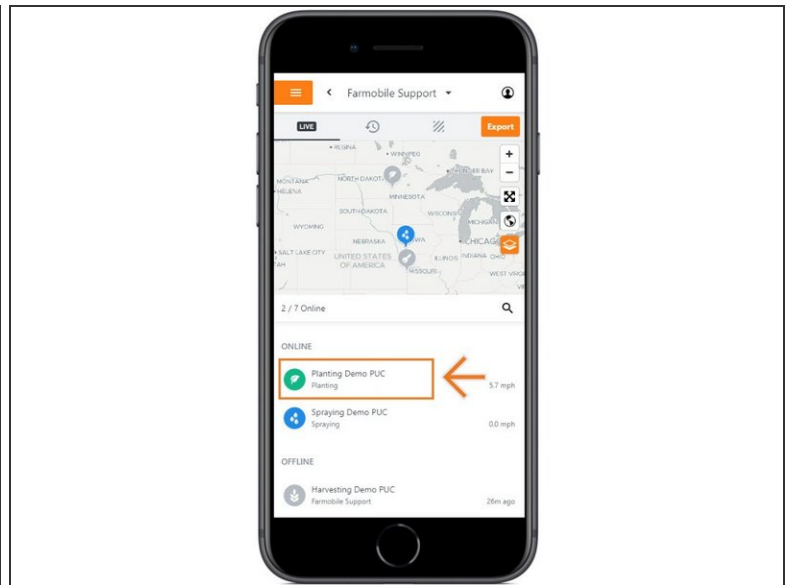
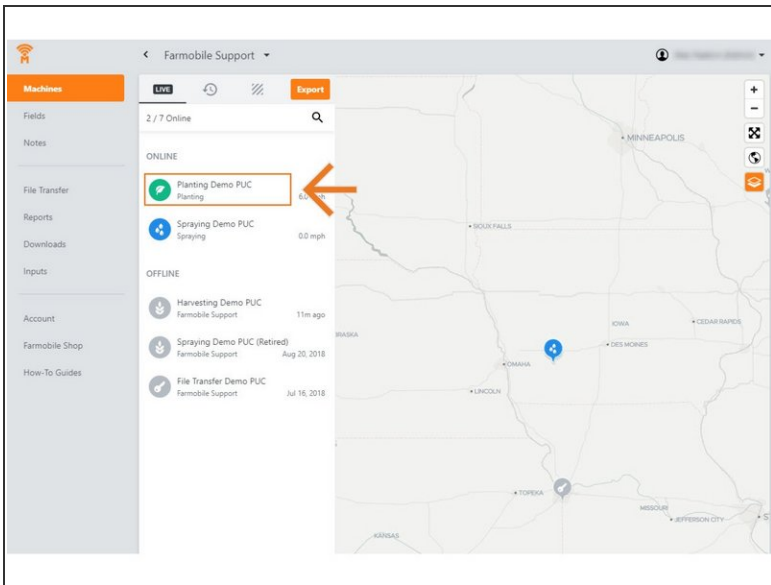
- Live Machine Adjustments are only available at the Machine level.
- Activity Adjustments carry forward to the end of the day.
 - Per PUC.
- The type of Activity Adjustment you can make depends on the current activity type:
 - Operating: From Operating to Planting, Tillage, Harvesting, Foraging, Spraying, Spreading, or Bailing.
 - Planting: From Planting to Spraying, Spreading, or Operating.
 - Harvest: From Harvest to Operating.
 - Spreading: From Spreading to Spraying, Planting, or Operating.
 - Spraying: From Spraying to Spreading, Planting, or Operating

Step 1 — Select Machines from the Farmobile DataEngineSM Menu



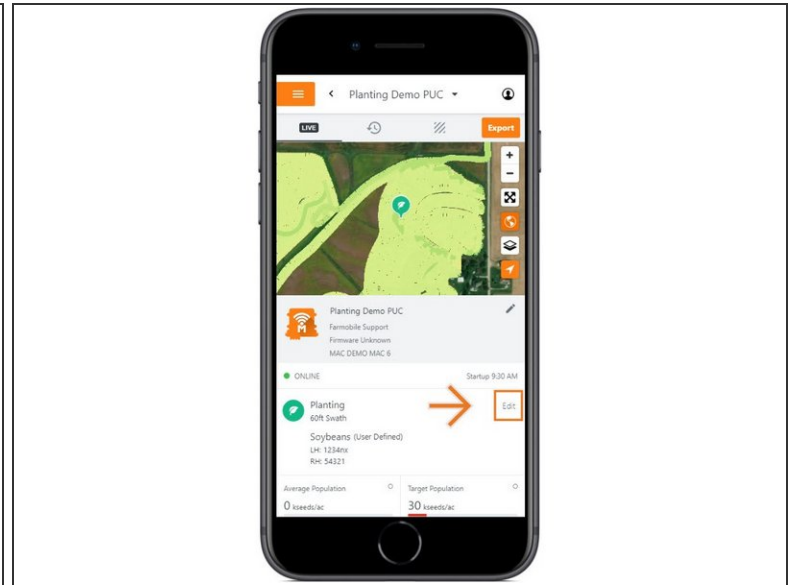
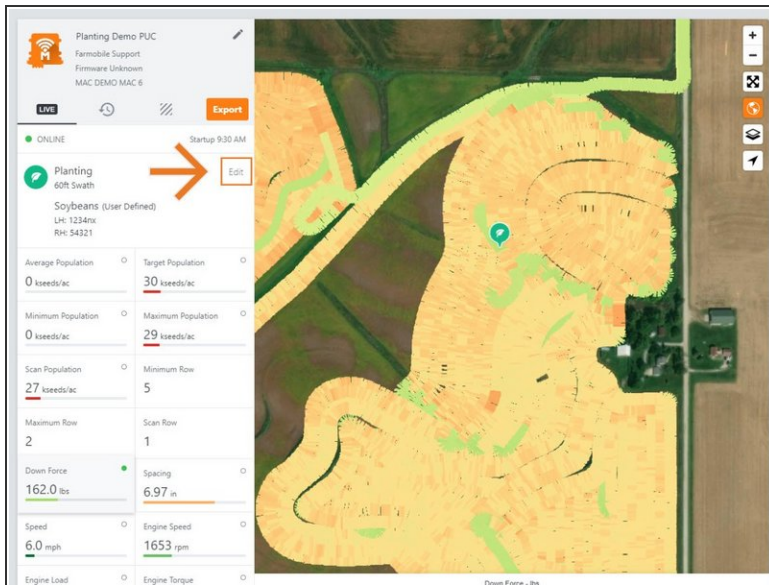
- Selecting Machines from the Farmobile DataEngine menu will open the Machines page with all of your PUCTM listed and displayed on the map.

Step 2 — Select a Machine



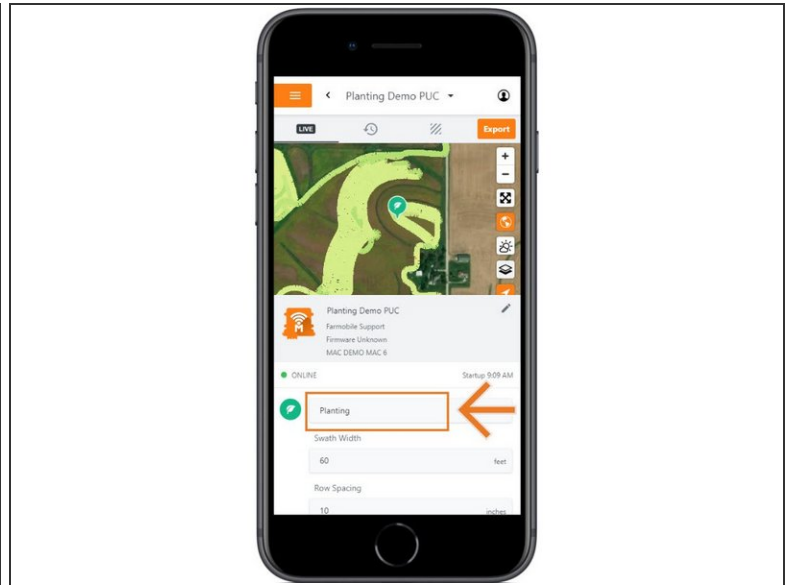
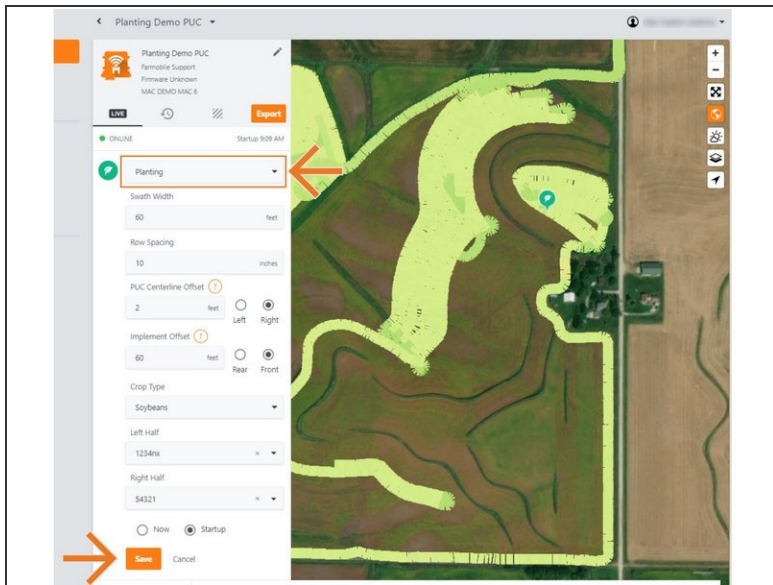
- Select a machine to open the Machine details page.

Step 3 — Select Edit



- Select edit to expand the adjustment options.
- The available options to adjust vary based on the current activity type.

Step 4 — Make Activity Adjustment and Save



- Click the 'Activity' drop down menu, and select a different activity type.
- Select 'Now' or 'Startup' to apply the adjustment at the correct time.
- Select 'Save'.
- The live screen and machine activity label will update and display the new activity type.