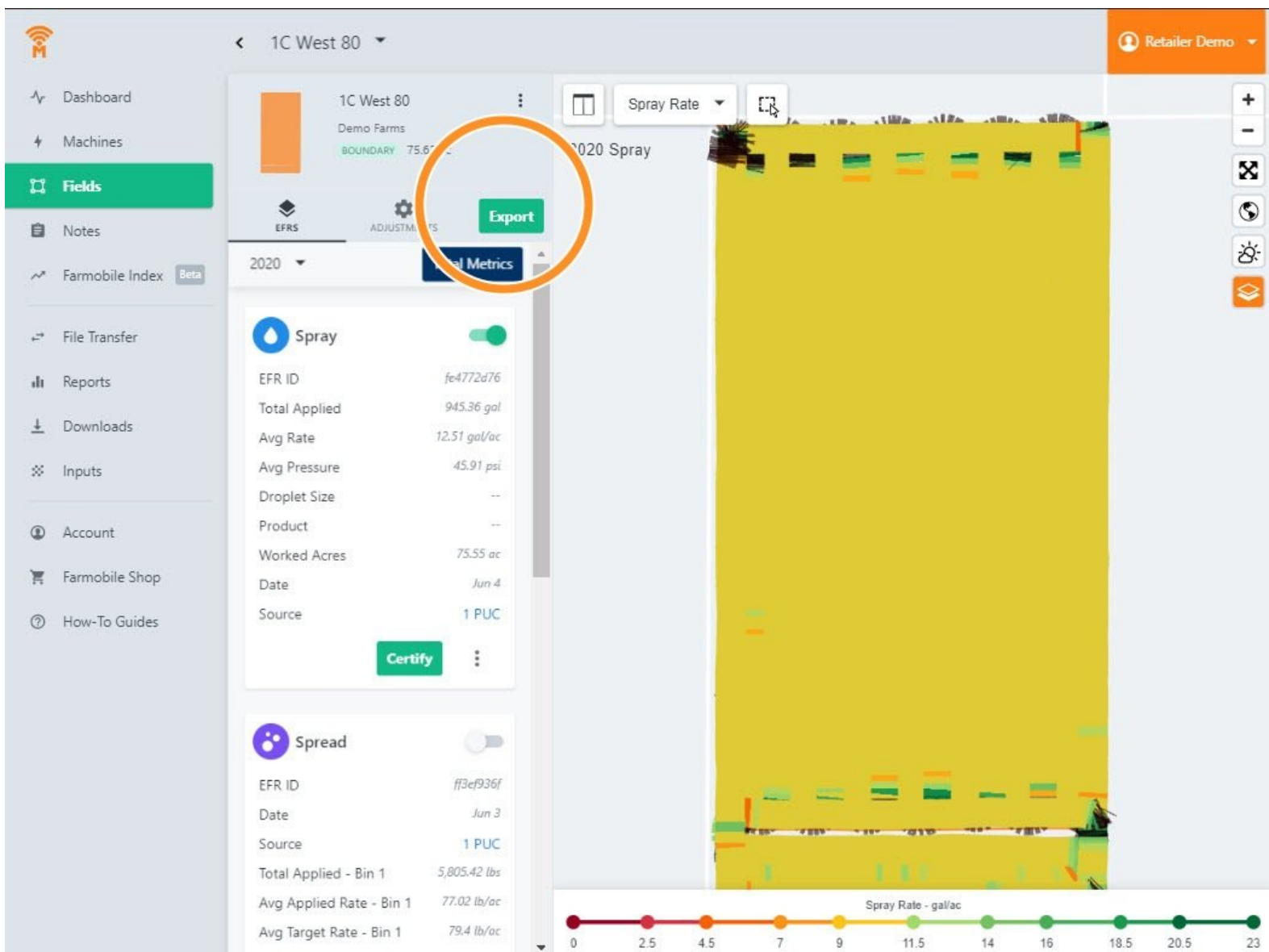




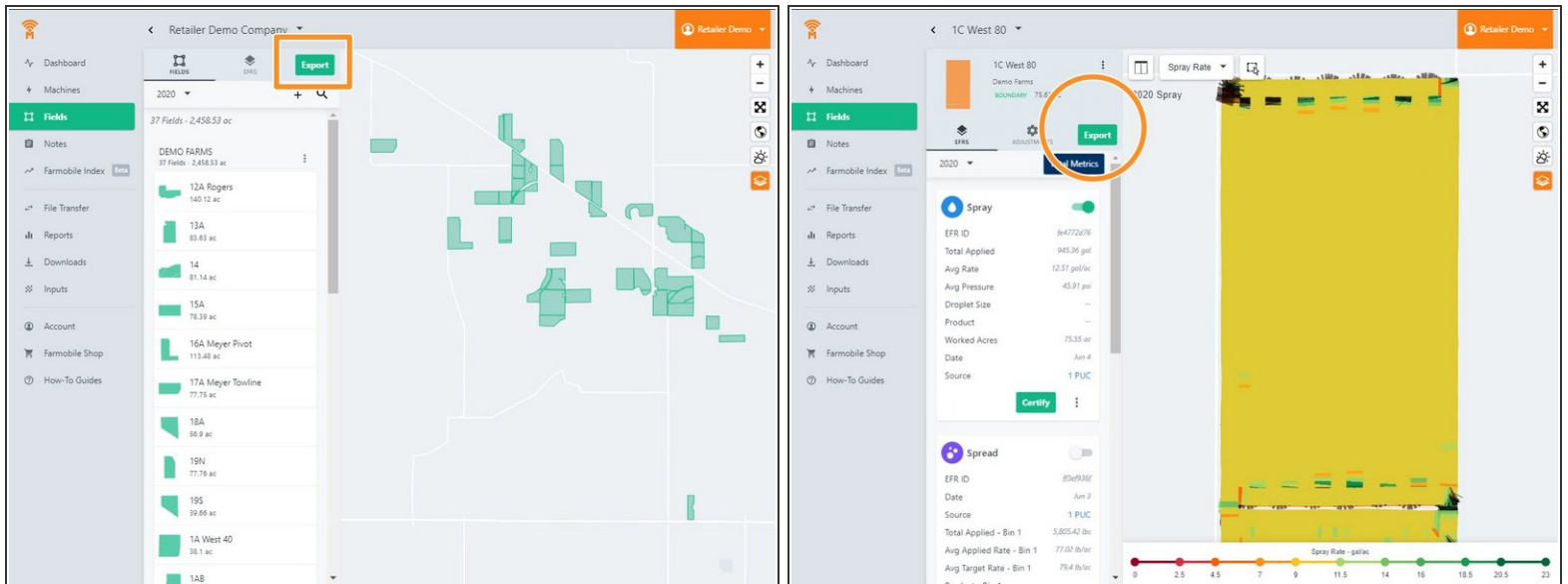
# Machine + Agronomic Data by Grower, Farm and Field

This guide will teach you how to export point-by-point agronomic and machine data that is partitioned by grower, farm, and field.

Written By: Support

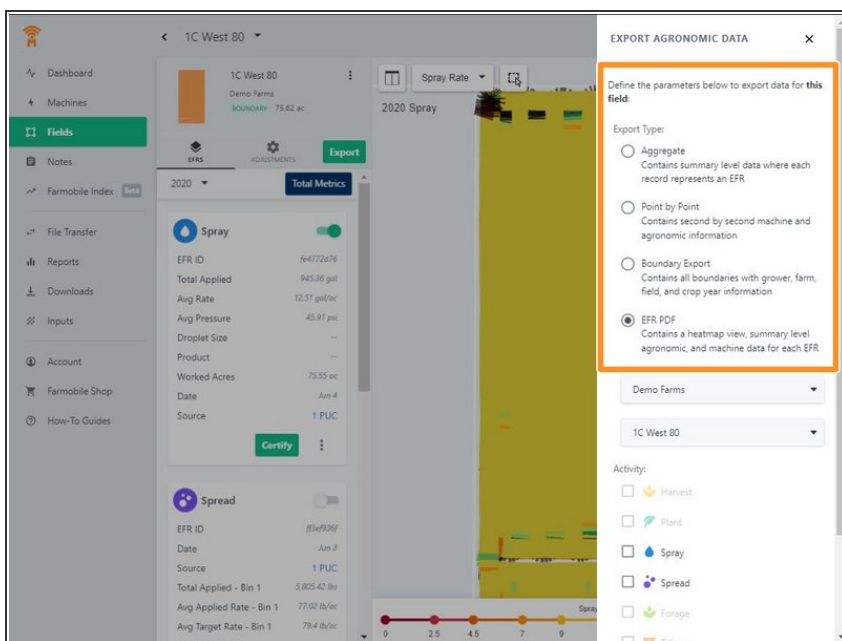


## Step 1 — Select Fields



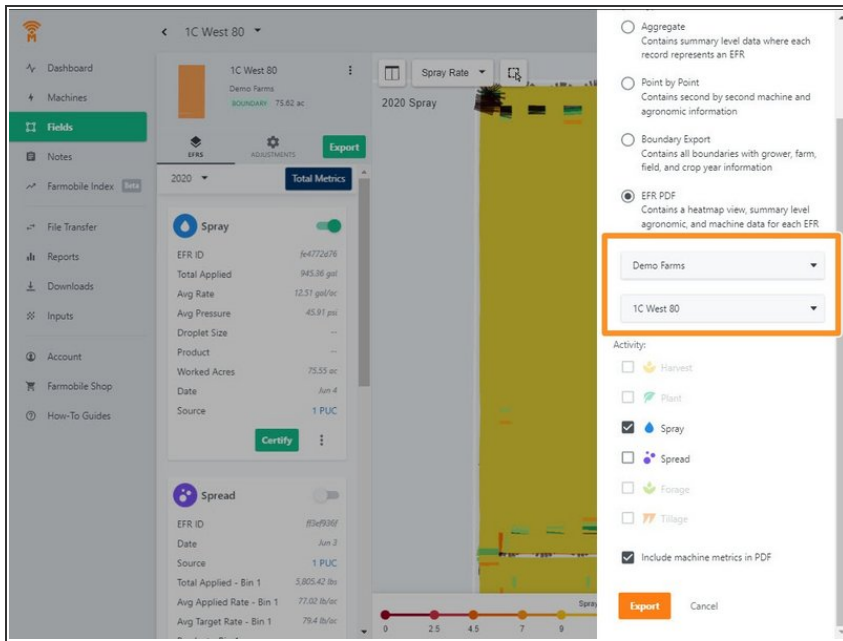
- Exports are located within the Fields entity of Farmobile DataEngine<sup>SM</sup> platform.
- Users can begin the Export process by selecting Export at the initial top view of all Fields.
- -or- Users can begin an export for an individual field by selecting the Export button atop of the listed EFRs

## Step 2 — Select Export Type



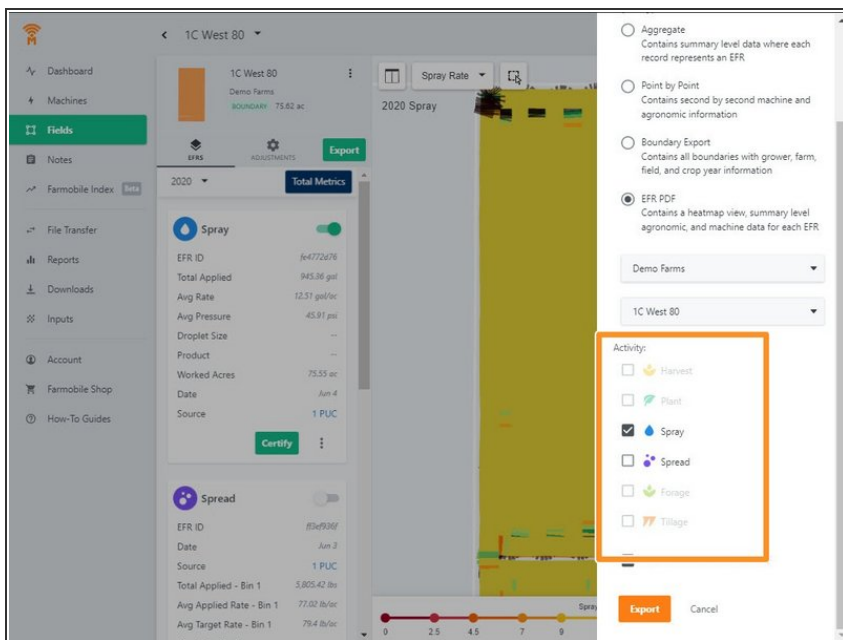
- 4 Export types are available. Aggregate, Point by Point, Boundary, and in PDF formats.
- Aggregate Summary level Data
- Point by Point (second by second) level data
- Boundary - Just the boundary polygon, no data included
- PDF Heatmap view + summarized values from a particular field/activity.

## Step 3 — Select Farms and Fields



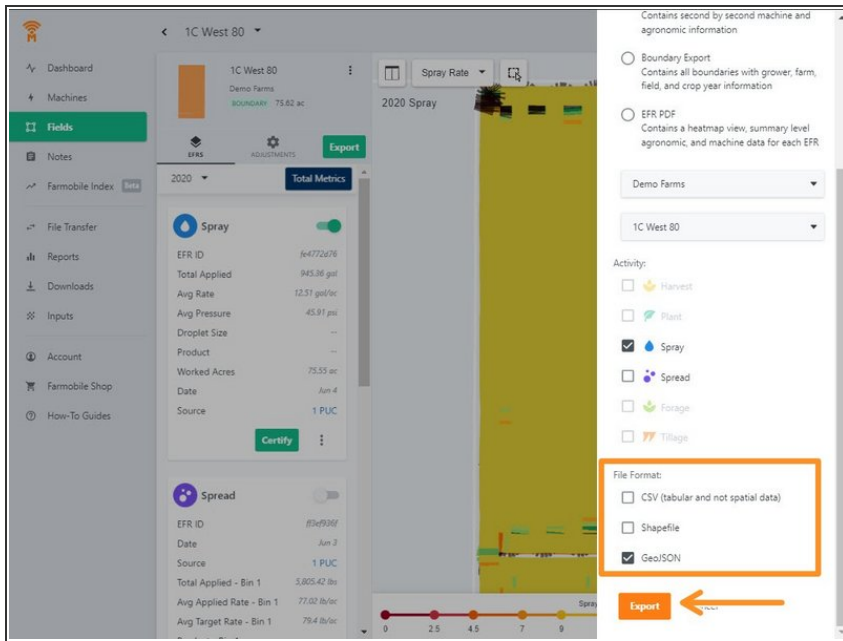
- The export function gives you the ability to choose a single Farm, Field, or and entire operation.

## Step 4 — Select Activity



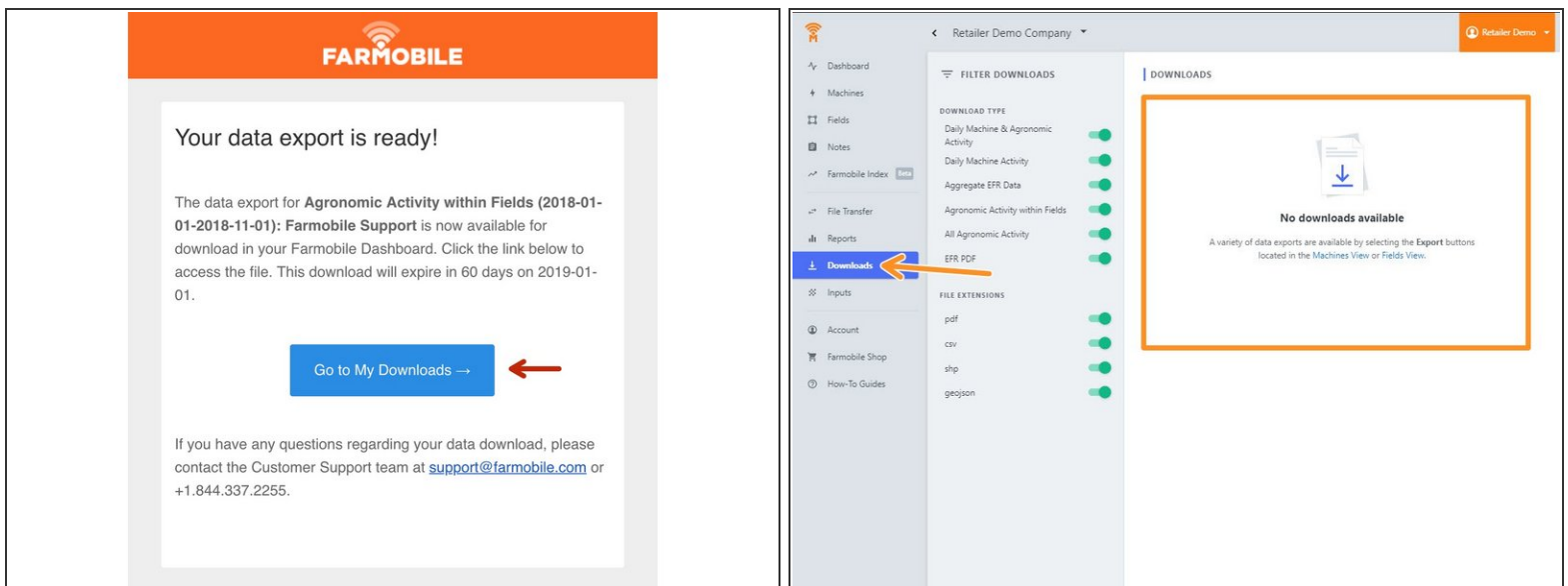
- Choose your selected activity. Multiple selections are allowed and they will be delivered at the same time.

## Step 5 — Select File Type & Select Export



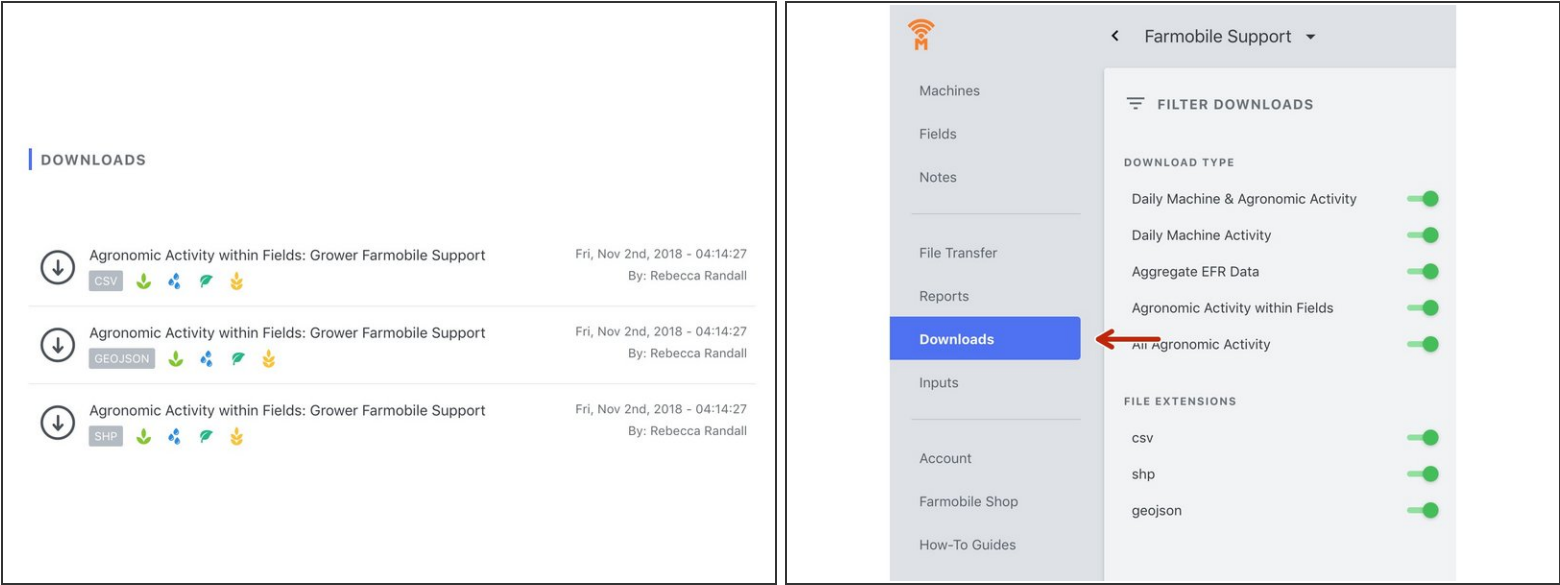
- If your Export Type section was Aggregate, Point by Point or Boundary Export, you can now select your preferred file type.
- .CSV
- Shapefile
- GeoJSON
- Click EXPORT.

## Step 6 — Retrieve Downloads via Email



- You will receive an email when your export is ready. Select the Go to My Downloads button to be rerouted to the Farmobile DataEngine platform Downloads page.

## Step 7 — Download Exports



- Clicking anywhere on your export will download your selected export directly into your browser.
- All downloads are stored on the downloads page.