



Farmobile DataStoreSM Participation Agreement

The Farmobile DataStoreSM Participation Agreement is required prior to certifying your EFR data. Follow these steps to certify your EFR data.

Written By: Support

The screenshot shows the Farmobile DataStore interface. On the left is a sidebar with navigation options: Machines, Fields (highlighted), Notes, File Transfer, Reports, Downloads, Inputs, Account, Farmobile Shop, and How-To Guides. The main area displays the 2018 Harvest data for a field named 'Harvest'. The data includes:

Field	Value
EFR ID	f1a025151
Crop	Corn
Total Production	6,211.03 bu
Avg Wet Yield	90.87 bu/ac
Avg Dry Yield	90.7 bu/ac
Avg Rate	572.66 bu/hr
Avg Moisture	15.02 %
Date	Sep 12
Activity	1 PUCs

Below the data table is a green 'Certify' button. To the right of the data is a map showing the 2018 Harvest area. A modal window titled 'FARMOBILE DATASTORE PARTICIPATION AGREEMENT' is open on the right. It contains the following text:

In order to certify your efr data, please read and accept the following terms

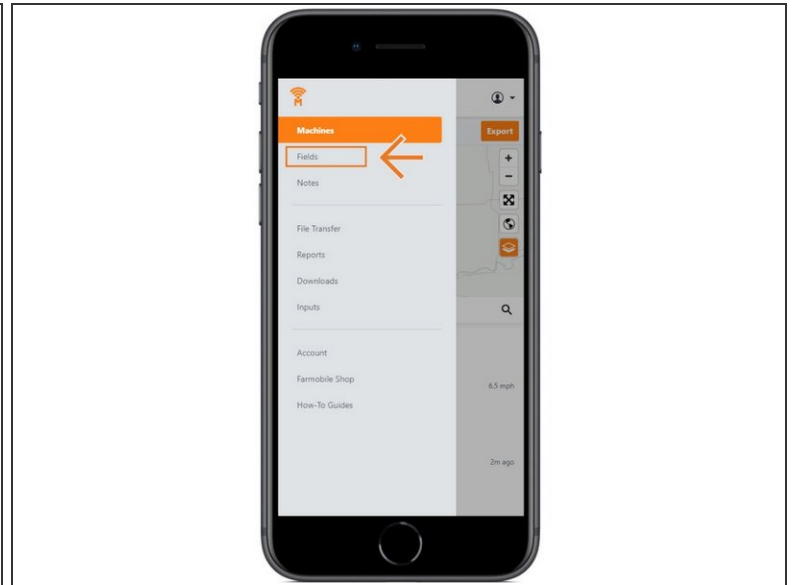
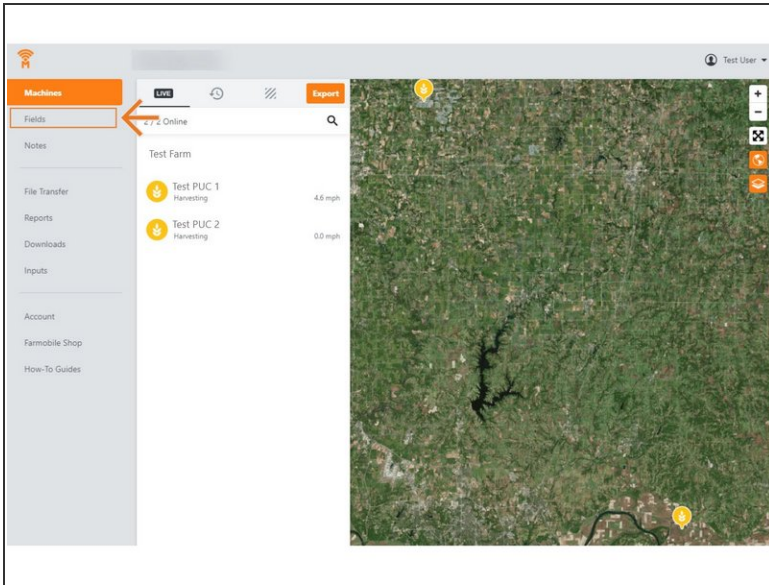
FARMOBILE DATASTORE PARTICIPATION AGREEMENT

The Farmobile DataStore Participation Agreement sets forth the rules and conditions associated with participation in the Farmobile DataStore. The Farmobile DataStore provides data owners with an opportunity to receive payment by harvesting agricultural data to others. **When you sign up to participate in the Farmobile DataStore by entering the Agreement, you are authorizing Farmobile to act on your behalf in connection with the harvesting of your data. When you certify data for placement in the Farmobile DataStore, you are acknowledging that you are the owner of the data and agree that the process of harvesting your farm data will be handled exclusively by Farmobile for a period of at least seven (7) years from the date of the Agreement. If the data is harvested, the data owner and Farmobile agree to the license agreed through the data harvesting. The contract terms are both enforceable and designed to provide a farm data harvesting program for both Farmobile's customers and those who wish to license the farm data. **Please read all of the agreement terms before you sign the Agreement. Your use constitutes your agreement to the Farmobile DataStore Participation Agreement. You agree to be bound by the terms of the agreement. Please contact us with any questions.****

☒ I have read and agree to these terms

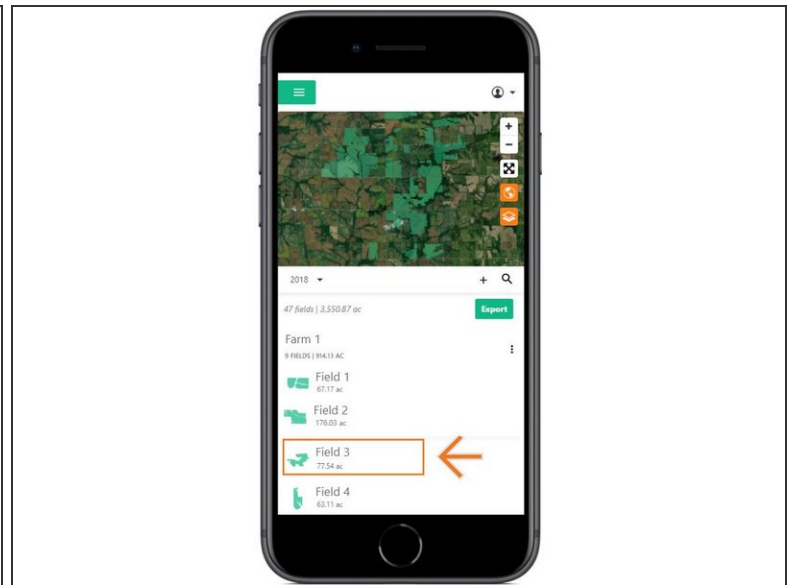
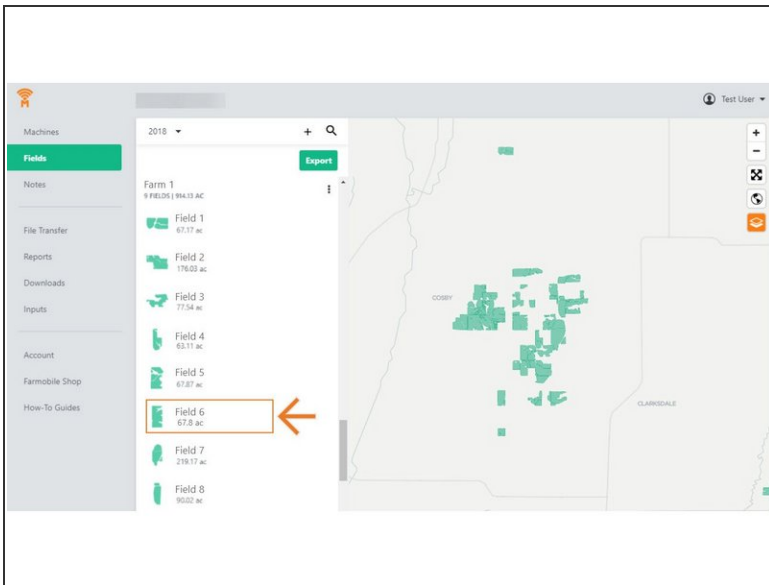
Submit Cancel

Step 1 — Select Fields from the Farmobile DataEngine Menu



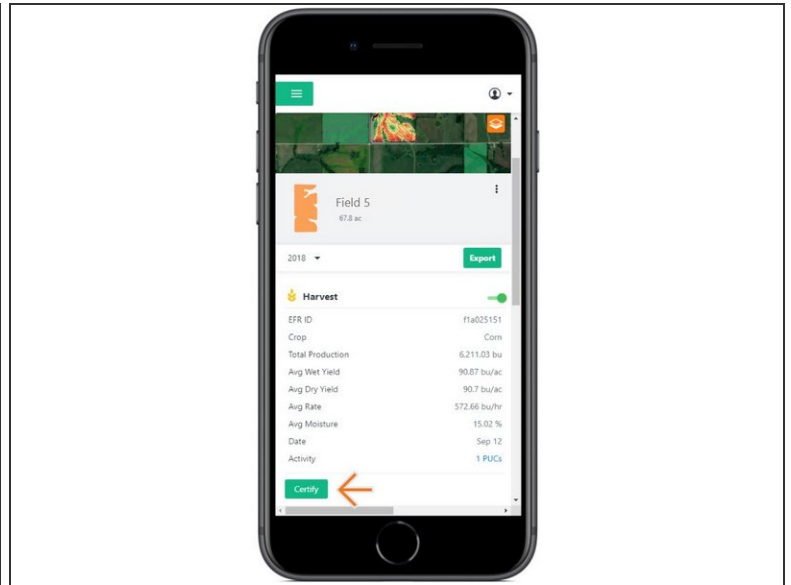
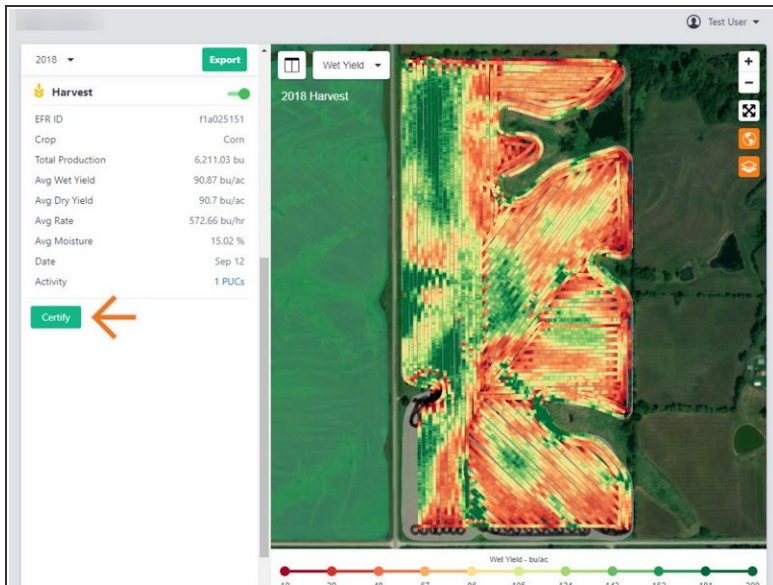
- Selecting Fields from the Farmobile DataEngine menu will open the Fields page with all of your Farms and Fields listed and displayed on the map.

Step 2 — Select a Field



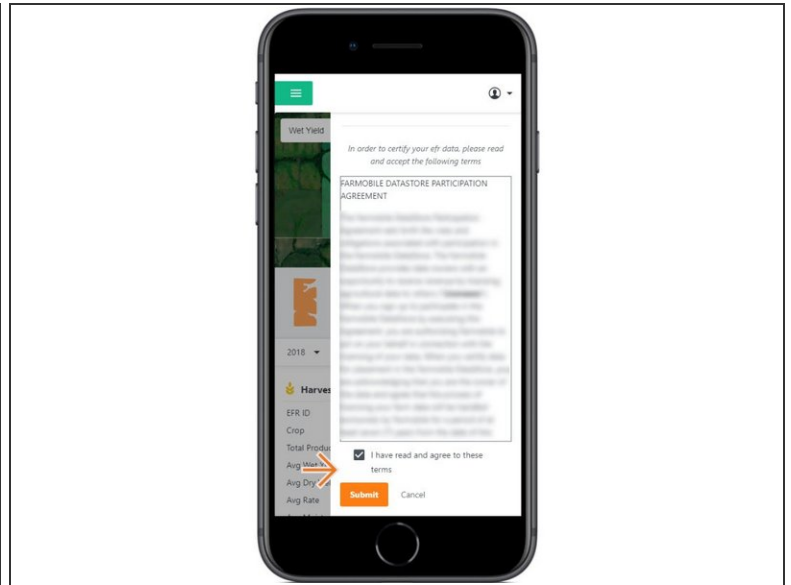
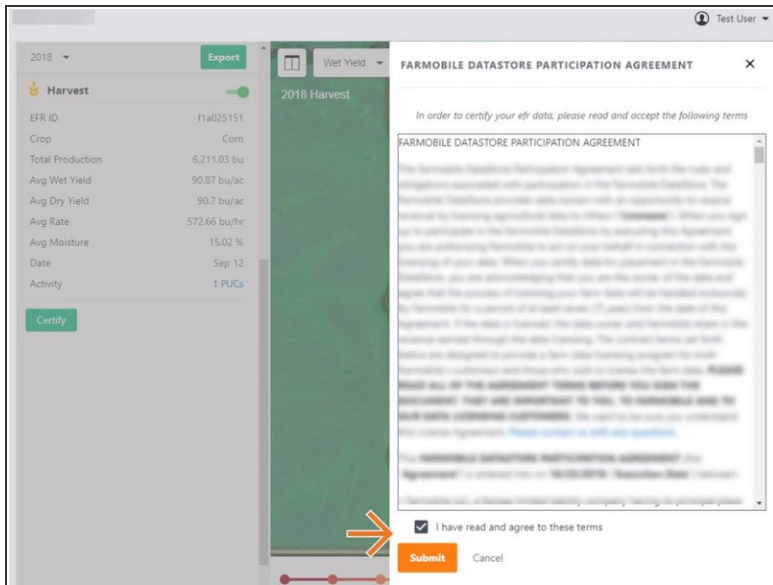
- Select a Field with agronomic activity from the field list.
- This will open the field details page and display available EFR records.

Step 3 — Select Certify



- For a listed EFR, select the 'Certify' button.
- This will open the Farmobile DataStore Participation Agreement for review.

Step 4 — Review and Accept the Agreement



- Review the Farmobile DataStore Participation Agreement.
- Check the box: "I have read and agree to these terms"
 - This will activate the Submit button.
- Select the 'Submit' button to complete the agreement.
- EFR Certification is now available for all EFR records.
- A PDF version of the agreement is added to your Account > Agreements page allowing you to review and download the agreement again at a later time.