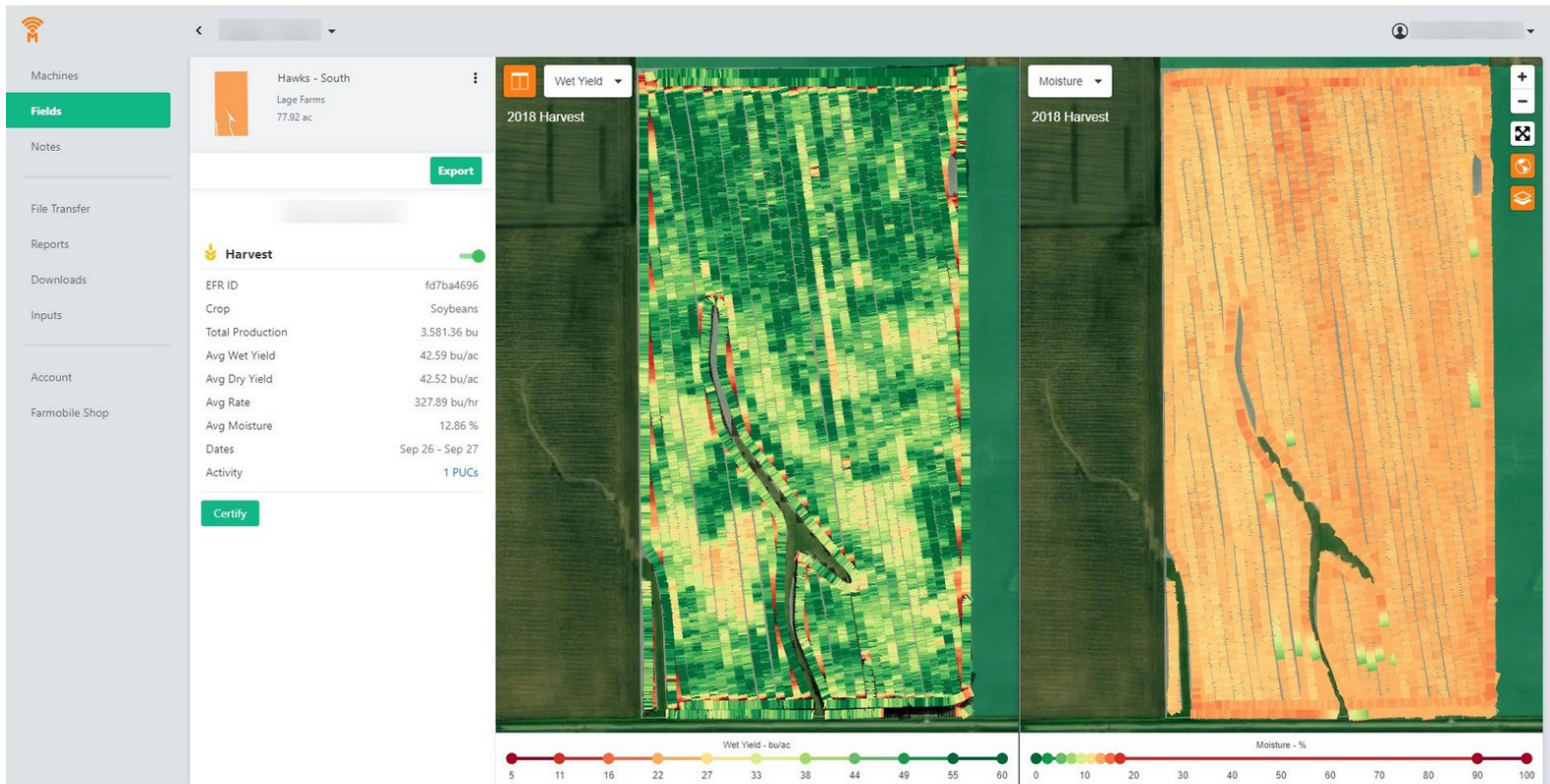




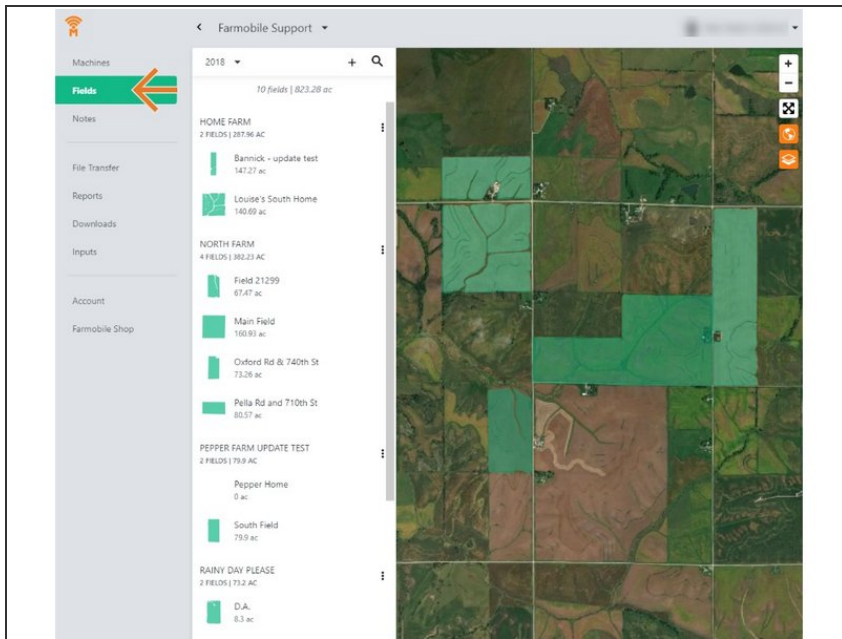
# Split Map View

This guide will walk you through the required steps to view your EFR heatmaps in split map view.

Written By: Support

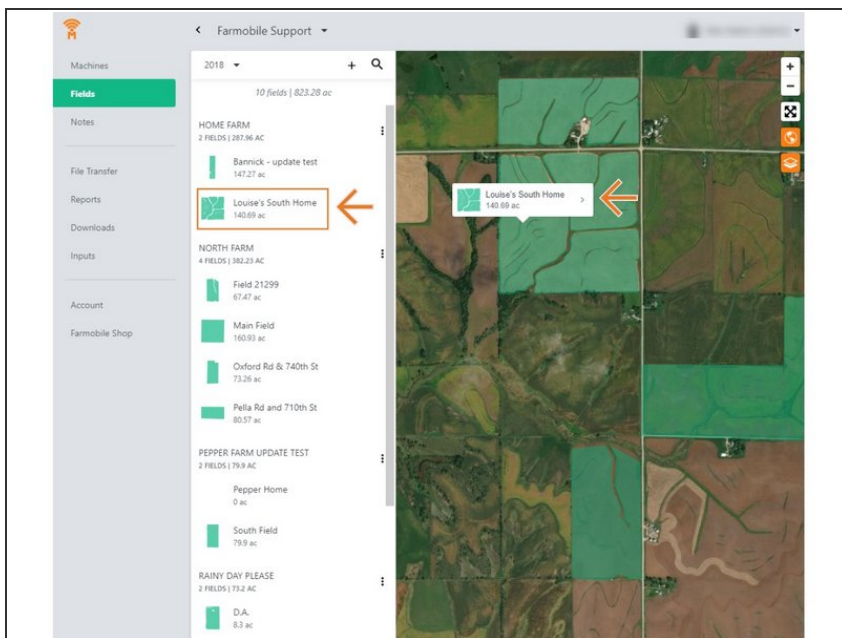


## Step 1 — Select Fields from the Farmobile DataEngine<sup>SM</sup> Platform



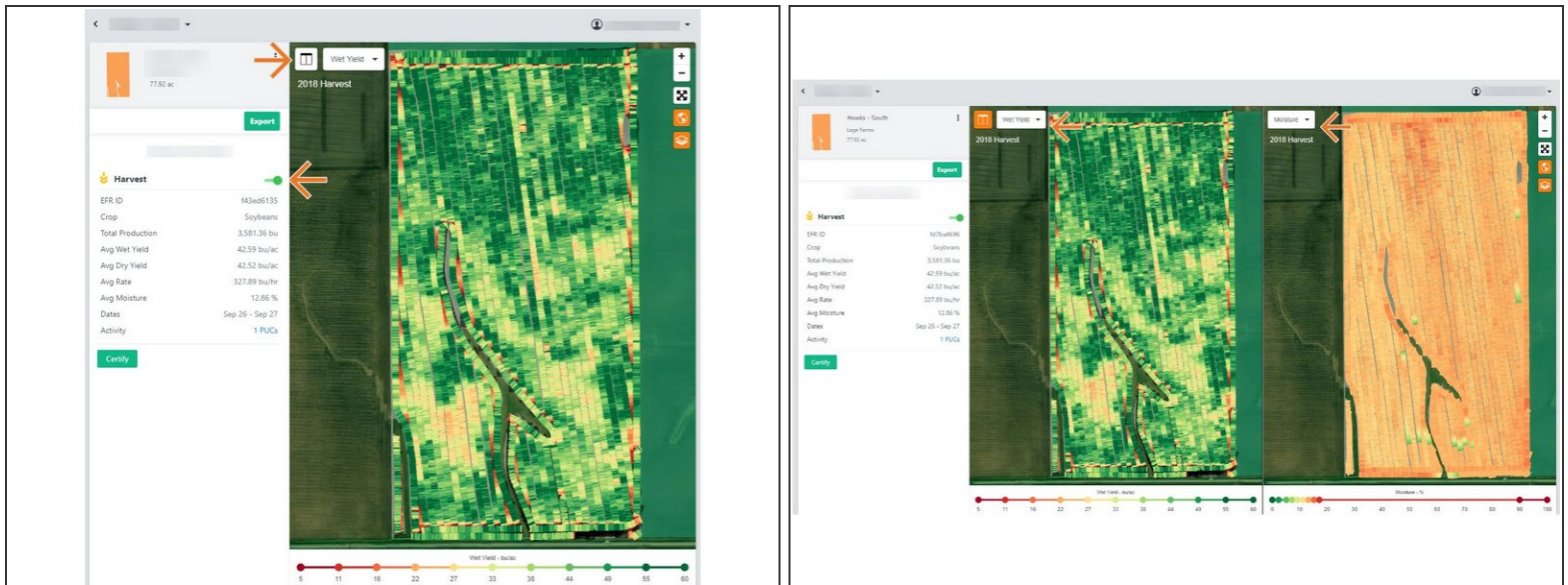
- Selecting Fields from the Farmobile DataEngine account will open the Fields page with all of your farms and fields listed and displayed on the map.

## Step 2 — Select a Field



- Select a field to open the field details page.
- Click on a field within your field list.
- Or, select a boundary on the map to open the pop-up. Then select the pop-up.
- The field details page will open with the most recent Electronic Field Record (EFR) heatmap loaded.

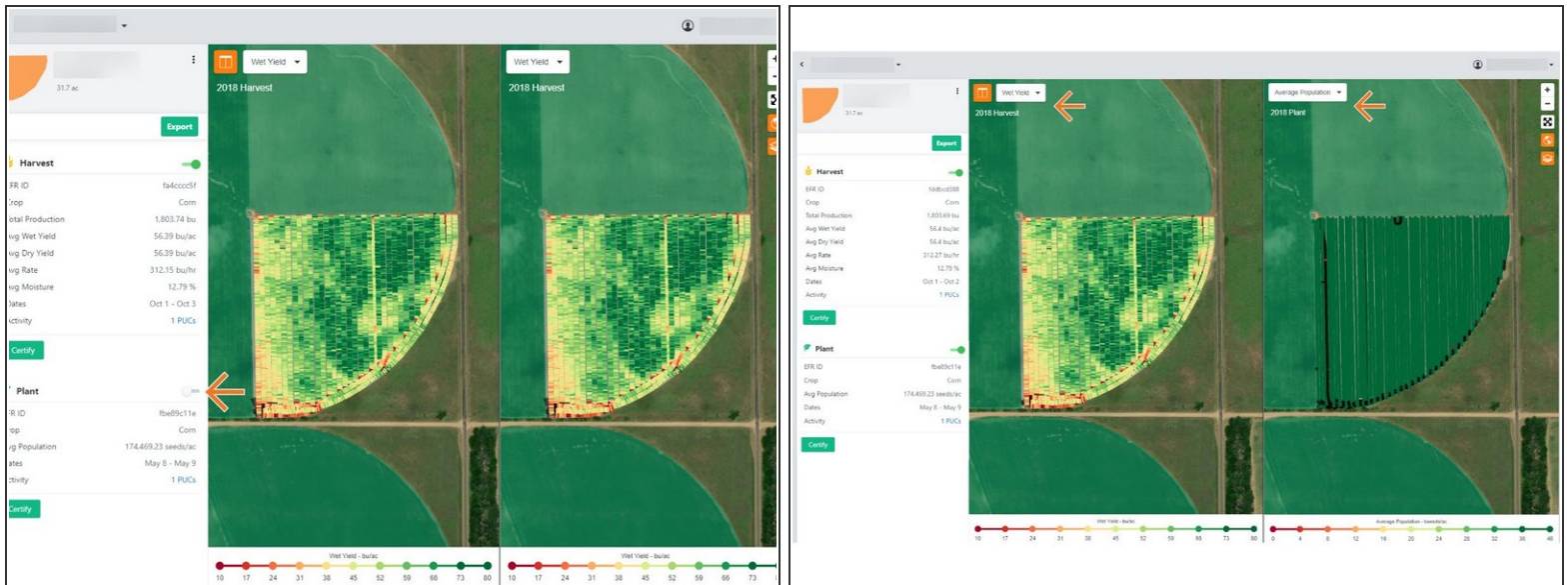
## Step 3 — Toggle-On & Split Heatmap



- Toggle on the EFR Heatmap to view on the map.
- The heatmap and map controls will be displayed on the map.
- Selecting the Split Map button located in the top left of the map will split your map views.
- The map will split with the same EFR activity selected by default. For each map, you can select a different attribute to view to compare.



## Step 4 — View Multiple EFR Activities



- While in Split View, toggle on another EFR for the selected field.
- This will open both activity heatmaps to view side by side.
- For each activity type, use the drop down menu to view a different attribute.