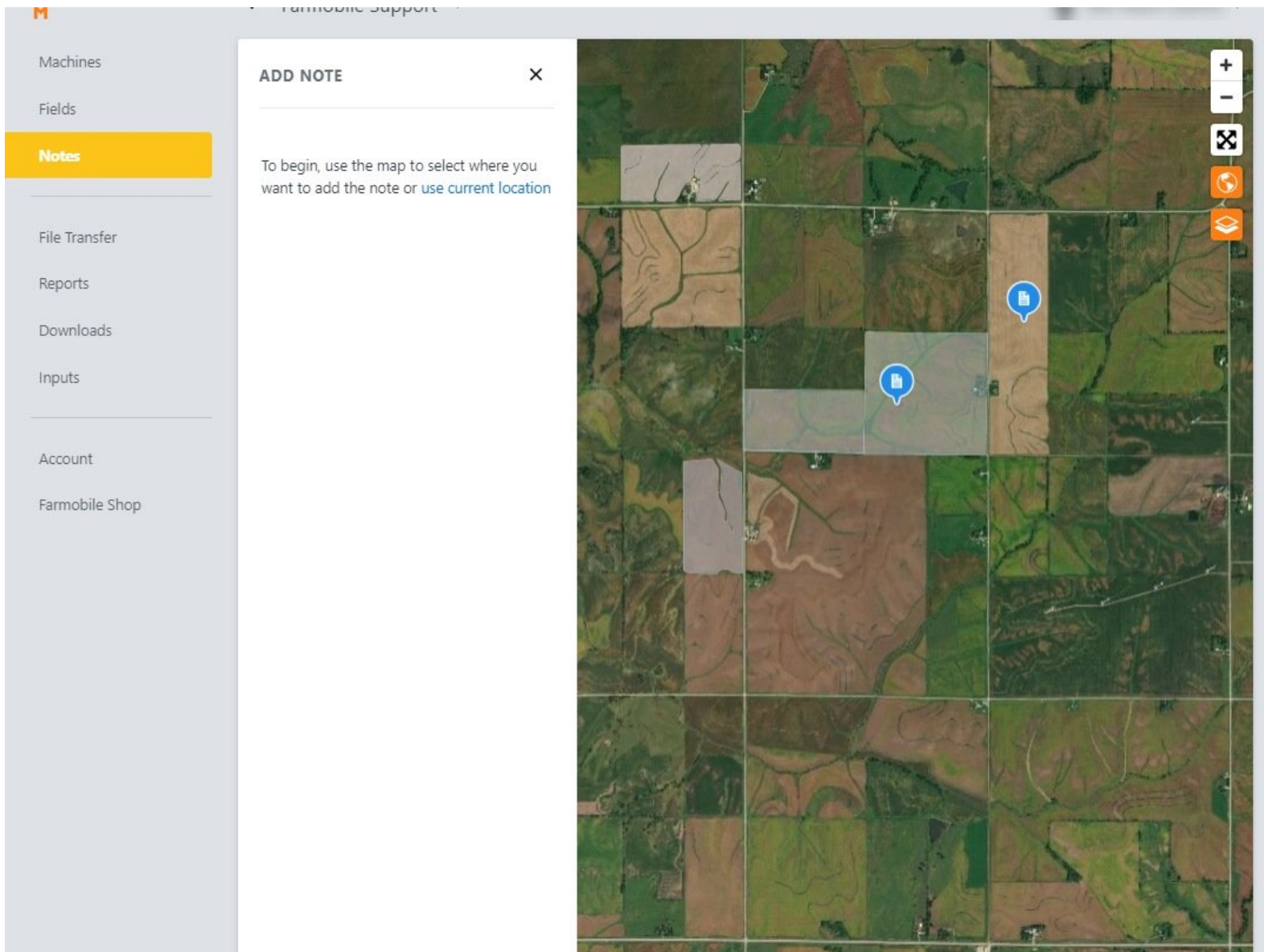




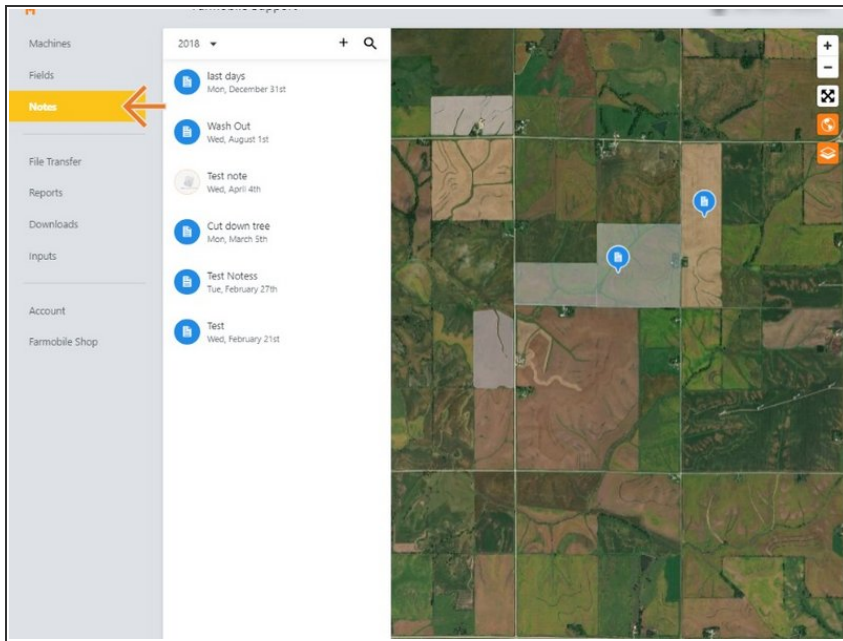
Add New Note

Add a new note in Farmobile® DataEngineSM to capture your field and machine notes.

Written By: Support

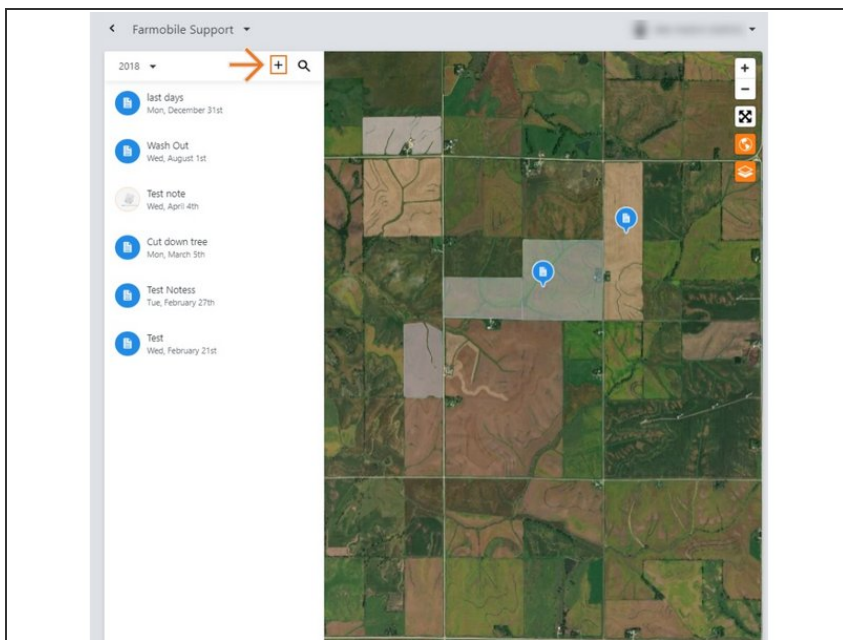


Step 1 — Select Notes from the Farmobile® DataEngineSM Menu



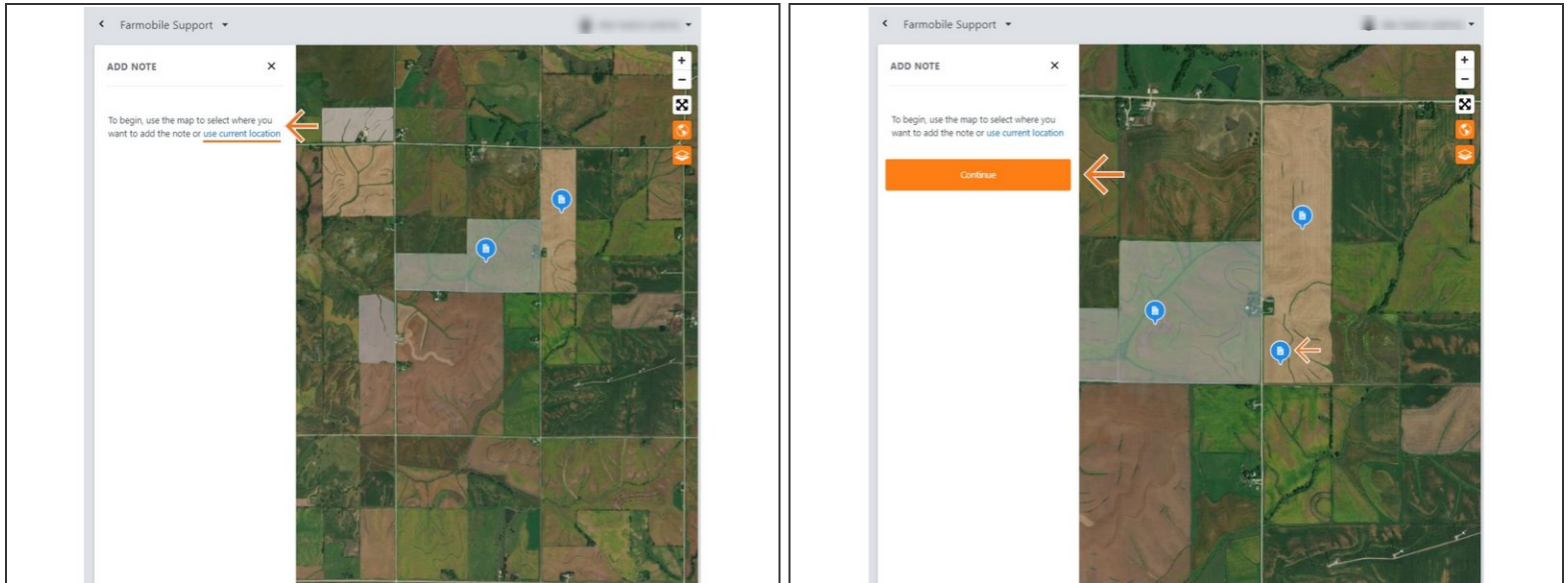
- Selecting Notes from the Farmobile® DataEngineSM menu will open the Notes page with all of your Notes listed and displayed on the map.

Step 2 — Select Add New Note



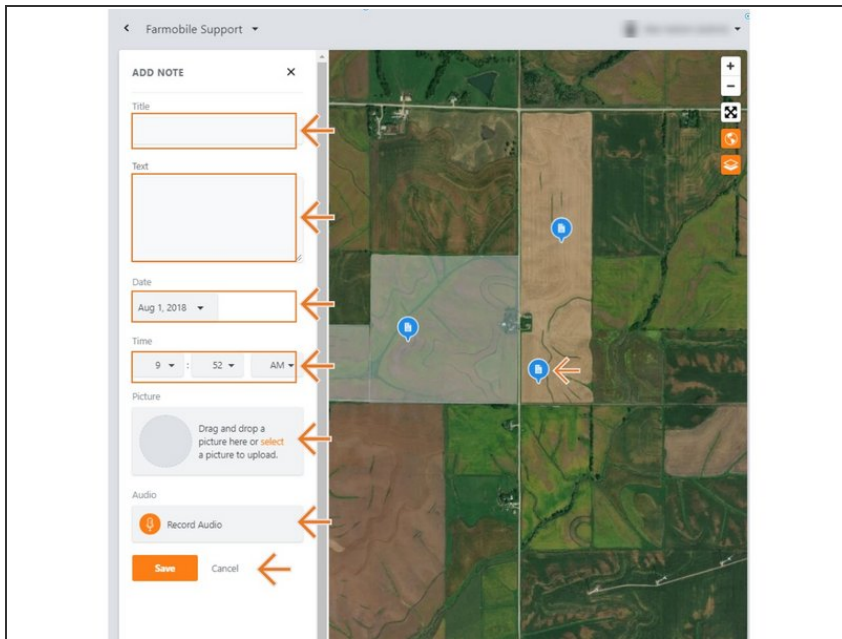
- Select the '+' button to open the 'Add New Note' window.
- This is only available in the current year.

Step 3 — Select Note Location



- Click on the map where the note needs to be.
- Select 'use current location' to use the current location of your device to make the note location.
- Field boundaries are displayed for reference and can be removed by toggling off the Layer Manager.
- Once your location is set, select 'Continue' to begin entering your note details.

Step 4 — Enter Note Details and Save



The screenshot shows the 'ADD NOTE' form in the Farmobile Support app. The form is overlaid on a satellite map. The form fields are: Title, Text, Date (Aug 1, 2018), Time (9:52 AM), Picture (with a drag-and-drop instruction), and Audio (with a 'Record Audio' button). At the bottom are 'Save' and 'Cancel' buttons. Orange arrows point to each of these elements.

- Populate the following items:
 - Title: Title of the note.
 - Text: Description/details of the note.
 - Date: Defaults to current date, but you can update the date if needed.
 - Time: Defaults to current time, but you can update the time if needed.
 - Audio: Add an audio recording if needed.
- Select 'Save' to save your new note.