



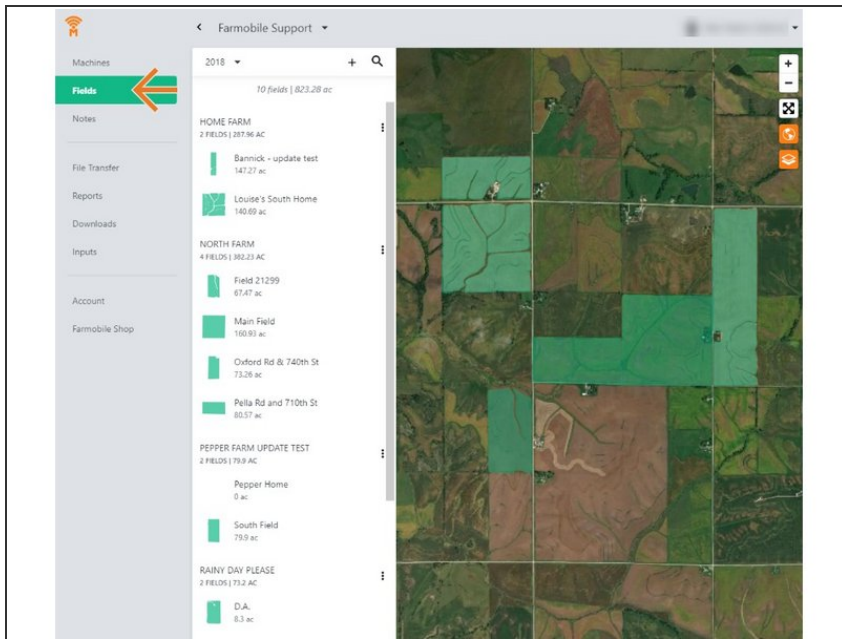
# Edit Field Boundary

Edit your field boundaries to keep them up to date each year.

Written By: Support

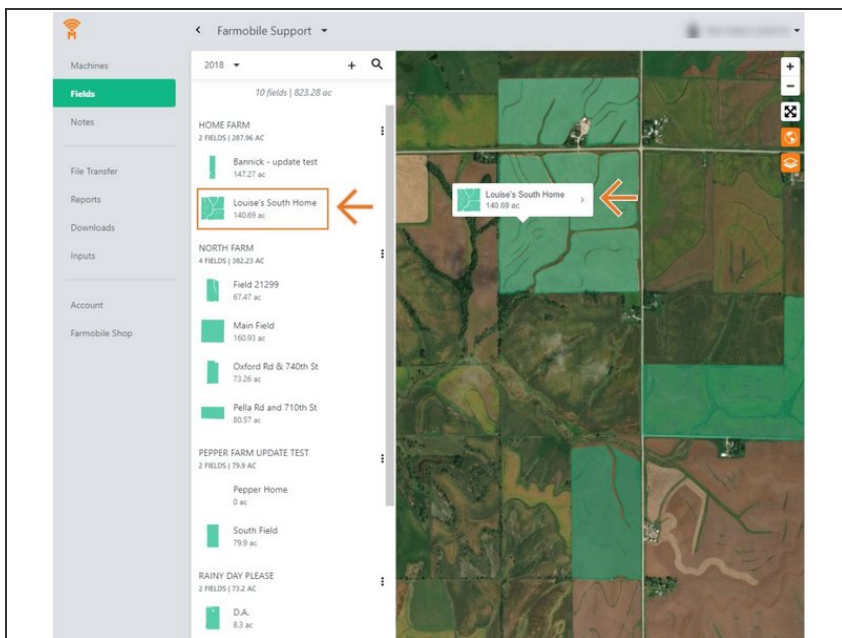
The screenshot shows the Farmobile web application interface. On the left is a grey sidebar with a menu: 'Machines', 'Fields' (highlighted in green), 'Notes', 'File Transfer', 'Reports', 'Downloads', 'Inputs', 'Account', and 'Farmobile Shop'. The main area is titled 'Weber 82' and contains a pop-up window 'EDIT WEBER 82'. This window shows 'Drawn Area: 64.97 ac' and instructions: 'Use the tools below to modify your field boundary, add additional shapes or cut a hole in an existing shape.' Below the instructions are several tools: 'Select' (with a selection icon), 'Draw Polygon' (with a polygon icon), 'Convert to Circle' (with a circle icon), 'Cut out' (with a scissors icon), 'Merge/Combine' (with a merge icon), and 'Remove' (with an 'X' icon). At the bottom of the pop-up are 'Save' and 'Cancel' buttons. The background of the main area is an aerial map showing a large field with its boundary marked by orange dots. A vertical toolbar on the right side of the map includes zoom in (+), zoom out (-), a crosshair, a rotation icon, and a layer icon.

## Step 1 — Select Fields from the Farmobile DataEngine<sup>SM</sup> Platform



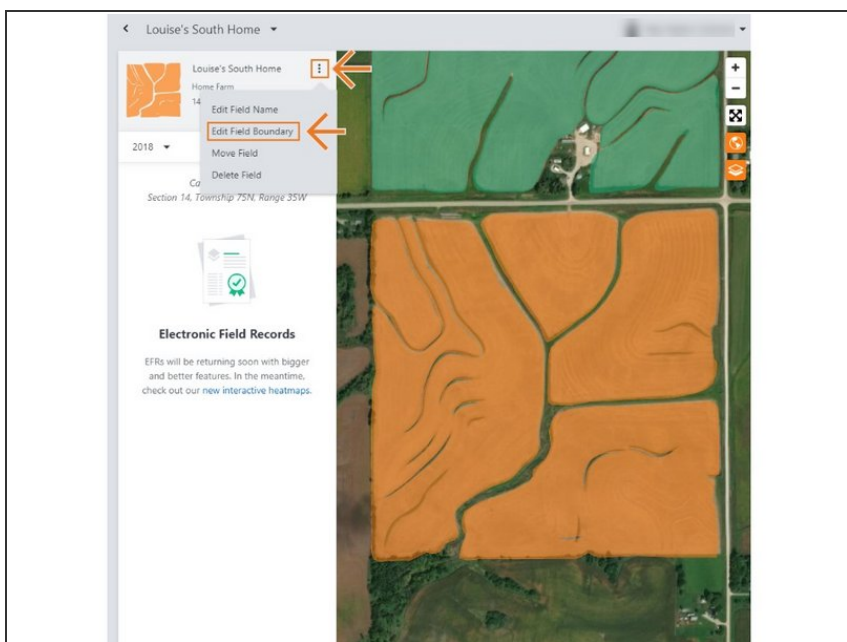
- Selecting Fields from the Farmobile DataEngine account will open the Fields page with all of your farms and fields listed and displayed on the map.

## Step 2 — Select a Field



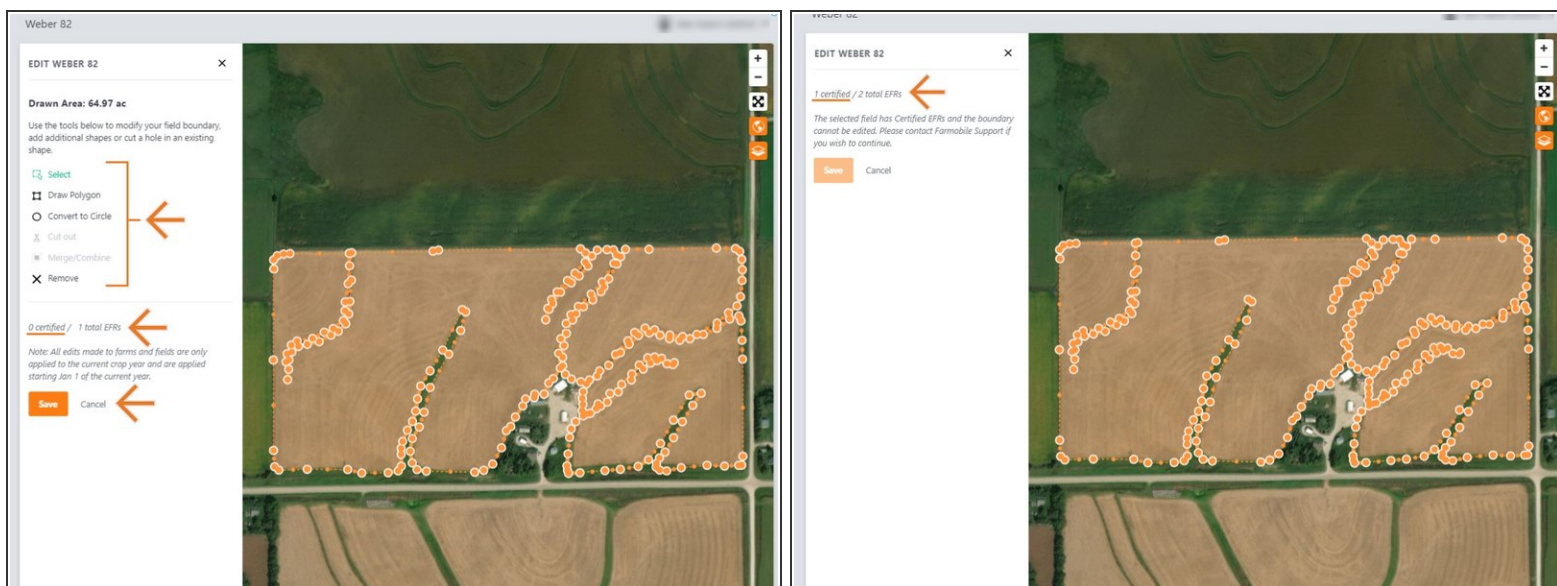
- Select a field to open the field details page.
- Click on a field within your field list.
- Or, select a boundary on the map to open the pop-up. Then select the pop-up.
- The field details page will open with the selected field highlighted orange.

## Step 3 — Select Edit Field Boundary



- Select the ellipse button next to the field name.
- In the menu, select 'Edit Field Boundary'.
- This will open the Edit Field Boundary window.

## Step 4 — Edit Boundary and Save



- Use the edit tools to edit the boundary.
- Boundaries are not allowed to overlap other boundaries.
- Draw an additional boundary and have multiple selected to enable the cut out and merge/combine tools enabled.
- Select 'Save' to save the new boundary.
- NOTE: If the field has a certified Electronic Field Record (EFR) you are not allowed to edit the boundary.
  - We prevent this edit to keep your certified data available for the Farmobile DataStore<sup>SM</sup> exchange.
  - Select 'Cancel' to close the window.
  - Contact Farmobile Support if you wish to edit the boundary.