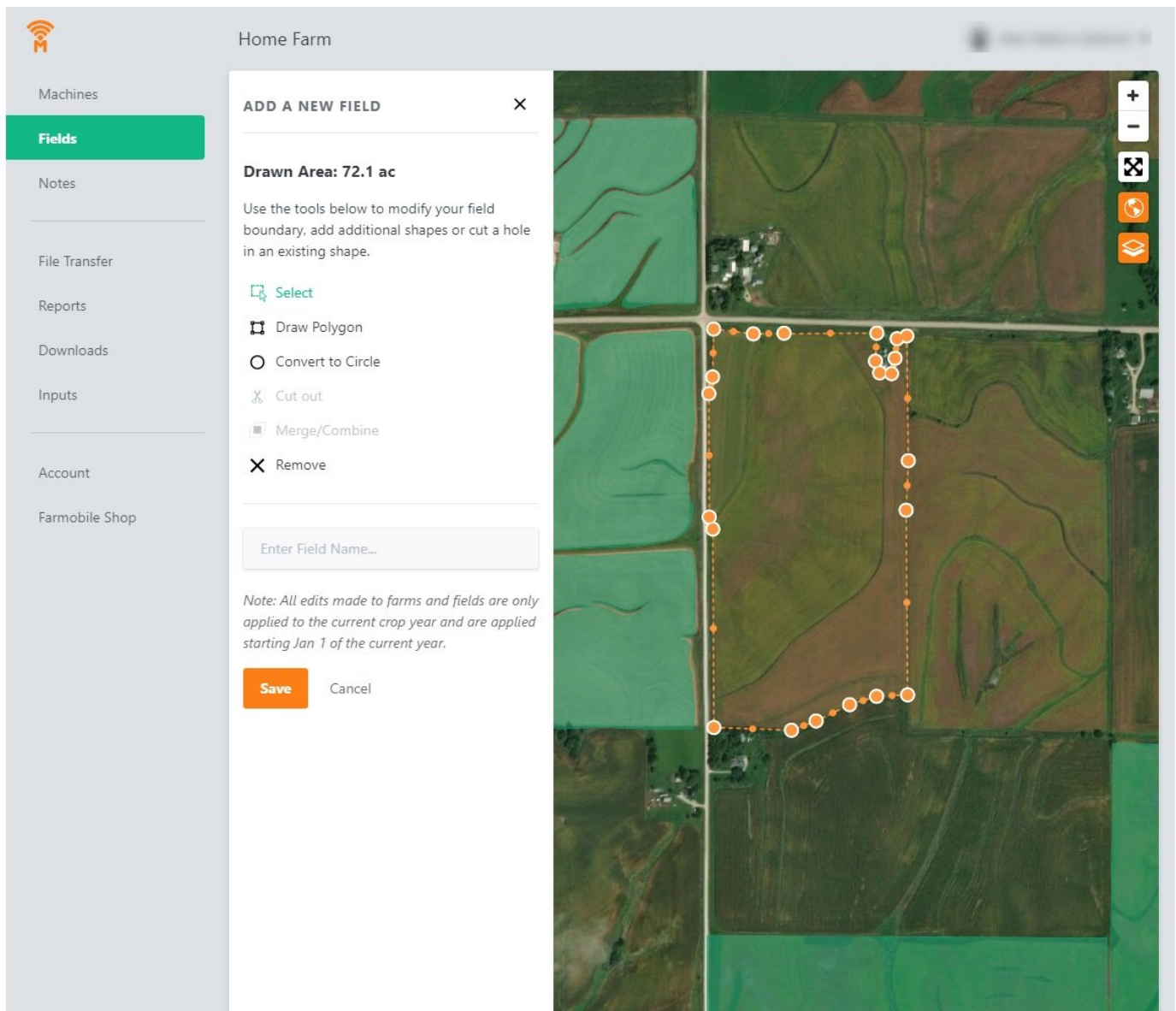




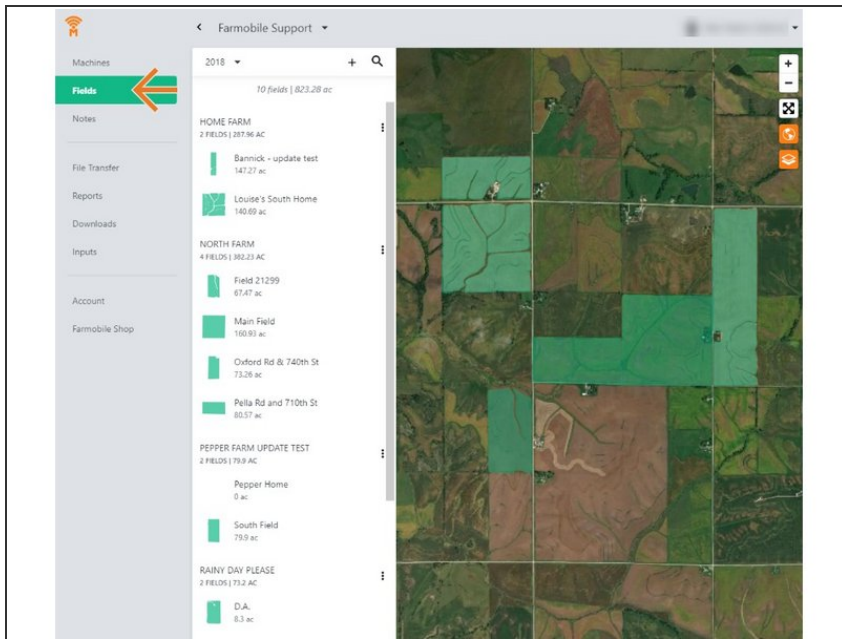
# Add New Field

Add a new field to keep your records up to date.

Written By: Support

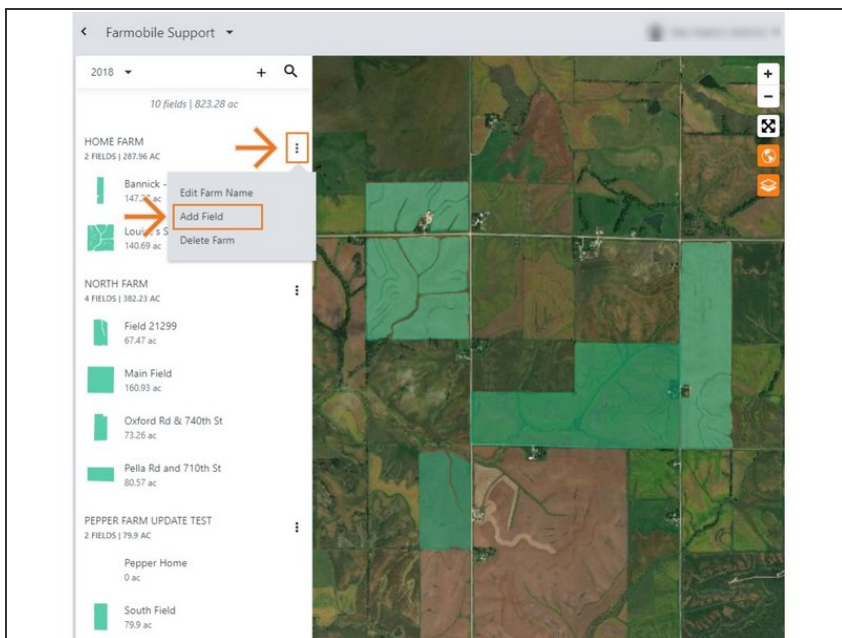


## Step 1 — Select Fields from the Farmobile DataEngine<sup>SM</sup> Platform



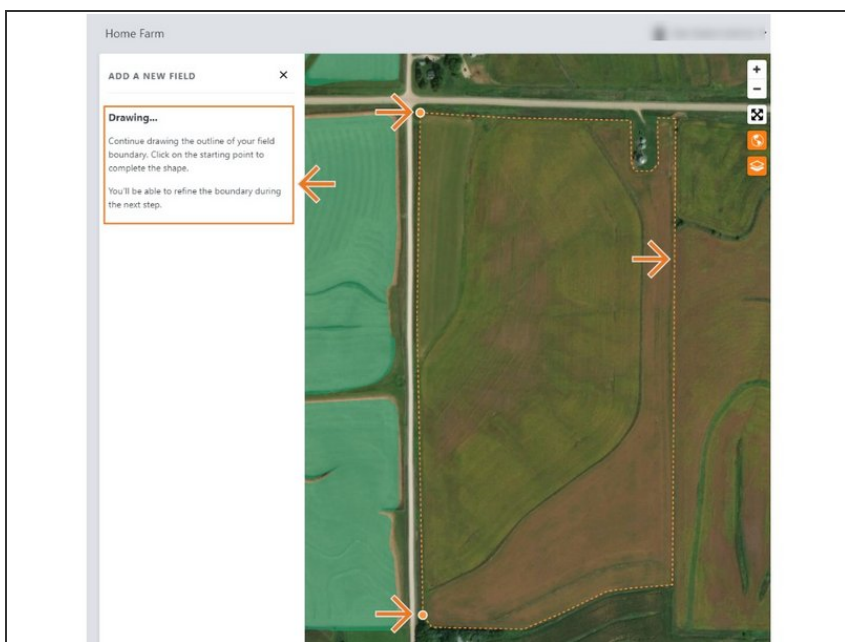
- Selecting Fields from the Farmobile DataEngine account will open the Fields page with all of your farms and fields listed and displayed on the map.

## Step 2 — Select Add Field



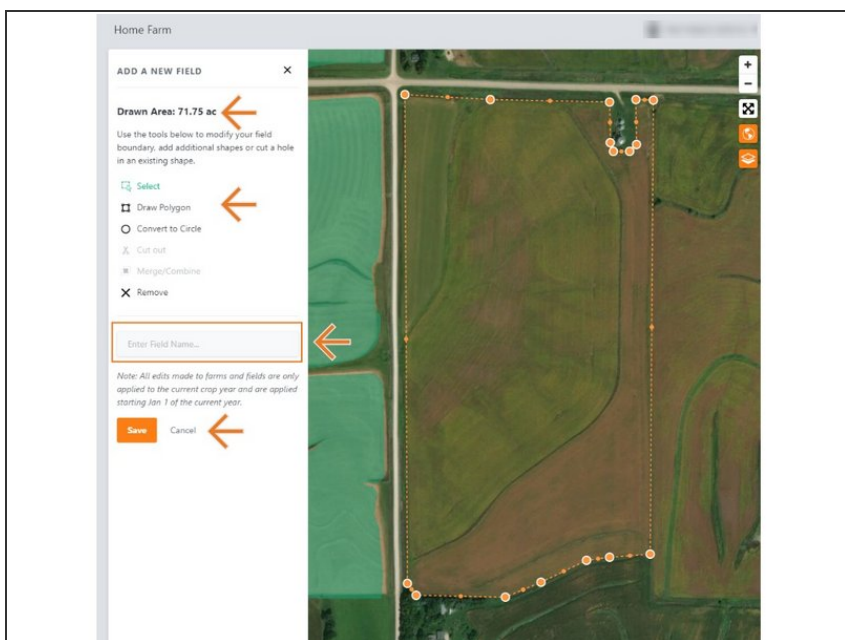
- For an existing farm, select the ellipse button.
- In the menu, select 'Add Field'.
- This will open the add new field window so you can begin drawing your boundary.

## Step 3 — Draw the Field Boundary



- Navigate on the map to the new field location.
- Click on the map your starting point to begin drawing the boundary.
- Click on the starting point or double click the mouse to complete the boundary.
- Once the boundary is drawn, the window will update to name and save the field.

## Step 4 — Enter Field Name and Save



- Use the edit tools to edit the boundary if needed.
- The new boundary is not allowed to overlap any other boundaries.
- Draw an additional boundary and have multiple selected to enable the cut out and merge/combine tools enabled.
- Enter a field name in the text box.
- Select 'Save' to save the new field.