



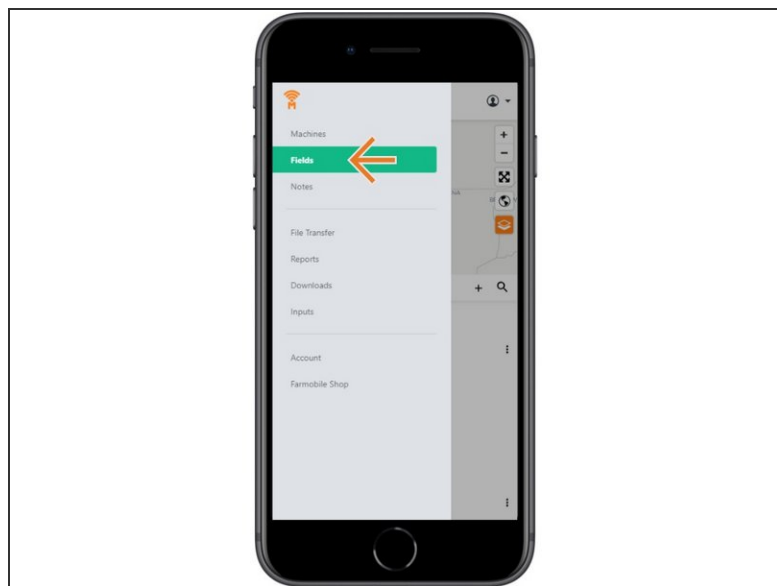
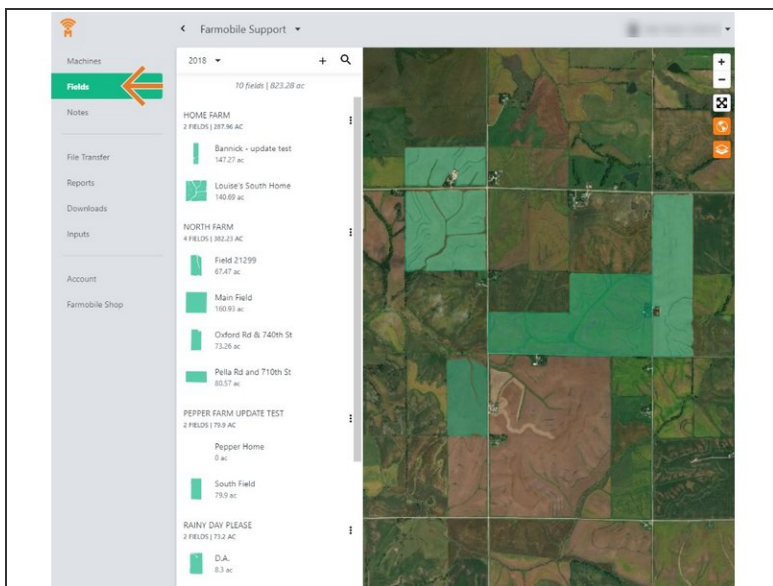
Delete Farm

Delete a Farm to remove old records.

Written By: Support

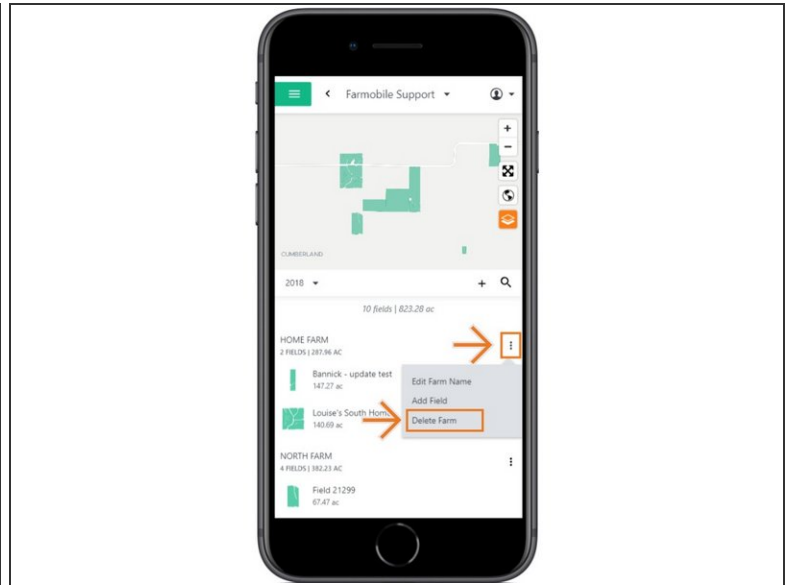
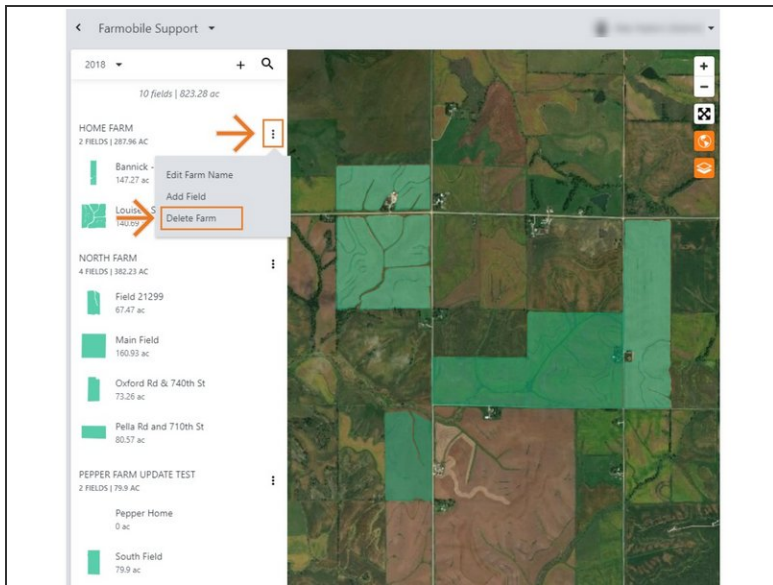
A screenshot of the Farmobile web application interface. On the left is a sidebar menu with options: Machines, Fields (highlighted in green), Notes, File Transfer, Reports, Downloads, Inputs, Account, and Farmobile Shop. The main header shows "Home Farm" and a user profile for "Alex Hadorn (Admin)". A modal dialog titled "DELETE HOME FARM" is open, asking "Are you certain you would like to delete this farm?". It lists two farms: "Bannick - update test" (147.27 ac, 0 Certified / 0 Total EFRs) and "Louise's South Home" (140.69 ac, 0 Certified / 0 Total EFRs). Each farm has "Move" and "Delete" radio button options. Below the list is a "Select a Farm" dropdown menu. At the bottom of the dialog is a note: "Note: All edits made to farms and fields are only applied to the current crop year and are applied starting Jan 1 of the current year." and two buttons: "Apply" (orange) and "Cancel". The background of the application shows a satellite map of a farm with several green-shaded field areas.

Step 1 — Select Fields from the Farmobile DataEngineSM Platform



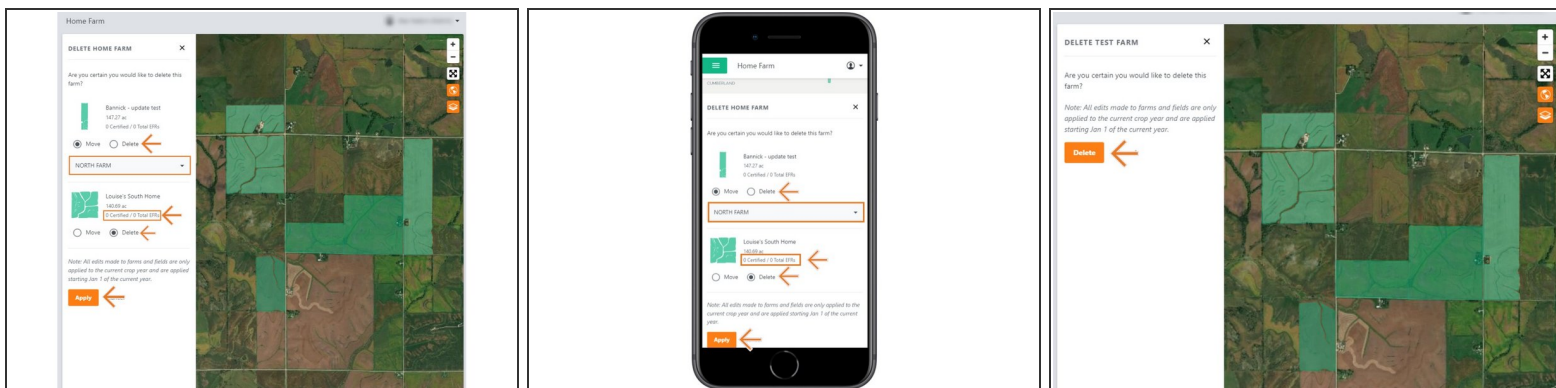
- Selecting Fields from the Farmobile DataEngine account will open the Fields page with all of your farms and fields listed and displayed on the map.

Step 2 — Select Delete Farm



- For an existing farm, select the ellipse button.
- In the menu, select 'Delete Farm'.
- Delete farm is only available in the current year.
- This will open the delete farm window.

Step 3 — Delete Farm



- All associated fields must be moved to another farm or deleted to delete a farm.
- Fields that have a certified Electronic Field Record (EFR) cannot be deleted, and must be moved.
- To move a field, select another farm in the drop down.
- Once you choose to move or delete associated fields, you can select 'Apply' to save your edits and delete the farm.
- Note: If there are not any associated fields, you can simply delete the farm.