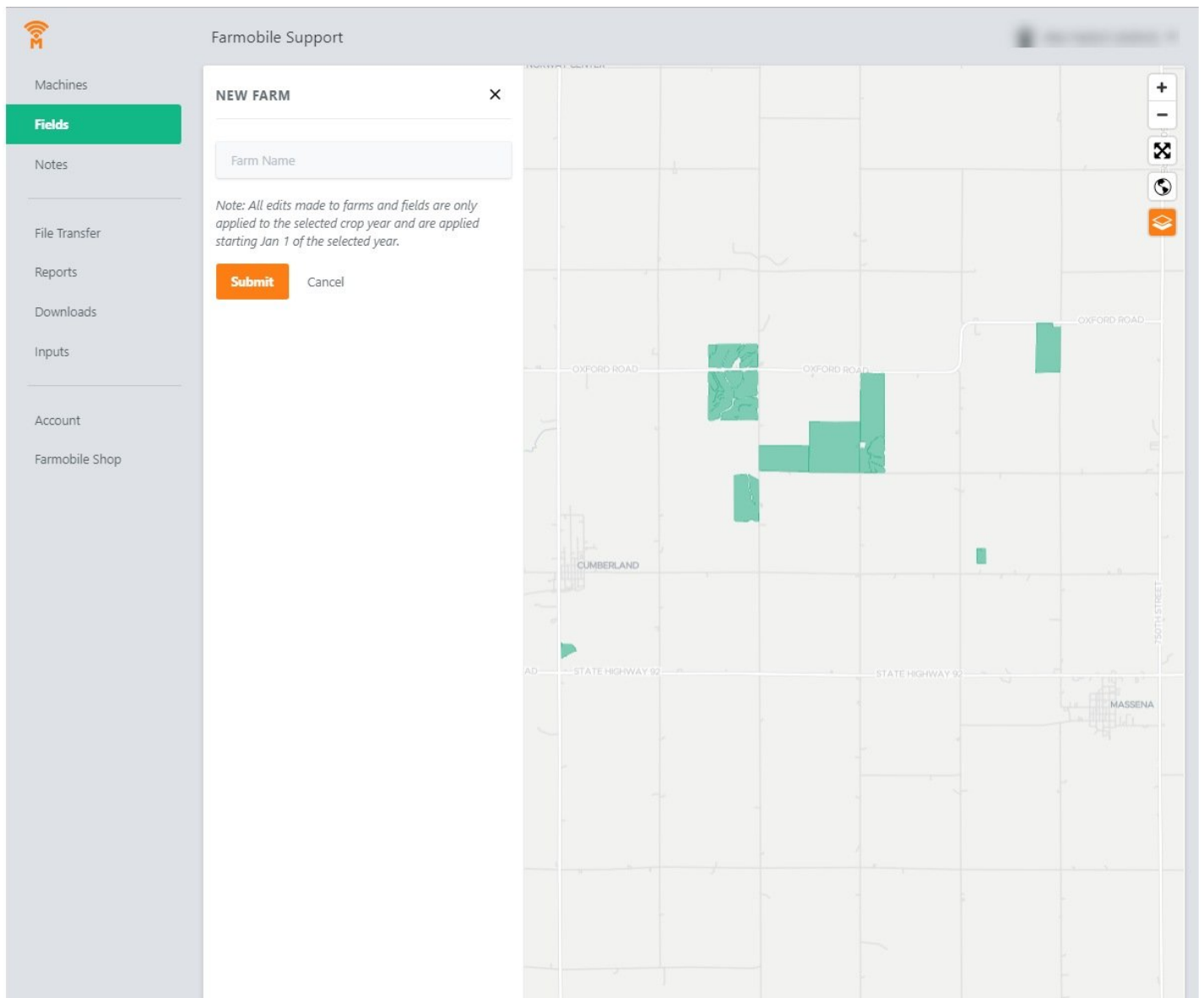




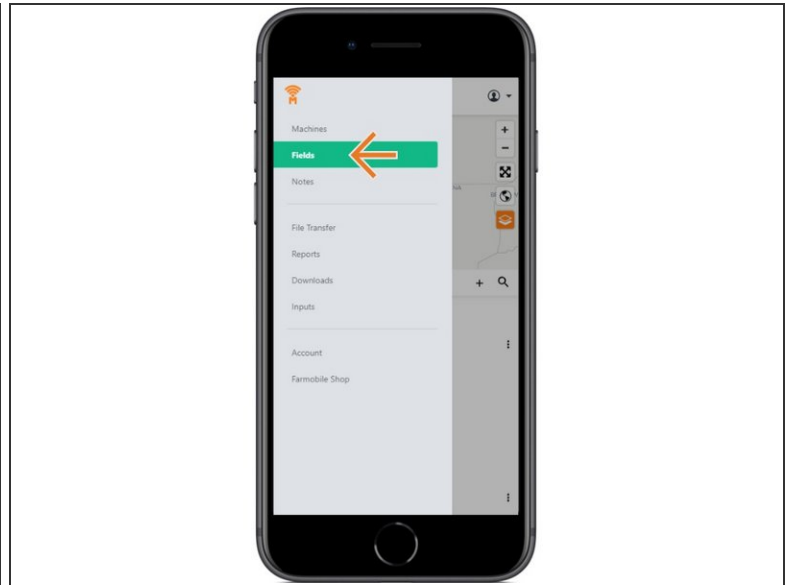
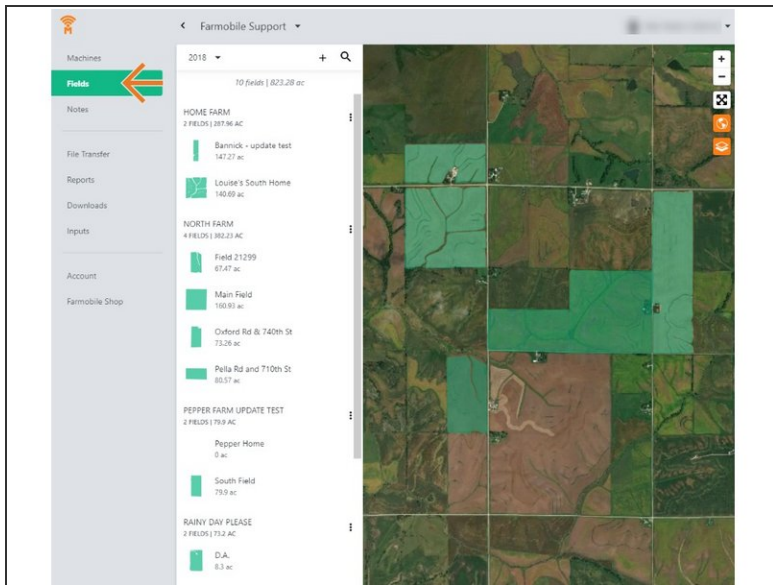
# Add New Farm

Create a New Farm to organize and manage your fields.

Written By: Support

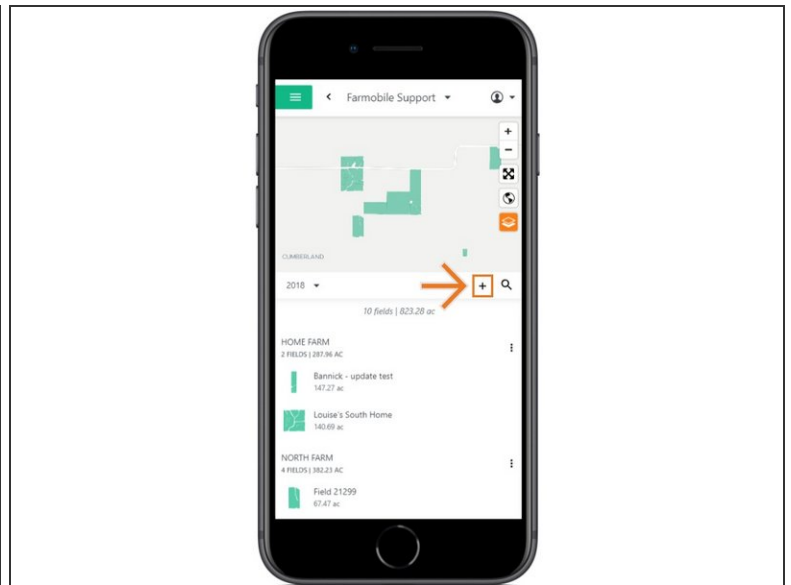
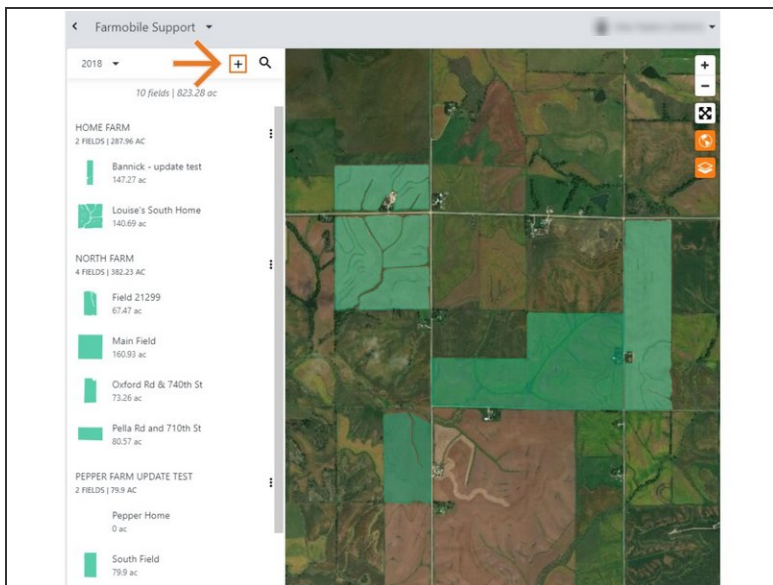


## Step 1 — Select Fields from the Farmobile DataEngine<sup>SM</sup> Menu



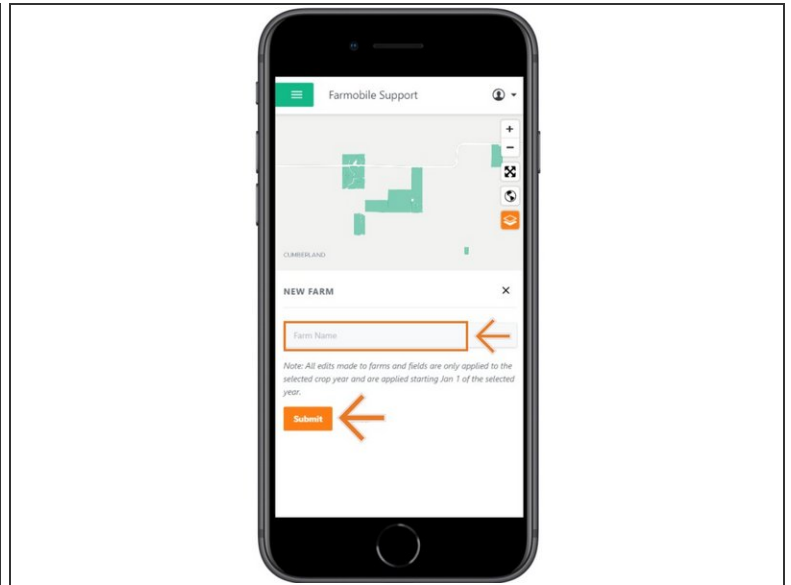
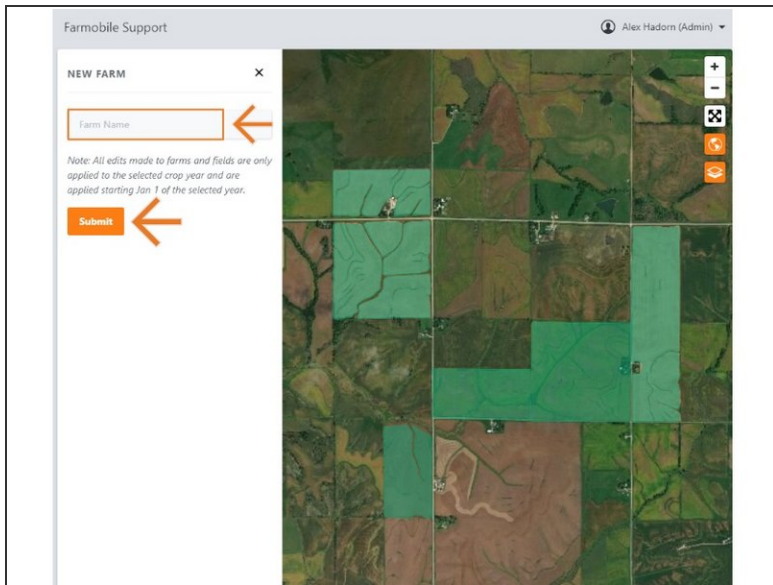
- Selecting Fields from the Farmobile DataEngine menu will open the Fields page with all of your Farms and Fields listed and displayed on the map.

## Step 2 — Select Add New Farm



- Select the '+' icon to open the 'Add New Farm' window.

## Step 3 — Enter the Farm Name and Submit



- Type the New Farm Name in the text box.
- Once your Farm is created, you can then add new fields to the farm.
- Select 'Submit' to add your new farm!