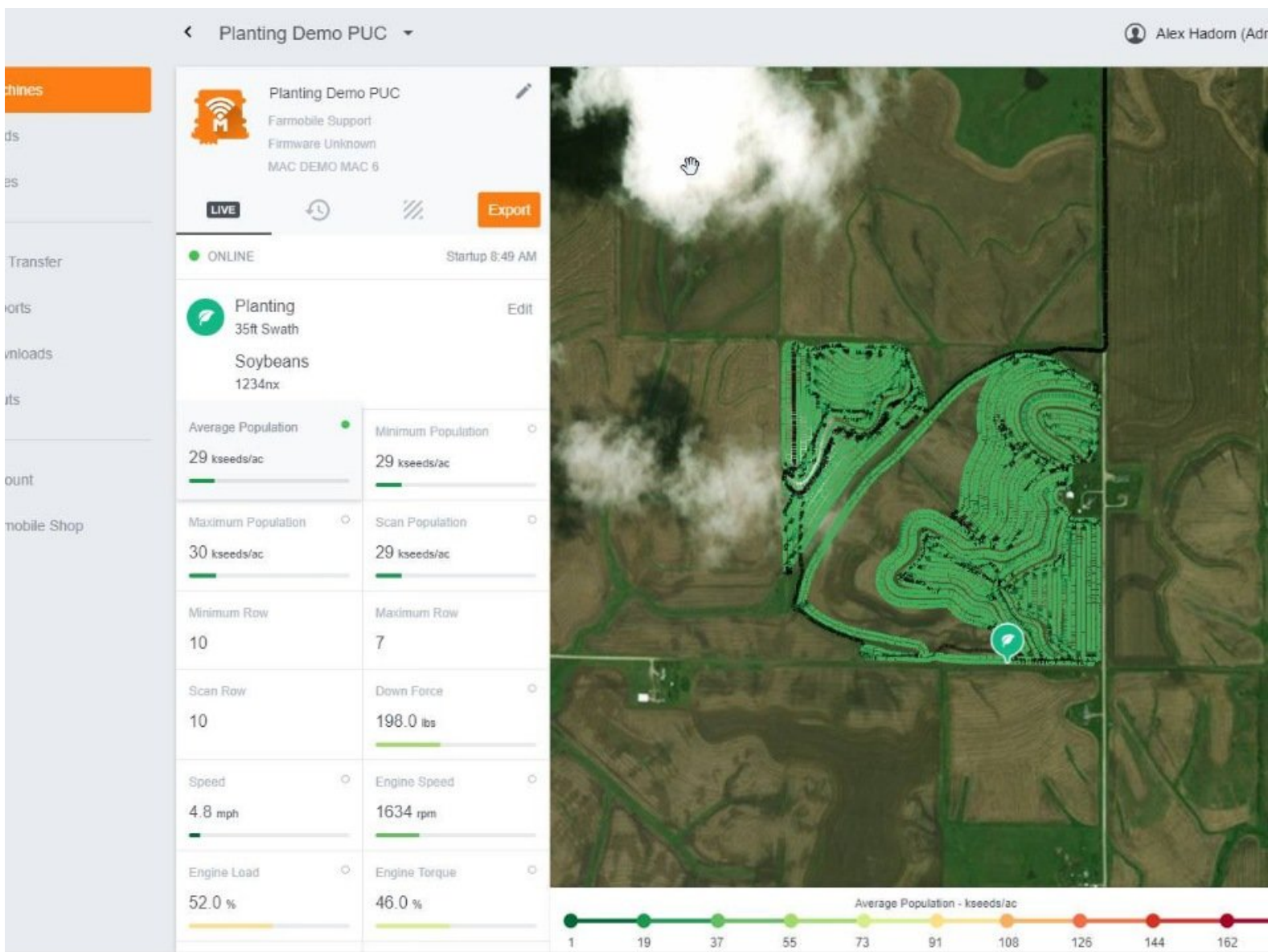




Live - Interactive Heatmaps (Machine Level)

View your real-time data and control what you see on the map with the Live interactive heatmaps.

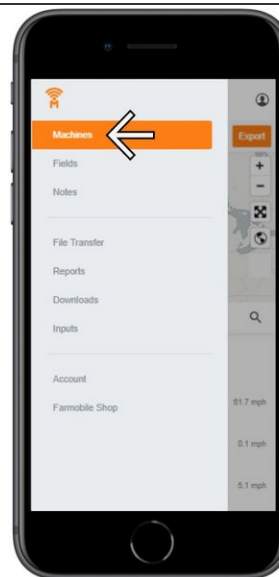
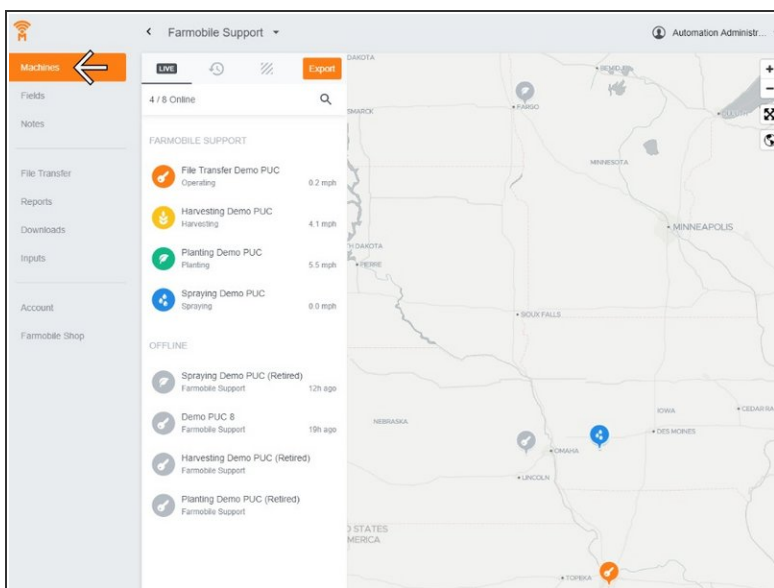
Written By: Support



INTRODUCTION

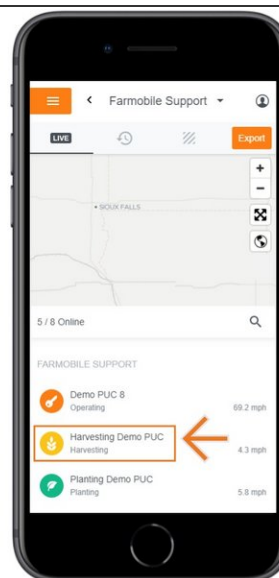
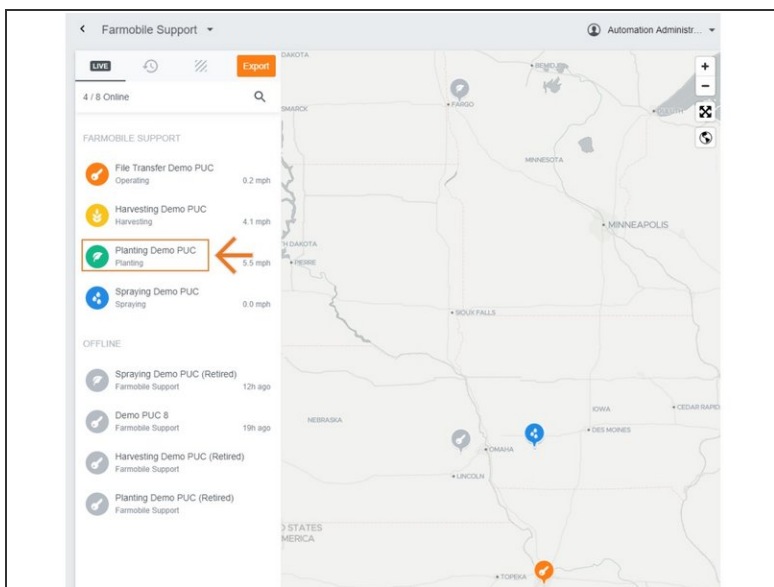
- At the Machine level, both agronomic and machine attribute cards are listed based on your current activity.
- The list of attribute cards are sorted by activity with agronomic information sorted first (when present) and then followed by machine attribute cards.
- The card being mapped is marked by a green icon.
- You can select a different attribute card at any time to view it on the map in real time.

Step 1 — Select Machines from the Farmobile DataEngineSM Platform



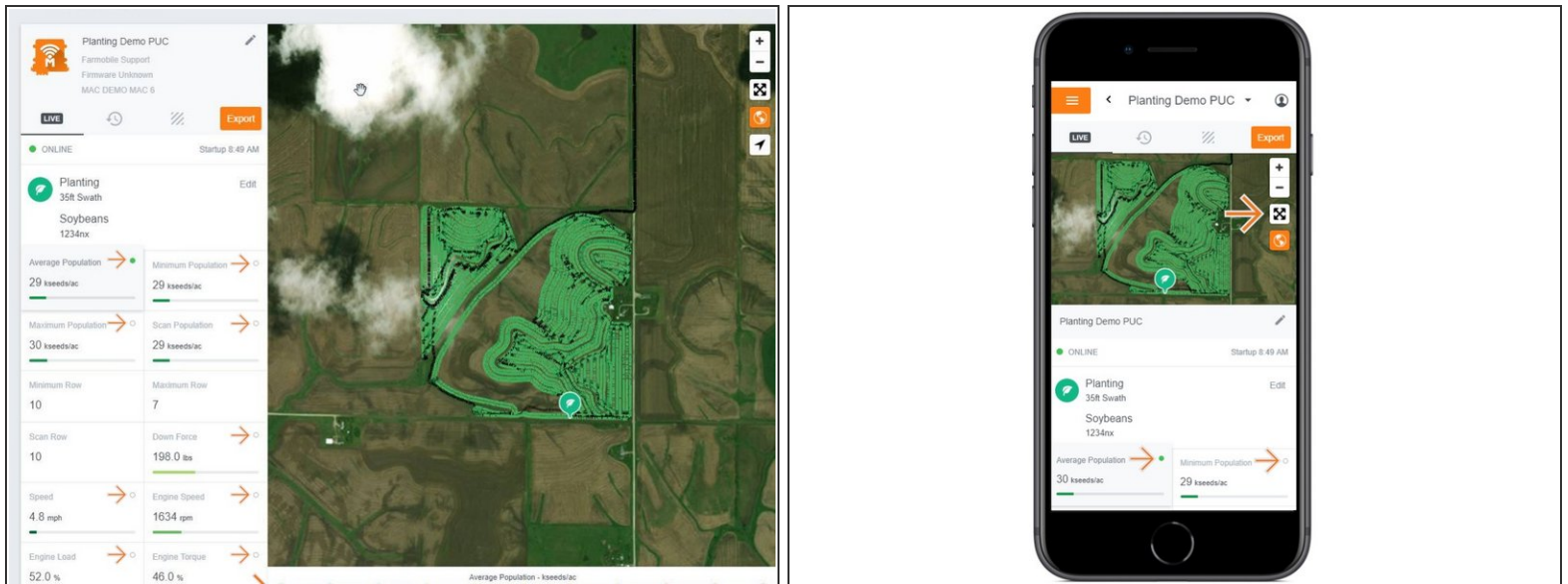
- Selecting Machines from the Farmobile DataEngine platform will open the Machines page with all of your Farmobile PUCTM device listed and displayed on the map.

Step 2 — Select a Machine



- Select an online machine to view the live interactive maps for that machine.

Step 3 — Review and Map Your Information



- The list of available attribute cards are based on activity.
- When available, agronomic attribute cards are sorted above the machine attribute cards.
- All attribute cards containing a circle icon (top right of cards) can be mapped on the map in real-time.
- The green icon indicates which attribute card is being mapped.
- You can view one attribute card on the map at a time.
- The map legend for each selected attribute card is located beneath the map.
- **Mobile:** For mobile you can select the full extent button (located directly under zoom in / zoom out buttons) to view the map and legend in full extent.