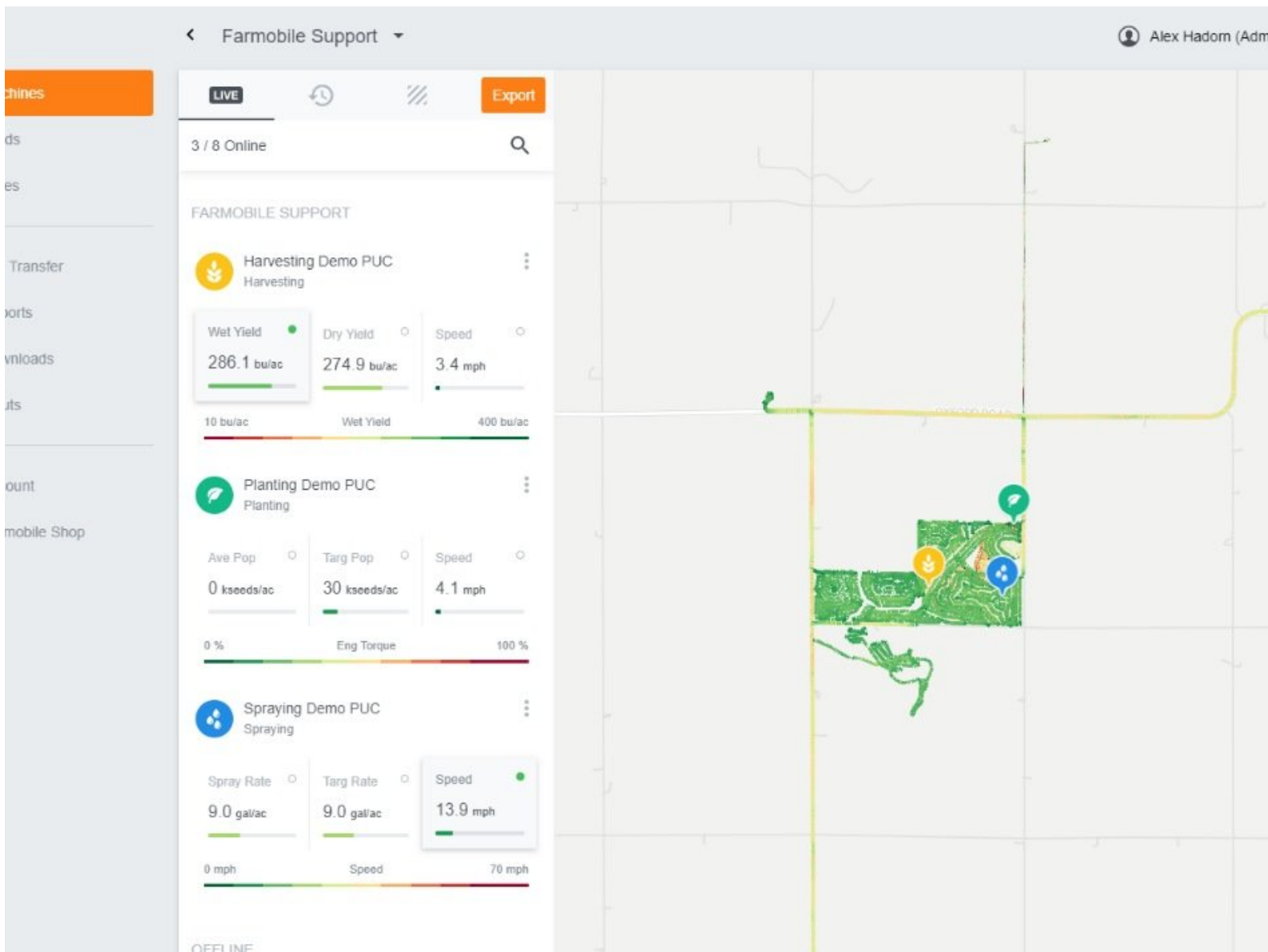




Live - Multiple Machines

View multiple machines live, and display interactive heatmaps of your choice.

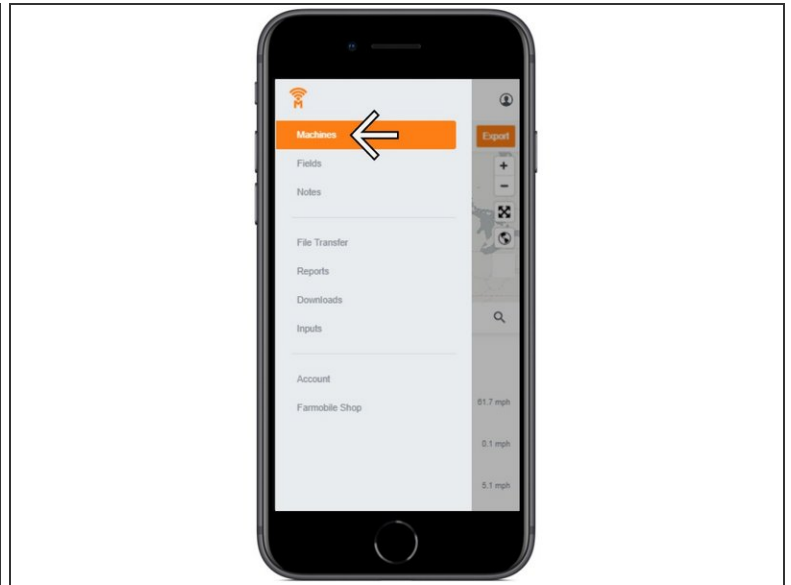
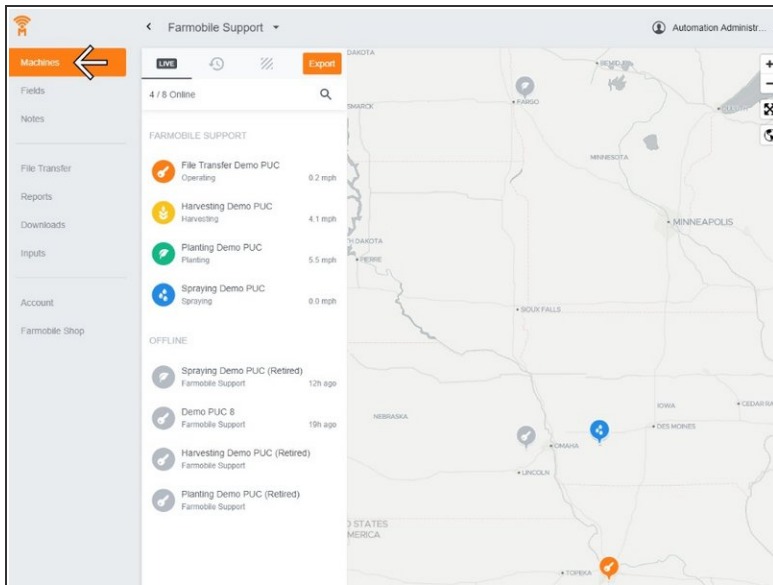
Written By: Support



INTRODUCTION

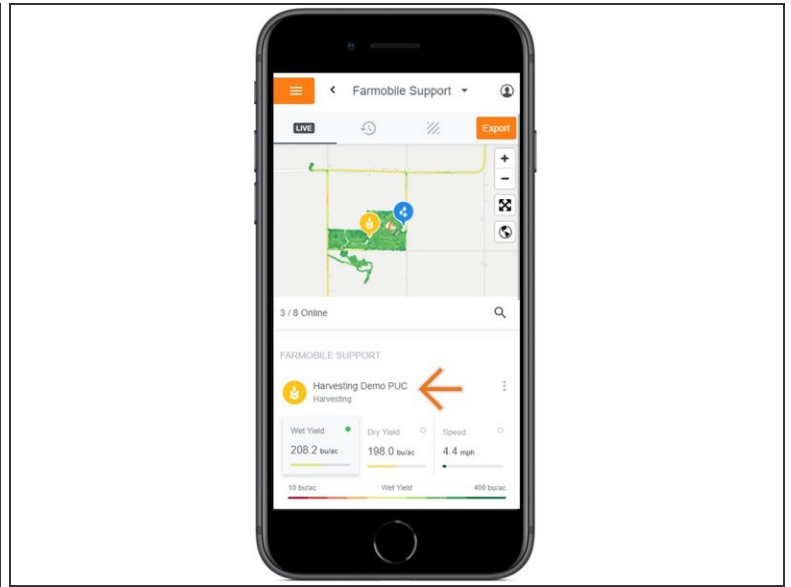
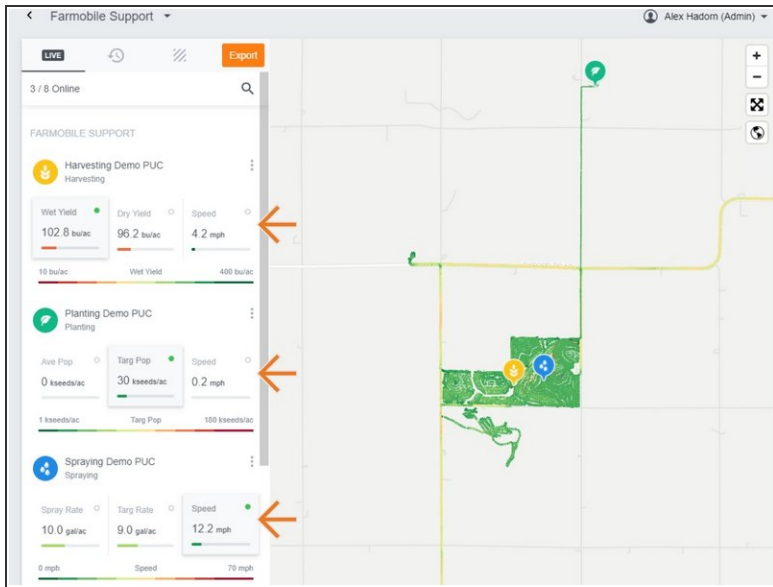
- While active, your live PUCs will display an interactive heatmap on the map.
- Once you zoom the map in close enough, the PUC menu will expand and display three attribute cards.
- The card being mapped is marked by a green icon.
- You can select a different attribute card at any time for any machine to view it on the map in real time.
- You control what three attribute cards are displayed, and the available menu quickly lets you toggle on different attributes to display.

Step 1 — Select Machines from the Farmobile DataEngineSM Menu



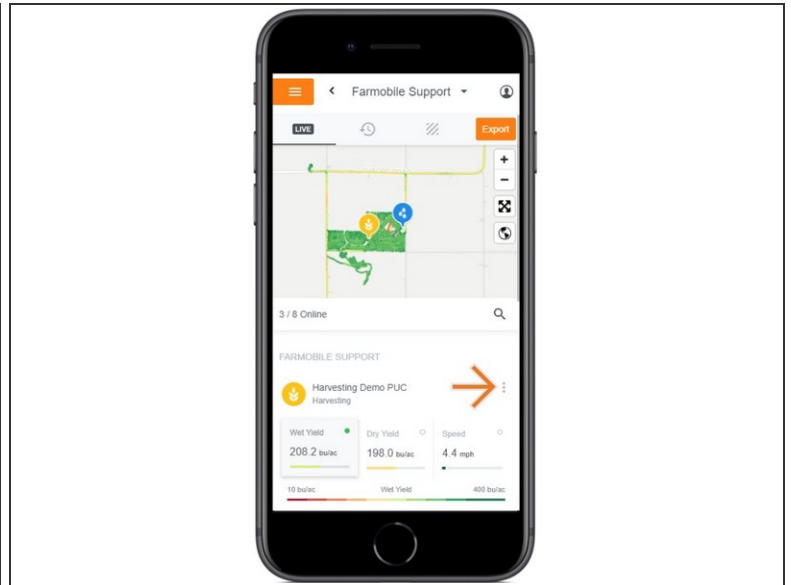
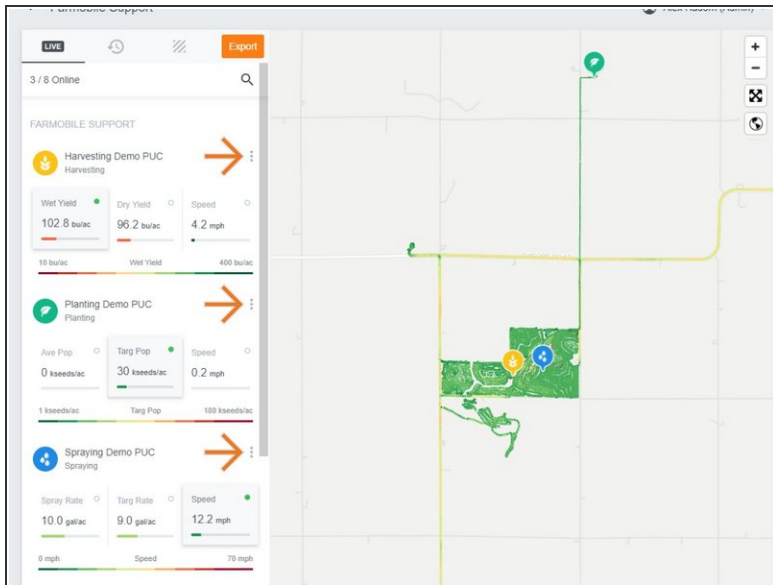
- Selecting Machines from the Farmobile DataEngine menu will open the Machines page with all of your PUCTM listed and displayed on the map.

Step 2 — Zoom in on the Map



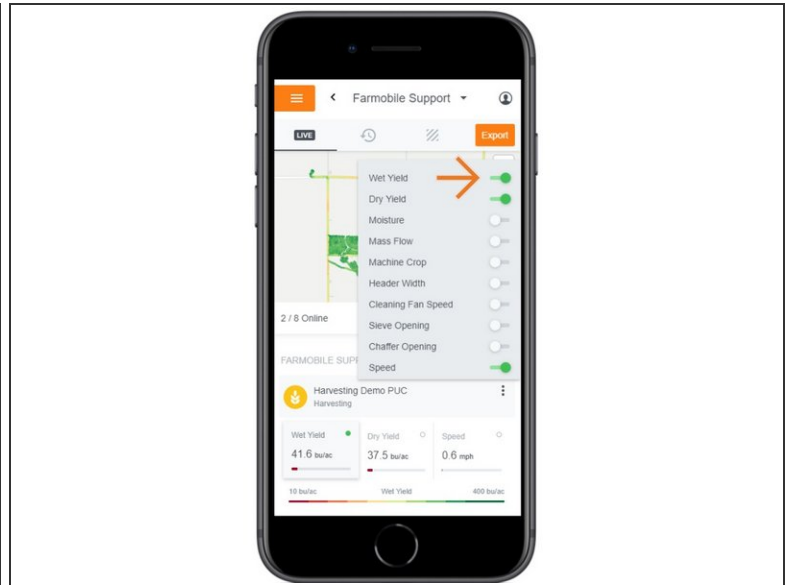
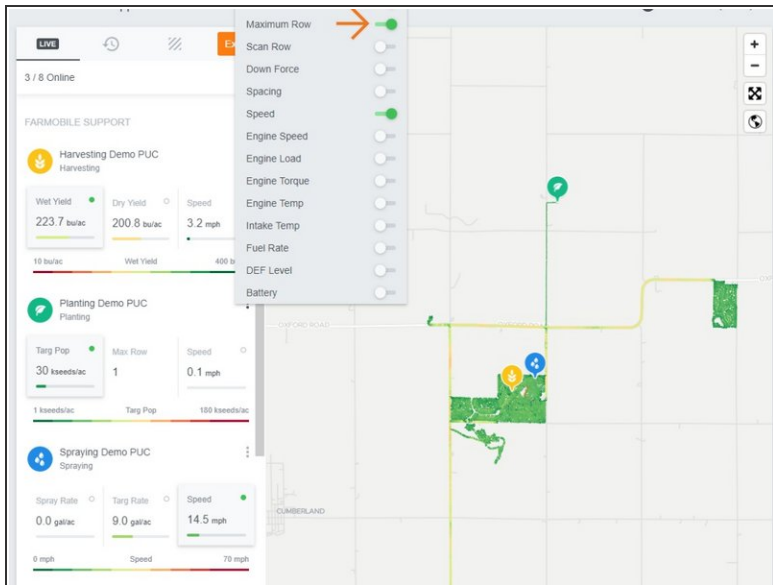
- Zoom the map in closer to your live Machines.
- As your map gets closer, the list of PUCs will expand to display three live attribute cards.
- The green icon indicates which attribute card is currently being displayed on the map.
- The map legend is located directly under the attribute cards.
- At any time, you can select a different attribute card for each machine to view the live heatmap.

Step 3 — Open Attribute Window



- Select the ellipse button by the PUC name to open the attribute menu.
- You control what three attribute cards are displayed!

Step 4 — View Different Attributes



- Enabled attributes are toggled on in Green.
- Select a different attribute to view it live.
- You can choose and view three attribute cards at a time.
- When you toggle on a new attribute, a previously selected attribute will toggle off.
- **Mobile:** For mobile you can select the Full Extent button (located directly under Zoom In / Zoom Out buttons) to view the map and legend in full extent.