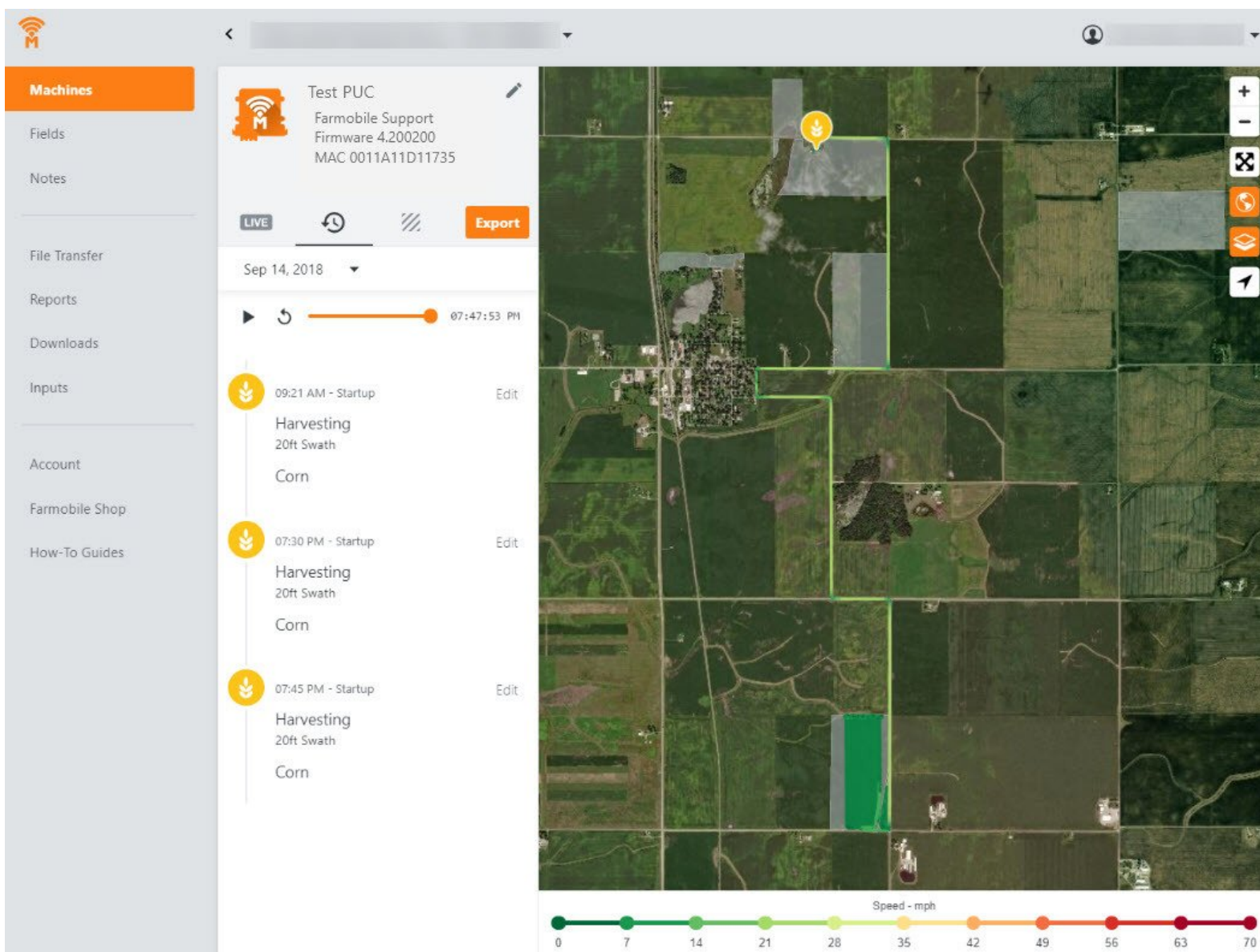




View A Machines Playback Timeline

Review your Machine history to see what activity occurred.

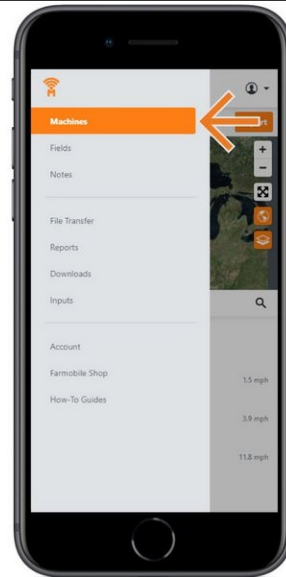
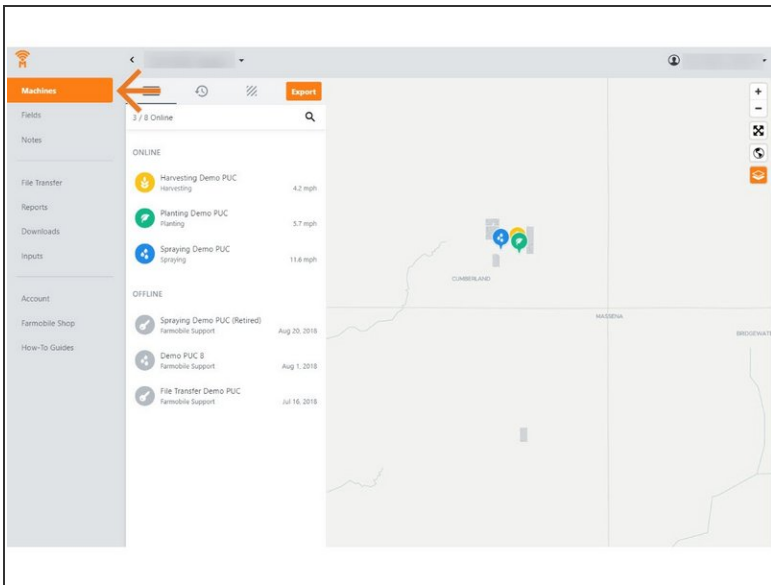
Written By: Support



INTRODUCTION

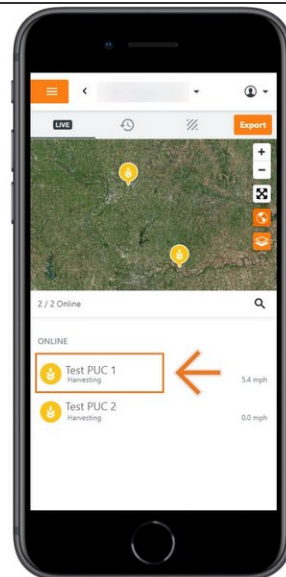
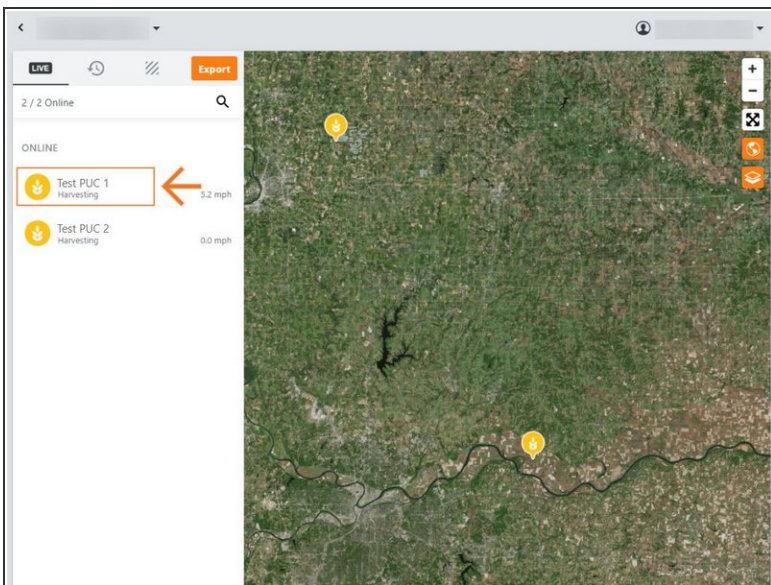
- Machine History is available at the grower and Machine levels.
- Grower level displays the list of Farmobile PUC™ devices that were active for the selected year.
- Machine level displays the daily activity for the selected Farmobile PUC device.
 - Each day displays every startup session.
 - The entire day of activity is displayed on the map, and using the playback tools you can navigate to specific times.

Step 1 — Select Machines from the Farmobile DataEngineSM Platform



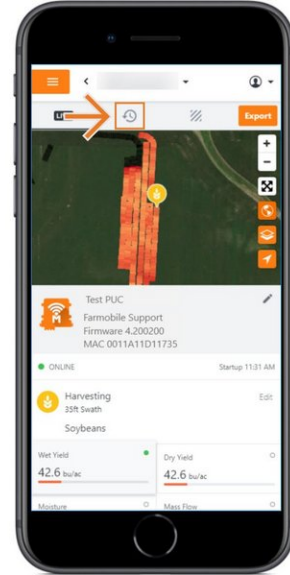
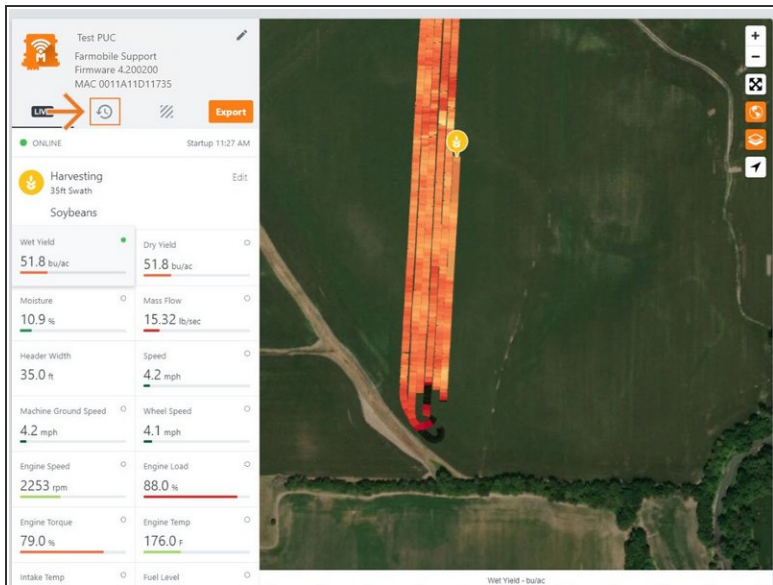
- Selecting Machines from the Farmobile DataEngine platform will open the Machines page with all of your Farmobile PUCTM device listed and displayed on the map.

Step 2 — Select a Machine



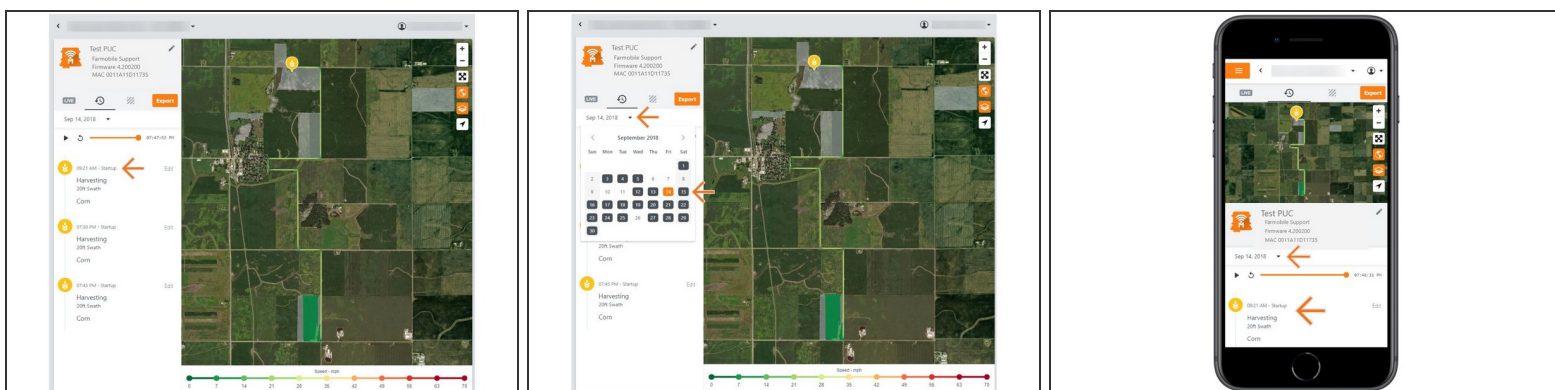
- Select a machine to open the machine details page.

Step 3 — Select History



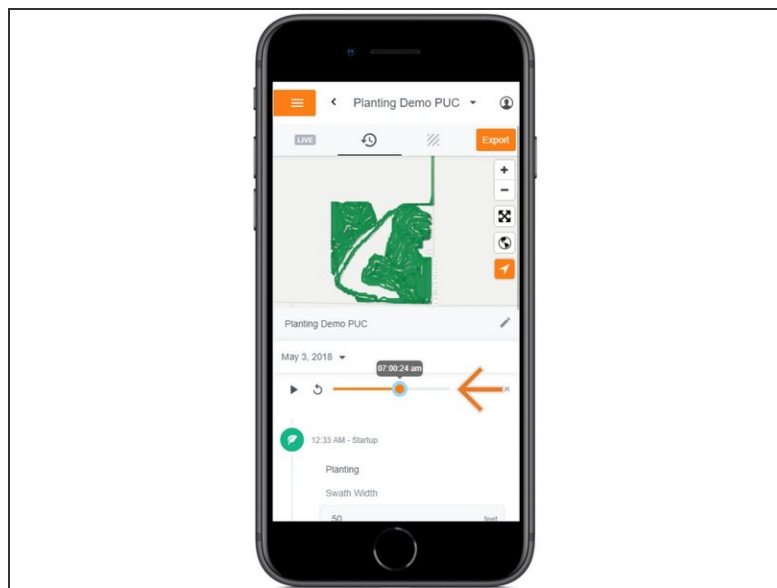
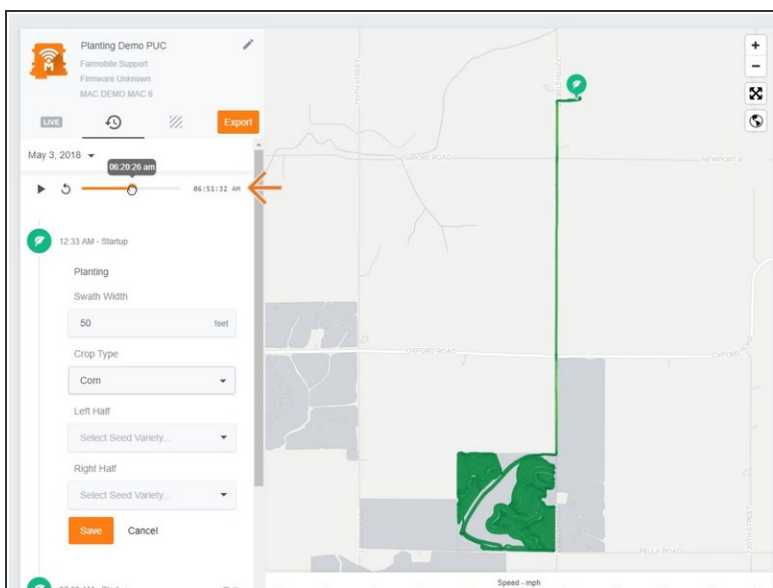
- Select the History tab to open the history page for the selected machine.
- The History page will open with the last active day selected.

Step 4 — Review your Machine Timeline



- The full day of activity will begin to draw on the map.
- Playback tool allows you to replay, pause, and view a specific time of the days activity.
- All of your Machine Startup sessions are listed in chronological order. They display the recorded activity type, swath width, crop type, and seed variety (planting only).
- Select the calendar picker to view a different day. Days containing Machine History are highlighted black.
- **Mobile:** For mobile you can select the full extent button (located directly under zoom in / zoom out buttons) to view the map and legend in full extent.

Step 5 — Playback Daily Activity



- The full day of activity will begin to draw on the map
- Playback tool allows you to replay, pause, and view a specific time of the day.
- Play: select play and the machine icon will begin to trace the path of your activity for that day.
- Pause: select pause to pause the playback.
- Selecting pause ALSO enables the time slider function which allows you to drag the slider to a specific time.
- Mobile: For mobile you can select the full extent button (located directly under zoom in / zoom out buttons) to view the map and legend in full extent.