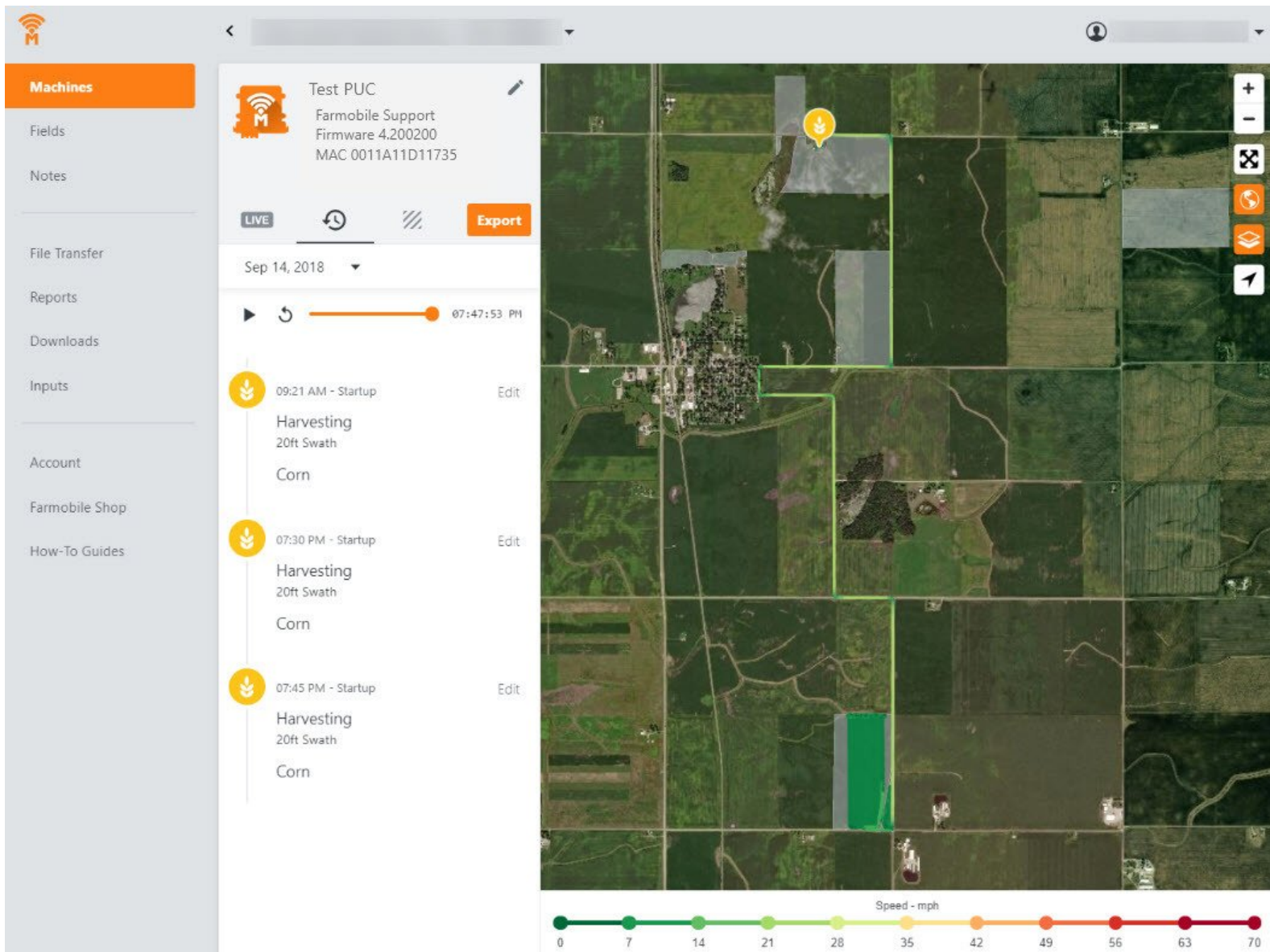




History - Machine Timeline

Review your Machine history to see what activity occurred.

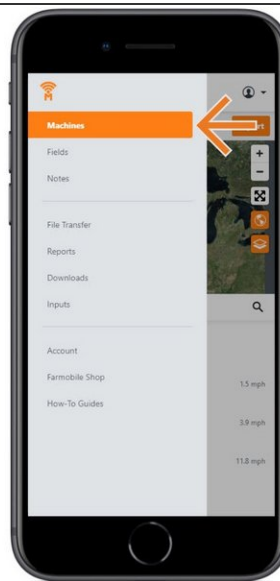
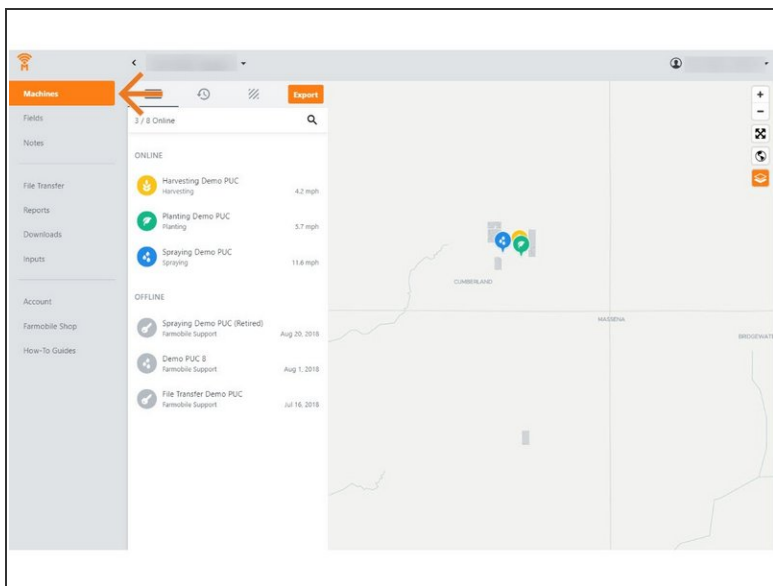
Written By: Support



INTRODUCTION

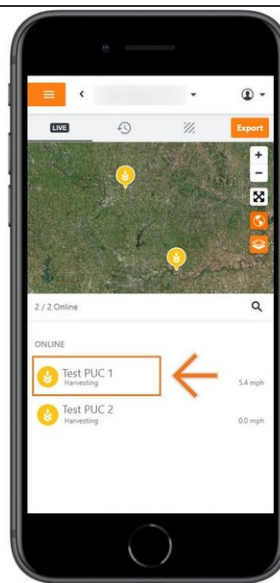
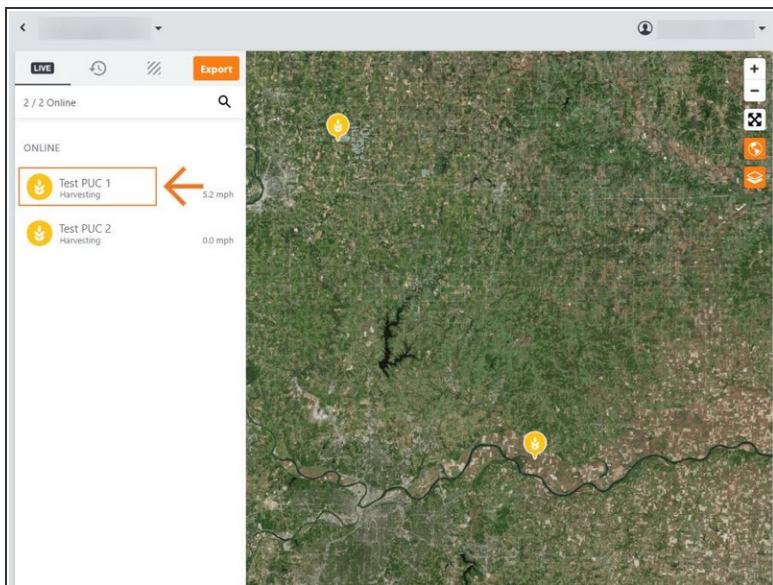
- Machine History is available at the grower and Machine levels.
- Grower level displays the list of PUCs that were active for the selected year.
- Machine level displays the daily activity for the selected PUC.
 - Each day displays every startup session.
 - The entire day of activity is displayed on the map, and using the playback tools you can navigate to specific times.

Step 1 — Select Machines from the Farmobile DataEngineSM Menu



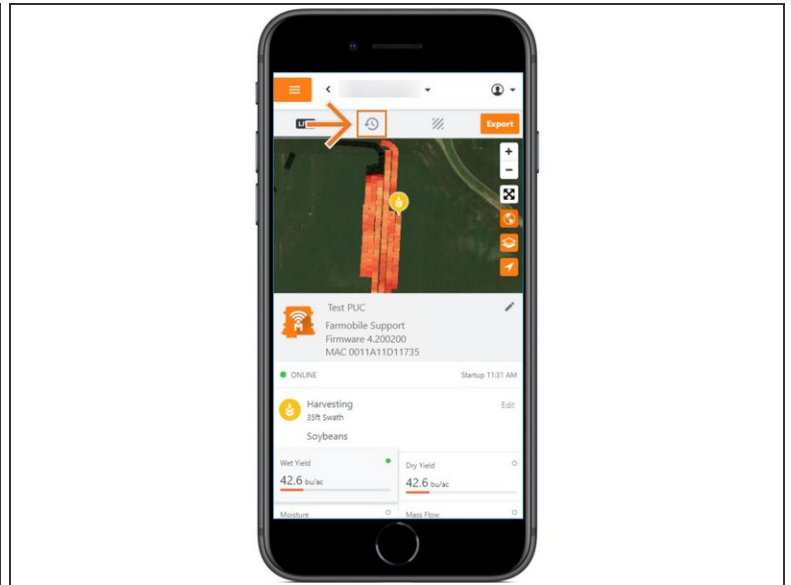
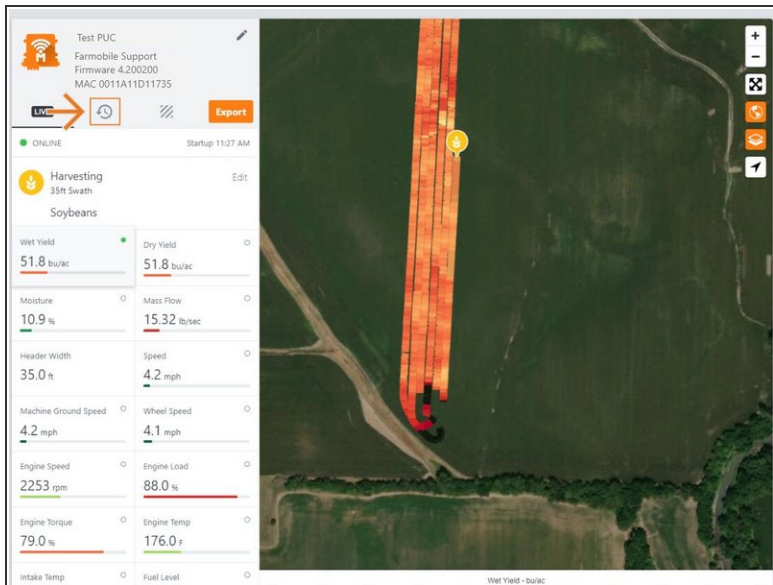
- Selecting Machines from the Farmobile DataEngine menu will open the Machines page with all of your PUCTM listed and displayed on the map.

Step 2 — Select a Machine



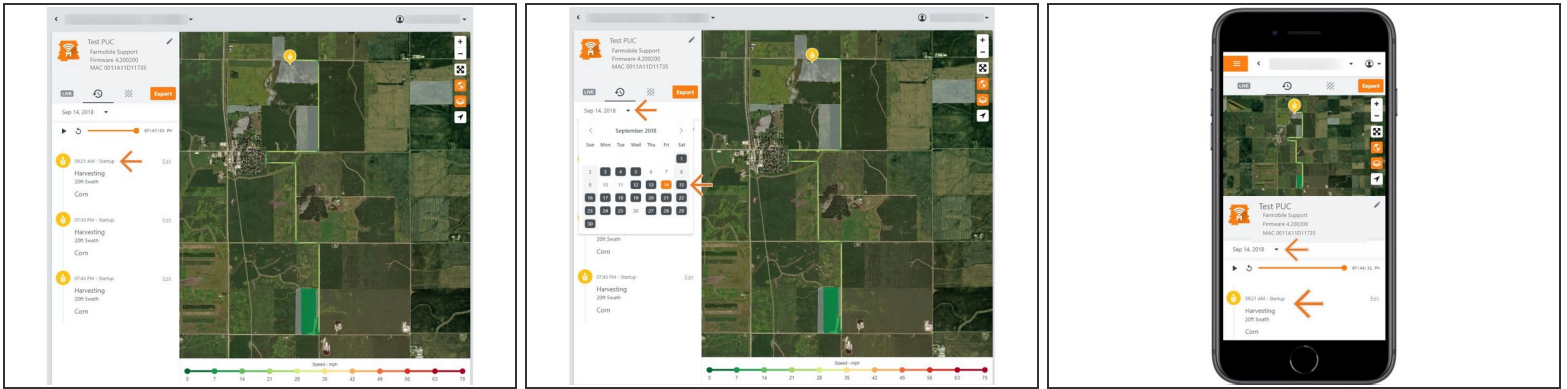
- Select a machine to open the machine details page.

Step 3 — Select History



- Select the History tab to open the history page for the selected machine.
- The History page will open with the last active day selected.

Step 4 — Review your Machine Timeline



- The full day of activity will begin to draw on the map.
- Playback tool allows you to replay, pause, and view a specific time of the days activity.
- All of your Machine Startup sessions are listed in chronological order. They display the recorded Activity Type, Swath Width, Crop Type, and Seed Variety (Planting Only).
- Select the calendar picker to view a different day. Days containing Machine History are highlighted black.
- **Mobile:** For mobile you can select the Full Extent button (located directly under Zoom In / Zoom Out buttons) to view the map and legend in full extent.