



Upload File or Folder

Upload a file or folder from Farmobile DataEngineSM platform to your Farmobile PUCTM device.

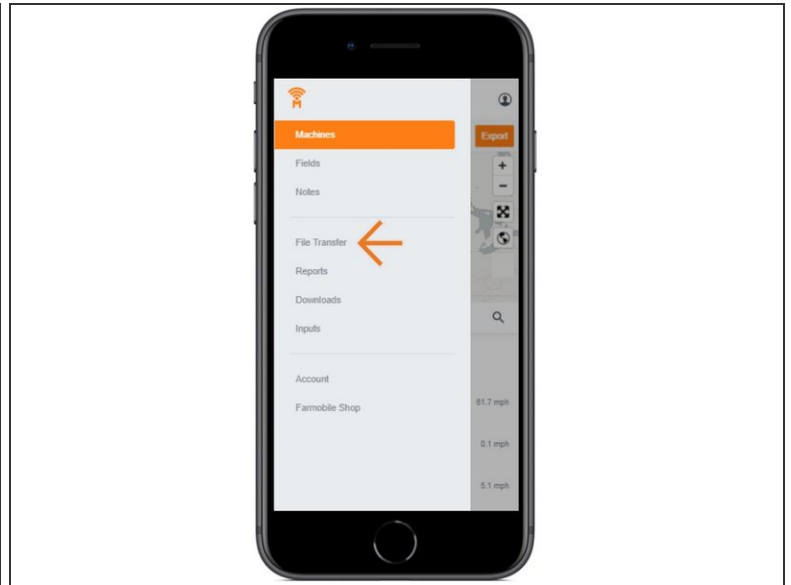
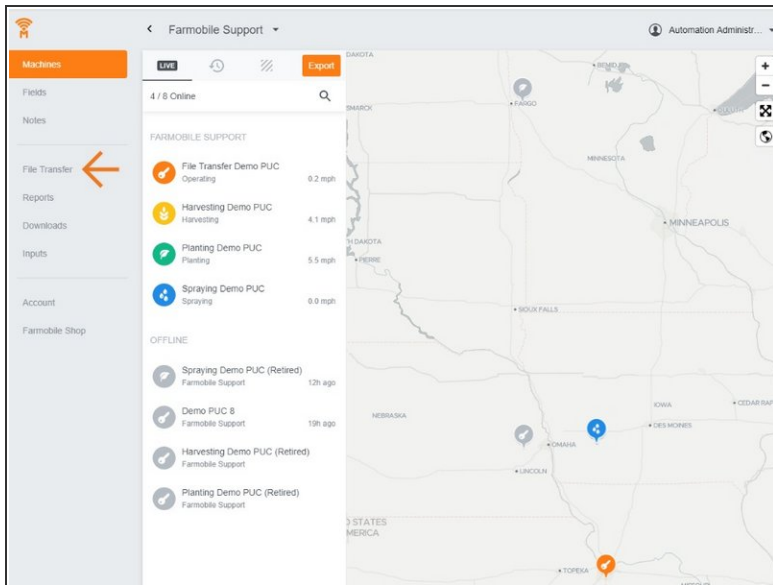
Written By: Support

The screenshot displays the Farmobile DataEngine web interface. On the left is a sidebar with navigation links: Machines, Fields, Notes, File Transfer (highlighted in blue), Reports, Downloads, Inputs, Account, and Farmobile Shop. The main content area is titled "Farmobile Support" and shows details for a "File Transfer Demo PUC" device, including its firmware (4.170000) and MAC address (0023A7CEDC68). It lists statistics: "Last seen 35s ago", "14 files", "10 folders", and "1 pending item". The "FILE TRANSFER" section on the right includes "Upload" and "New Folder" buttons. Below, a list of items is shown: a folder named "Rx", a folder named "viper", and a file named "Farmobile Harvest Data Out.imt" (3 kb, Oct 13, 2017 4:13 pm). Each item has a checkbox for selection.

INTRODUCTION

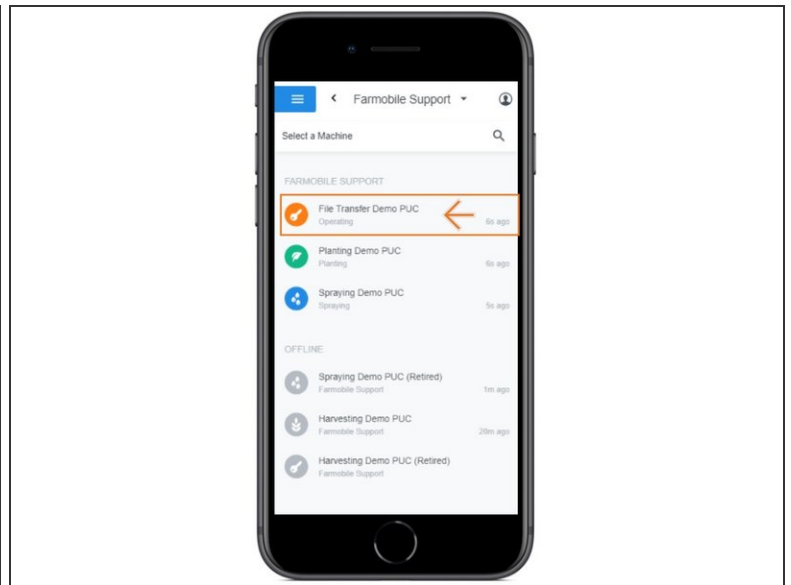
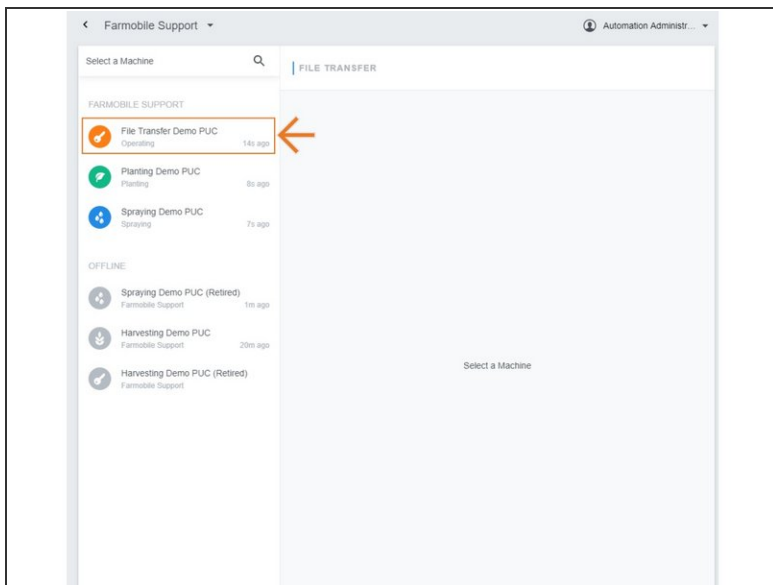
- Ability to Upload files or folders to Farmobile PUC devices.
- Upload works for both online and offline Farmobile PUC device
 - Files sync in real time with all online devices.
 - Files sync in real time with offline devices once they become active. While offline, any files or folders uploaded will be staged and set to pending status until the Farmobile PUC device comes online.

Step 1 — Select File Transfer from the Farmobile DataEngineSM Platform



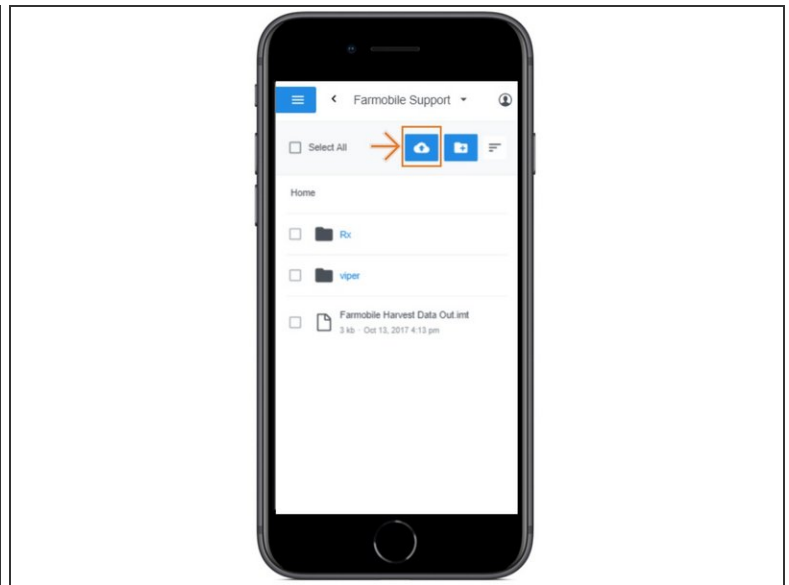
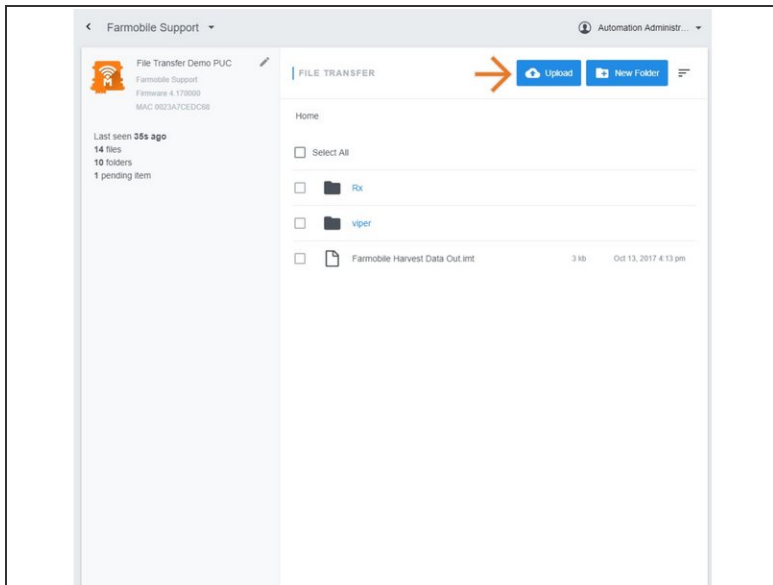
- Selecting File Transfer from the Farmobile DataEngine platform menu will open the File Transfer page with all of your Farmobile PUC devices listed.

Step 2 — Select a Farmobile PUC Devices



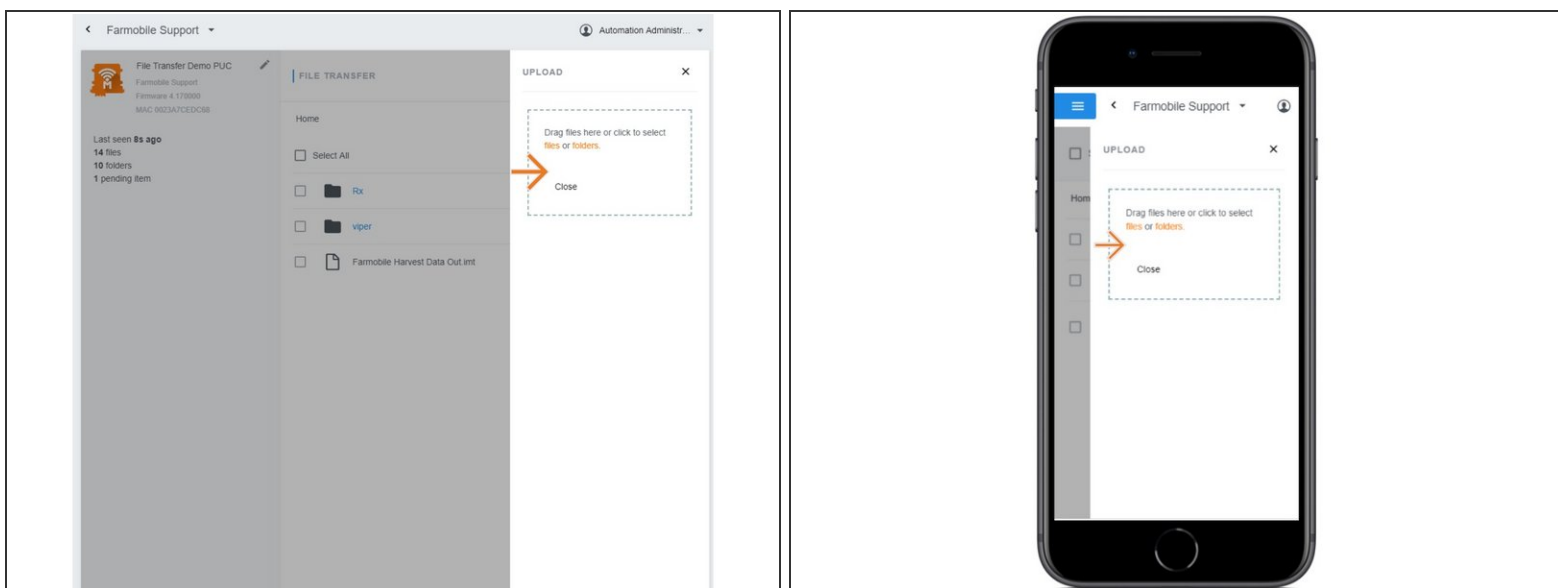
- From the list of Farmobile PUC devices, select the required device to upload a file or folder to.

Step 3 — Select Upload



- Select 'Upload' to open the upload window.

Step 4 — Upload File or Folder



- Within the upload window, you can drag and drop files and folders or navigate to the file or folder location to upload.
- The File or Folder will be added to the list associated to the Farmobile PUC device.
- A status label is included tracking the file or folder progress.