



Upload File or Folder

Upload a File or Folder from Farmobile DataEngine to your PUC.

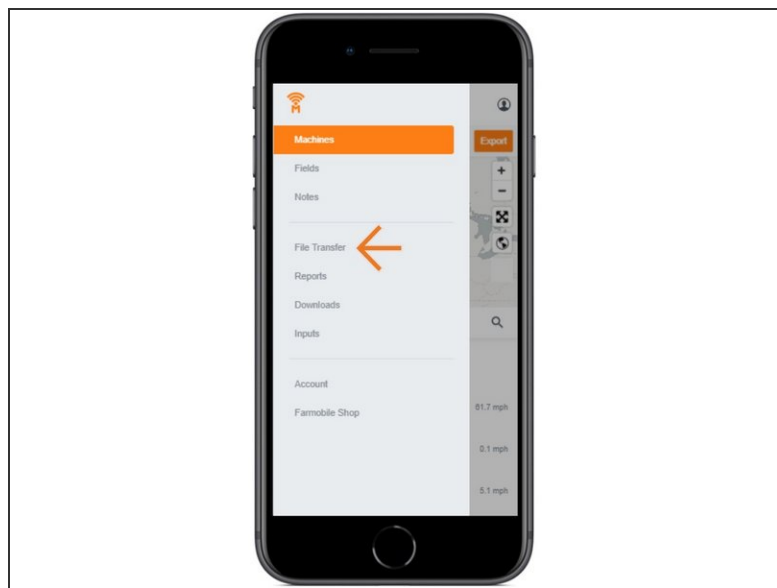
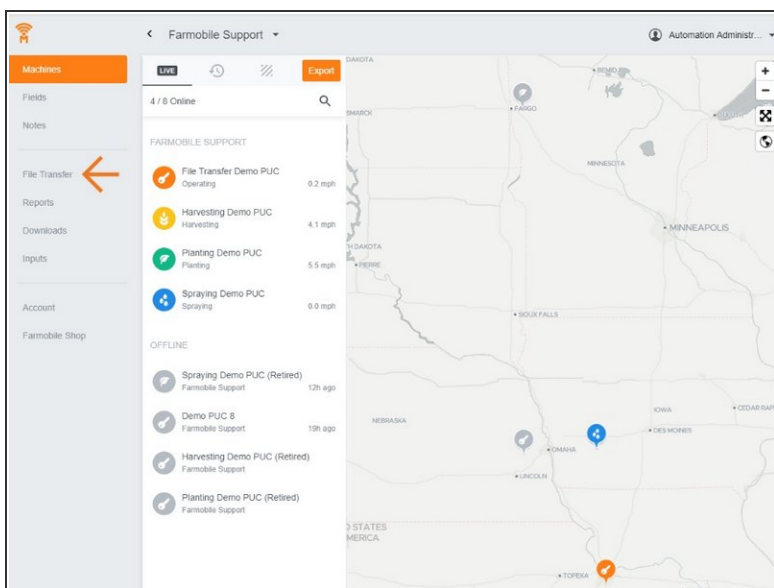
Written By: Support

The screenshot displays the Farmobile DataEngine web interface. On the left is a sidebar with navigation links: Machines, Fields, Notes, File Transfer (highlighted in blue), Reports, Downloads, Inputs, Account, and Farmobile Shop. The main content area is titled "Farmobile Support" and shows details for a "File Transfer Demo PUC", including its firmware version (4.170000) and MAC address (0023A7CEDC68). It also lists statistics: "Last seen 35s ago", "14 files", "10 folders", and "1 pending item". On the right, the "FILE TRANSFER" section includes "Upload" and "New Folder" buttons. Below these, a list of items is shown under the heading "Home": a "Select All" checkbox, a folder named "Rx", a folder named "viper", and a file named "Farmobile Harvest Data Out.imt" (3 kb, Oct 13, 2017 4:13 pm). The user "Automation Administr..." is logged in at the top right.

INTRODUCTION

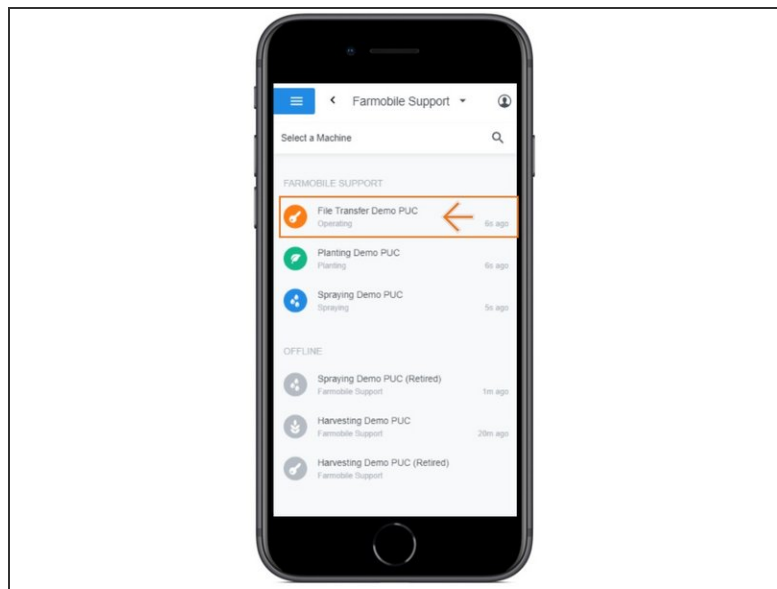
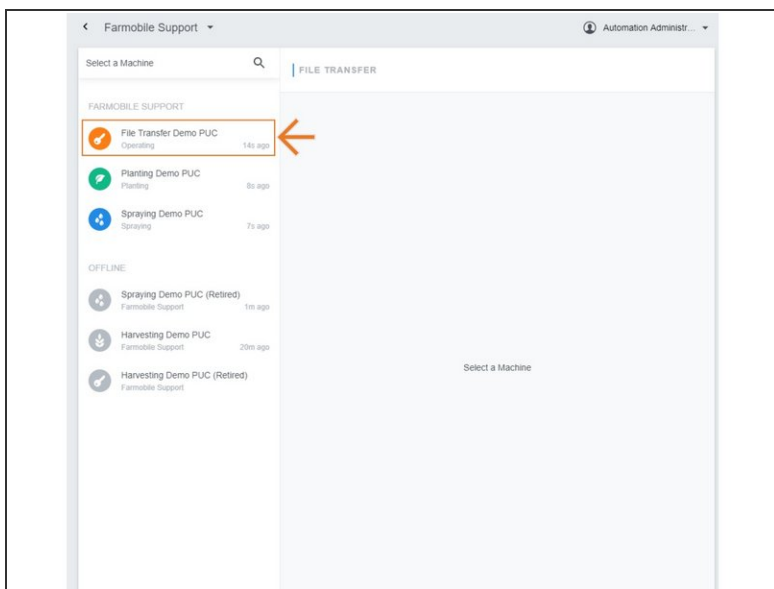
- Ability to Upload files or folders to PUCs
- Upload works for both Online and Offline PUCs
 - Files sync in real time with all Online PUCs.
 - Files sync in real time with Offline PUCs once they become Active. While Offline, any files or folders uploaded will be staged and set to pending status until the PUC comes Online.

Step 1 — Select File Transfer from the Farmobile® DataEngineSM Menu



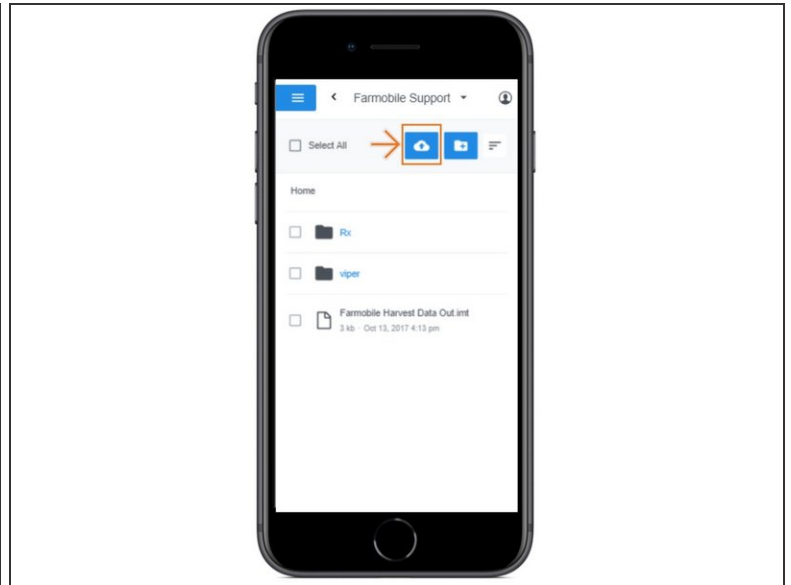
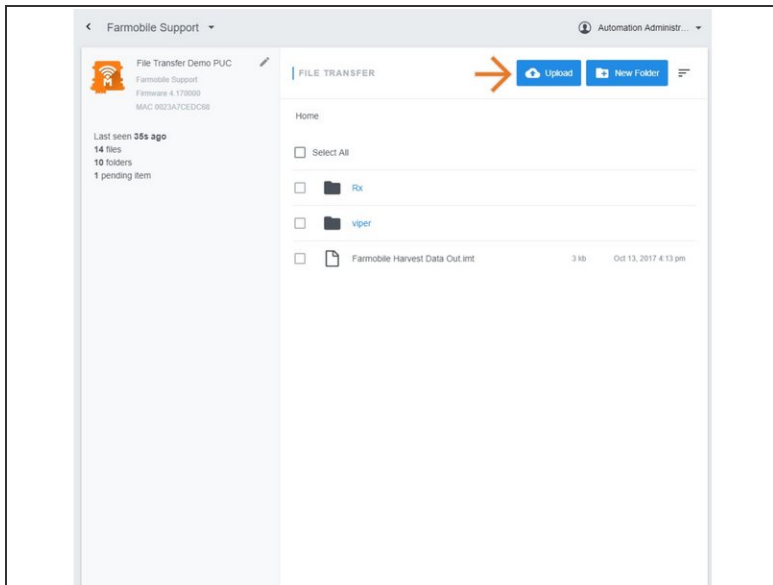
- Selecting 'File Transfer' from the Farmobile® DataEngineSM menu will open the File Transfer page with all of you PUCs listed.

Step 2 — Select a PUC



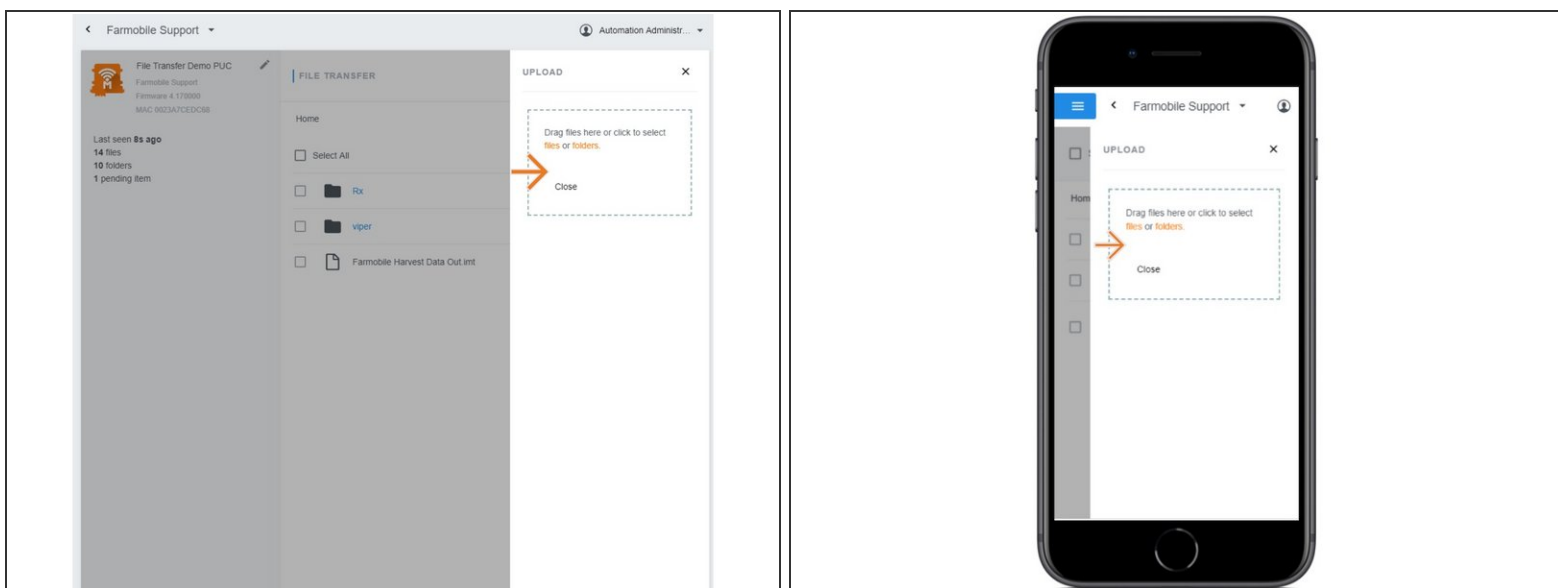
- From the list of PUCs, select the required PUC to upload a file or folder to.

Step 3 — Select Upload



- Select 'Upload' to open the upload window.

Step 4 — Upload File or Folder



- Within the upload window, you can drag and drop files and folders or navigate to the file or folder location to upload.
- The File or Folder will be added to the list associated to the PUC.
- A status label is included tracking the file or folder progress.