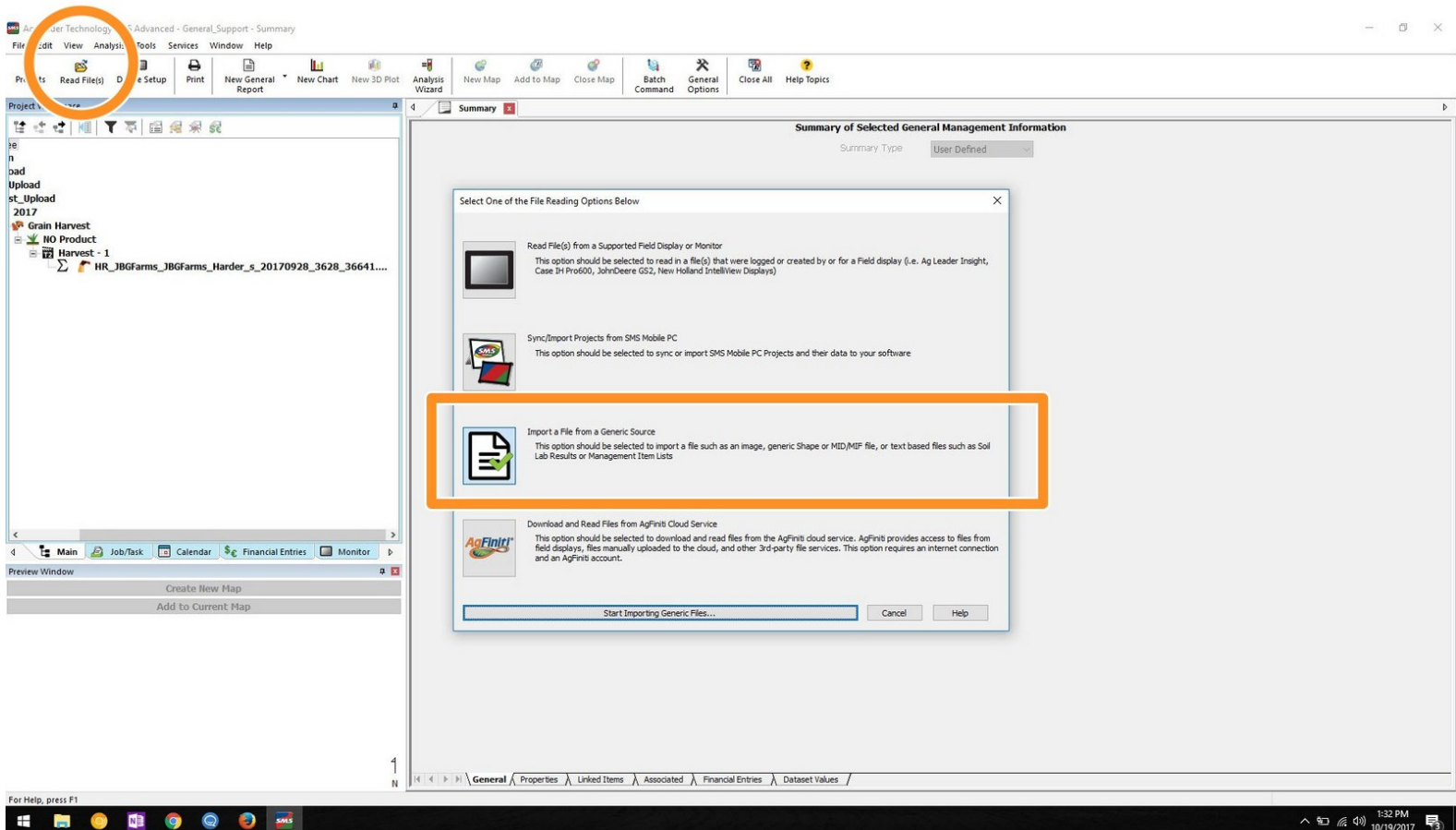




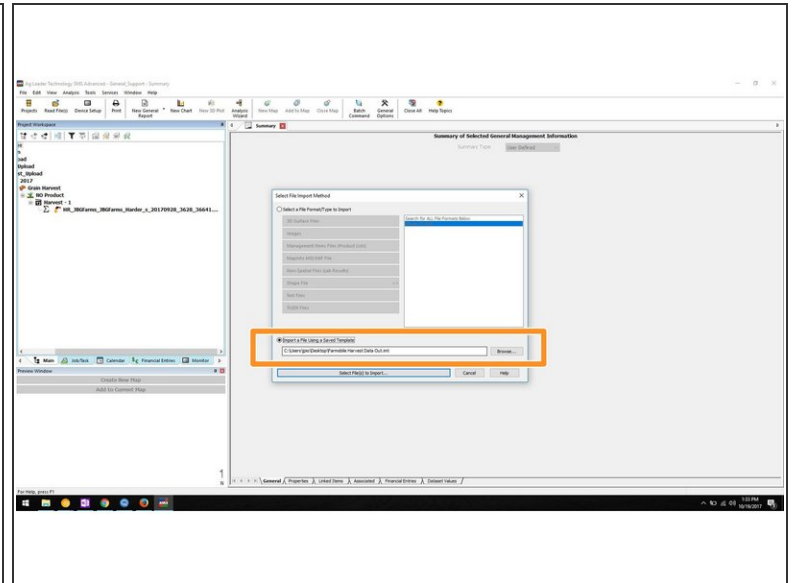
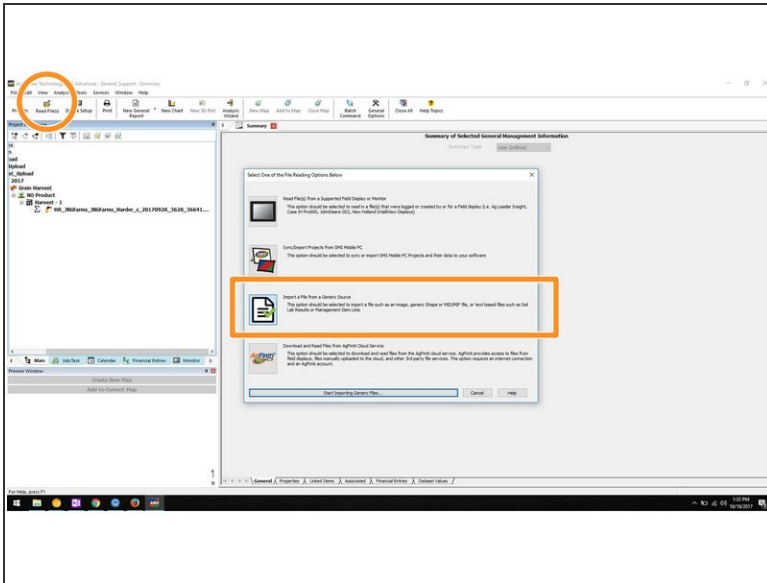
Export data to Ag Leader's SMS

This Guide will assist users to Export Data Out from Farmobile's EFR & import into Ag Leader's SMS

Written By: Support

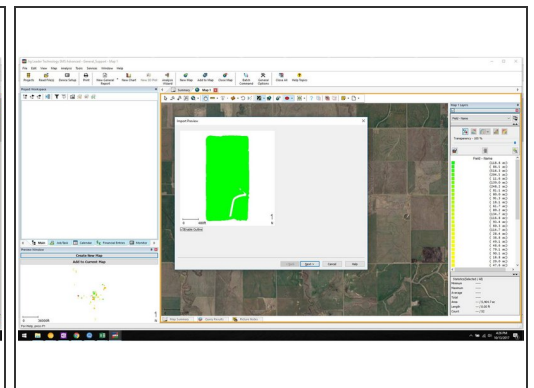
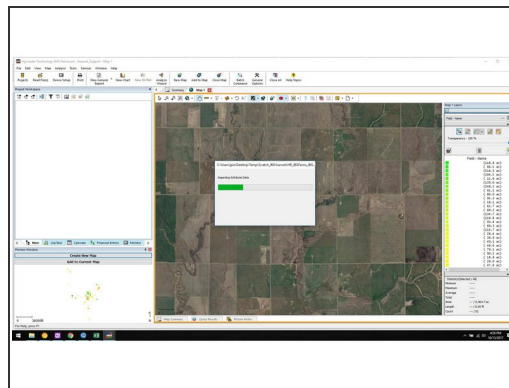
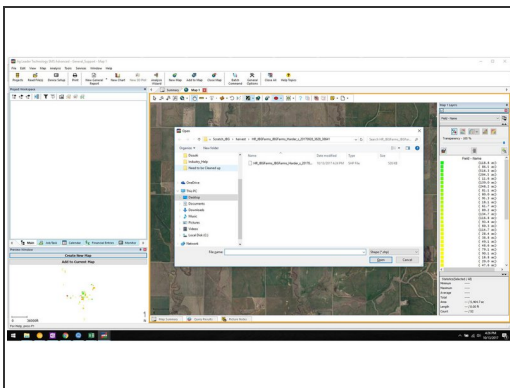


Step 1 — Begin Upload (Read) Process



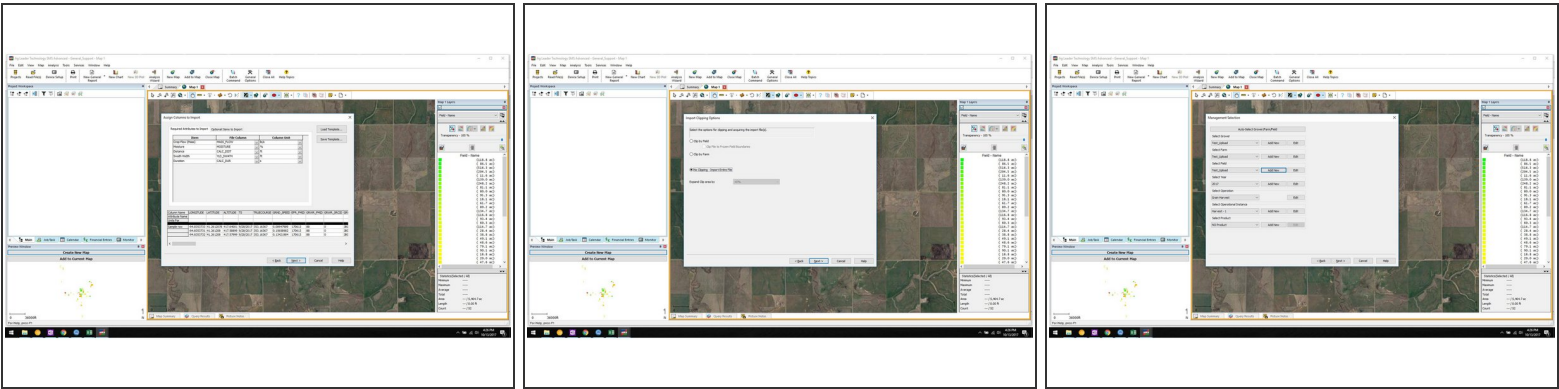
- When you begin to Read Files, Select *Import a File from a Generic Source*
- Ensure you select the option *Import a File Using a Saved Template*. Please Click [here](#) to download the Template needed for Farmobile Data.

Step 2 — Upload your Farmobile .Shp File



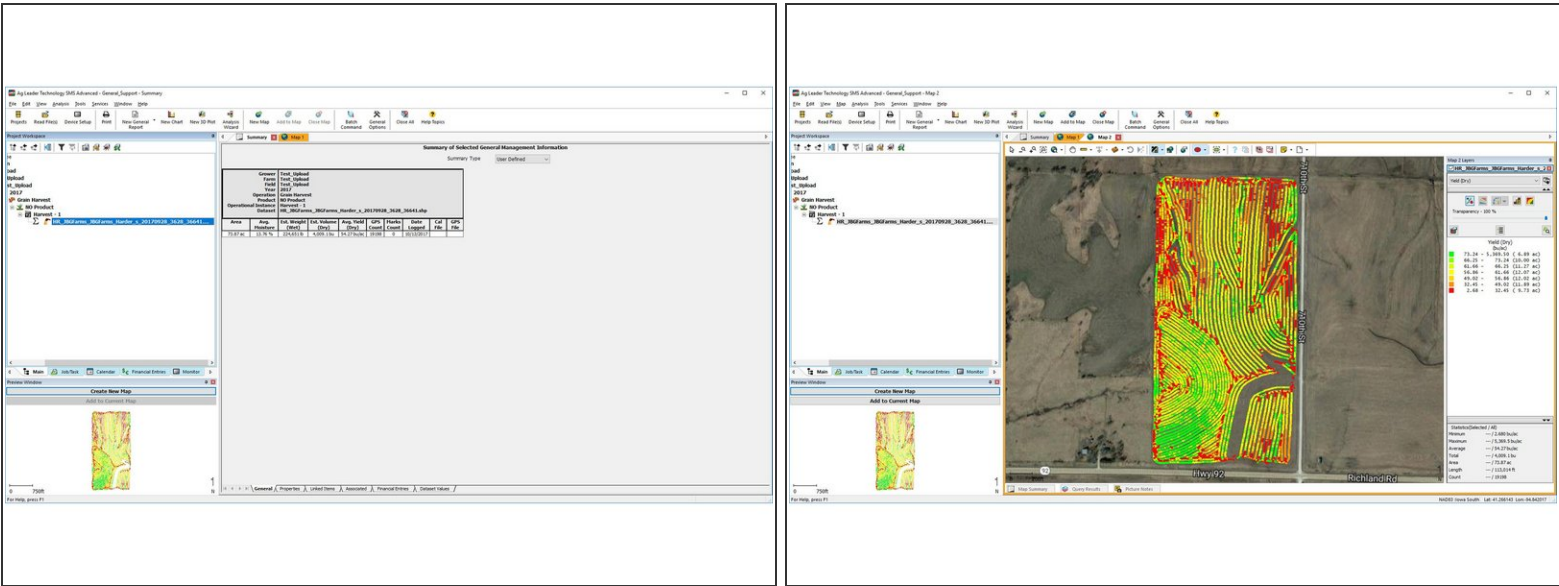
- After you Export your Data from Farmobile. You will begin uploading the .SHP file into Agleaders SMS

Step 3 — Make Setting Adjustments



● Insert wisdom here.

Step 4 — Display the Data



● Your Data Upload should now be completed.