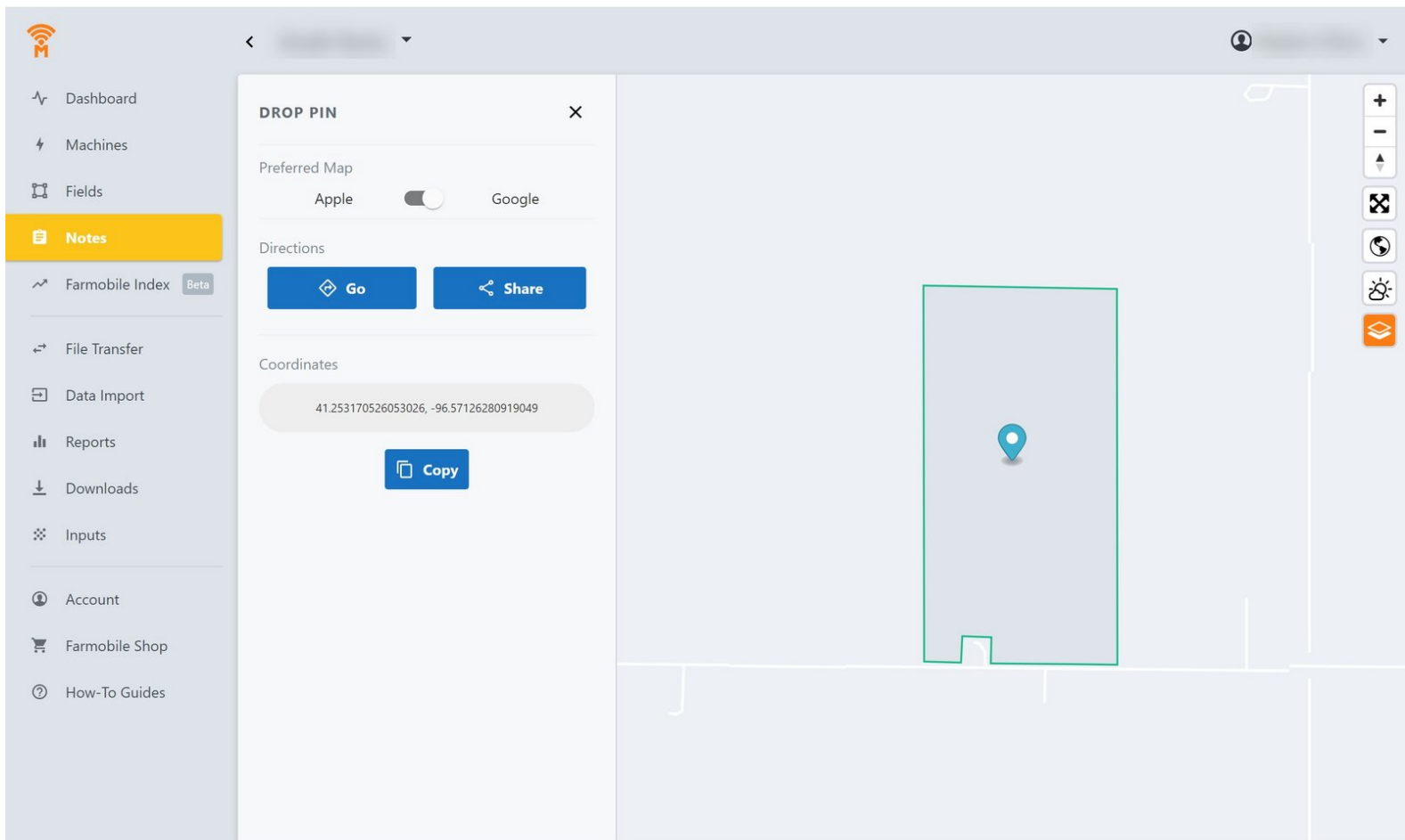




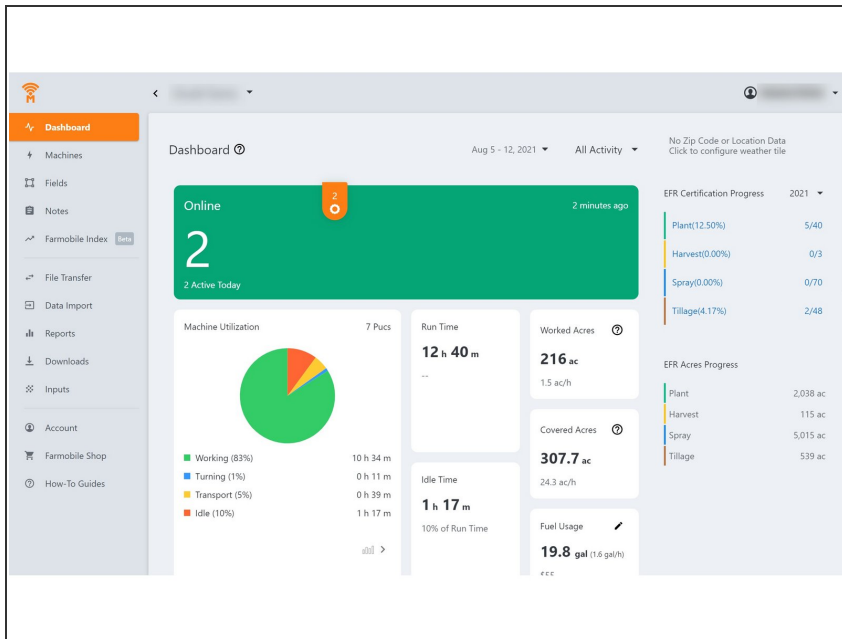
Drop a Pin

Here you can drop a pin to help operators or users to navigate to your location.

Written By: Support

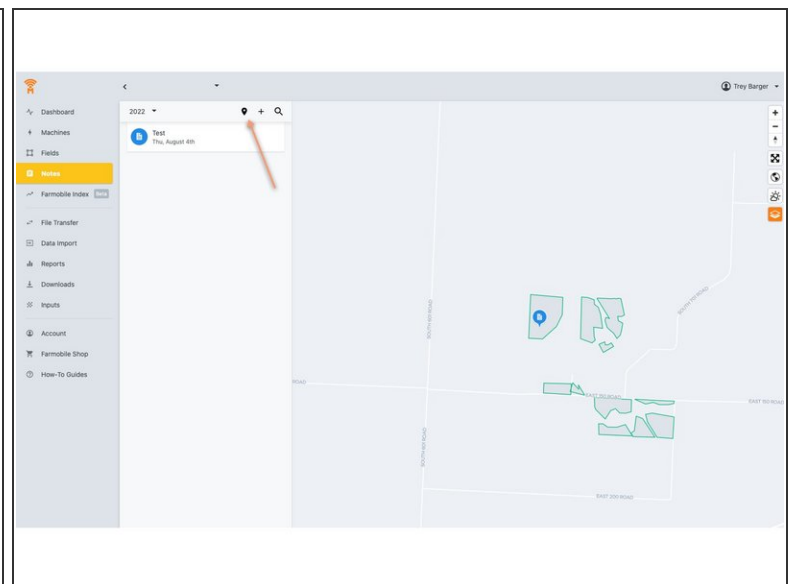
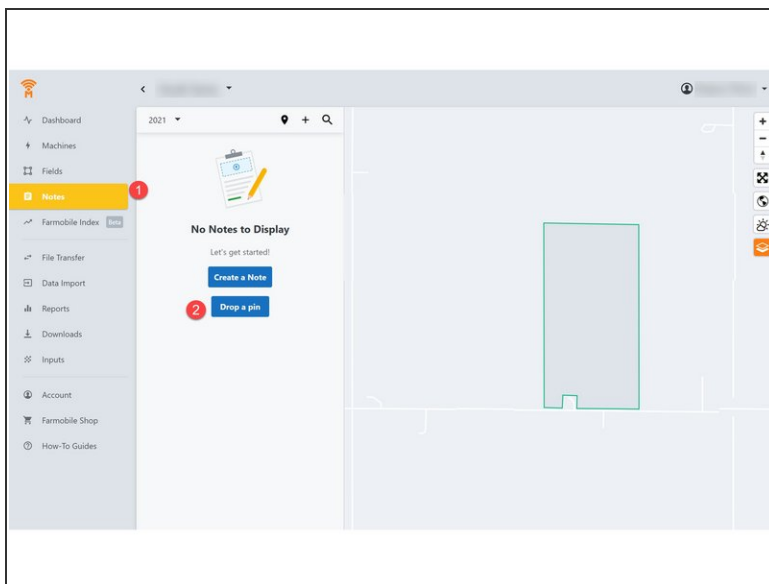


Step 1 — Log In



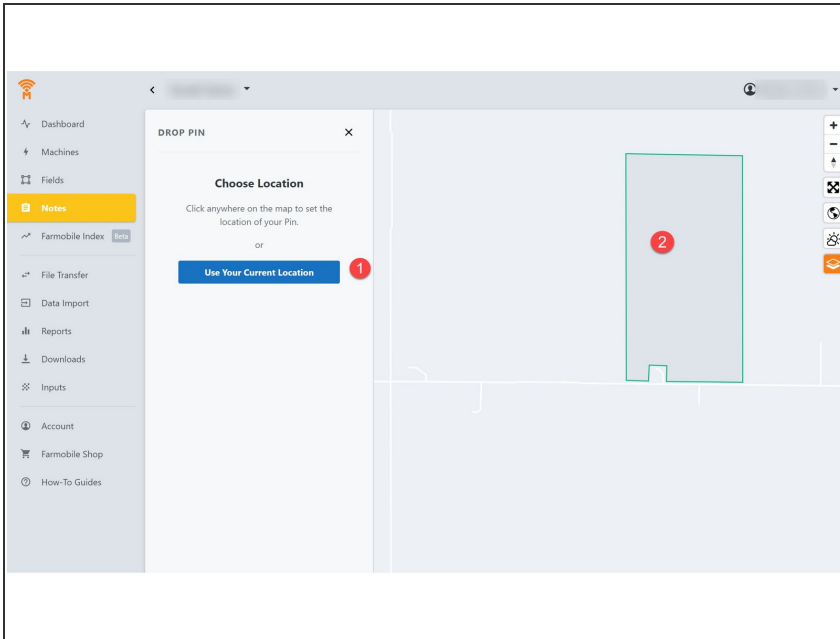
- Navigate to your Farmobile DataEngineSM account.

Step 2 — Notes Tab



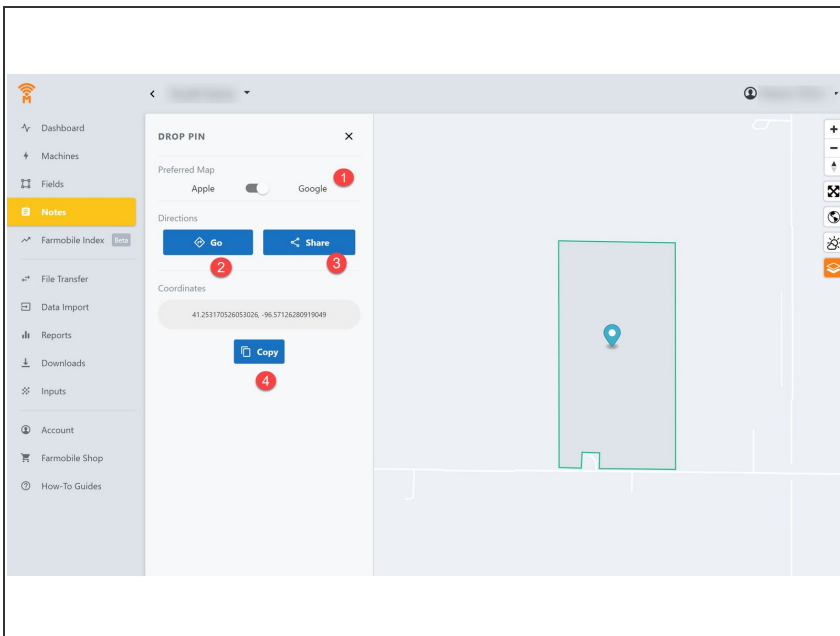
- 1. Navigate to the Notes Tab
- 2. Select the option to "Drop a Pin"
- If you have any saved "Notes" to drop a pin you will need to select the Pin icon at the top of the page.

Step 3 — Drop Pin



- Users can drop a pin in one of two ways:
- 1. If "Use your current Location" is selected, the will drop a pin at the current location of the device you are using.
- 2. OR, select anywhere on the Farmobile map window and click the spot you want to drop a pin.

Step 4 — Share Location



- Select either Google or Apple Maps, depending on the user's device.
- If the user is the person trying to navigate to the field, select "GO" and the location will open in Maps.
- If the pin is to be shared to another individual, select "Share". This allows the user to text their location.
- The pin location can also be copied to the clipboard if the user prefers to share the coordinates via email.