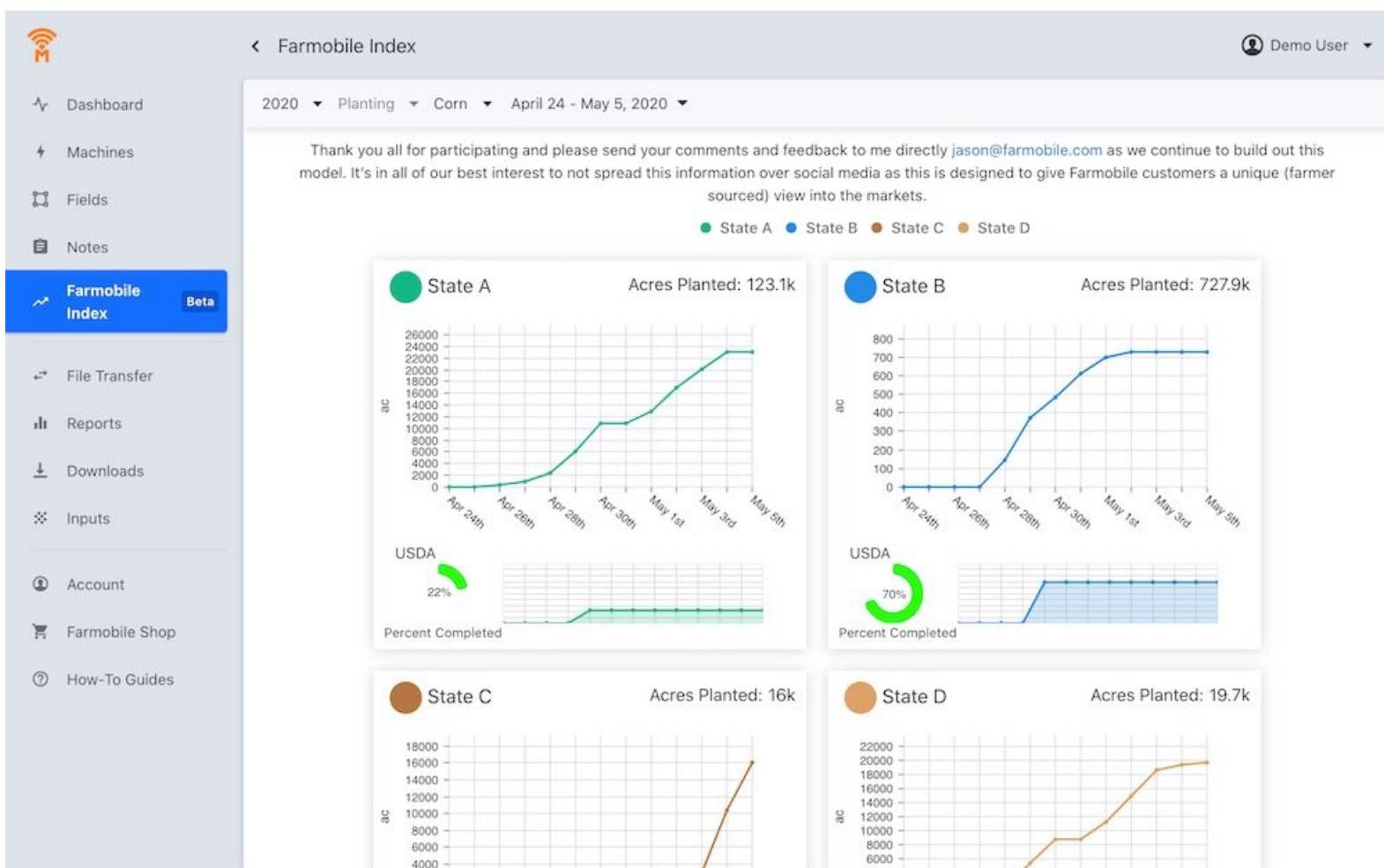




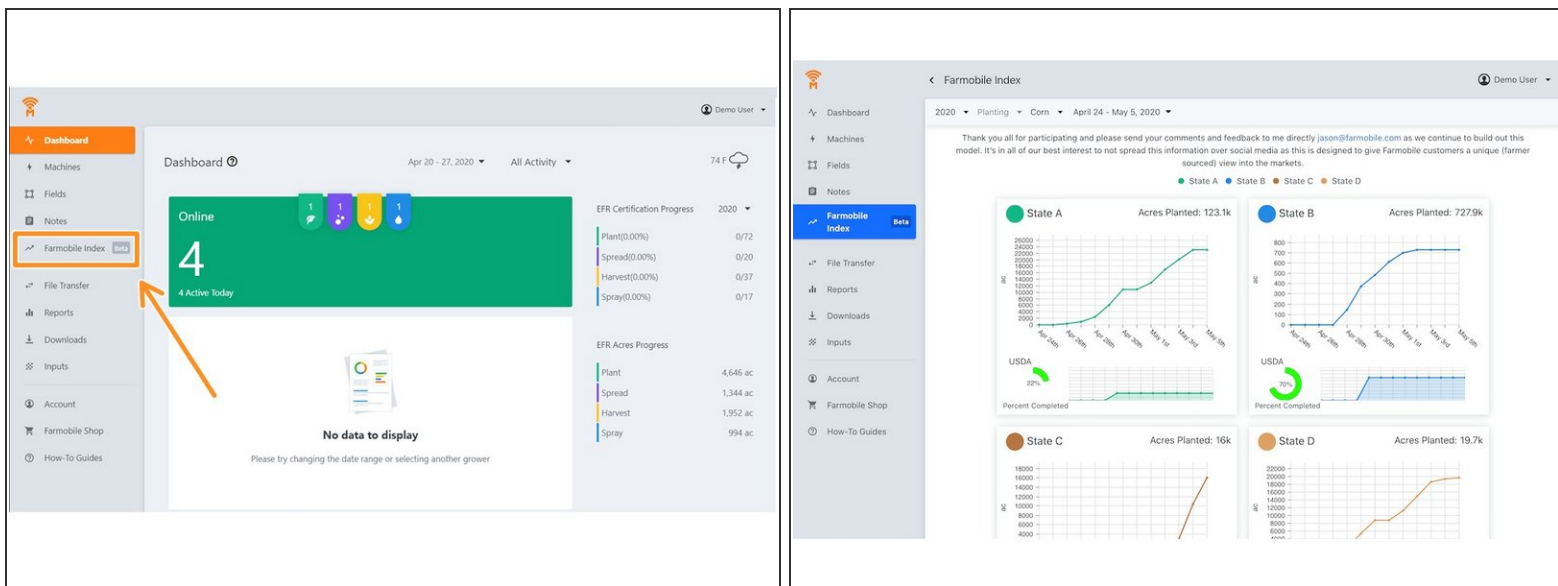
Farmobile Index navigation tips

This guide will assist users in navigating through the Farmobile Index

Written By: Support

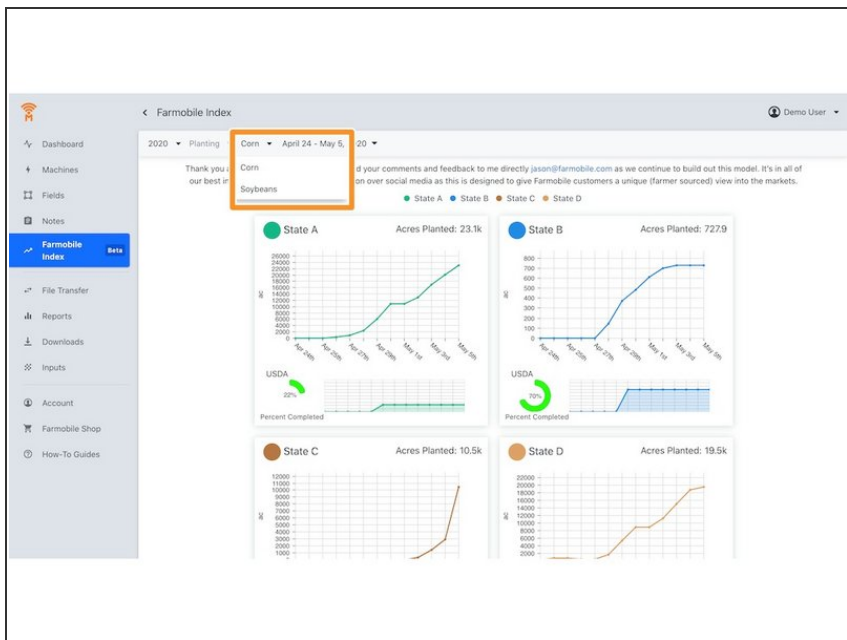


Step 1 — Accessing the Farmobile Index



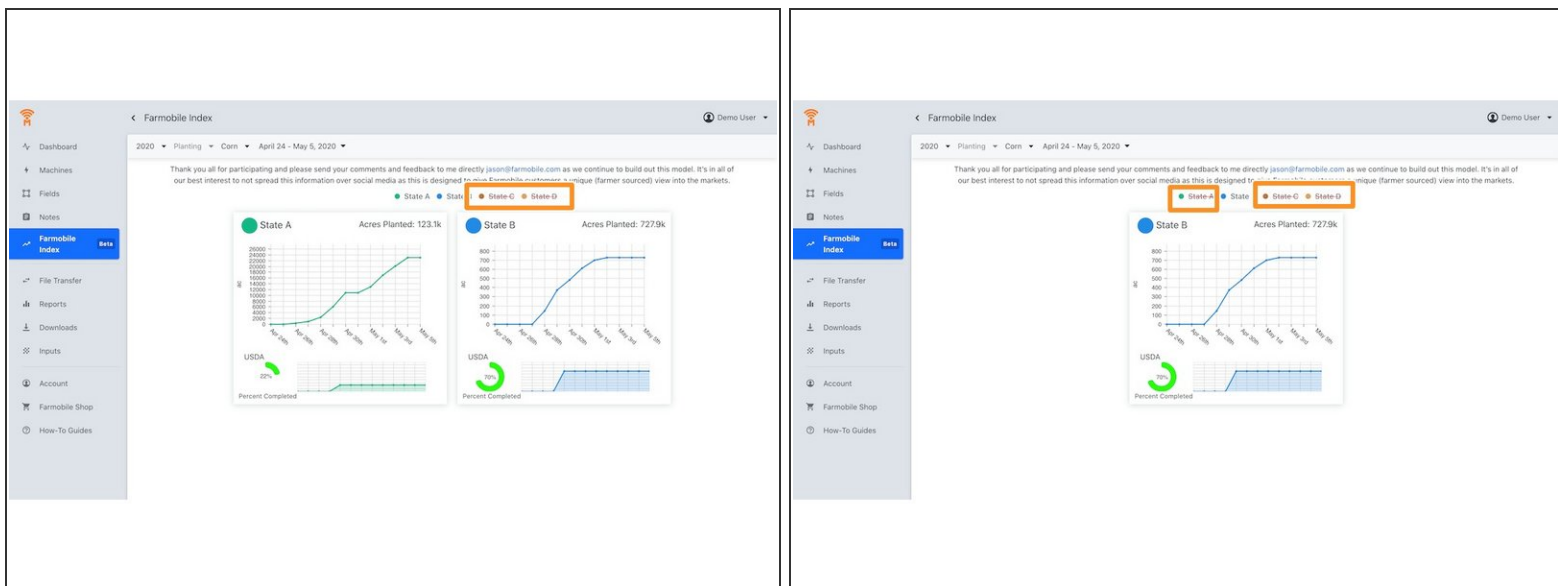
- When logged into Farmobile DataEngineSM account. Click on "Farmobile Index" on the menu located on the left side of the screen.

Step 2 — Crop Selection



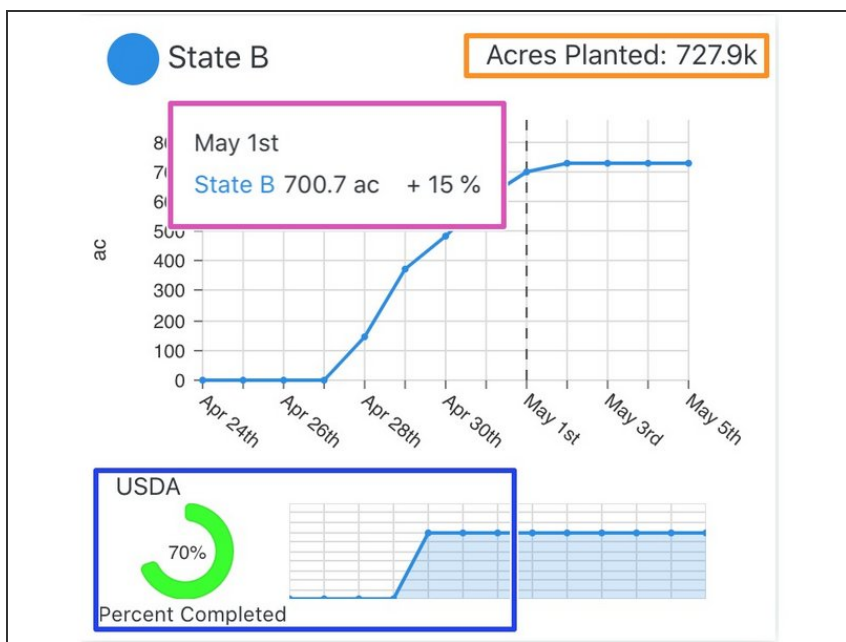
- Users can utilize the Crop Selection dropdown if they would like to filter the data to a specific crop (Corn or Soybean).

Step 3 — Filter to display specific States



- If users would like to review only certain States, they can simply select the State they would like to hide.
- Users can simply reselect the State to displayed again.

Step 4 — Data Introduction



- **Orange Box-** Users can review the acres currently planted/harvested by the crowd sourced Farmobile data for each given state.
- **Purple Box-** When users navigate to a certain date on the graph, a pop-up will display the acres planted as of that date + the USDA percent completed.
- **Blue Box-** Users can compare the released USDA numbers of Percent Complete based off of planted/harvested activities for each state.