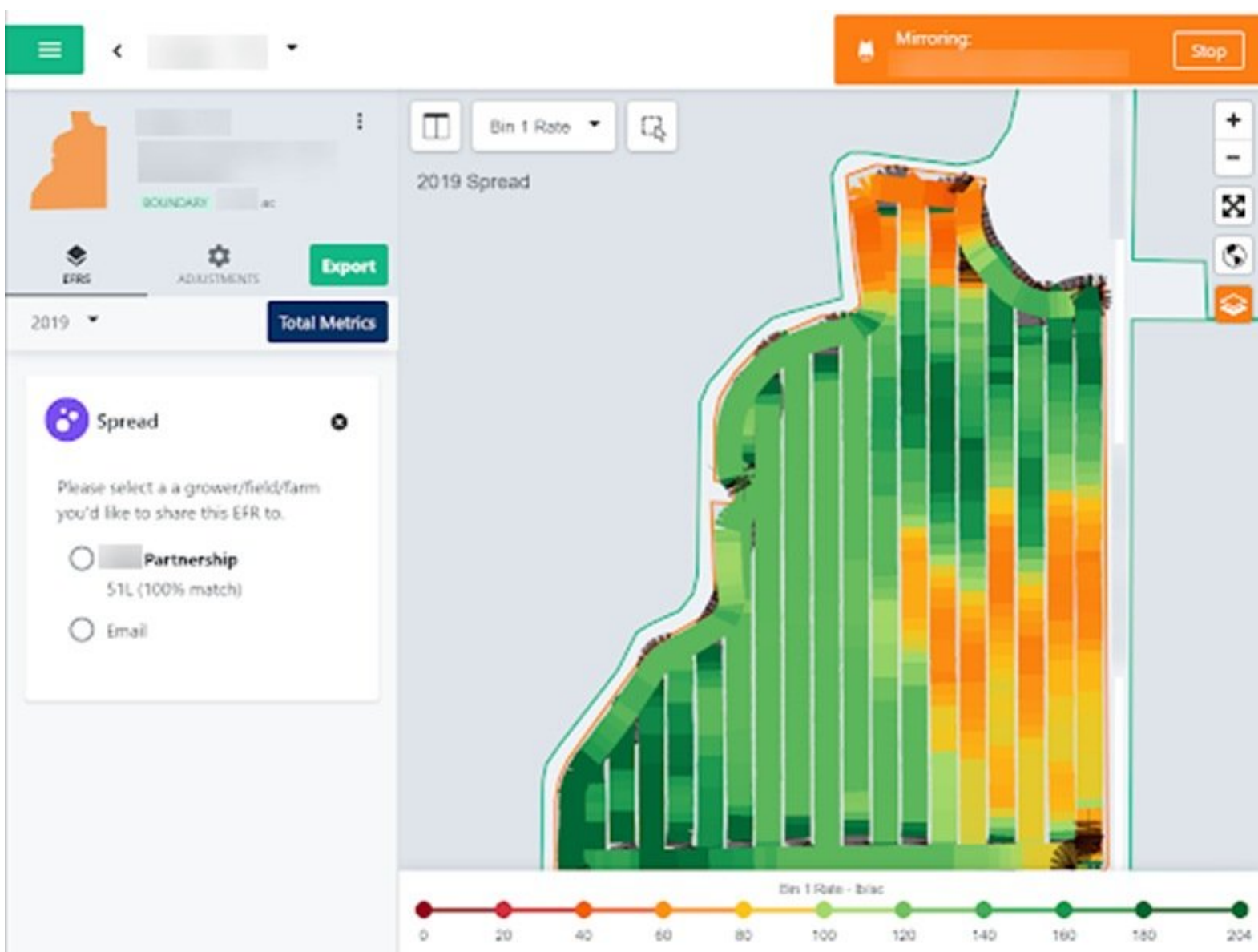




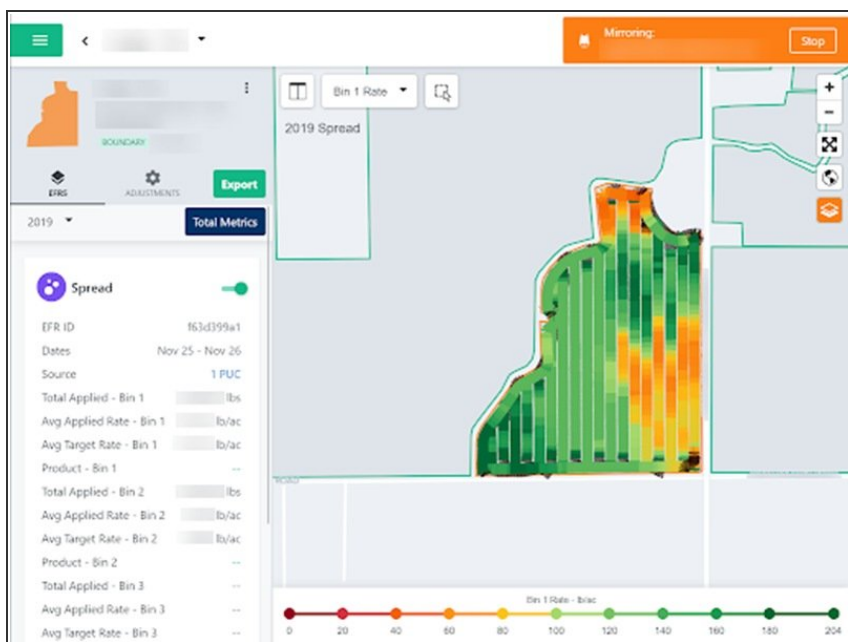
EFR Sharing

Share EFRs (Electronic Field Records) via the Farmobile DataEngineSM platform with other Farmobile Users as well as Non-Farmobile users.

Written By: Support

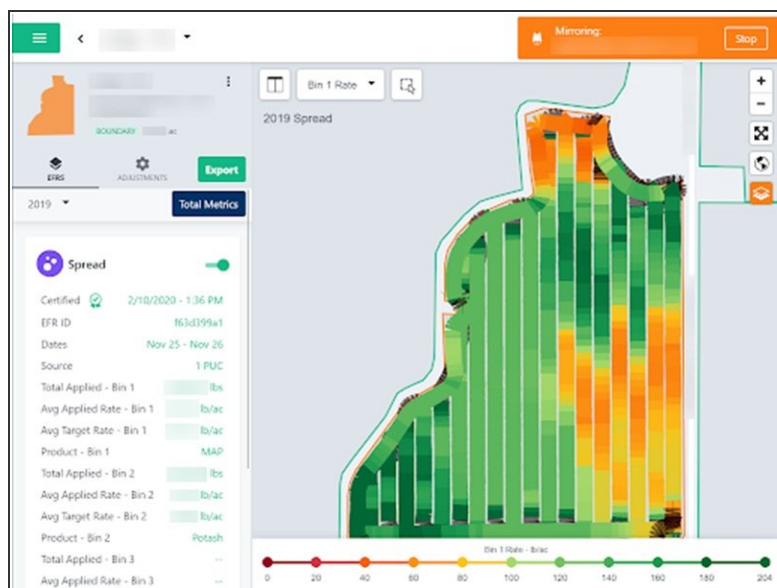
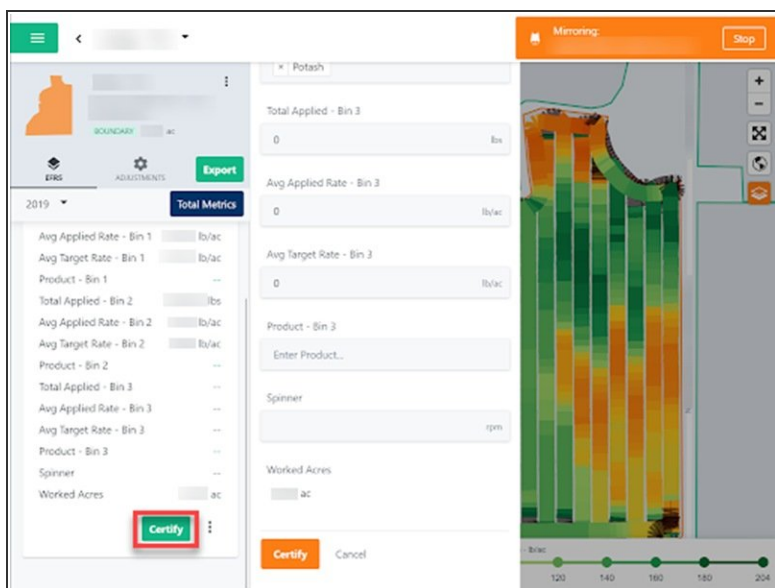


Step 1 — Select an EFR to share



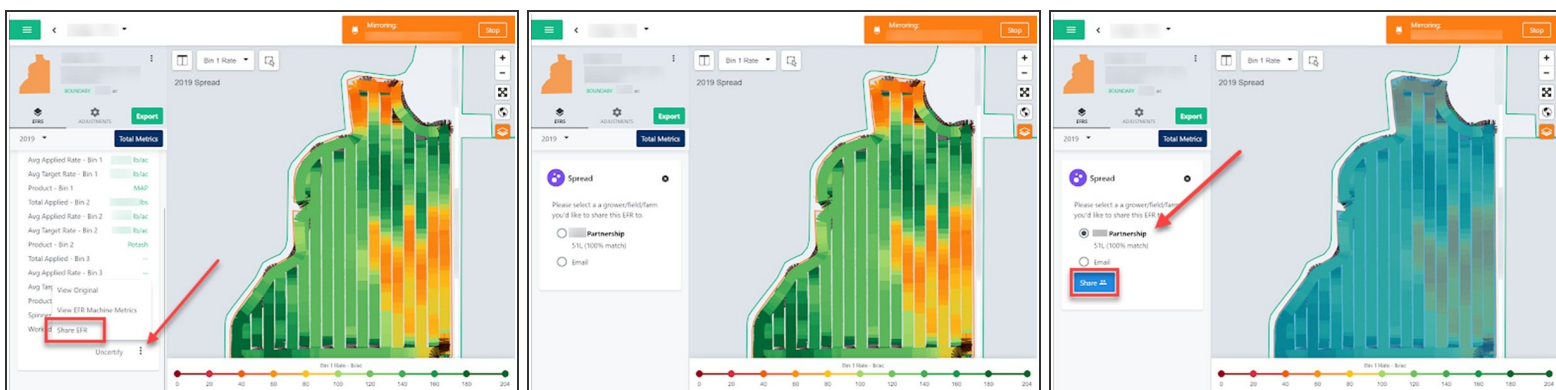
- In the Fields tab, navigate to an EFR that needs to be shared.
- Click on a field within your field list.
- Or, select a boundary on the map to open the pop-up. Then select the pop-up.
- Before an EFR can be shared, it must be certified in order to verify that it is correct.

Step 2 — Certify the EFR



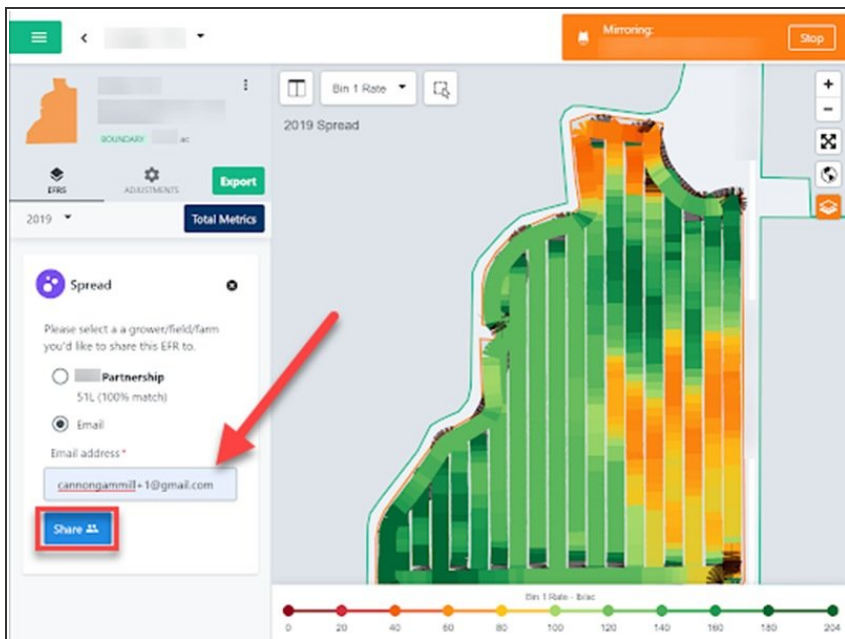
- Use the Certify EFR guide to help with this step. [Quick Calculate](#)
- Review the data to confirm it is correct, then certify the EFR

Step 3 — Share the EFR with Farmobile account



- On the same ellipsis button, there will now be an option to share the EFR.
- When clicking on the share button, the name of users with common field boundaries will populate.
- Select who the EFR is to be shared with
 - In order to share an EFR, both Farmobile DataEngineSM accounts must contain the same boundary to tie the shared EFR to. At this time, users are only given the option to share an EFR if a >95% boundary match exists
- Verify that sharing the EFR was successful

Step 4 — Share EFR with Non-Farmobile Account



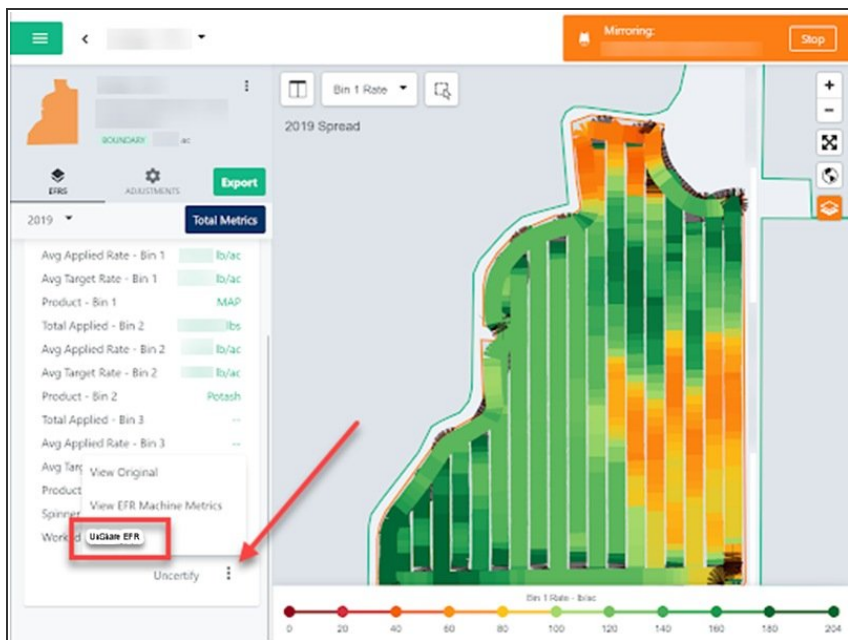
- If the EFR is to be shared with a user that does not have a Farmobile account, select the circle and enter an email
- An email will be sent to the user notifying that there has been an EFR shared

Step 5 — The Shared EFR



- The sharee will now be able to view the EFR
 - It will be noted that the EFR is shared and comes from an external source.
 - The EFR will also be a "Read Only" and will not be able to be edited by the user.

Step 6 — Unshare Your EFR



- The sharer will be able to unshare the EFR at anytime using a similar process.
 - Find the EFR that is shared and click the ellipses button.
 - Instead of a "Share EFR" button, there will be an "Unshare EFR" button
- Unshare the EFR
- Verify that the EFR is no longer shared by viewing the bottom left corner
 - There will no longer be an icon that notes the EFR is shared