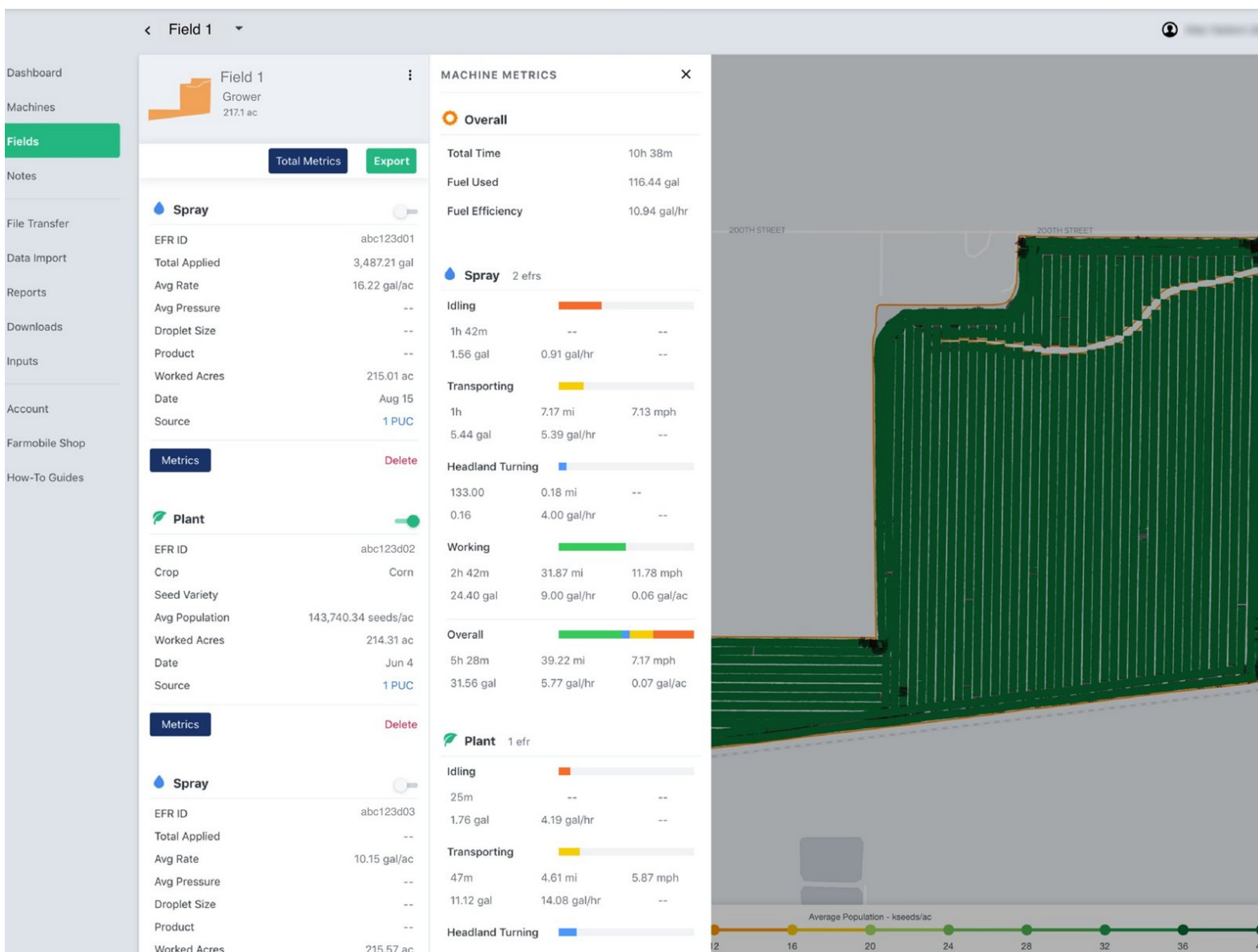




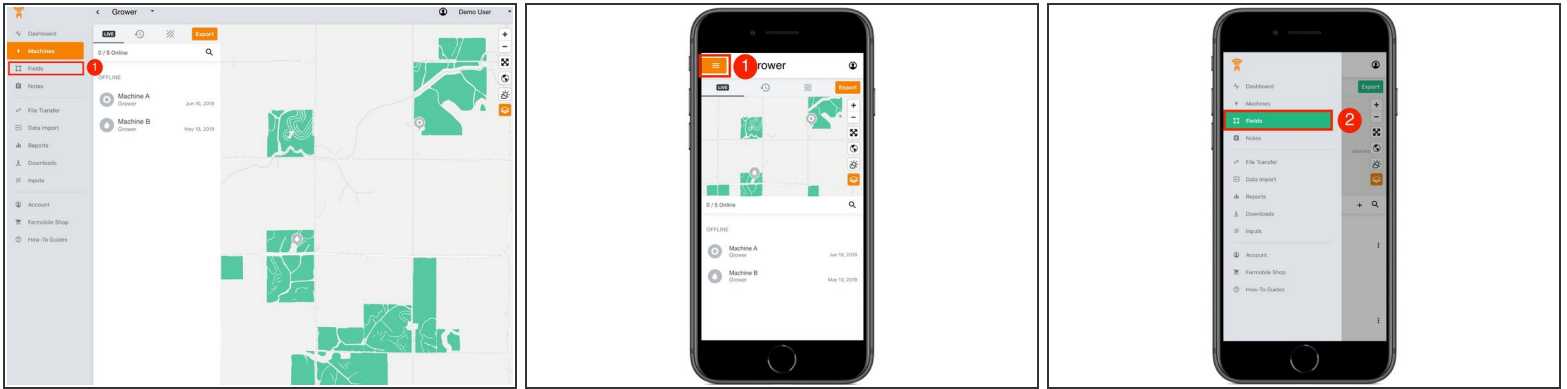
View Total EFR Machine Metrics

View the overall and total machine metrics for all the EFRs within a field.

Written By: Support

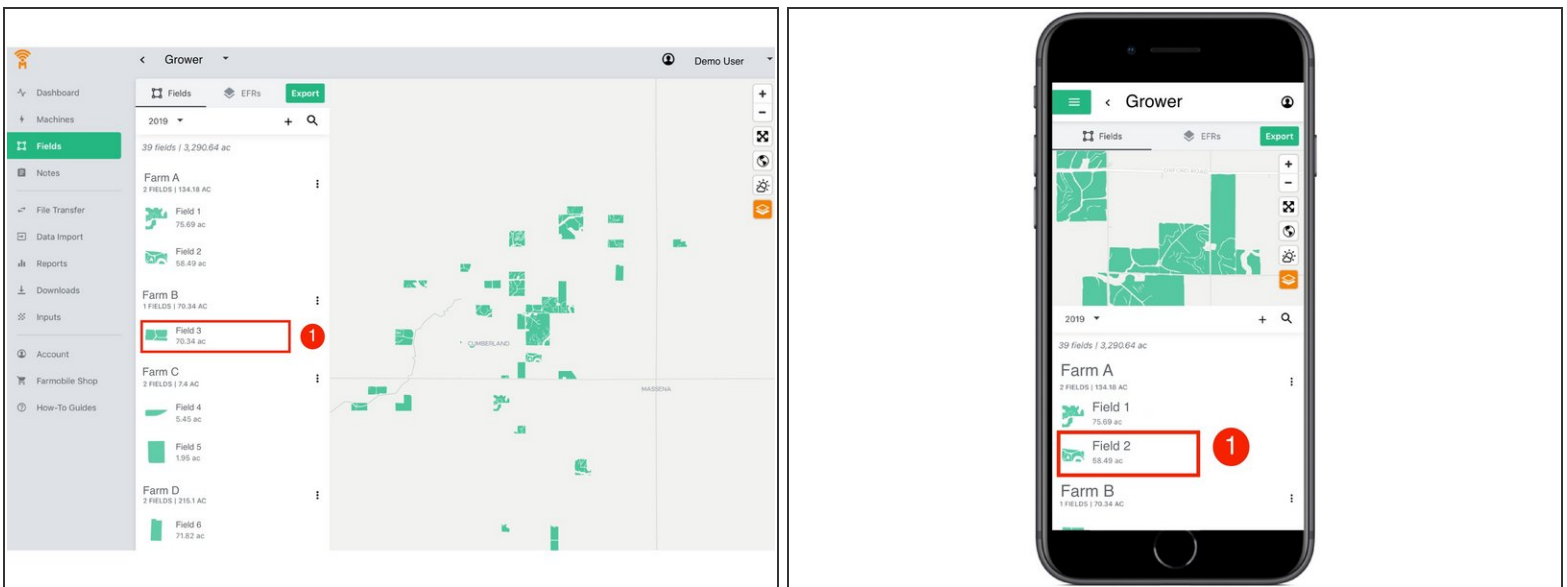


Step 1 — Navigate to Fields



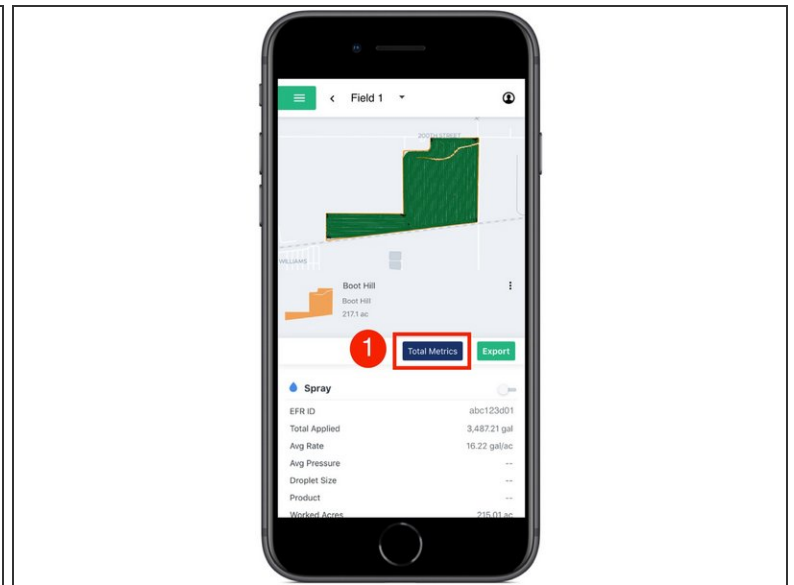
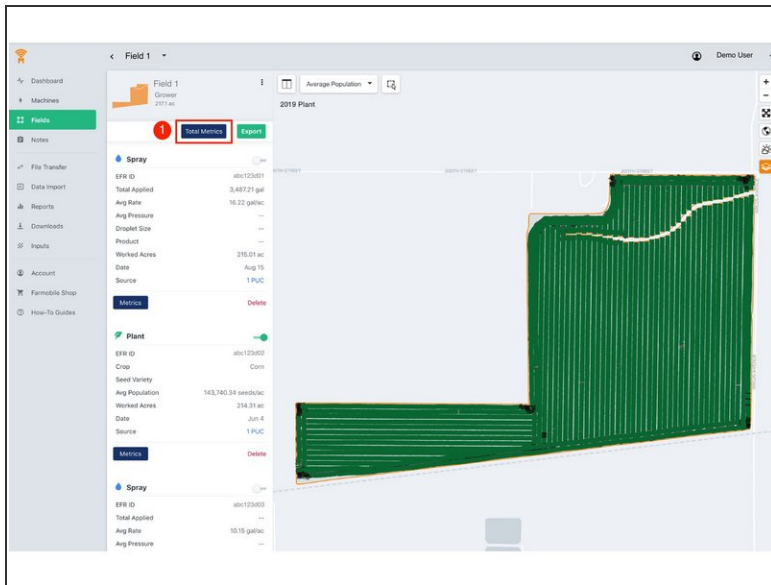
- 1. Select 'Fields' in the Farmobile DataEngineSM platform menu to navigate to your fields.

Step 2 — Select a Field



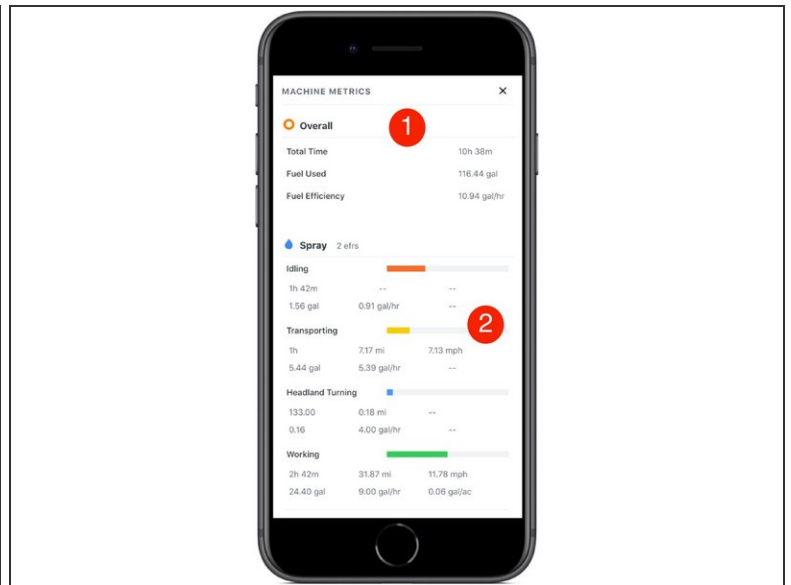
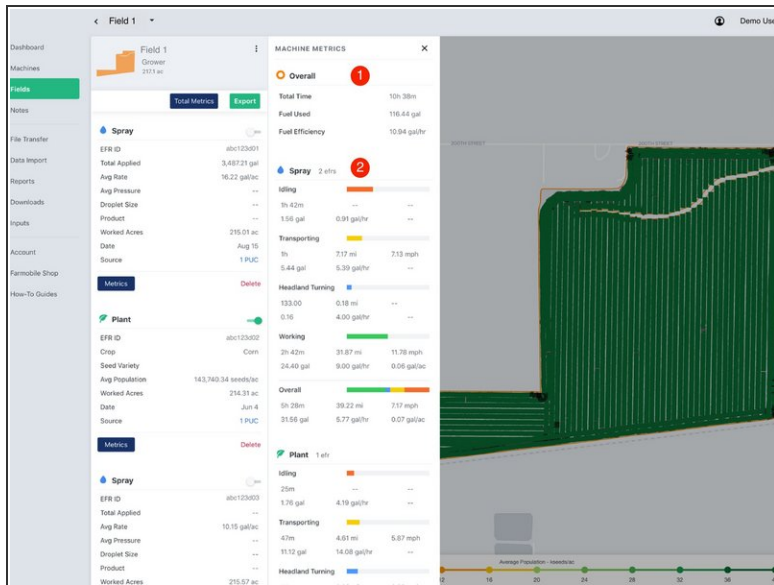
- Select a field to view EFRs and the total overall machine metrics.

Step 3 — Select Total Metrics



- Select 'Total Metrics' to open and view the overall EFR machine metrics for the selected field.
- ❗ The 'Total Metrics' button is only available when a field has more than 1 EFR in the same calendar year.

Step 4 — Review Overall EFR Machine Metrics



- Review the overall machine metrics aggregated from all EFRs and all activities.
 - Total Time, Total Fuel Used (gal), Fuel Efficiency (gal/hr)
- Review the aggregated EFR Machine Metrics by activity type. If more than one EFR exists for an activity, this report will combine their machine metrics for an overall view.
- i* EFR Machine Metrics: The machine utilization breakdown while operating within the field boundary by activity.
- i* Utilization Categories: Idling, Transporting, Headland Turning, Working, and Overall
- i* Category Metrics: Total Time, Total Distance, Avg Speed, Total Gallons, Gallons/Hr, and Gallons/Acre