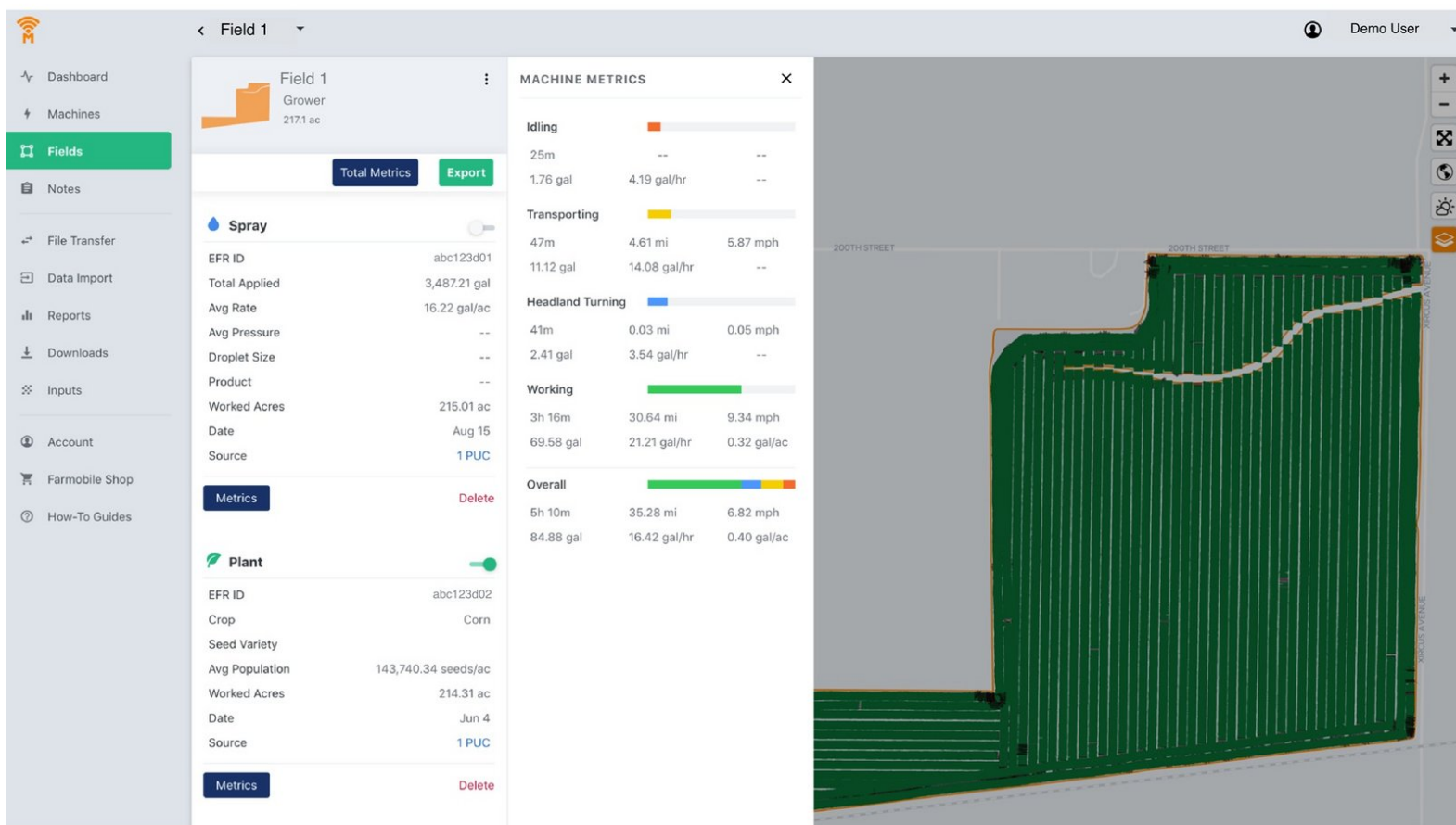




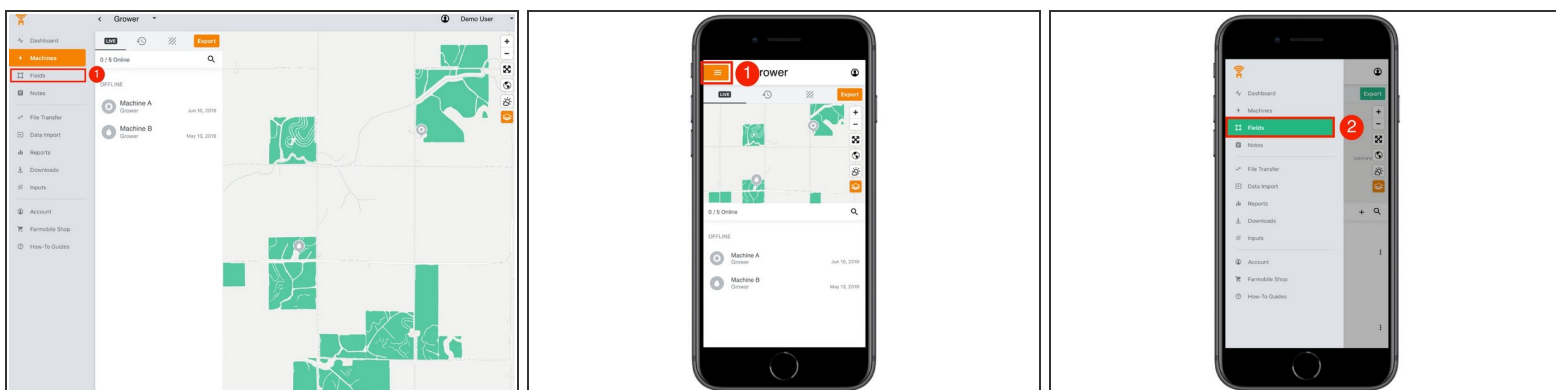
View EFR Machine Metrics

Review the aggregated machine metrics for each EFR to see how much time and fuel was used within the field.

Written By: Support

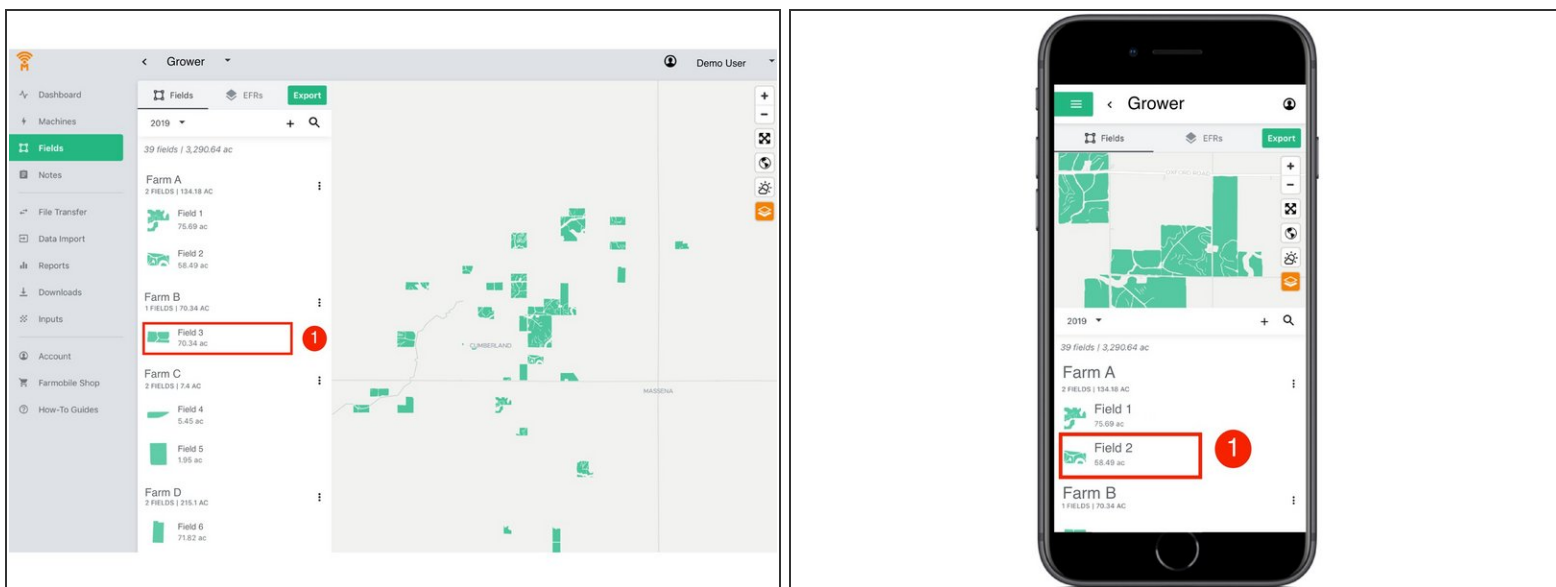


Step 1 — Navigate to Fields



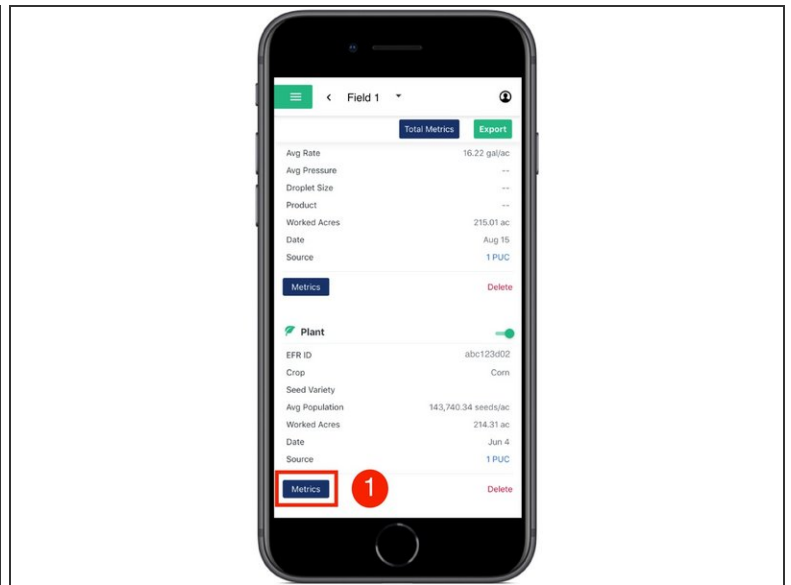
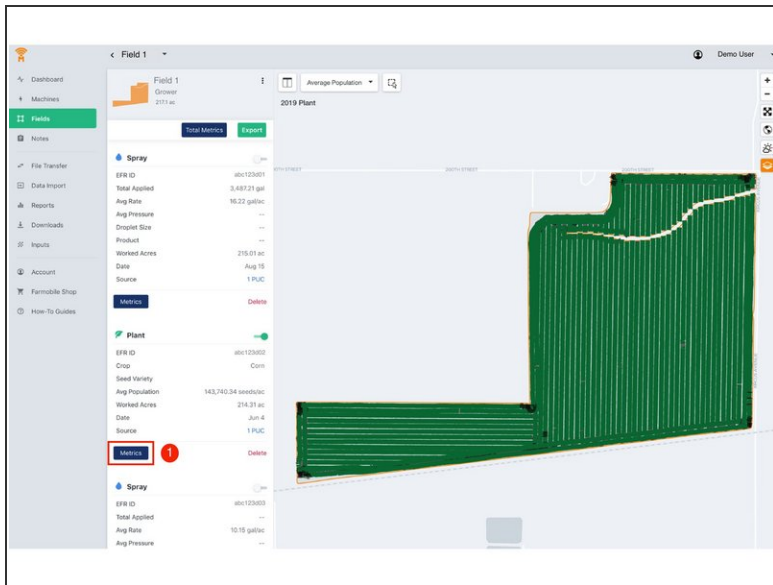
- Select 'Fields' in the Farmobile DataEngineSM platform menu to navigate to your fields.

Step 2 — Select a Field



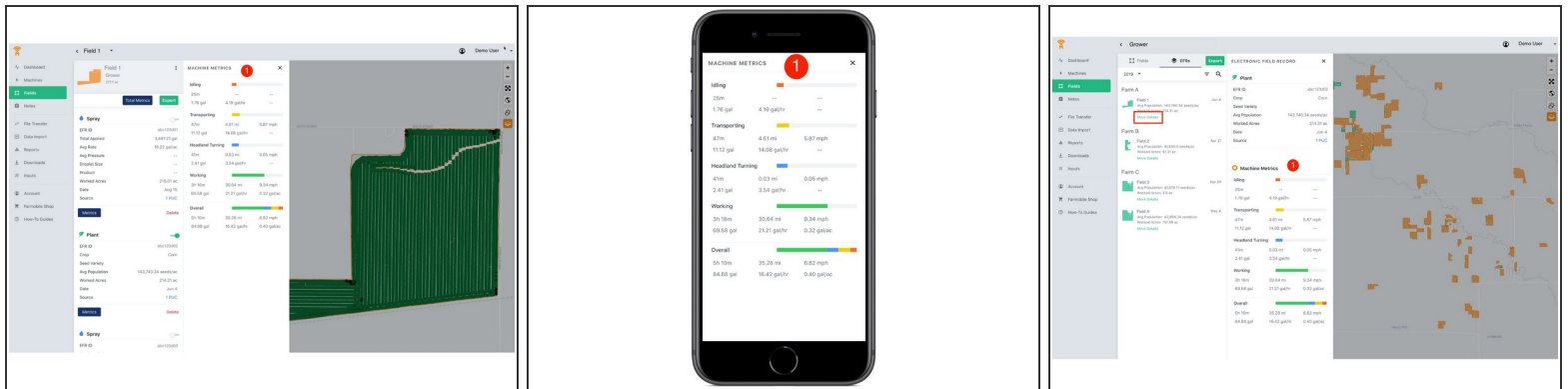
- Select a field to view EFRs and their machine metrics.

Step 3 — Select Metrics



- Within the EFR, select the 'Metrics' button to open and view the associated machine metrics.

Step 4 — Review EFR Machine Metrics



- Review the machine utilization metrics for the EFR.
- ❗ EFR Machine Metrics: The machine utilization breakdown while operating within the field boundary by activity.
- ❗ Utilization Categories: Idling, Transporting, Headland Turning, Working, and Overall
- ❗ Category Metrics: Total Time, Total Distance, Avg Speed, Total Gallons, Gallons/Hr, and Gallons/Acre
- ❗ Note: EFR Machine Metrics are also available within the EFR Views.