



EFR Views - View & Certify EFR Data

Within EFR Views, quickly view and certify your EFR data.

Written By: Support

Machines

Fields

Notes

File Transfer

Data Import

Reports

Downloads

Inputs

Account

Farmobile Shop

How-To Guides

Fields

2019

All / Plant

Planting EFRs

2,794.91 worked ac

34

Corn

22 EFRs | 1,518.18 ac

Missing Seed Variety

22 EFRs

Soybeans

12 EFRs | 1,276.72 ac

Missing Seed Variety

3 EFRs

GH2478L Brand

3 EFRs

GH2847L Brand

3 EFRs

GH3216L Brand

7 EFRs

GH3455L Brand

2 EFRs

GH3980L Brand

4 EFRs

Farm A

Field 1

Apr 25 - Apr 26

Avg Applied Rate - Bin 1: 215.27 lb/ac

Worked Acres: 72.2 ac

More Details

Field 2

Apr 25

Avg Population: 125,651.12 seeds/ac

Worked Acres: 57.76 ac

More Details

Field 3

Apr 25

Avg Population: 124,779.89 seeds/ac

Worked Acres: 57.76 ac

ELECTRONIC FIELD RECORD

Plant

EFR ID

X123y34ks

Crop

Soybeans

Seed Variety

GH3216L Brand

Avg Population

125,651.12 seeds/ac

Worked Acres

57.76 ac

Date

Apr 25

Activity

2 PUCs

Certify

Review your activity and correct any incorrect data. Certified data is eligible for revenue opportunities in the Farmobile Data Store.

Crop Type*

Soybeans

Date Range*

Apr 25, 2019

Apr 25, 2019

Avg Population*

125651.12

seeds/ac

Worked Acres

57.76 ac

Seed Variety*

GH3216L Brand

Brand Name

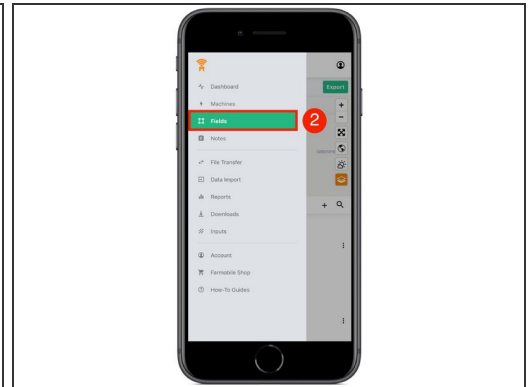
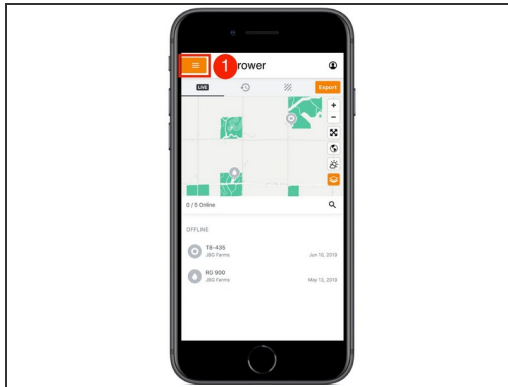
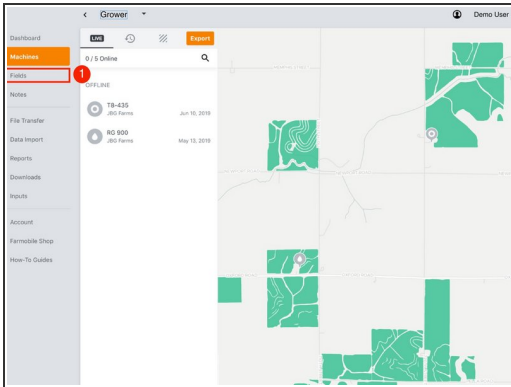
Choose a brand to add more seed varieties

Select Brand...

Certify

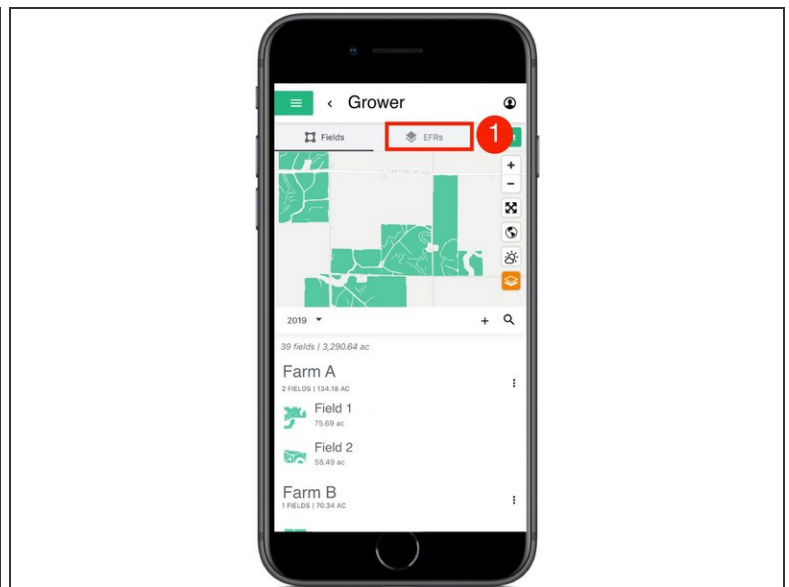
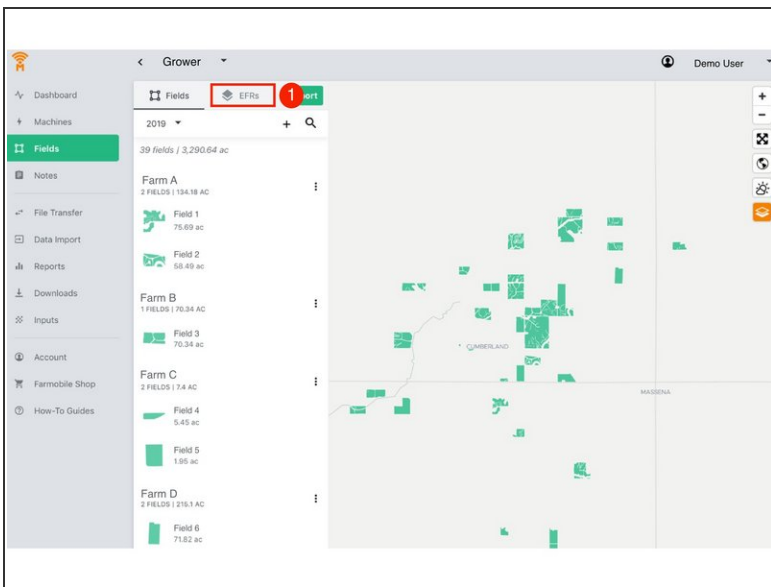
Cancel

Step 1 — Navigate to Fields



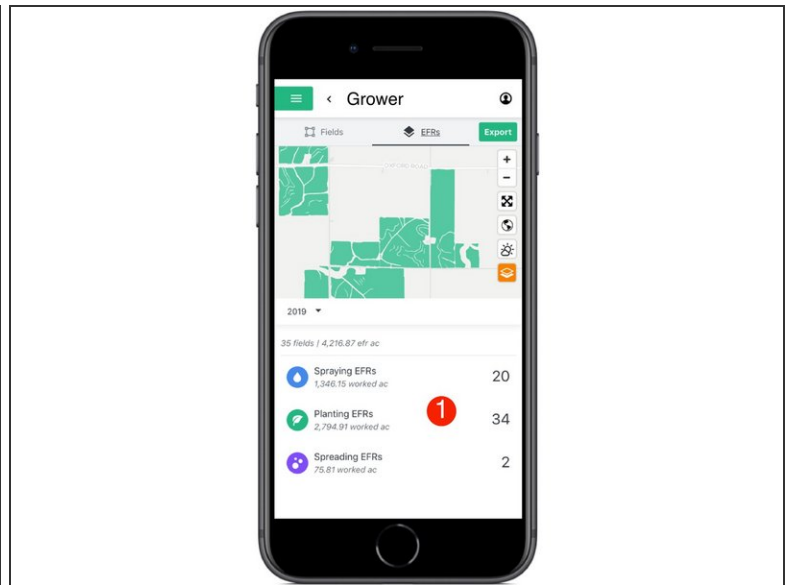
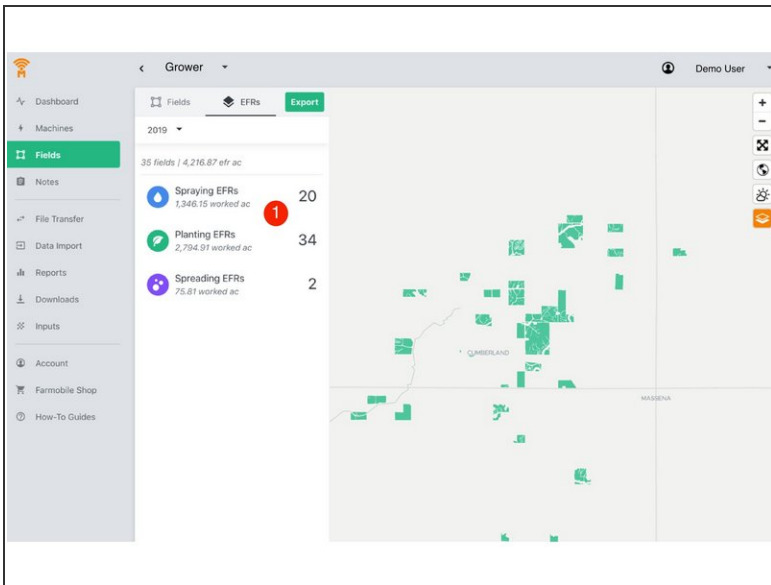
- Select 'Fields' in the Farmobile DataEngineSM platform menu to navigate to your fields.

Step 2 — Select the EFRs Tab



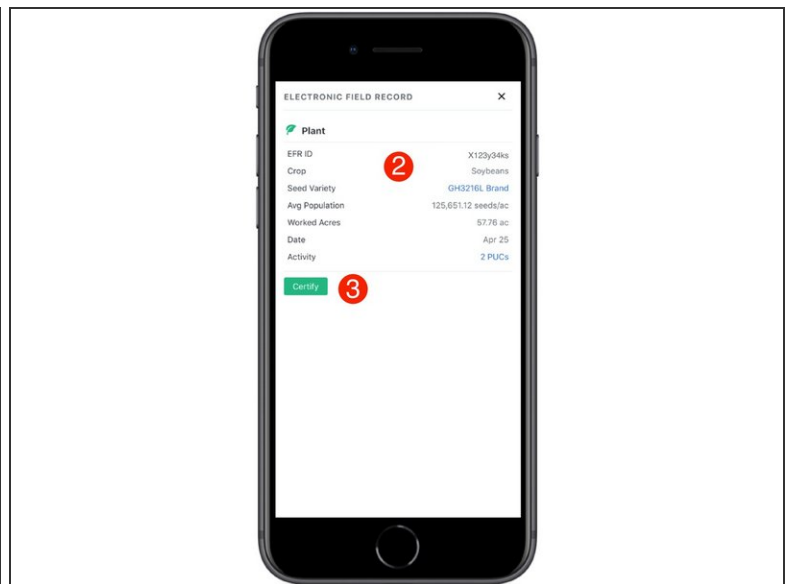
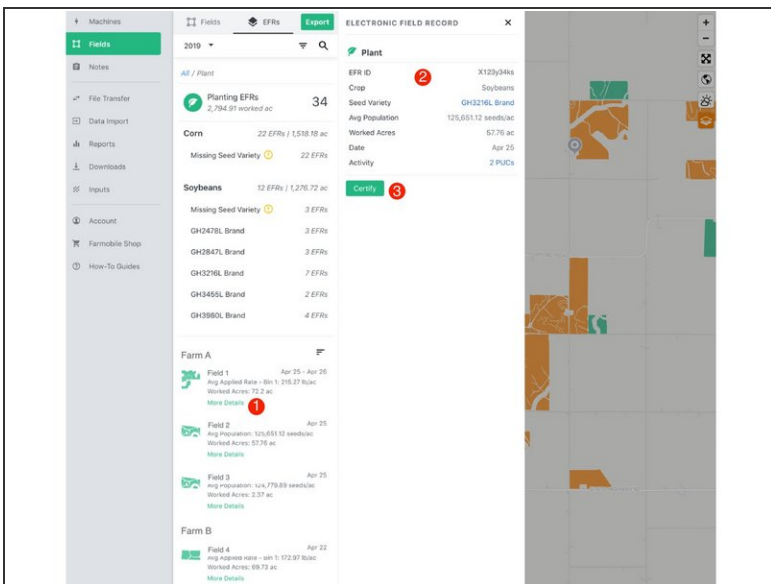
- Select the 'EFRs' tab to view and interact with you EFR data.
- ❗ When the 'Fields' tab is selected the left menu is populated with the list of your Farms and Fields.

Step 3 — Select an Activity



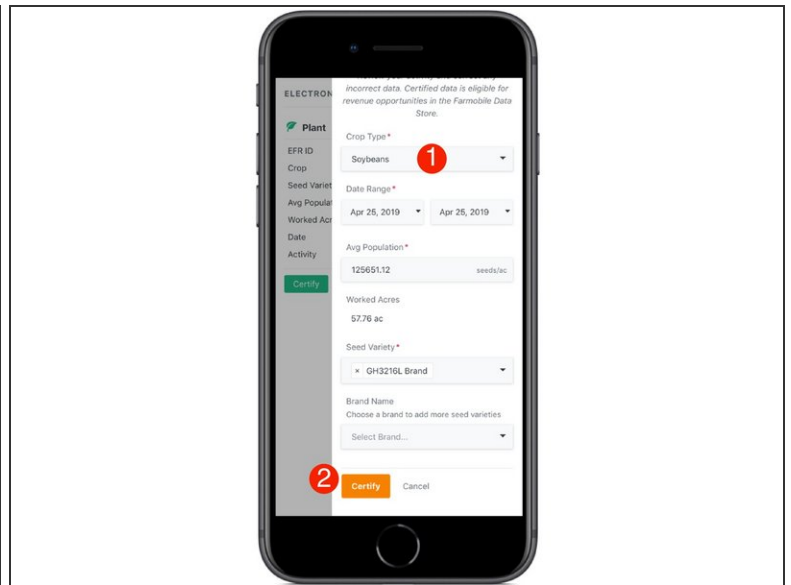
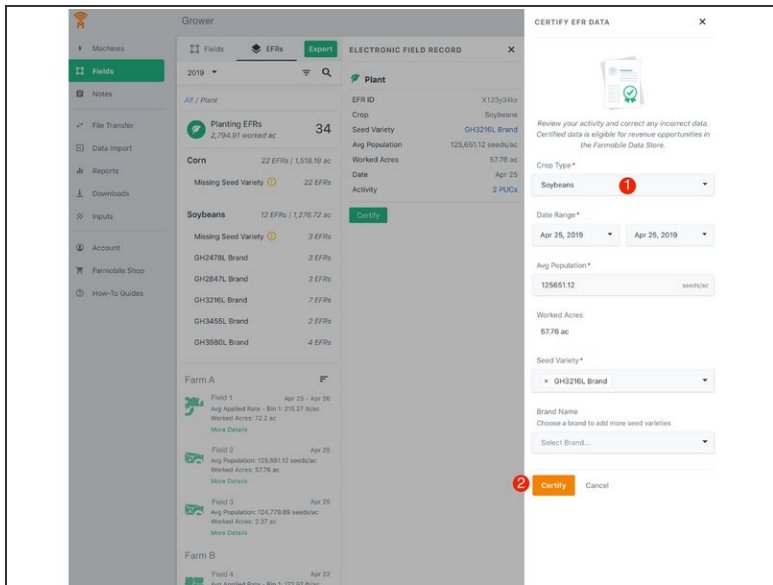
- Select an activity tile to view the list of EFRs for that activity.

Step 4 — View EFR Details



- Select 'More Details' within an EFR to open the entire EFR for review.
- Review all of the EFR attributes.
- Select the 'Certify' button to certify the EFR.

Step 5 — Certify the EFR



- Enter/update the required EFR attributes.
- Select the 'Certify' button to complete the EFR certification.