



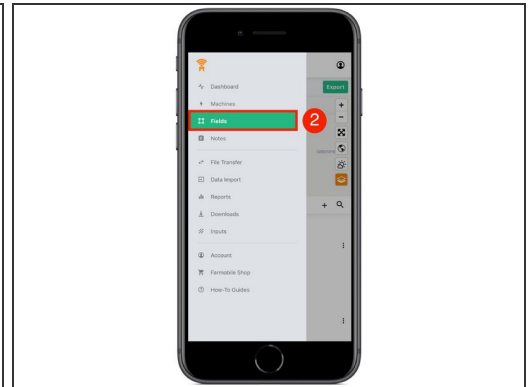
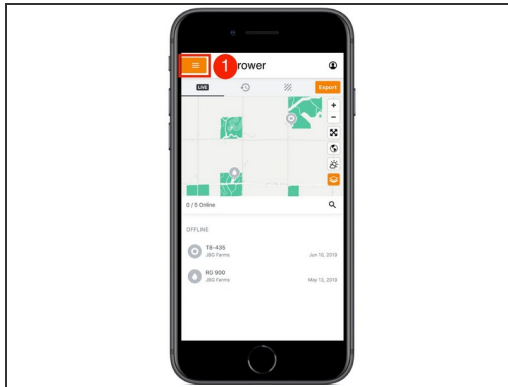
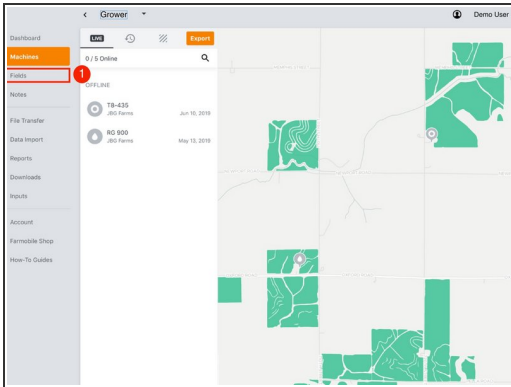
Filter by Certification Status

Filter your EFRs by the Certification status to quickly locate any EFRs that are not yet certified.

Written By: Support

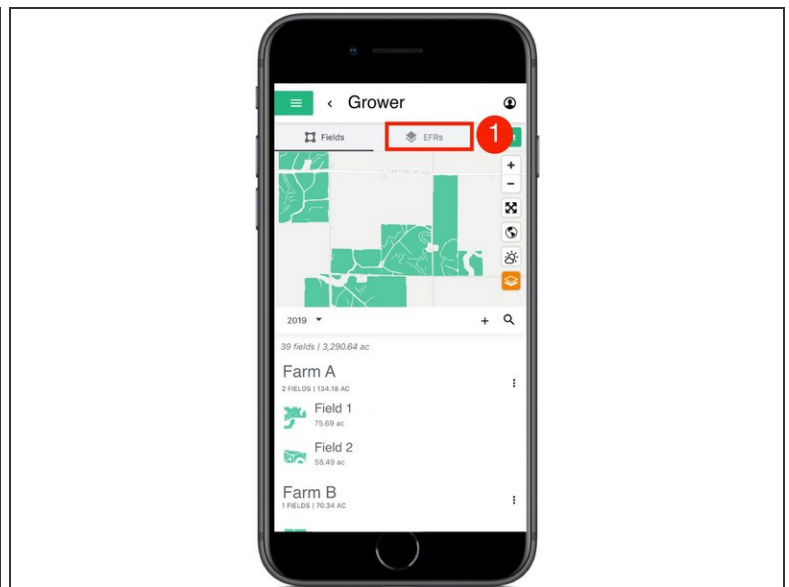
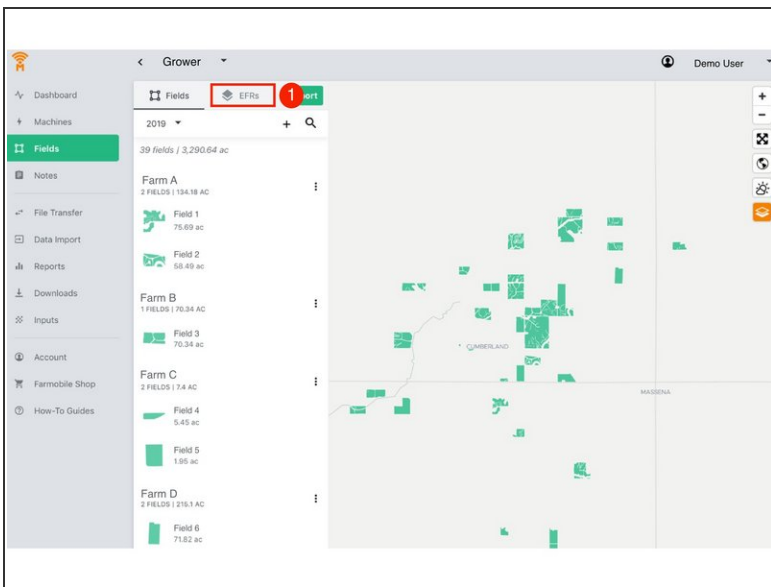
The screenshot displays the Farmobile mobile application interface. On the left is a grey sidebar with navigation options: Dashboard, Machines, Fields (highlighted in green), Notes, File Transfer, Data Import, Reports, Downloads, Inputs, Account, Farmobile Shop, and How-To Guides. The main content area is divided into two sections. The top section, titled "EFRs", shows a filter menu for "2019" with a search icon. The filter menu is open, showing "CERTIFICATION" with three options: "All" (selected, green circle), "Certified" (white circle), and "Uncertified" (white circle). Below the filter menu, there are two crop categories: "Corn" and "Soybeans". Under "Corn", there is a "Missing Seed Variety" warning icon and "22 EFRs". Under "Soybeans", there is a "Missing Seed Variety" warning icon and "12 EFRs | 1,276.72 ac". Below these are several "GH" brand names with their respective EFR counts. The bottom section, titled "Farm A", lists three fields with their dates, average applied rates, and worked acres, each with a "More Details" link. On the right side of the interface is a map showing the geographical distribution of the fields, with orange and green polygons representing the EFRs. The map includes labels for "OXFORD ROAD", "STATE HIGHWAY 92", "CUMBERLAND", and "MASSENA".

Step 1 — Navigate to Fields



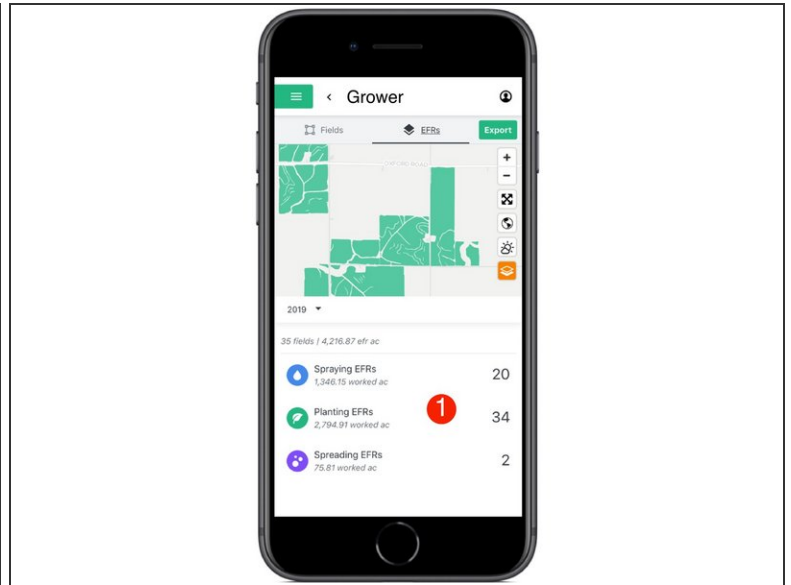
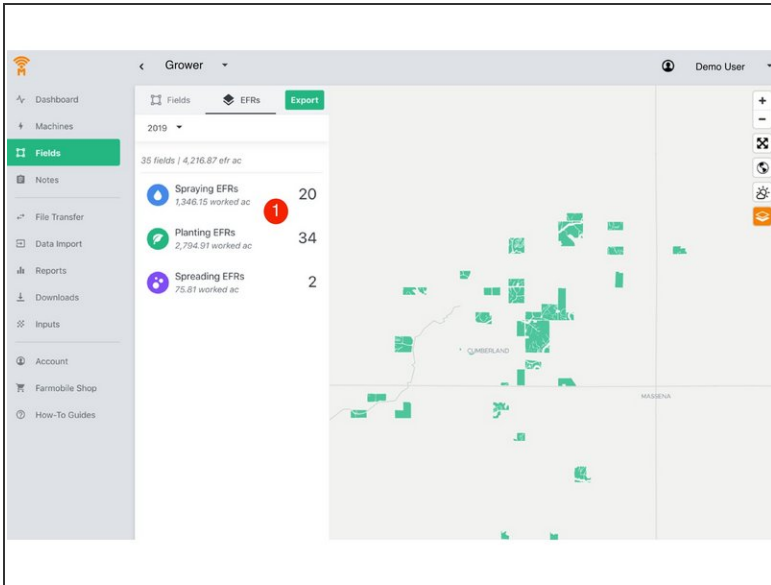
- Select 'Fields' in the Farmobile DataEngineSM platform menu to navigate to your fields.

Step 2 — Select the EFRs Tab



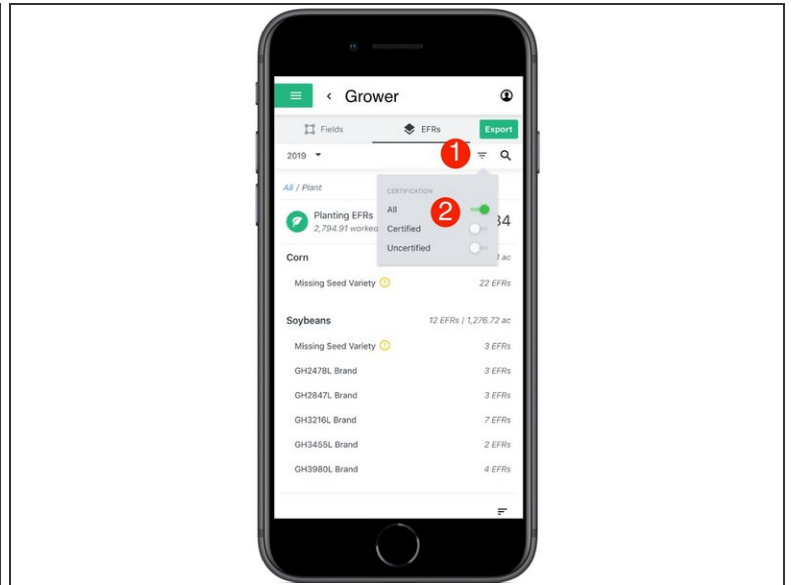
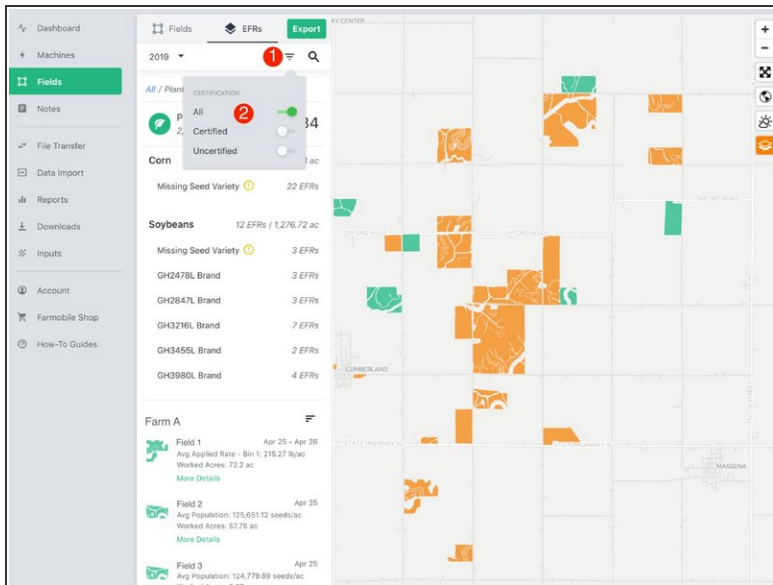
- Select the 'EFRs' tab to view and interact with you EFR data.
- ❗ When the 'Fields' tab is selected the left menu is populated with the list of your farms and fields.

Step 3 — Select an Activity



- Select an Activity Tile to view the list of EFRs for that activity and enable the certification filter.

Step 4 — Filter by Certification Status



- 1. Select the filter menu button.
- 2. Toggle on the desired certification status to filter your EFRs
 - All: View both certified and uncertified EFRs
 - Certified: View only certified EFRs
 - Uncertified: View only uncertified EFRs