



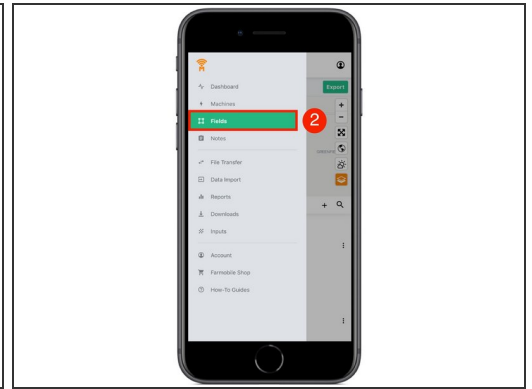
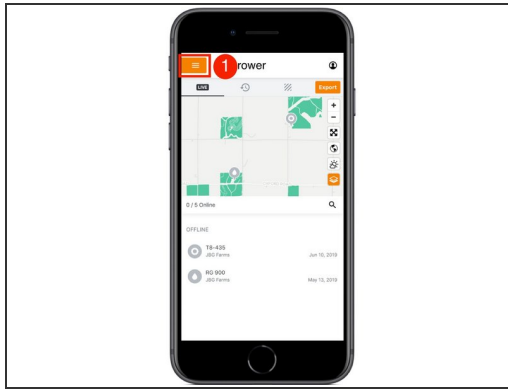
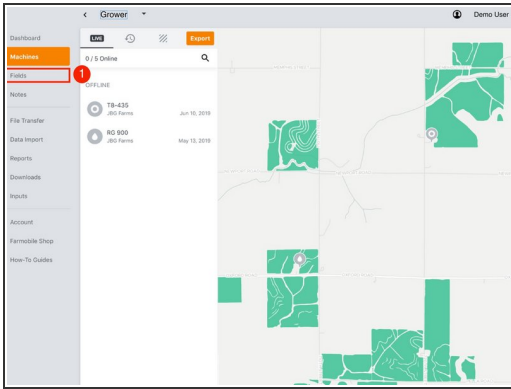
# Filter by Date Range

Filter your EFRs by a specific date range to find and view your EFR data quickly.

Written By: Support

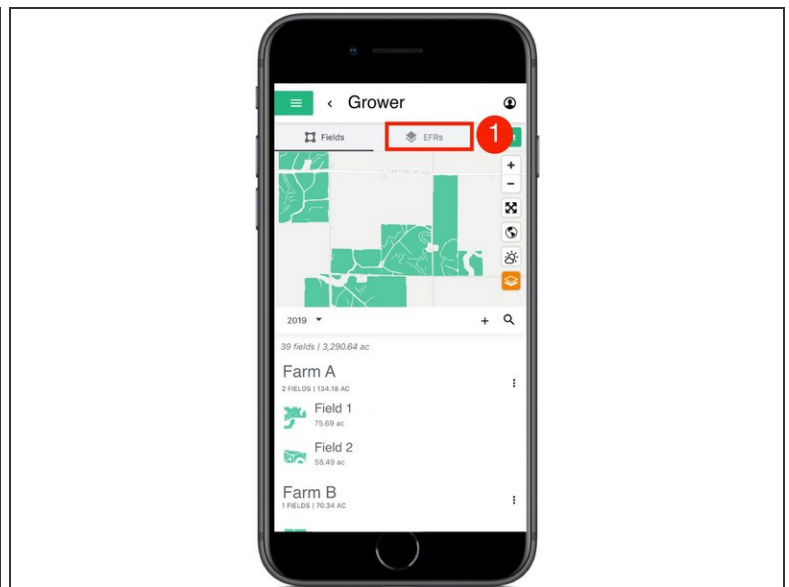
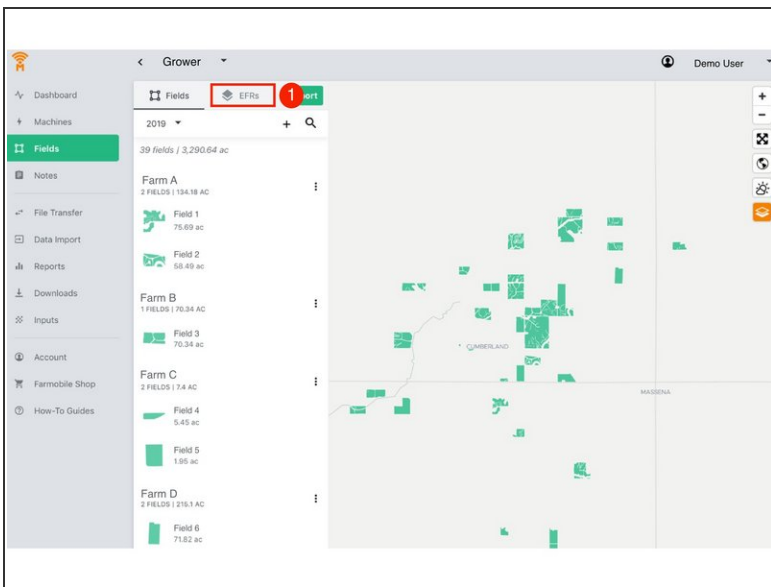
The screenshot displays the Farmobile app interface. On the left is a sidebar menu with options: Dashboard, Machines, Fields (highlighted in green), Notes, File Transfer, Data Import, Reports, Downloads, Inputs, Account, Farmobile Shop, and How-To Guides. The main header shows a 'Grower' dropdown and a 'Demo User' profile. Below the header, there are tabs for 'Fields' and 'EFRs', with an 'Export' button. A date filter dropdown is set to '2019'. A list of filters is shown, including 'Previous Day' (34), 'Previous Week' (1,518.18 ac), 'Previous Month' (22 EFRs), and a list of years from 2018 down to 2013. Below this, specific brands are listed: 'GH3455L Brand' (2 EFRs) and 'GH3980L Brand' (4 EFRs). The bottom section, titled 'Farm A', shows details for 'Field 1' (Apr 25 - Apr 26) and 'Field 2' (Apr 25). The main area is a map showing various fields outlined in orange and green, with labels for 'OXFORD ROAD', 'STATE HIGHWAY 92', 'CUMBERLAND', and 'MASSENA'.

## Step 1 — Navigate to Fields



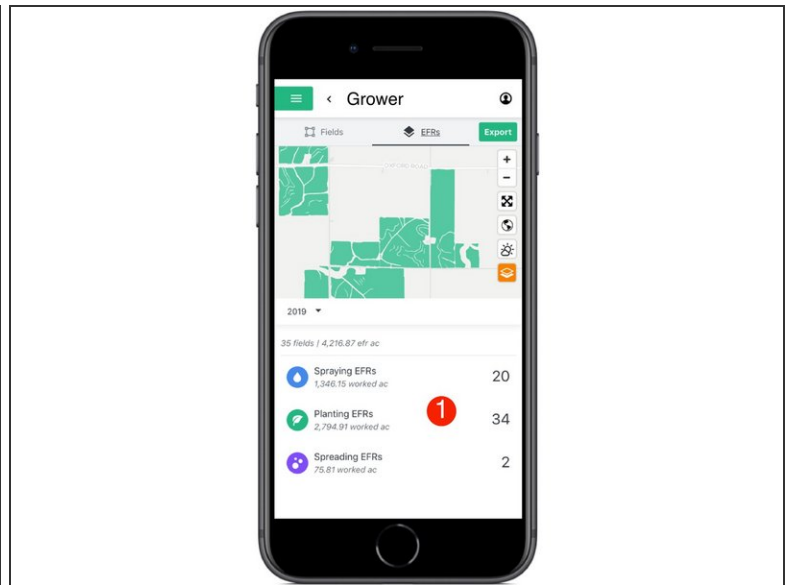
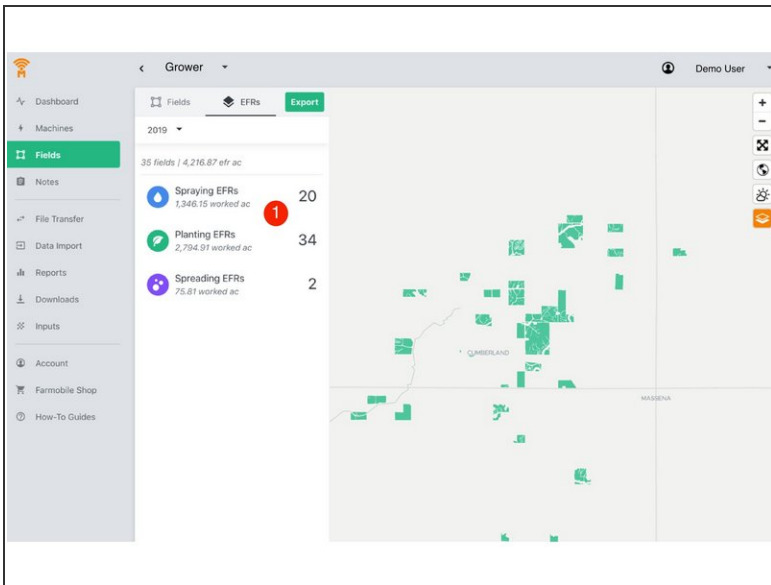
- Select 'Fields' in the Farmobile DataEngine<sup>SM</sup> platform menu to navigate to your fields.

## Step 2 — Select 'EFRs'



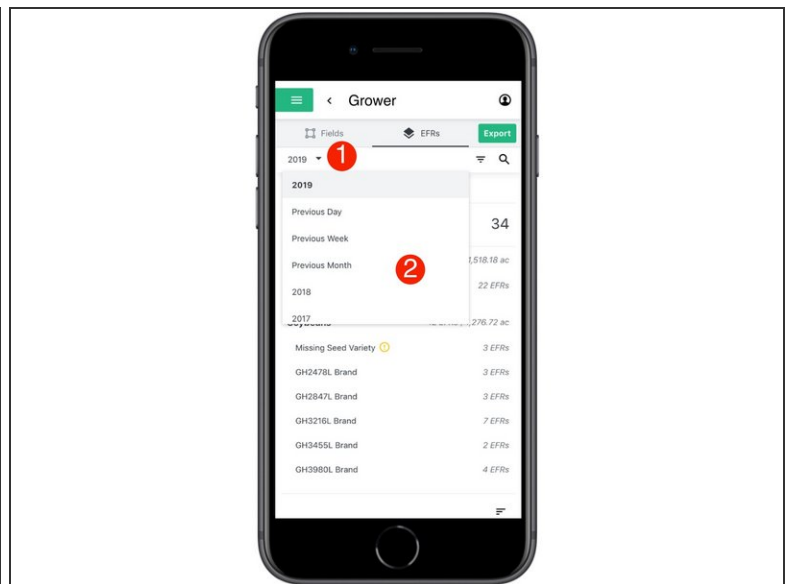
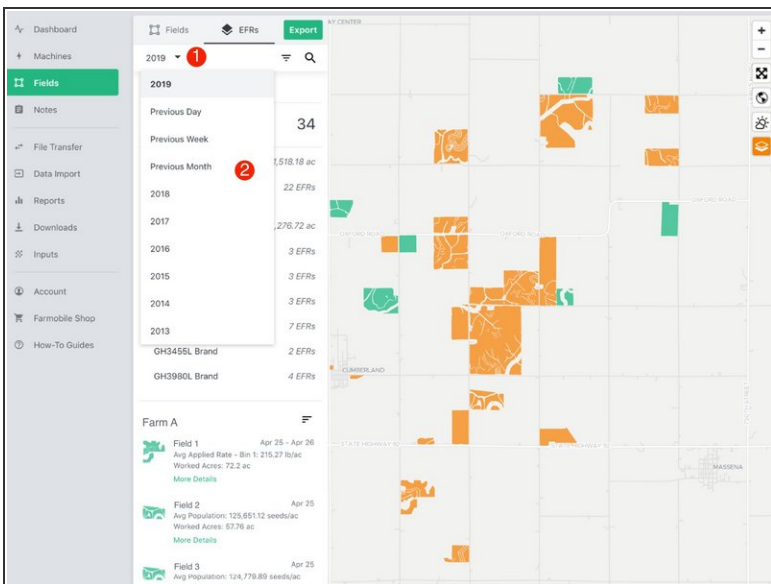
- Select the 'EFRs' tab to view and interact with you EFR data.
- ❗ When the 'Fields' tab is selected the left menu is populated with the list of your Farms and Fields.

## Step 3 — Select an Activity



- Select an Activity Tile to view the list of EFRs for that activity and enable the date range filter.

## Step 4 — Filter by Date



- Open the date range dropdown menu.
- Select the required time frame to filter your list of EFRs by. Available options are: previous day, previous week, previous month, current year, and previous years.