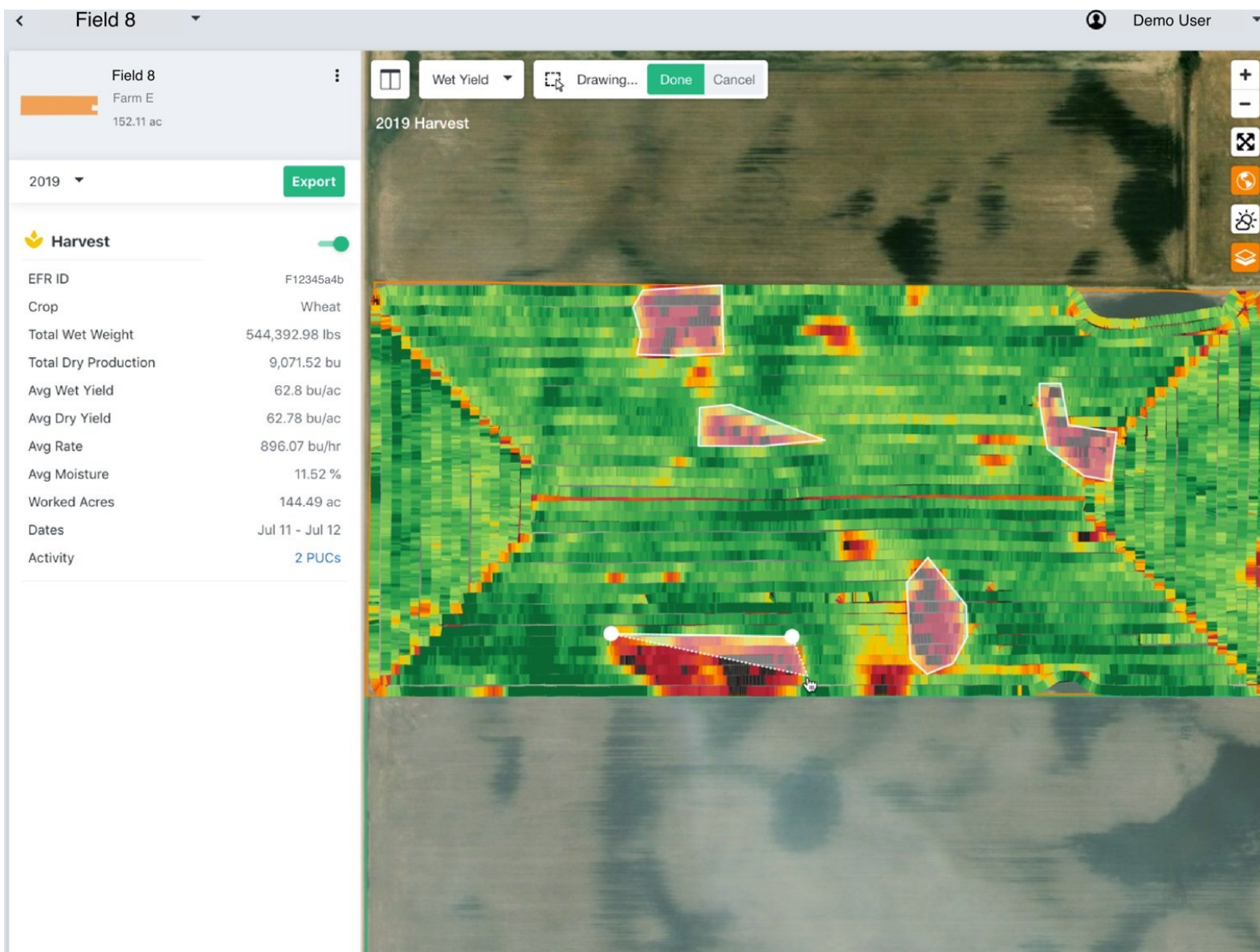




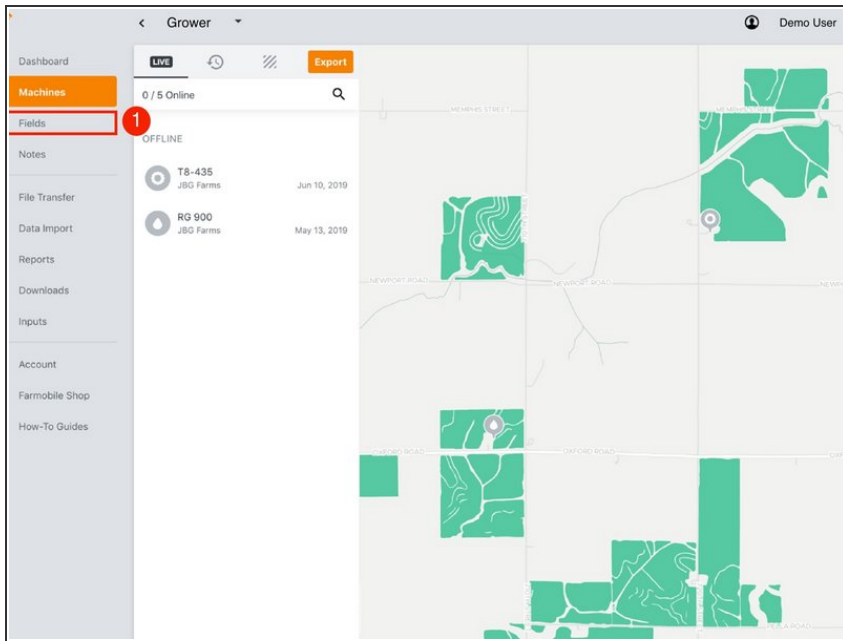
# EFR Zones

Create an EFR Zone to view the aggregate data for a specific area within your EFR Heatmaps.

Written By: Support

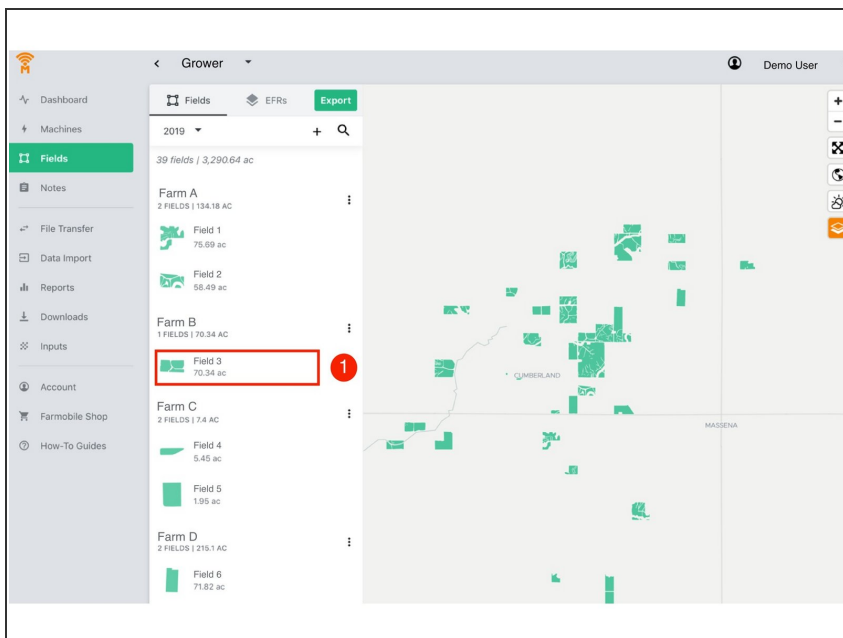


## Step 1 — Navigate to Fields



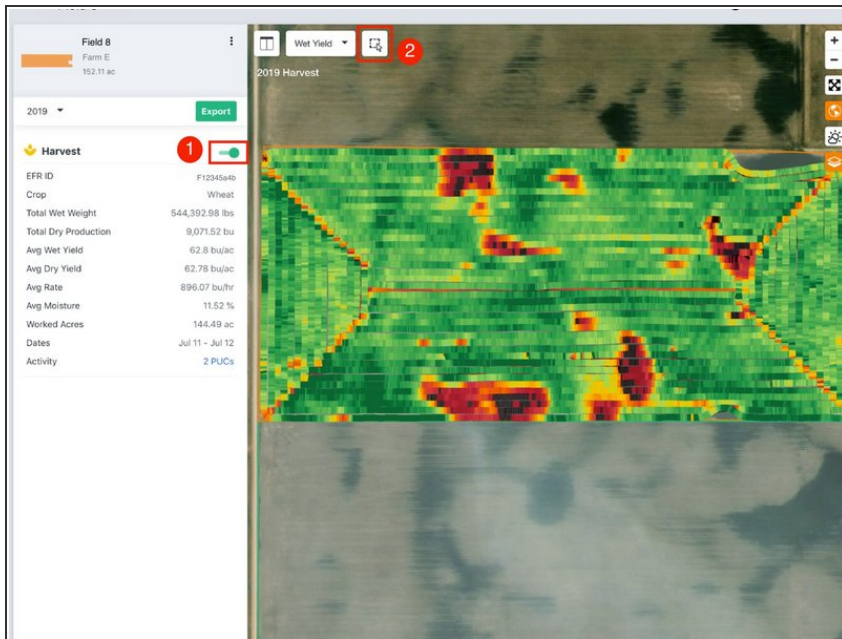
- Select 'Fields' in the Farmobile DataEngine<sup>SM</sup> platform menu to navigate to your fields.

## Step 2 — Select a Field



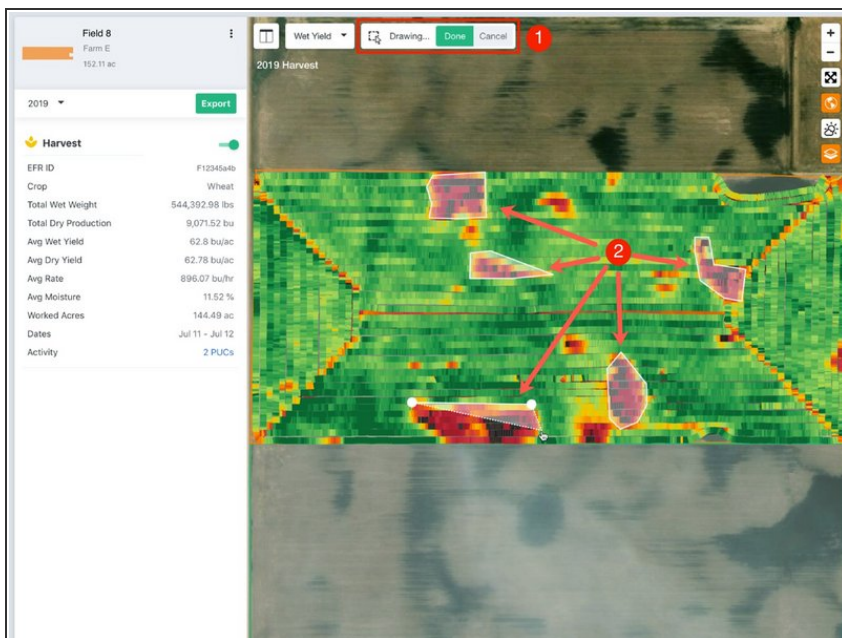
- Select a field to view the EFR Heatmap.

## Step 3 — Enable the Draw EFR Zone Tool



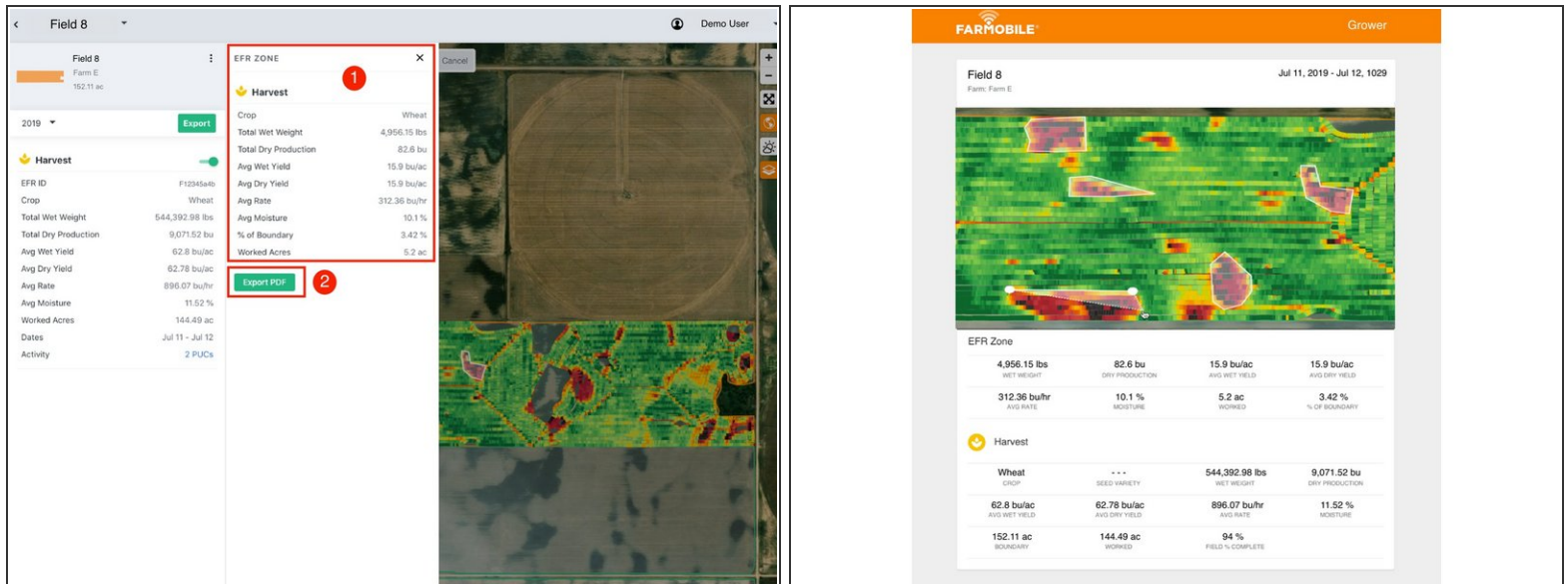
- Toggle on an EFR Heatmap.
- Select the Draw EFR Zone tool to enable the drawing tools.
- ❗ The Draw EFR Zone tool is not available when viewing maps in split view.

## Step 4 — Draw EFR Zones



- Draw EFR Zone controls are displayed when the tool is active.
- a) Select 'Done' to accept the zones that have been created to view the aggregate report.
- b) Select 'Cancel' to remove any zones and disable the tool.
- On the EFR Heatmap, draw one or more EFR Zones to target specific areas.
- ❗ The Draw EFR Zone tool is not available when viewing maps in split view.

## Step 5 — Review & Export EFR Zone Data



- The EFR Zone includes the agronomic information for the data within the EFR zones.
  - a) Compare the EFR Zone side by side with the EFR.
  - b) Close the EFR Zone window to remove the EFR Zones.
- Select 'Export PDF' to save the EFR zone as a PDF.
  - a) The PDF includes the EFR Zone Heatmap, EFR Zone Data, and all of the original EFR Data for comparison.