



Edit Seed Varieties

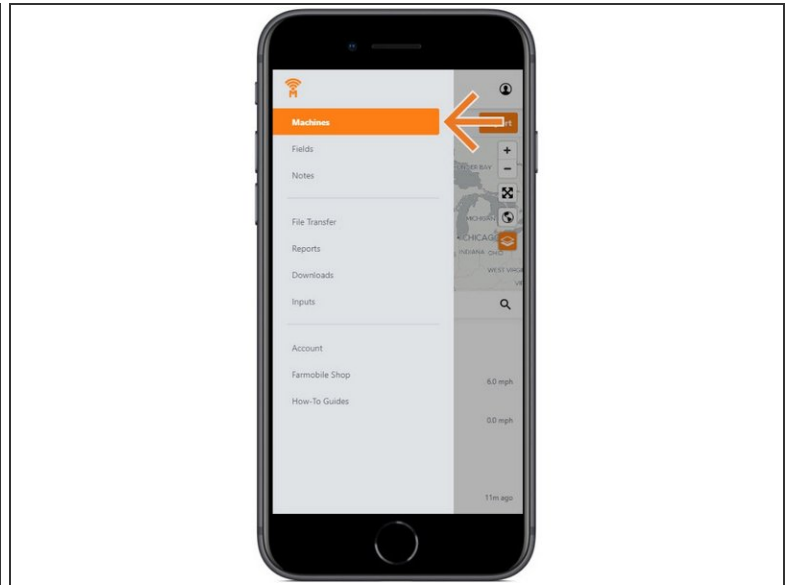
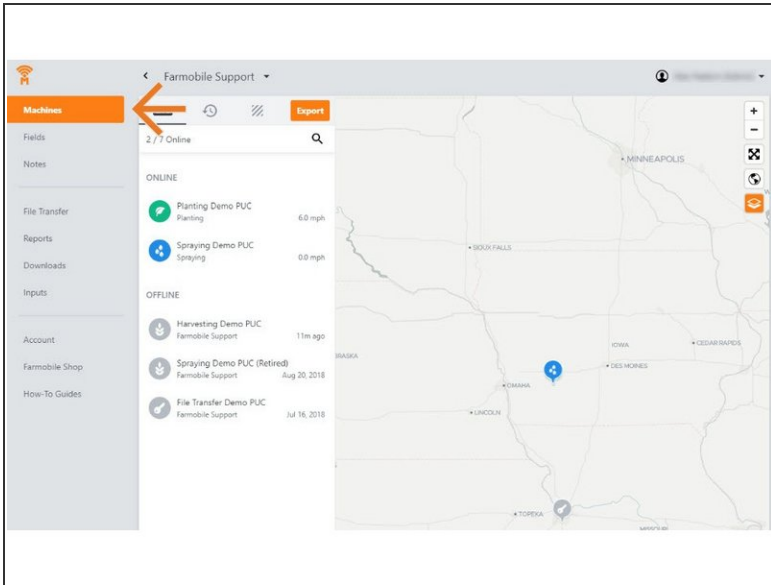
Written By: Support

The screenshot shows the Farmobile app interface. On the left is a sidebar menu with options: Machines, Fields, Notes, File Transfer, Data Import, Reports, Downloads, Inputs, Account, Farmobile Shop, and How-To Guides. The 'Machines' section is selected. The main area displays the 'Planting Demo PUC' machine settings. At the top, it shows the machine name, support contact, and MAC address. Below this are controls for 'LIVE' status, a clock icon, and an 'Export' button. A date selector shows 'Jan 29, 2019'. A timeline entry for '09:44 AM - Startup' is visible. The 'Planting' mode is selected. Settings include 'Row Spacing' (21 inches), 'PUC Centerline Offset' (Left/Right), 'Implement Offset' (Rear/Front), and 'Crop Type' (Soybeans). The 'Left Half' and 'Right Half' seed variety fields are highlighted with orange boxes and arrows. The 'Left Half' field contains '1234nx' and the 'Right Half' field contains '54321'. Below these fields are 'Save' and 'Cancel' buttons. The background is a satellite map of a field with a green planting path. A speedometer at the bottom shows 'Speed - mph' with a scale from 0 to 70.

INTRODUCTION

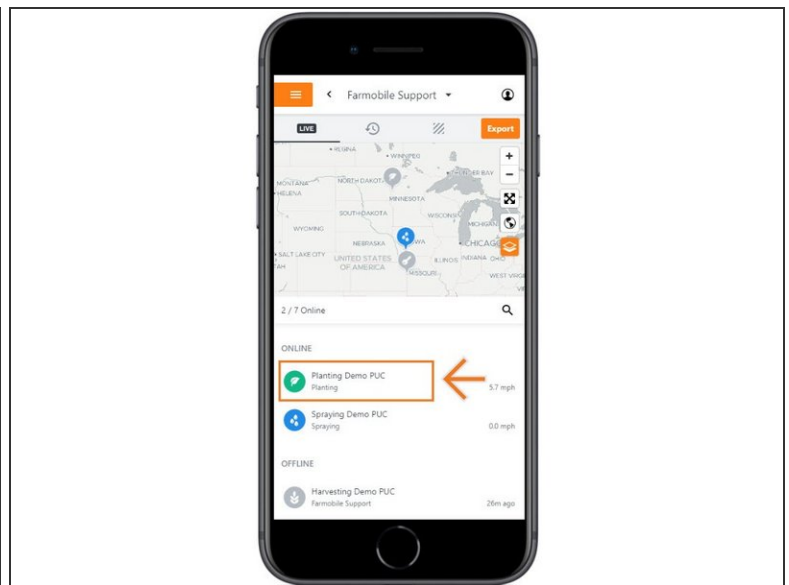
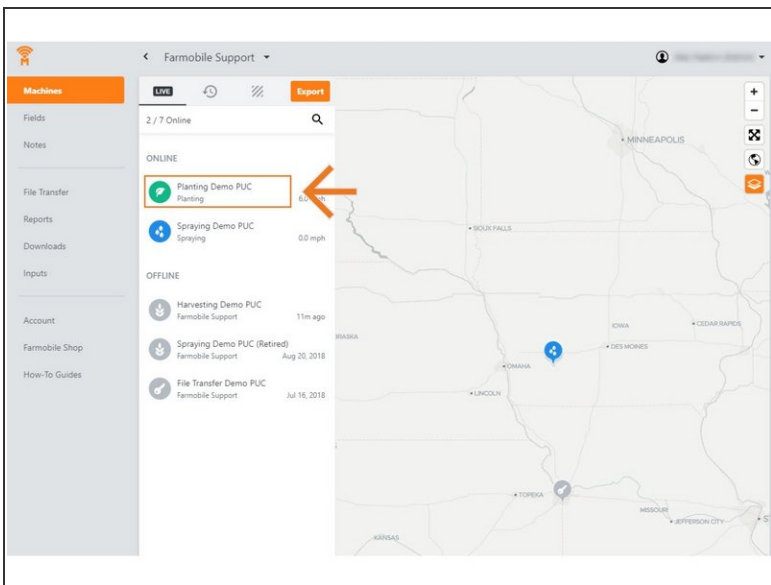
- History Machine Adjustments are only available at the Machine level.
- Seed Variety Adjustments are only available for planting activity.
- Seed Variety Adjustments carry forward to the end of the year or up to the next user-entered seed variety adjustment.
 - Per Farmobile PUC™ device.
- You must define a crop type to make a seed variety adjustment.
- You can add a seed variety for both the Left Half and Right Half.
- The list of available seed varieties to add is controlled by what Inputs (see Input guides) you have added to the system.
 - By Crop Type & Year.

Step 1 — Select Machines from the Farmobile DataEngineSM Platform



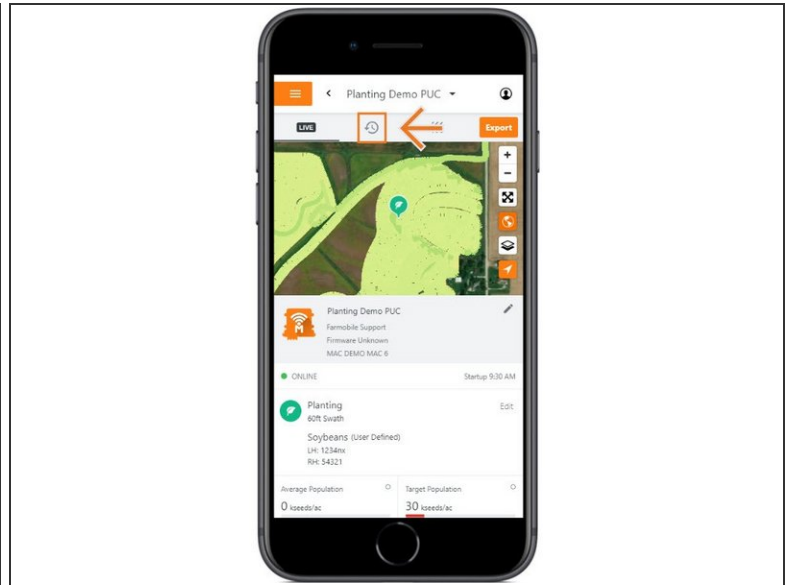
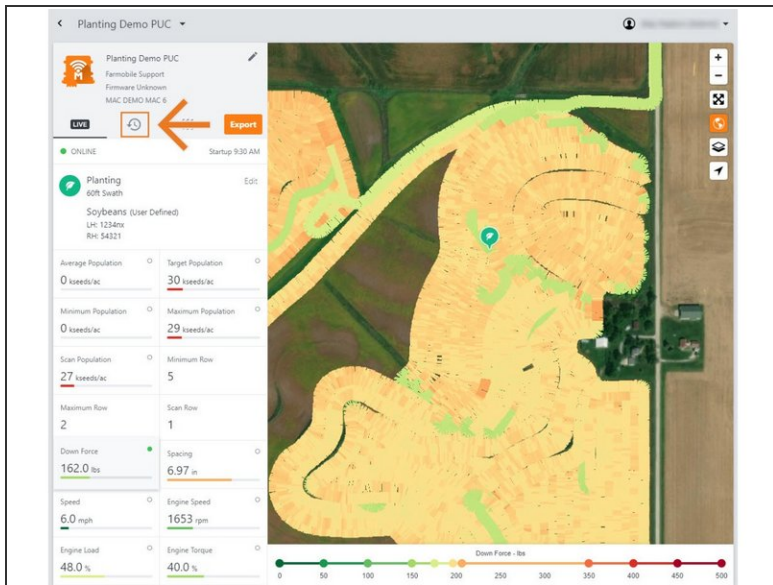
- Selecting Machines from the Farmobile DataEngine platform menu will open the Machines page with all of your Farmobile PUC device listed and displayed on the map.

Step 2 — Select a Machine



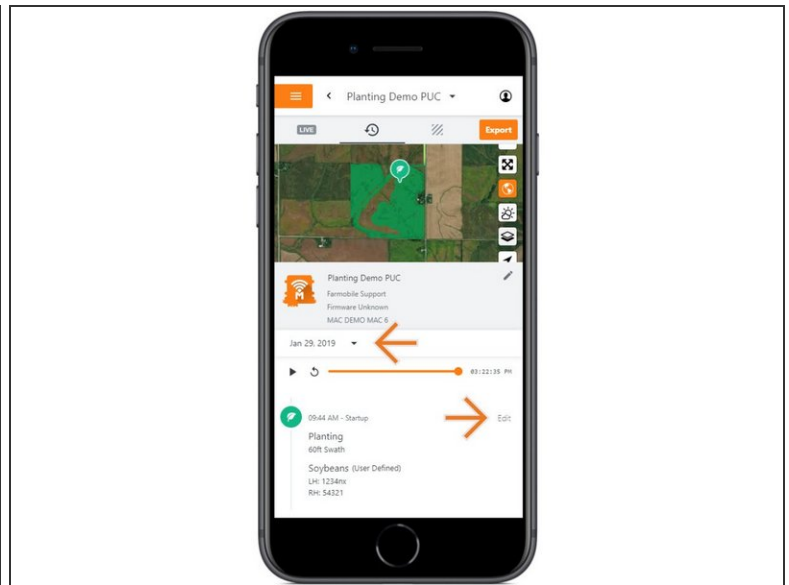
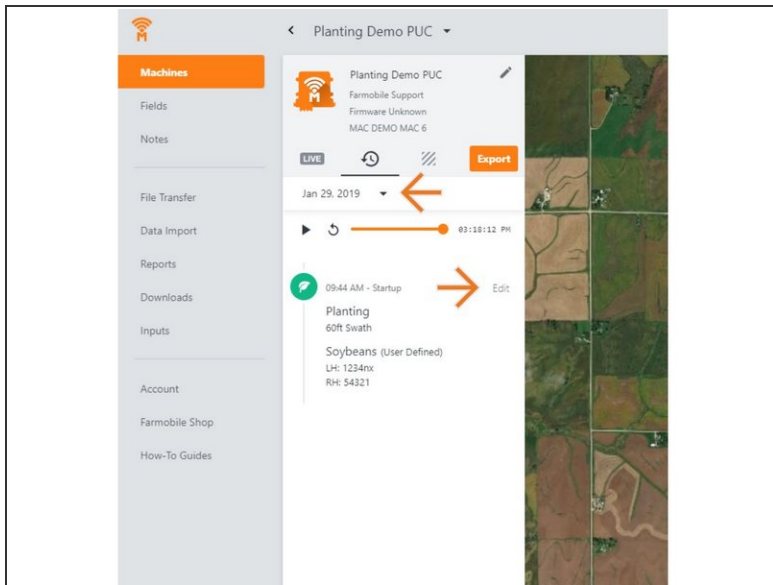
- Select a machine to open the machine details page.

Step 3 — Select History



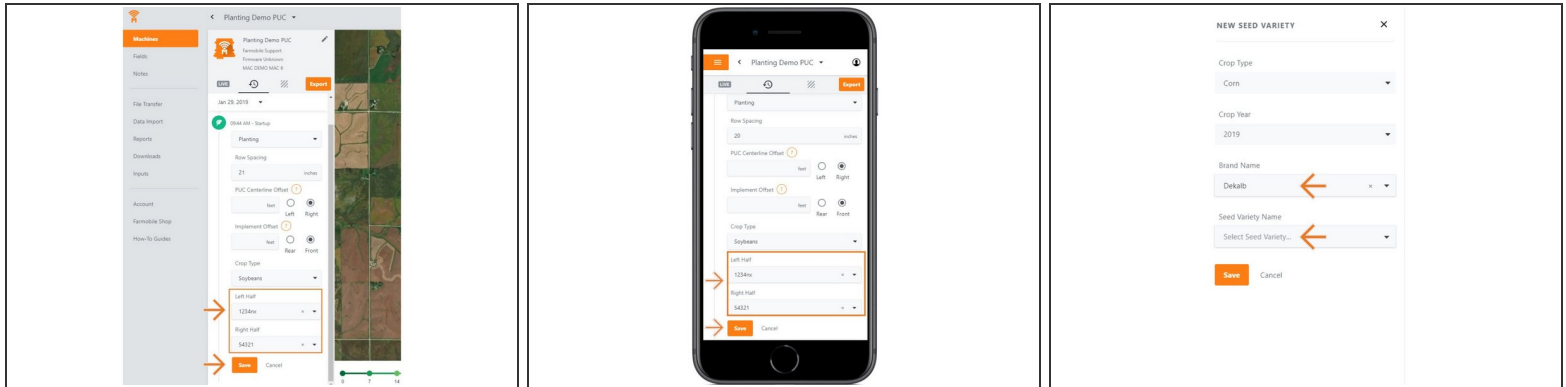
- Select the History tab to open the history page for the selected machine.
- The History page will open with the last active day selected.

Step 4 — Select Day and Edit



- Select the calendar picker to view a different day. Days containing Machine History are highlighted black.
- Select edit to expand the adjustment options within the required session.
- The available options to adjust vary based on the current activity type.

Step 5 — Make Seed Variety Adjustment and Save



- To make a Seed Variety adjustment, you must have a Crop Type defined first.
- Once a Crop Type is selected, use the Left Half and Right Half drop down menus to select the correct seed variety.
- The Seed Variety list is populated by previously created Inputs (see Input guide).
- If needed, you can select 'Add Seed Variety' to open the New Seed Variety menu.
 - Select the Brand Name & Seed Variety Name and select 'Save'.
 - The new variety will be added to your Left & Right Half drop down menus.
- Select 'Save' to make the adjustment.