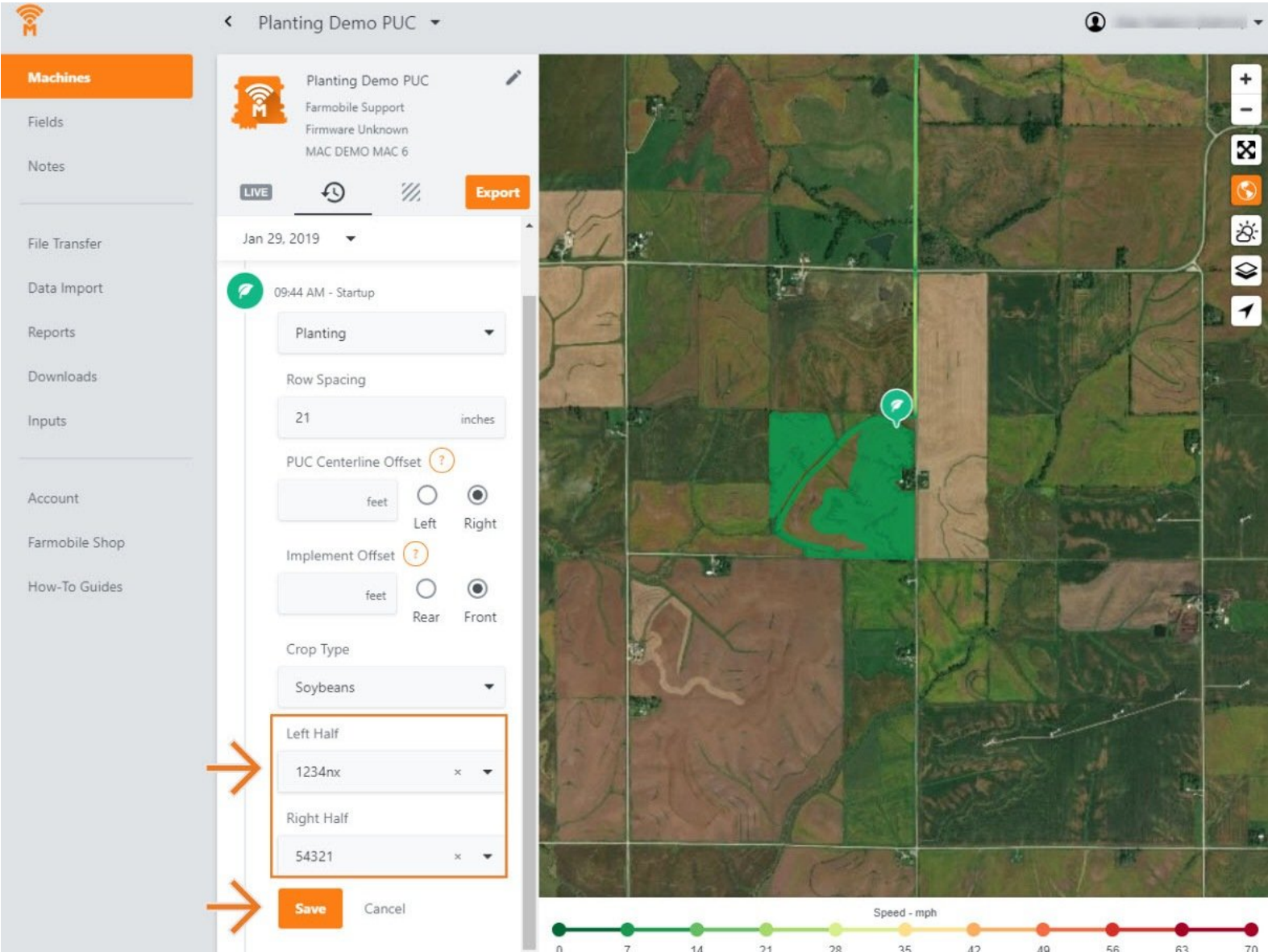




Planting - Seed Variety

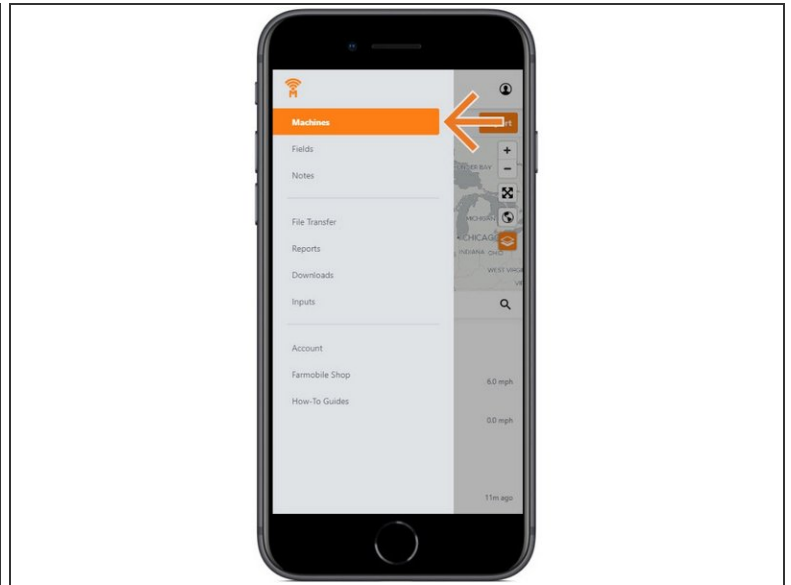
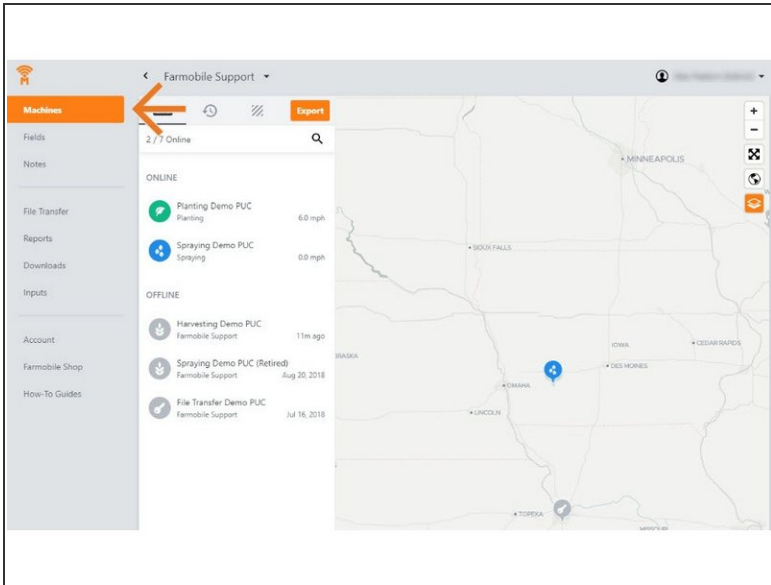
Written By: Support



INTRODUCTION

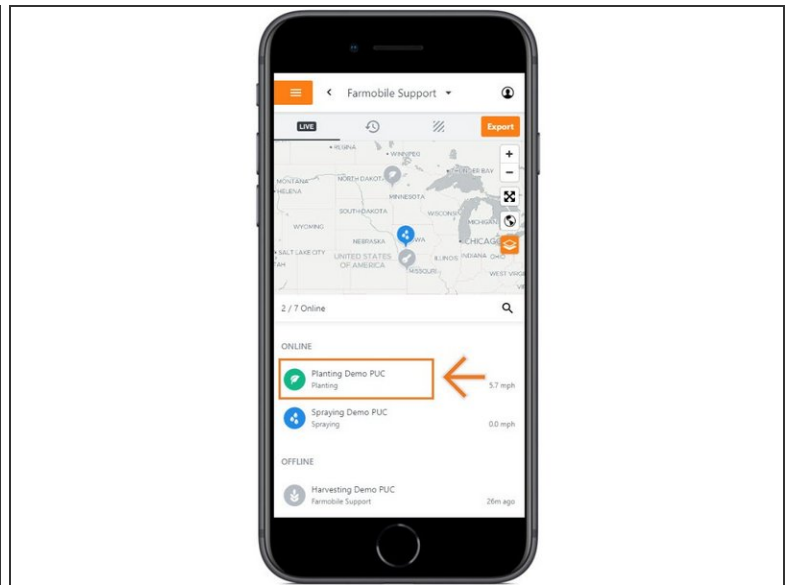
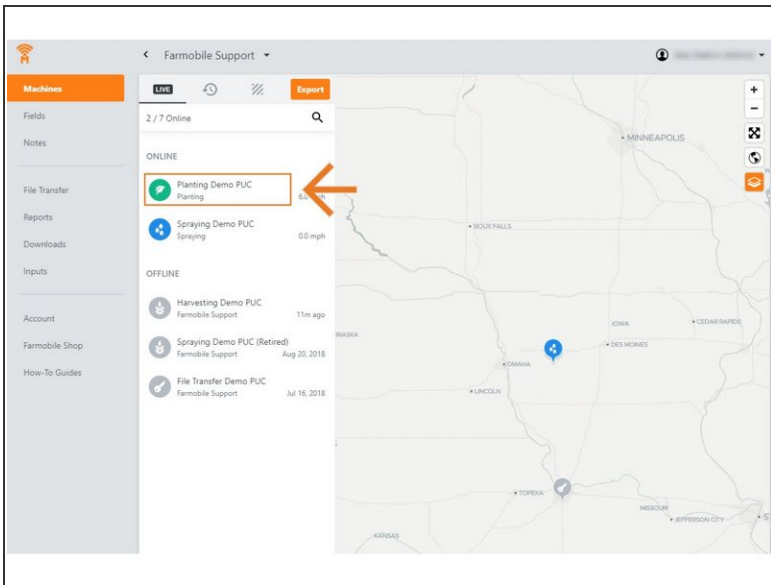
- History Machine Adjustments are only available at the Machine level.
- Seed Variety Adjustments are only available for planting activity.
- Seed Variety Adjustments carry forward to the end of the year or up to the next user-entered seed variety adjustment.
 - Per Farmobile PUC™ device.
- You must define a crop type to make a seed variety adjustment.
- You can add a seed variety for both the Left Half and Right Half.
- The list of available seed varieties to add is controlled by what Inputs (see Input guides) you have added to the system.
 - By Crop Type & Year.

Step 1 — Select Machines from the Farmobile DataEngineSM Platform



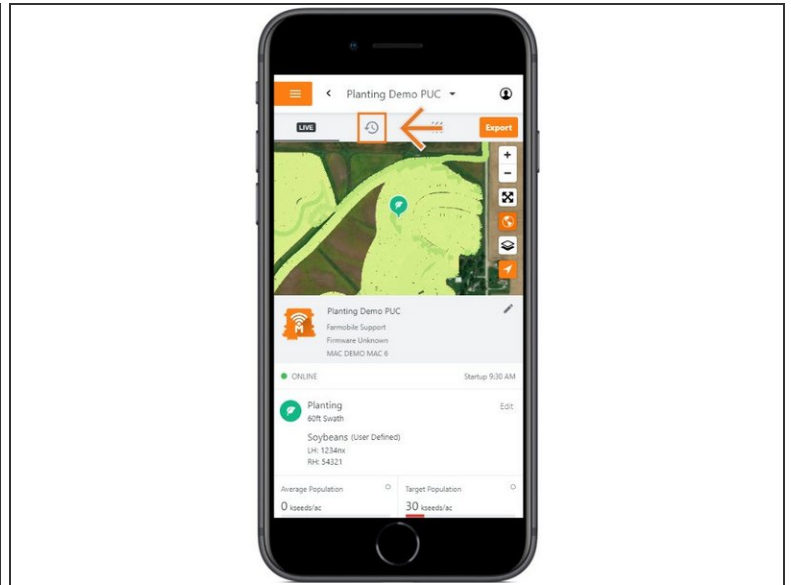
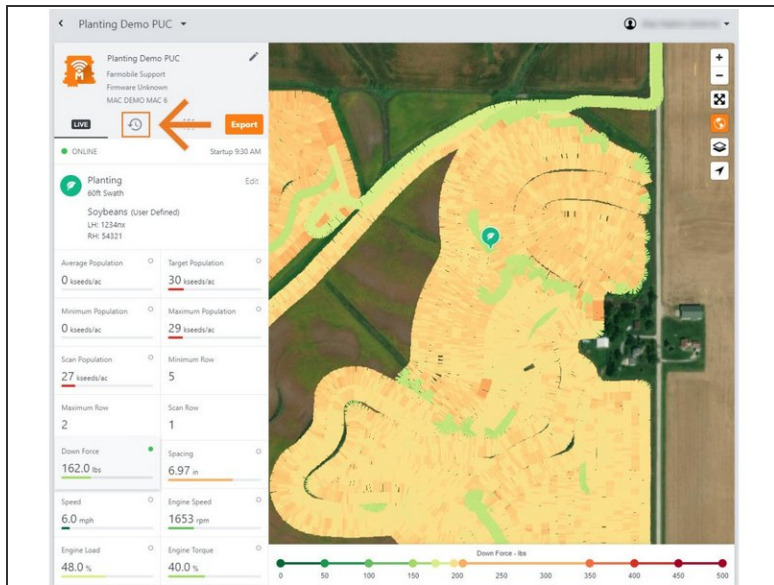
- Selecting Machines from the Farmobile DataEngine platform menu will open the Machines page with all of your Farmobile PUC device listed and displayed on the map.

Step 2 — Select a Machine



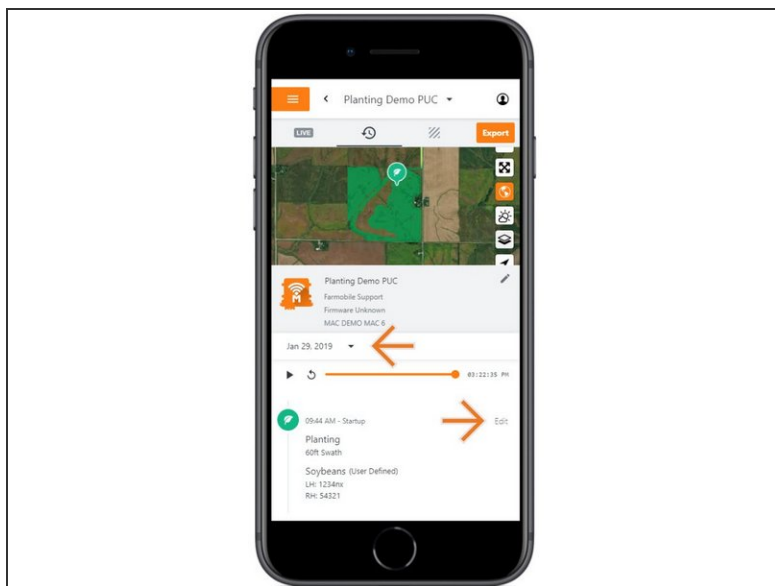
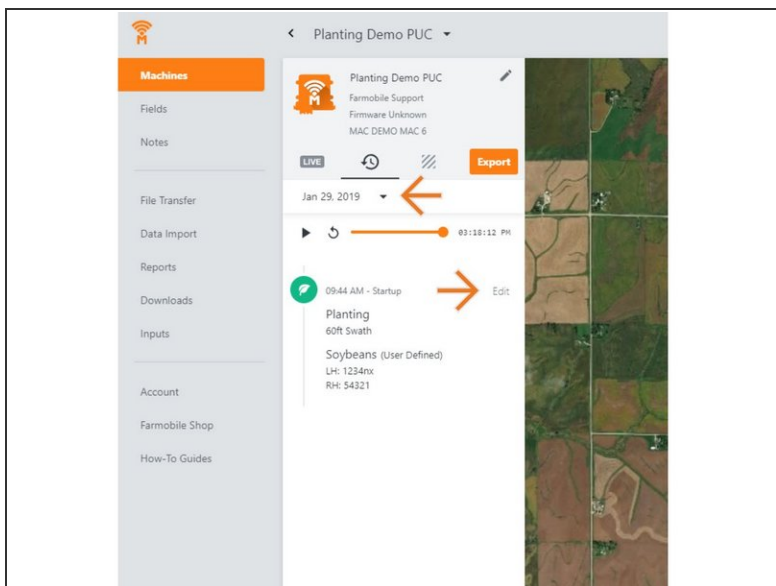
- Select a machine to open the machine details page.

Step 3 — Select History



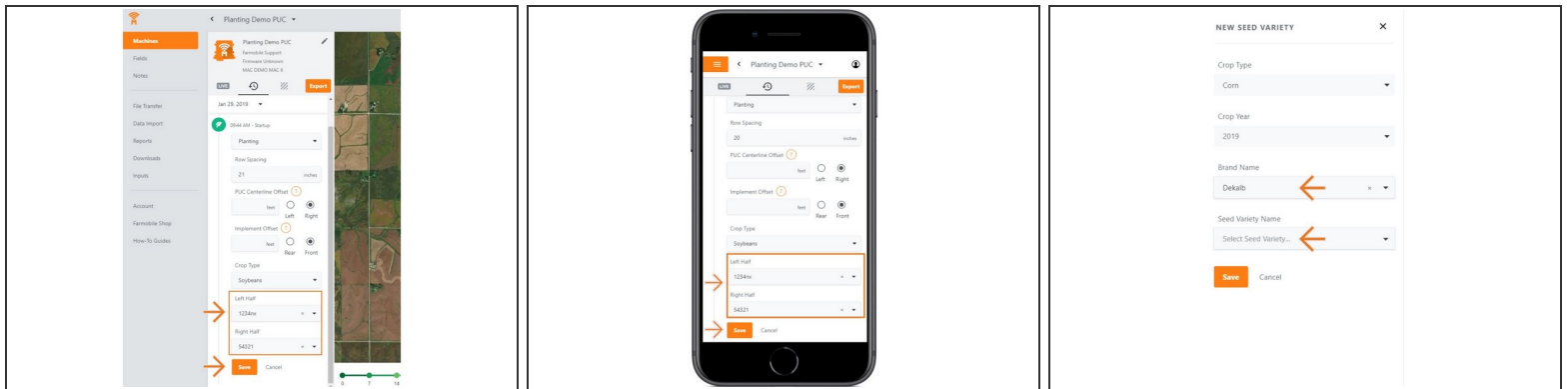
- Select the History tab to open the history page for the selected machine.
- The History page will open with the last active day selected.

Step 4 — Select Day and Edit



- Select the calendar picker to view a different day. Days containing Machine History are highlighted black.
- Select edit to expand the adjustment options within the required session.
- The available options to adjust vary based on the current activity type.

Step 5 — Make Seed Variety Adjustment and Save



- To make a Seed Variety adjustment, you must have a Crop Type defined first.
- Once a Crop Type is selected, use the Left Half and Right Half drop down menus to select the correct seed variety.
- The Seed Variety list is populated by previously created Inputs (see Input guide).
- If needed, you can select 'Add Seed Variety' to open the New Seed Variety menu.
 - Select the Brand Name & Seed Variety Name and select 'Save'.
 - The new variety will be added to your Left & Right Half drop down menus.
- Select 'Save' to make the adjustment.