



Planting - Seed Variety

Written By: Support

Machines

- Fields
- Notes
- File Transfer
- Data Import
- Reports
- Downloads
- Inputs
- Account
- Farmobile Shop
- How-To Guides

Planting Demo PUC

Planting Demo PUC
Farmobile Support
Firmware Unknown
MAC DEMO MAC 6

LIVE

Jan 29, 2019

09:44 AM - Startup

Planting

Row Spacing
21 inches

PUC Centerline Offset
feet
Left Right

Implement Offset
feet
Rear Front

Crop Type
Soybeans

Left Half
1234nx

Right Half
54321

Save Cancel

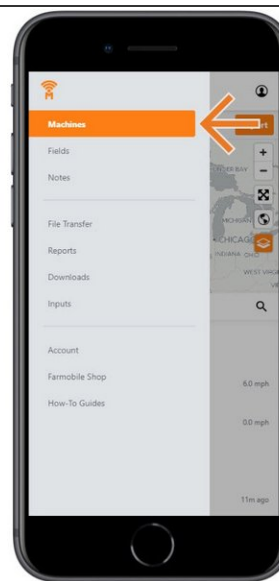
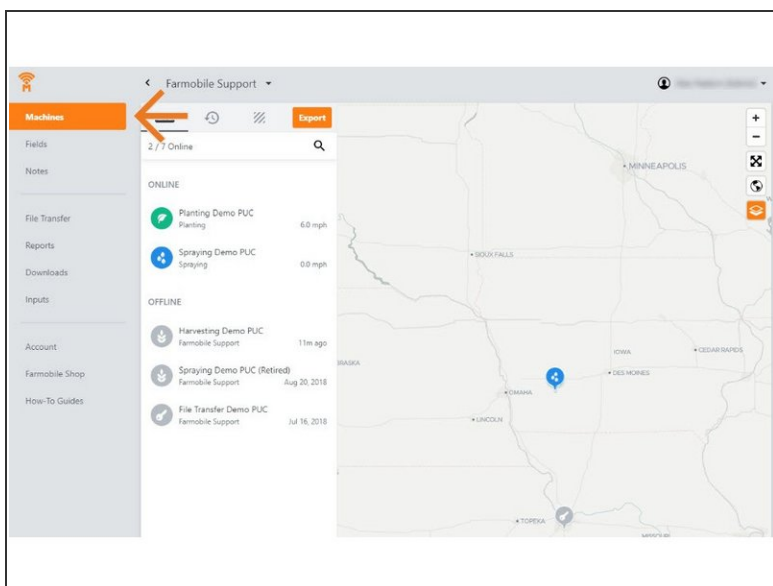
Speed - mph

0 7 14 21 28 35 42 49 56 63 70

INTRODUCTION

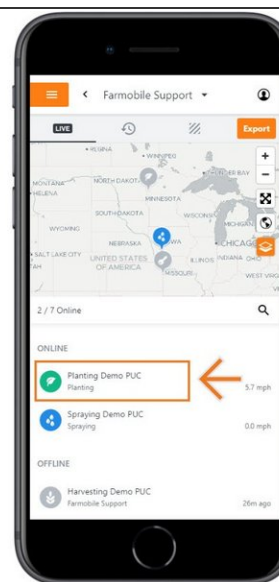
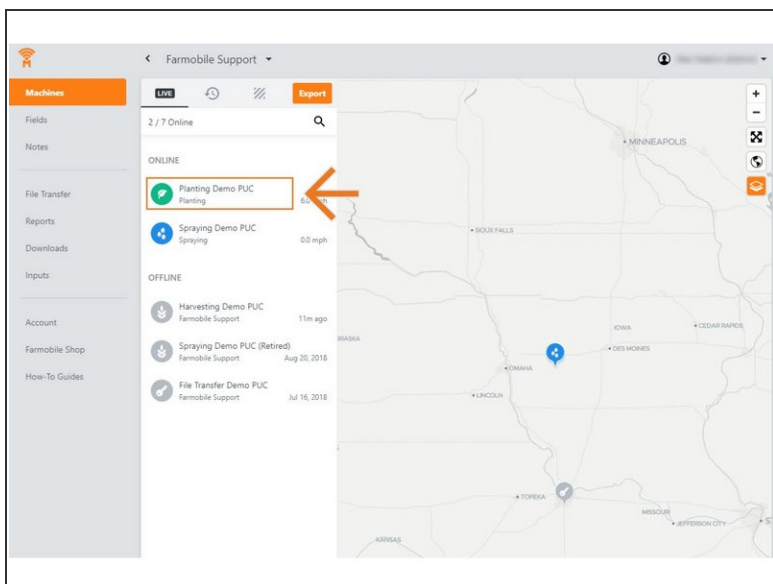
- History Machine Adjustments are only available at the Machine level.
- Seed Variety Adjustments are only available for Planting activity.
- Seed Variety Adjustments carry forward to the end of the year or up to the next user entered seed variety adjustment.
 - Per PUC.
- You must define a crop type to make a seed variety adjustment.
- You can add a seed variety for both the Left Half and Right Half.
- The list of available seed varieties to add is controlled by what Inputs (see Input guides) you have added to the system.
 - By Crop Type & Year.

Step 1 — Select Machines from the Farmobile DataEngineSM Menu



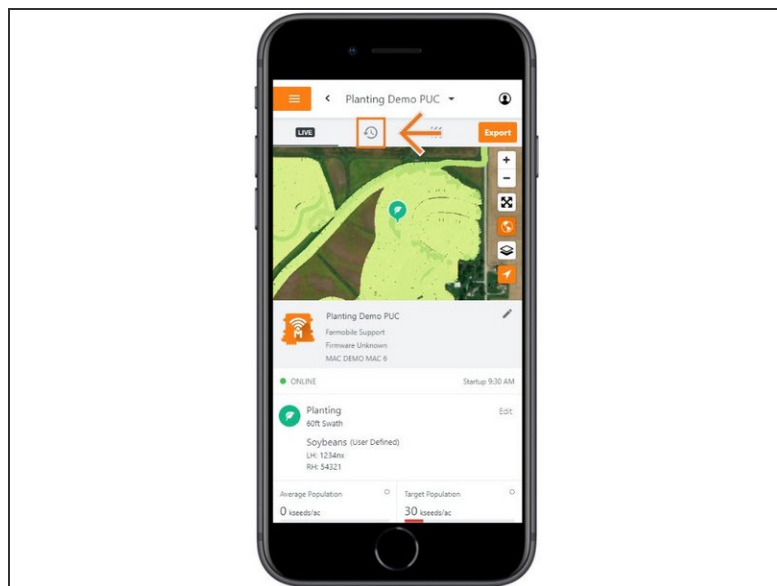
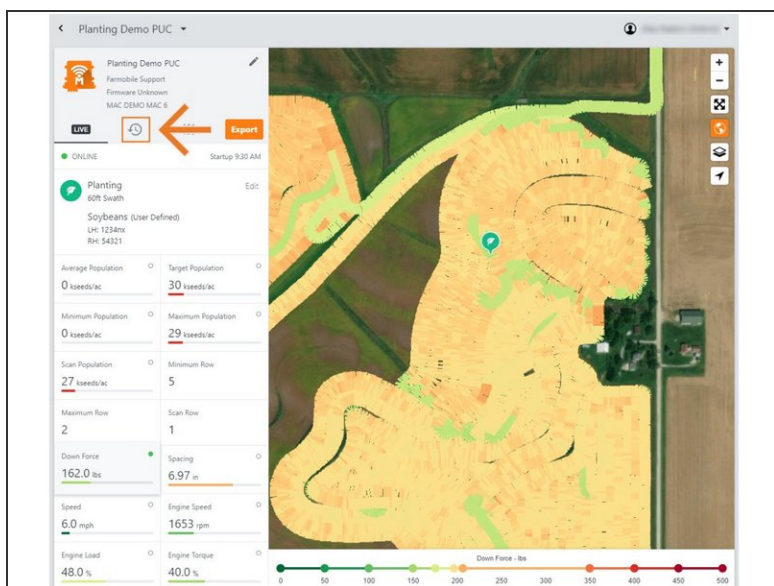
- Selecting Machines from the Farmobile DataEngine menu will open the Machines page with all of your PUCTM listed and displayed on the map.

Step 2 — Select a Machine



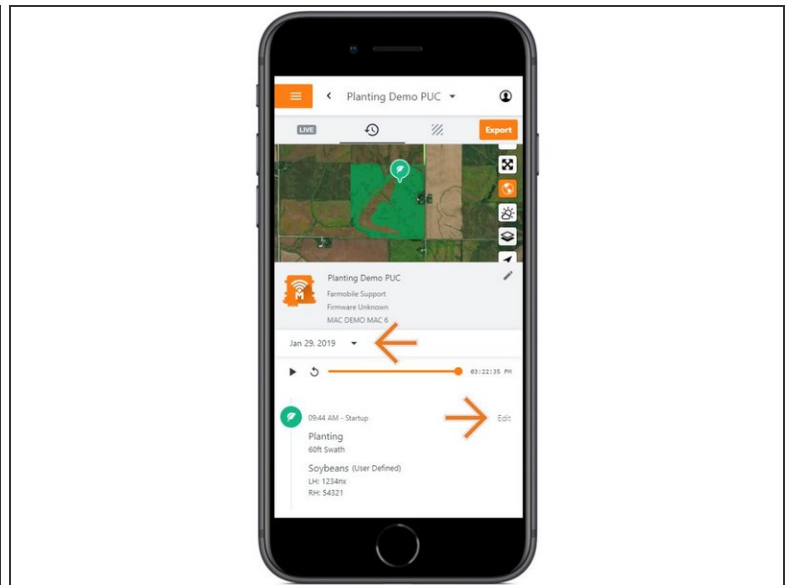
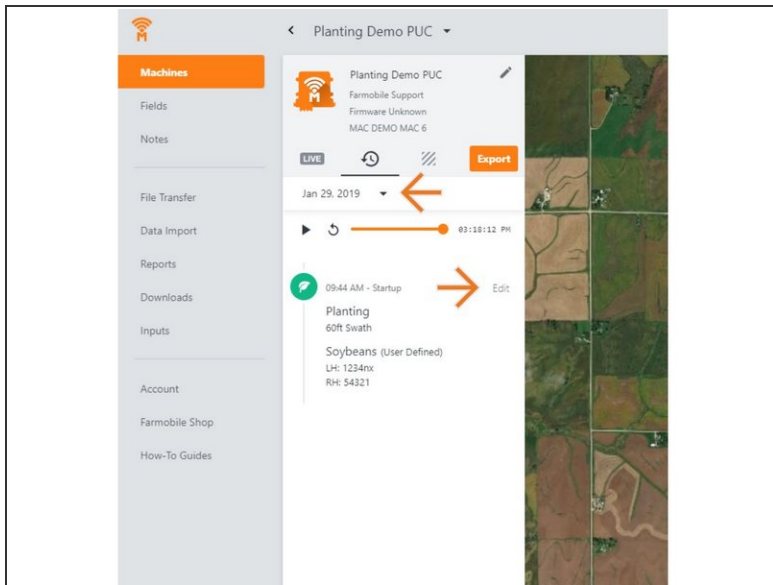
- Select a machine to open the machine details page.

Step 3 — Select History



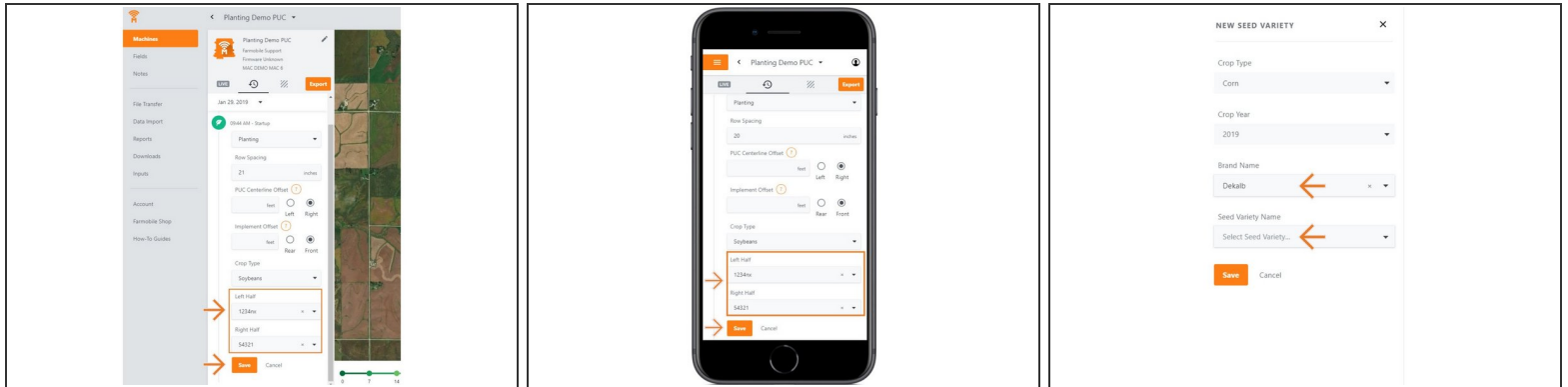
- Select the History tab to open the history page for the selected machine.
- The History page will open with the last active day selected.

Step 4 — Select Day and Edit



- Select the calendar picker to view a different day. Days containing Machine History are highlighted black.
- Select edit to expand the adjustment options within the required session.
- The available options to adjust vary based on the current activity type.

Step 5 — Make Seed Variety Adjustment and Save



- To make a Seed Variety adjustment, you must have a Crop Type defined first.
- Once a Crop Type is selected, use the Left Half and Right Half drop down menus to select the correct seed variety.
- The Seed Variety list is populated by previously created Inputs (see Input guide).
- If needed, you can select 'Add Seed Variety' to open the New Seed Variety menu.
 - Select the Brand Name & Seed Variety Name and select 'Save'.
 - The new variety will be added to your Left & Right Half drop down menus.
- Select 'Save' to make the adjustment.