



Edit Planter Row Spacing

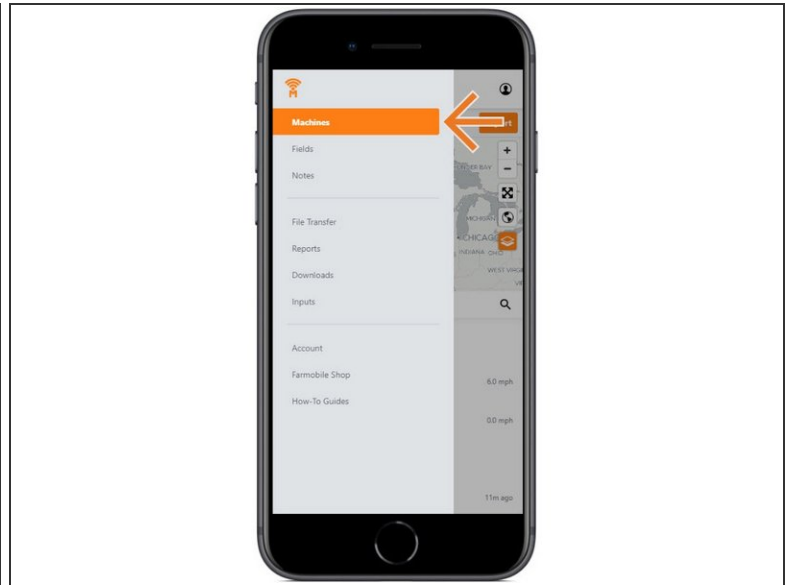
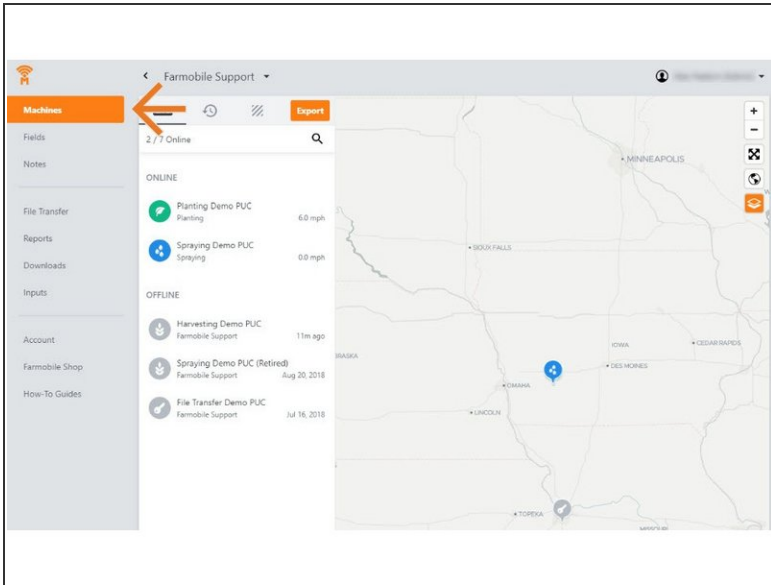
Written By: Support

The screenshot displays the Farmobile app's 'Edit Planter Row Spacing' interface. On the left is a sidebar menu with options: Machines, Fields, Notes, File Transfer, Data Import, Reports, Downloads, Inputs, Account, Farmobile Shop, and How-To Guides. The main area is titled 'Planting Demo PUC' and includes a 'LIVE' status indicator, a clock icon, and an 'Export' button. Below this, the date is set to 'Jan 29, 2019'. A green speech bubble icon indicates a message at '09:44 AM - Startup'. The 'Planting' mode is selected. The 'Row Spacing' is set to '21 inches'. The 'PUC Centerline Offset' is set to 'feet' with radio buttons for 'Left' and 'Right'. The 'Implement Offset' is set to 'feet' with radio buttons for 'Rear' and 'Front'. The 'Crop Type' is 'Soybeans'. The 'Left Half' is '1234nx' and the 'Right Half' is '54321'. At the bottom are 'Save' and 'Cancel' buttons. On the right is a satellite map of a field with a green highlighted area and a green speech bubble icon. A speedometer at the bottom shows 'Speed - mph' with a scale from 0 to 70.

INTRODUCTION

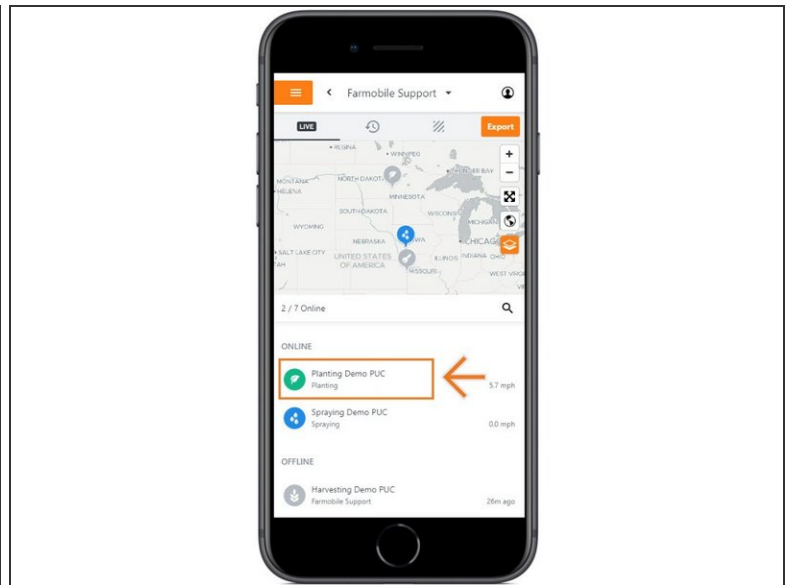
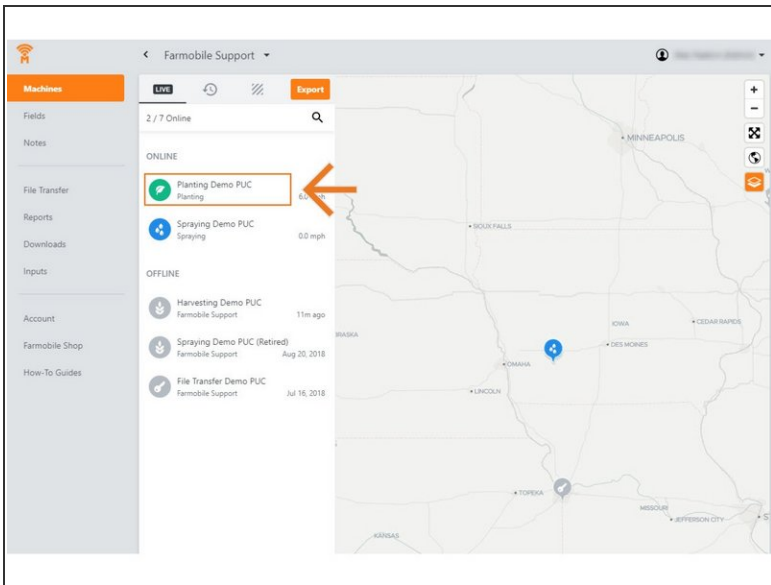
- History Machine Adjustments are only available at the Machine level.
- Row Spacing Adjustments are only available for Planting activity.
- Row Spacing Adjustments carry forward to the end of the year or up to the next user-entered row spacing adjustment.
 - Per Farmobile PUC™ device.
- To increase the accuracy of your average population values, provide in inches the exact row spacing of your planter.
 - Default value = 30"

Step 1 — Select Machines from the Farmobile DataEngineSM Platform



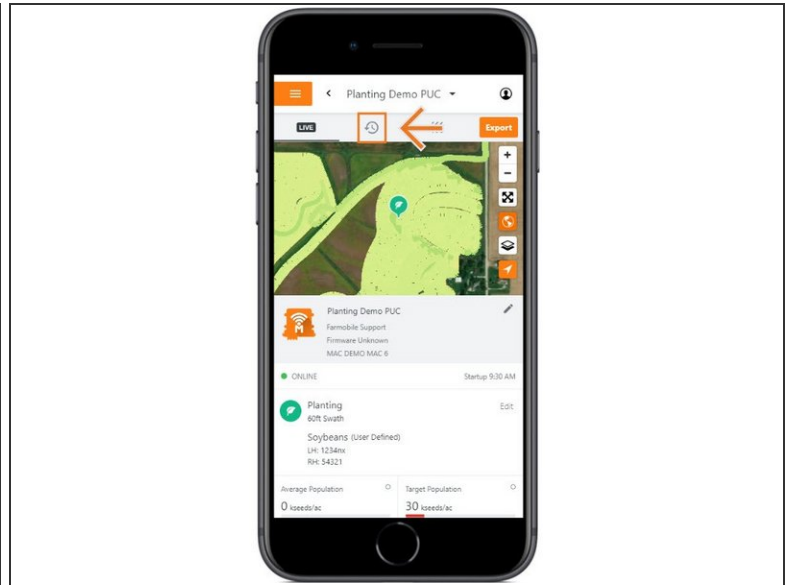
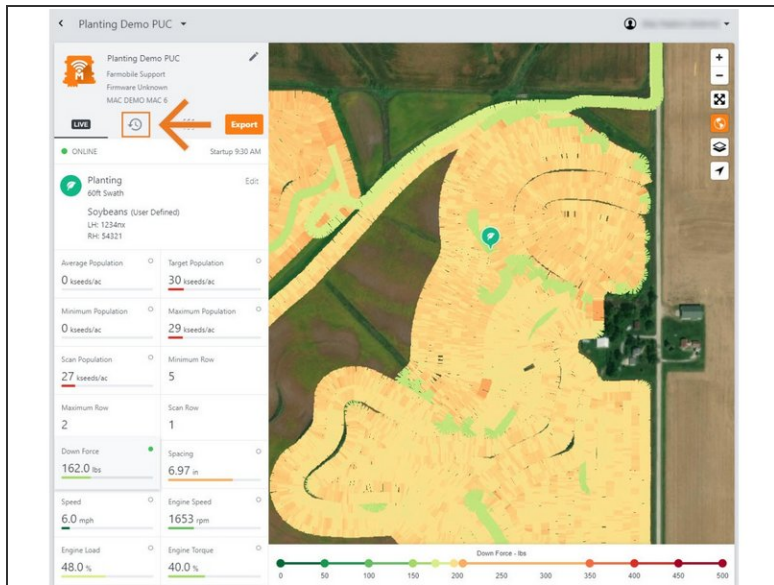
- Selecting Machines from the Farmobile DataEngine platform menu will open the Machines page with all of your Farmobile PUC device listed and displayed on the map.

Step 2 — Select a Machine



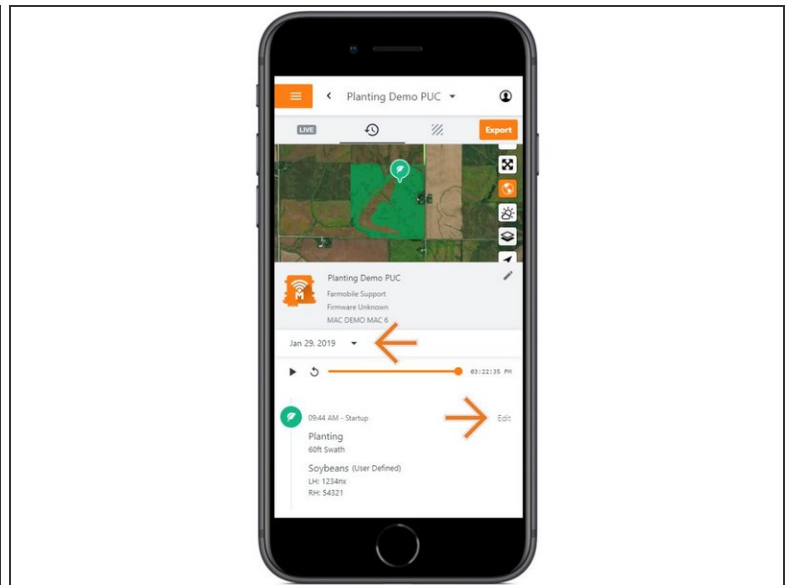
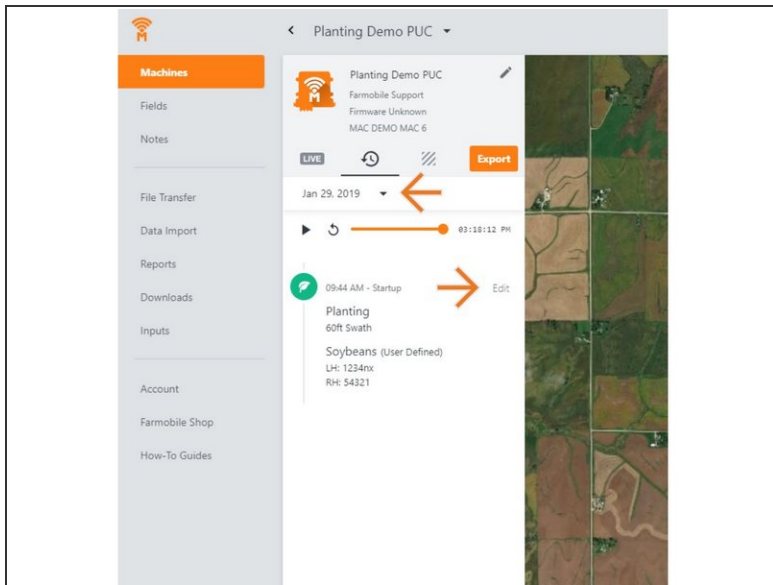
- Select a machine to open the machine details page.

Step 3 — Select History



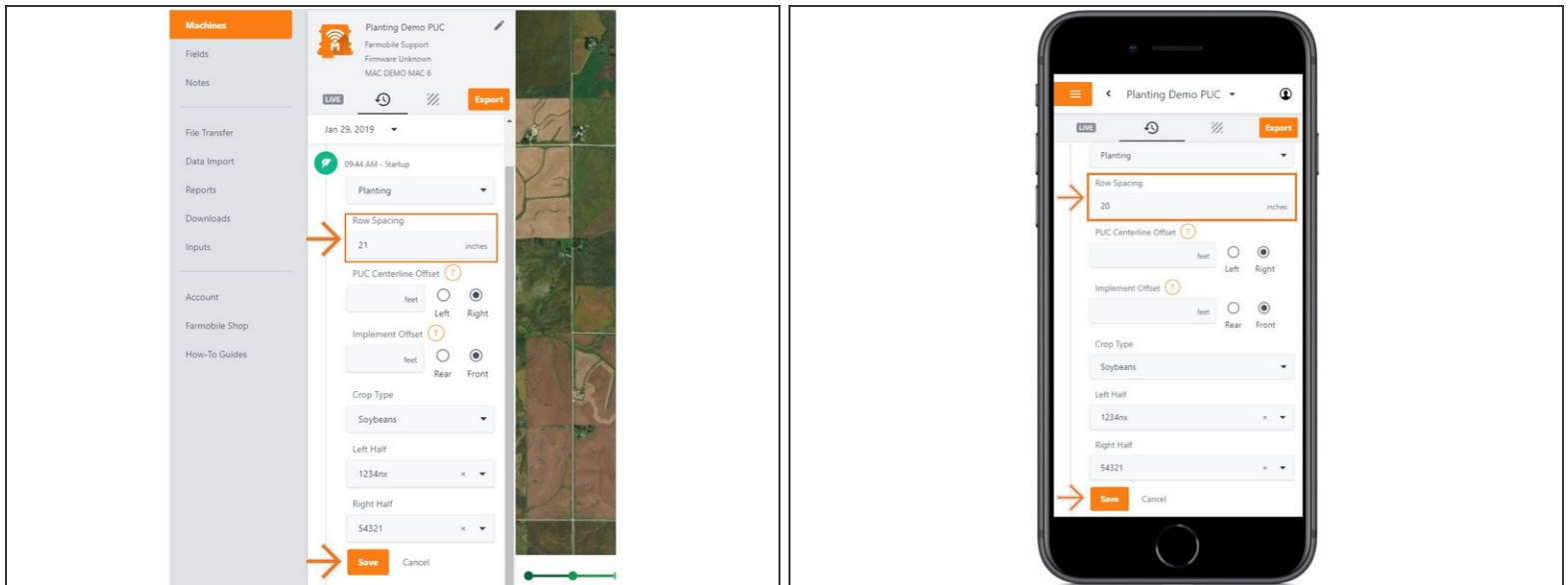
- Select the History tab to open the history page for the selected machine.
- The History page will open with the last active day selected.

Step 4 — Select Day and Edit



- Select the calendar picker to view a different day. Days containing Machine History are highlighted black.
- Select edit to expand the adjustment options within the required session.
- The available options to adjust vary based on the current activity type.

Step 5 — Make Row Spacing Adjustment and Save



- Provide in inches, your planters row spacing value.
- NOTE: The default value of 30" will be applied if another value is not provided.
- Select 'Save' to make the adjustment.