



Planting - Row Spacing

Written By: Support

Machines

Fields

Notes

File Transfer

Data Import

Reports

Downloads

Inputs

Account

Farmobile Shop

How-To Guides

Planting Demo PUC

Planting Demo PUC

Farmobile Support

Firmware Unknown

MAC DEMO MAC 6

LIVE

Export

Jan 29, 2019

09:44 AM - Startup

Planting

▼

Row Spacing

21

inches

PUC Centerline Offset

feet

?

Left

Right

Implement Offset

feet

?

Rear

Front

Crop Type

Soybeans

▼

Left Half

1234nx

x

▼

Right Half

54321

x

▼

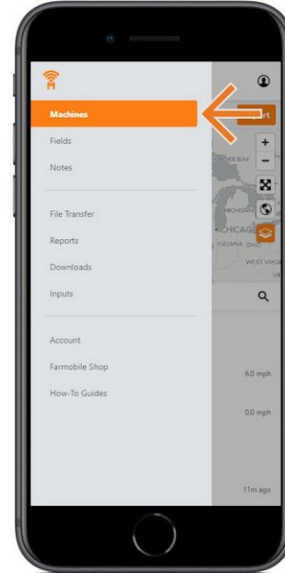
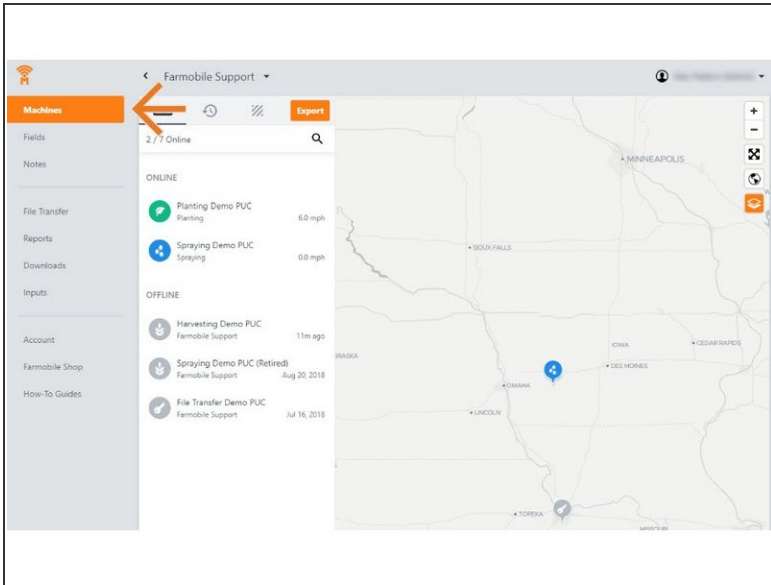
Save

Cancel

INTRODUCTION

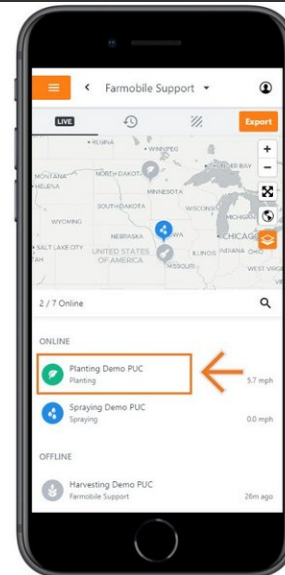
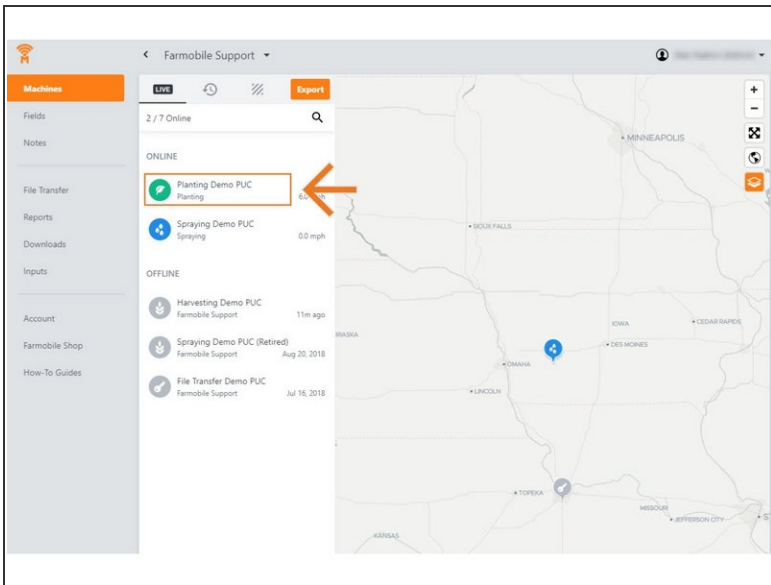
- History Machine Adjustments are only available at the Machine level.
- Row Spacing Adjustments are only available for Planting activity.
- Row Spacing Adjustments carry forward to the end of the year or up to the next user-entered row spacing adjustment.
 - Per Farmobile PUC™ device.
- To increase the accuracy of your average population values, provide in inches the exact row spacing of your planter.
 - Default value = 30"

Step 1 — Select Machines from the Farmobile DataEngineSM Platform



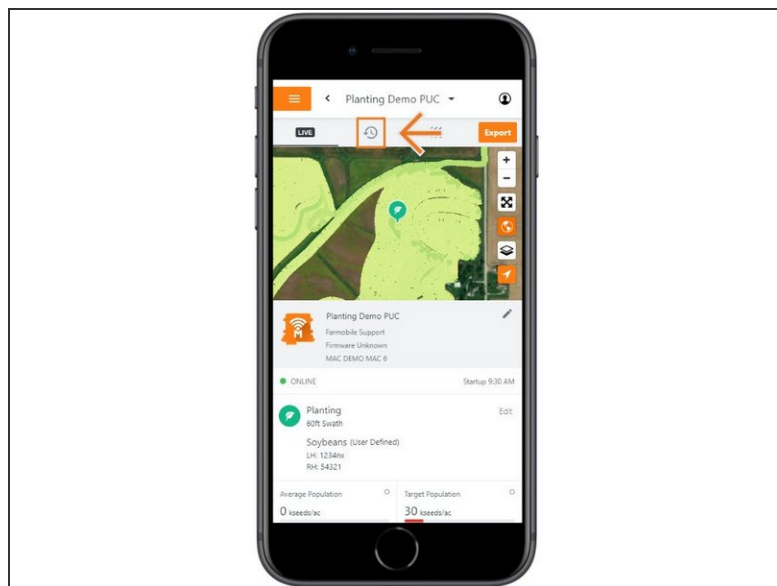
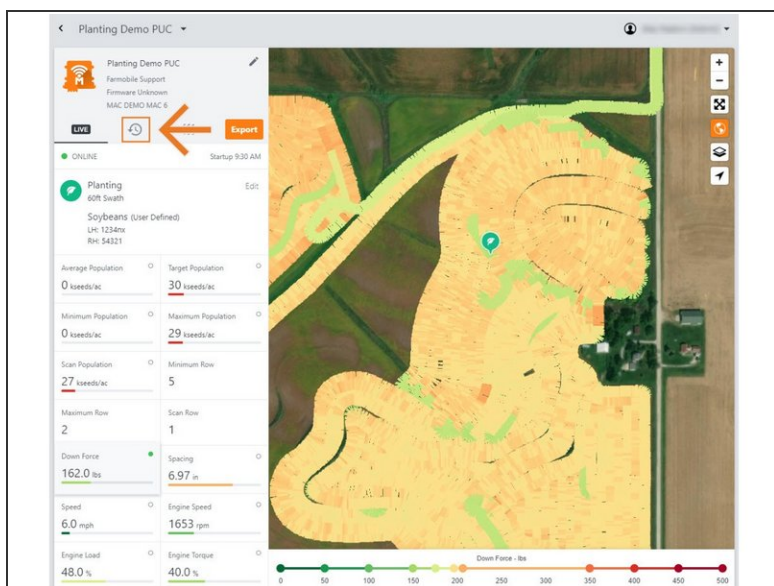
- Selecting Machines from the Farmobile DataEngine platform menu will open the Machines page with all of your Farmobile PUC device listed and displayed on the map.

Step 2 — Select a Machine



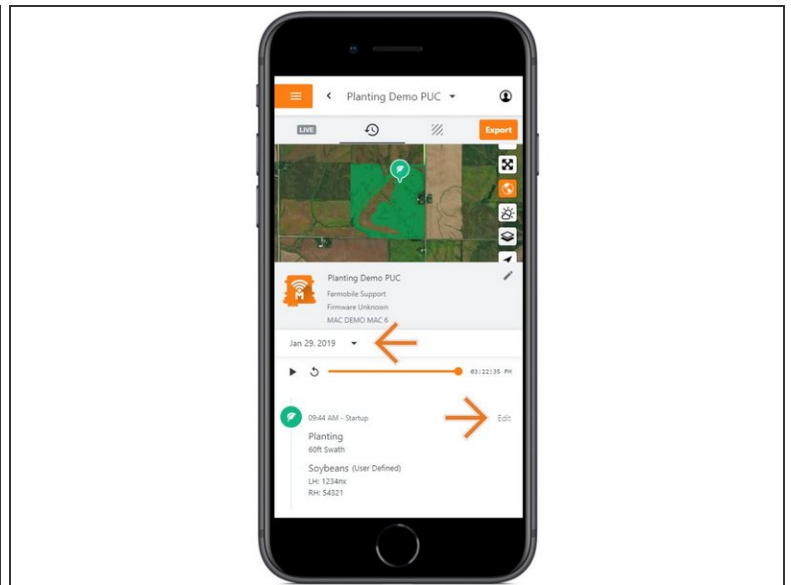
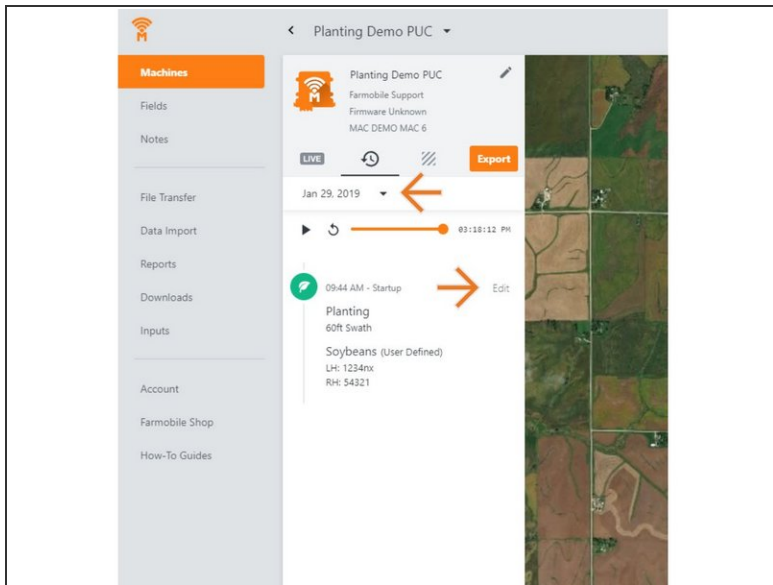
- Select a machine to open the machine details page.

Step 3 — Select History



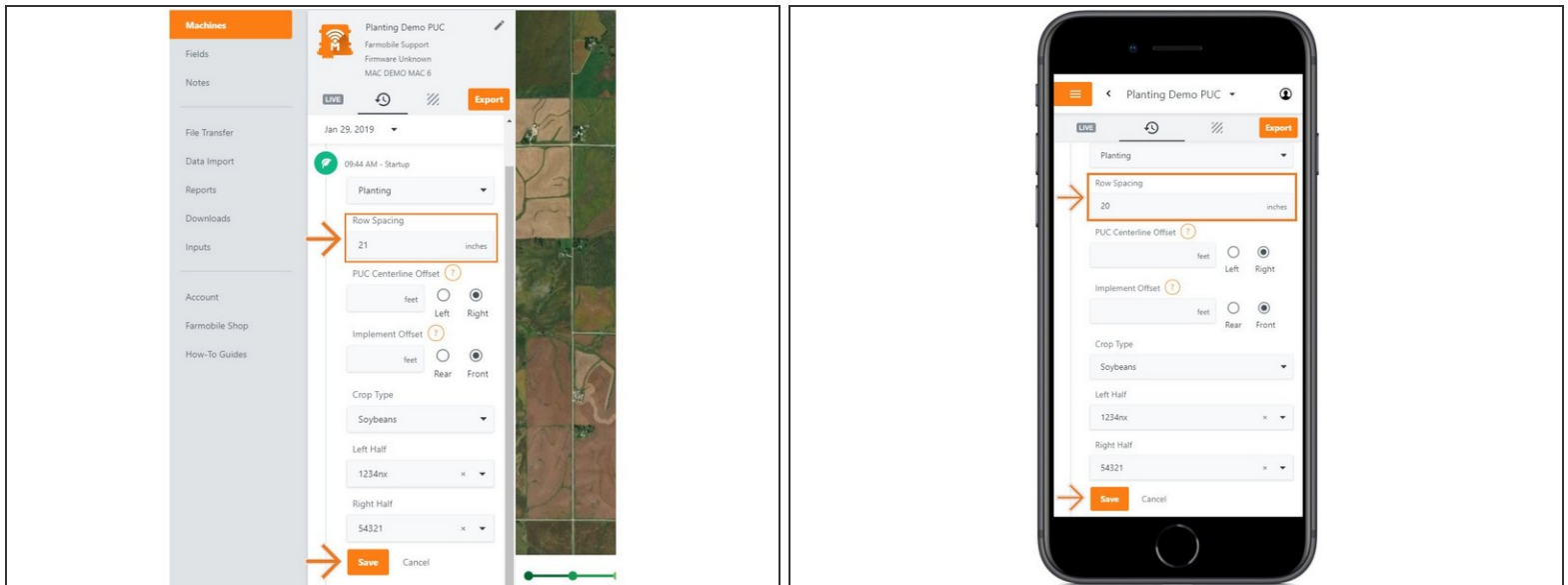
- Select the History tab to open the history page for the selected machine.
- The History page will open with the last active day selected.

Step 4 — Select Day and Edit



- Select the calendar picker to view a different day. Days containing Machine History are highlighted black.
- Select edit to expand the adjustment options within the required session.
- The available options to adjust vary based on the current activity type.

Step 5 — Make Row Spacing Adjustment and Save



- Provide in inches, your planters row spacing value.
- NOTE: The default value of 30" will be applied if another value is not provided.
- Select 'Save' to make the adjustment.