



# Planting - Row Spacing

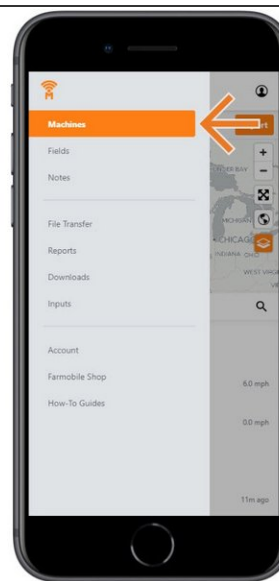
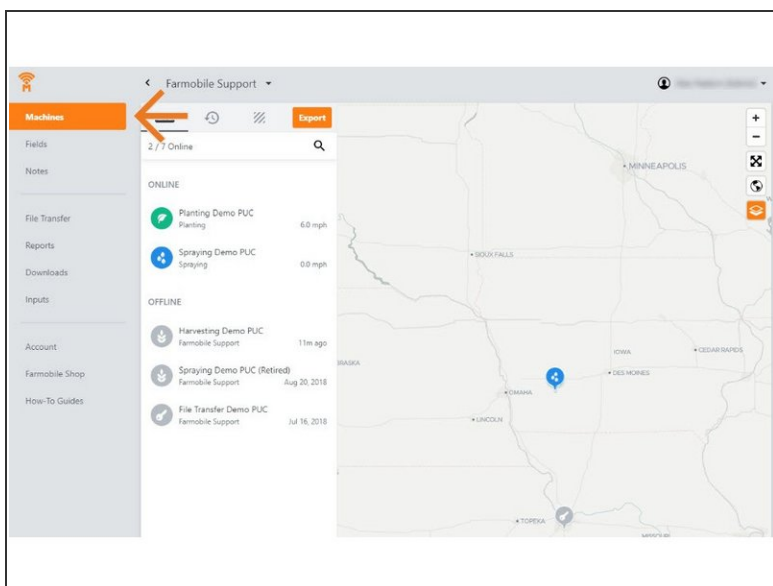
Written By: Support

The screenshot displays the Farmobile app's "Planting Demo PUC" screen. On the left is a sidebar menu with options: Machines, Fields, Notes, File Transfer, Data Import, Reports, Downloads, Inputs, Account, Farmobile Shop, and How-To Guides. The main area is divided into a settings panel on the left and a map on the right. The settings panel includes a "LIVE" indicator, a date selector for "Jan 29, 2019", a time "09:44 AM - Startup", and a "Planting" dropdown. Below these are fields for "Row Spacing" (set to 21 inches), "PUC Centerline Offset" (with radio buttons for Left and Right), "Implement Offset" (with radio buttons for Rear and Front), "Crop Type" (set to Soybeans), "Left Half" (1234nx), and "Right Half" (54321). At the bottom of the settings are "Save" and "Cancel" buttons. The map on the right shows a satellite view of a field with a green planting area and a green location pin. A speedometer at the bottom of the map indicates "Speed - mph" with a scale from 0 to 70.

## INTRODUCTION

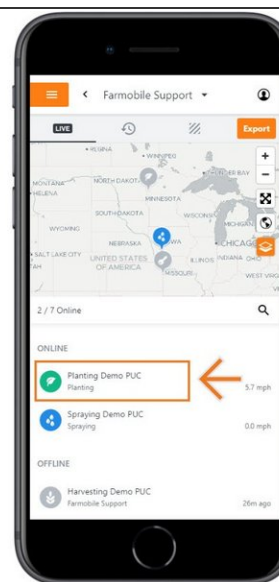
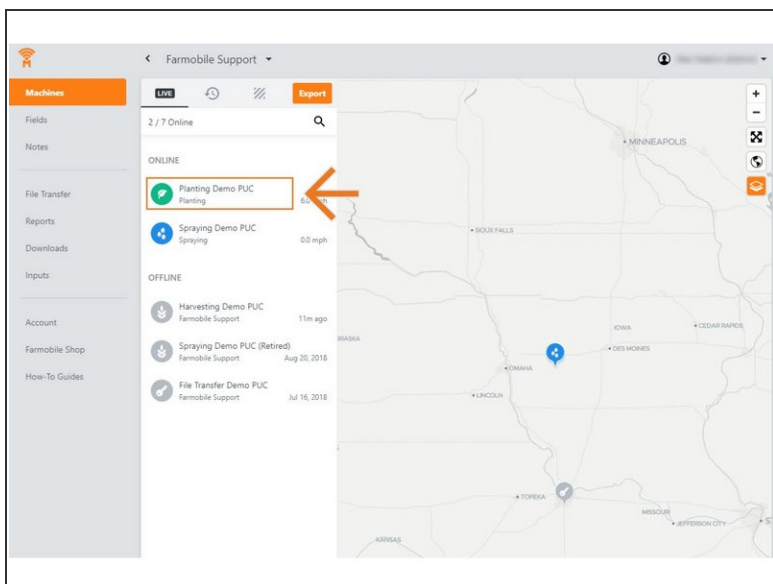
- History Machine Adjustments are only available at the Machine level.
- Row Spacing Adjustments are only available for Planting activity.
- Row Spacing Adjustments carry forward to the end of the year or up to the next user entered row spacing adjustment.
  - Per PUC.
- To increase the accuracy of your Average Population values, provide in inches the exact row spacing of your planter.
  - Default value = 30"

## Step 1 — Select Machines from the Farmobile DataEngine<sup>SM</sup> Menu



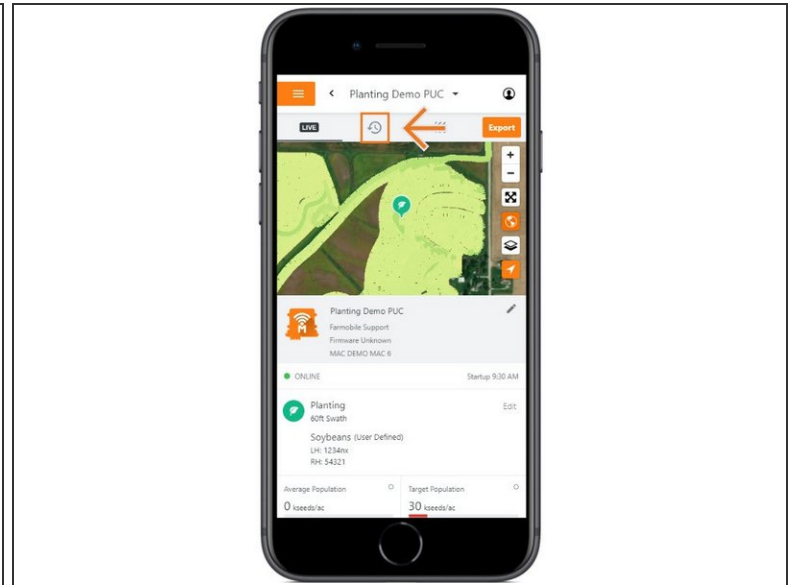
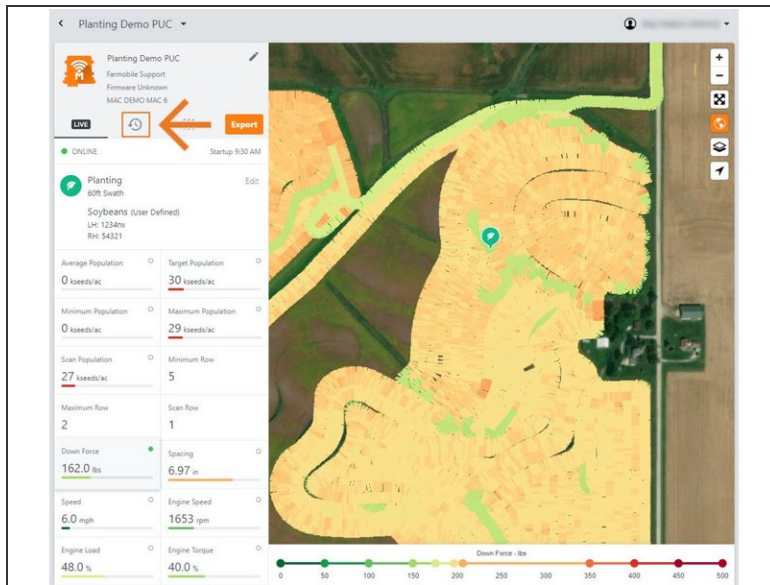
- Selecting Machines from the Farmobile DataEngine menu will open the Machines page with all of your PUC<sup>TM</sup> listed and displayed on the map.

## Step 2 — Select a Machine



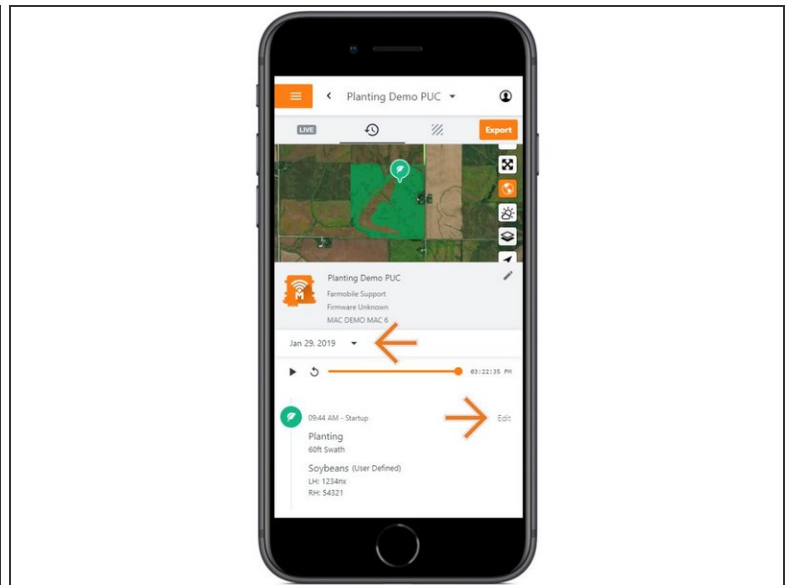
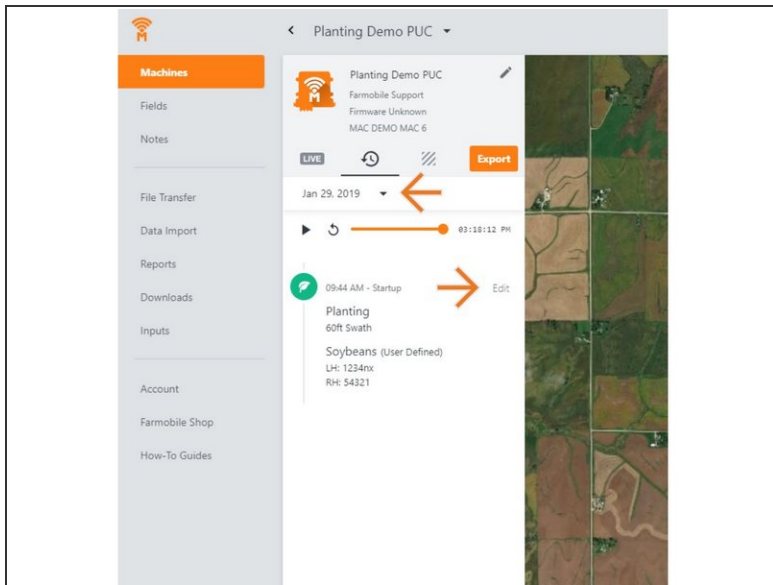
- Select a machine to open the machine details page.

## Step 3 — Select History



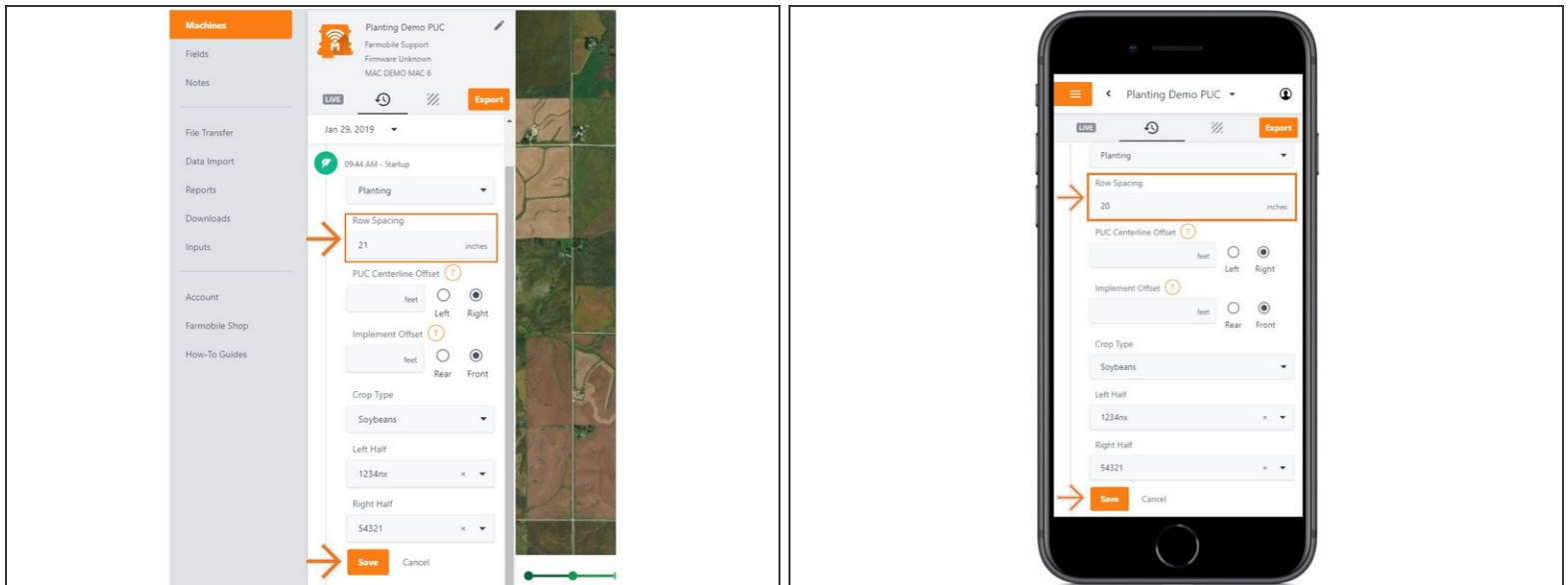
- Select the History tab to open the history page for the selected machine.
- The History page will open with the last active day selected.

## Step 4 — Select Day and Edit



- Select the calendar picker to view a different day. Days containing Machine History are highlighted black.
- Select edit to expand the adjustment options within the required session.
- The available options to adjust vary based on the current activity type.

## Step 5 — Make Row Spacing Adjustment and Save



- Provide in inches, your planters row spacing value.
- NOTE: The default value of 30" will be applied if another value is not provided.
- Select 'Save' to make the adjustment.