



# Edit GPS Offsets

Written By: Support

The screenshot displays the Farmobile app interface. On the left is a sidebar menu with options: Machines, Fields, Notes, File Transfer, Data Import, Reports, Downloads, Inputs, Account, Farmobile Shop, and How-To Guides. The main screen is titled 'Planting Demo PUC' and shows a map with a green line indicating a planting path. A modal window is open, titled 'Implement Offset', which explains that the offset is the distance and direction from the PUC Antenna to the implement. The modal includes a diagram of a machine with the PUC Antenna at the front and the implement at the rear. The diagram shows the machine facing forward, with the PUC Antenna at the front and the implement at the rear. The modal also includes a speedometer at the bottom showing speed in mph from 0 to 70.

**Implement Offset:** Enter the distance and direction your agronomic activity (e.g., toolbar or spray boom, etc) is from the PUC Antenna.

Machine Facing Forward

Front

PUC Antenna

Rear

Implement

Speed - mph

0 7 14 21 28 35 42 49 56 63 70

**Planting Demo PUC**

Farmobile Support  
Firmware Unknown  
MAC DEMO MAC 6

LIVE

Export

Jan 29, 2019

09:44 AM - Startup

Planting

Row Spacing  
21 inches

PUC Centerline Offset ?  
feet ☐ Left ☒ Right

Implement Offset ?  
feet ☐ Rear ☒ Front

Crop Type  
Soybeans

Left Half  
1234nx x

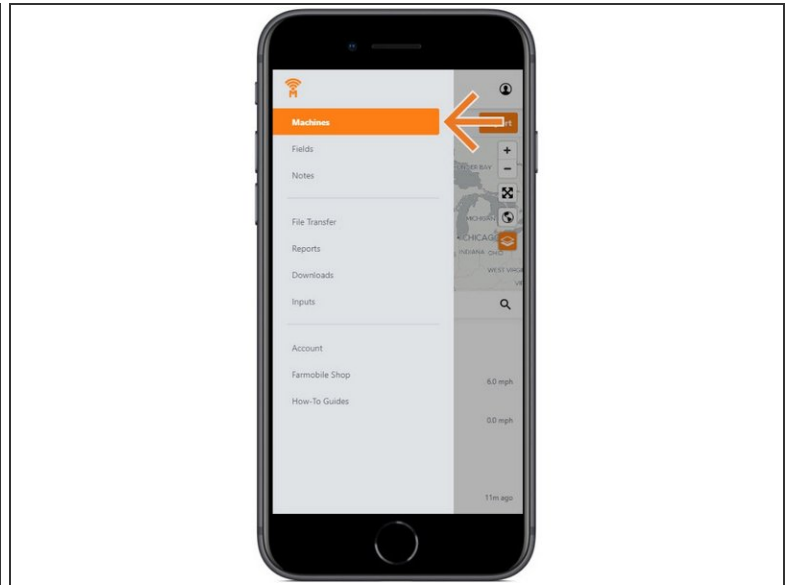
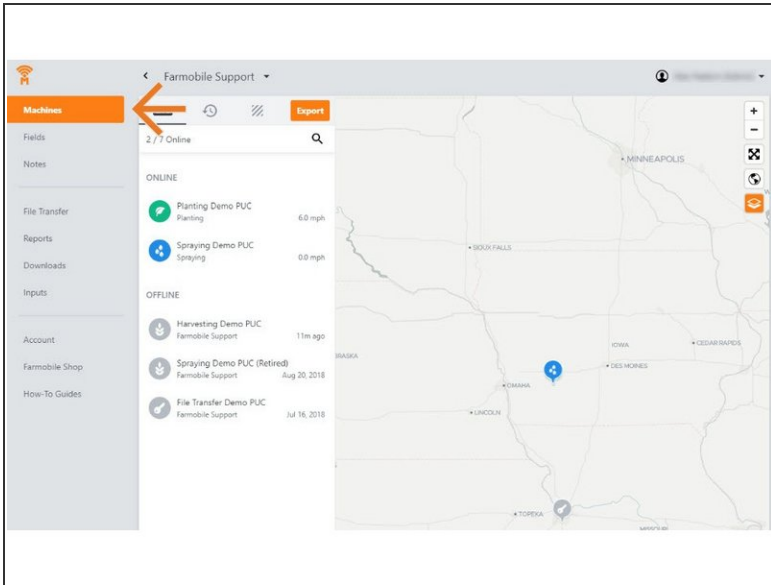
Right Half  
54321 x

Save Cancel

## INTRODUCTION

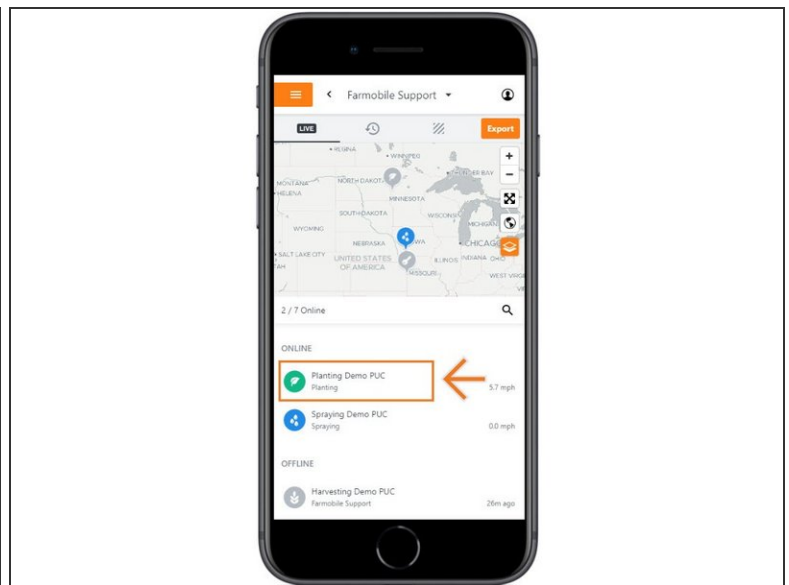
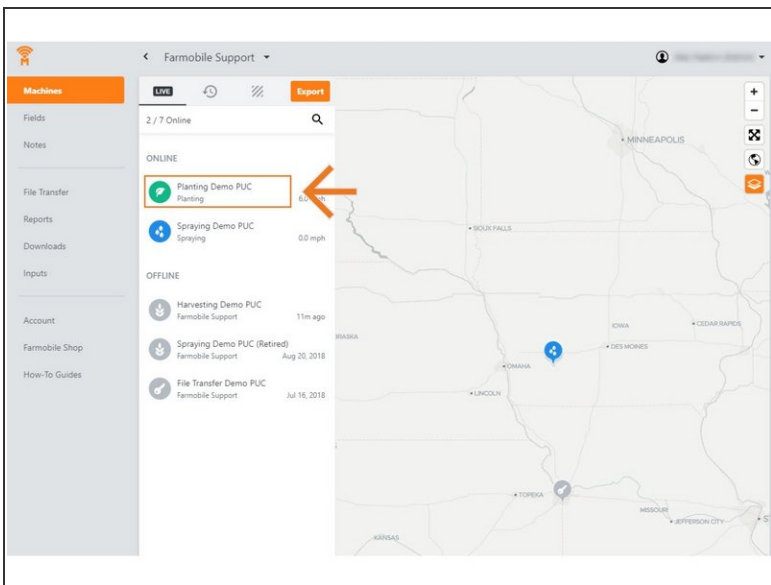
- History Machine Adjustments are only available at the Machine level.
- GPS Offset Adjustments are available for all activity types.
- GPS Offset Adjustments carry forward to the end of the year or up to the next user-entered GPS Offset adjustment.
  - Per 'Activity' type.
  - Per Farmobile PUC™ device.
- To place your agronomic data at the right location, the following offsets are available:
  - Antenna Centerline Offset: If the Farmobile PUC™ device antenna is not located directly in the center of the machine, provide the distance (ft.) and direction from the machine centerline.
  - Implement Offset: Enter the distance and direction your agronomic activity (e.g., toolbar or spray boom, etc) is from the Farmobile PUC device antenna.

## Step 1 — Select Machines from the Farmobile DataEngine<sup>SM</sup> Platform



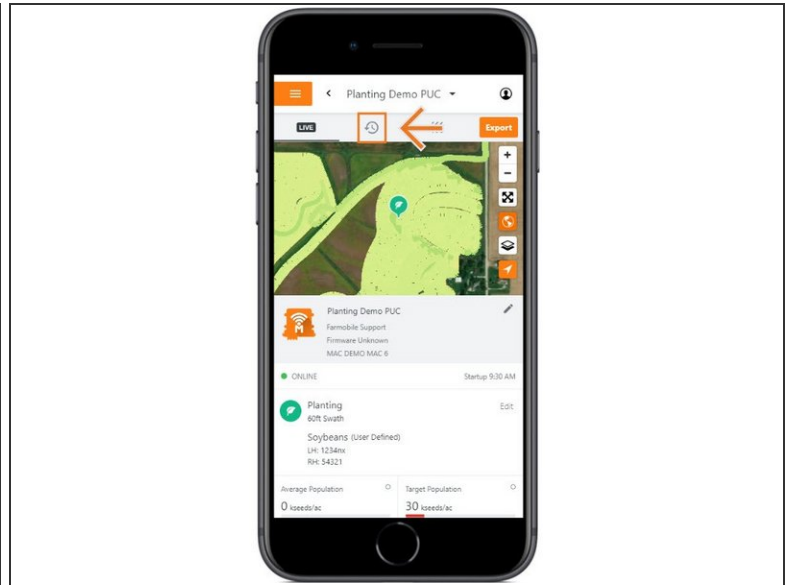
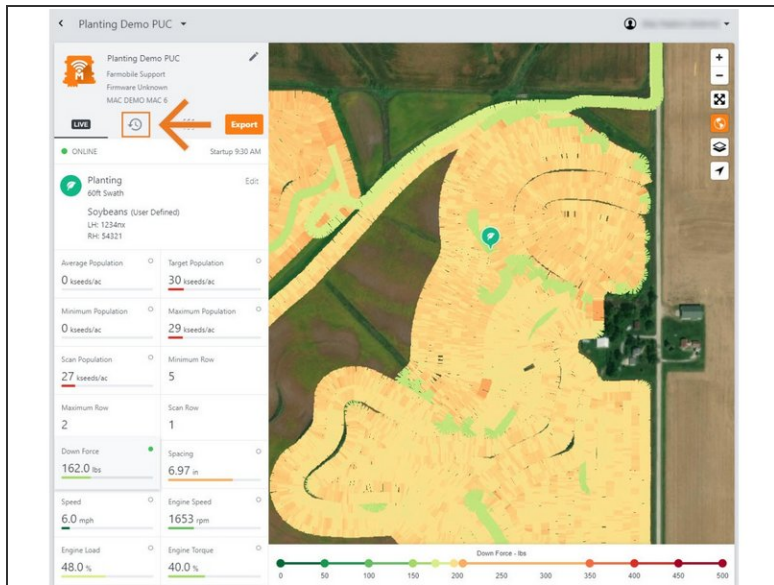
- Select Machines tab from the Farmobile DataEngine platform menu will open the Machines page with all of your Farmobile PUC device listed and displayed on the map.

## Step 2 — Select a Machine



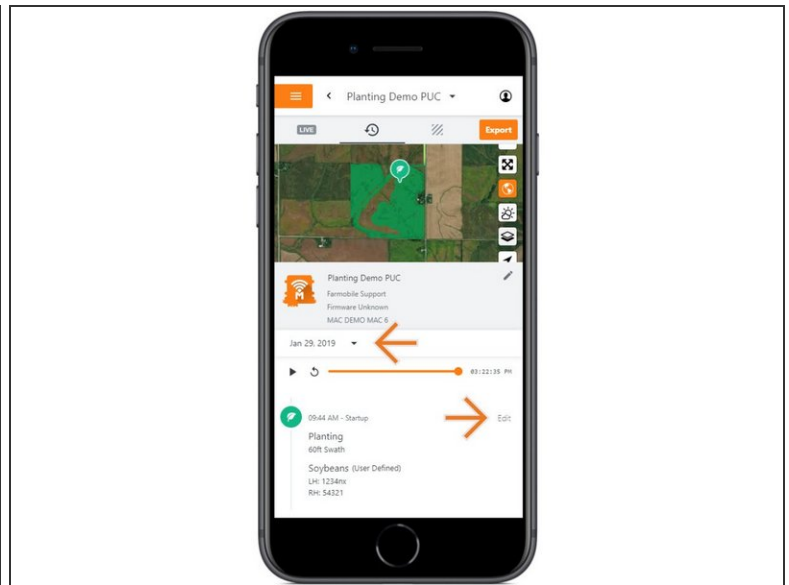
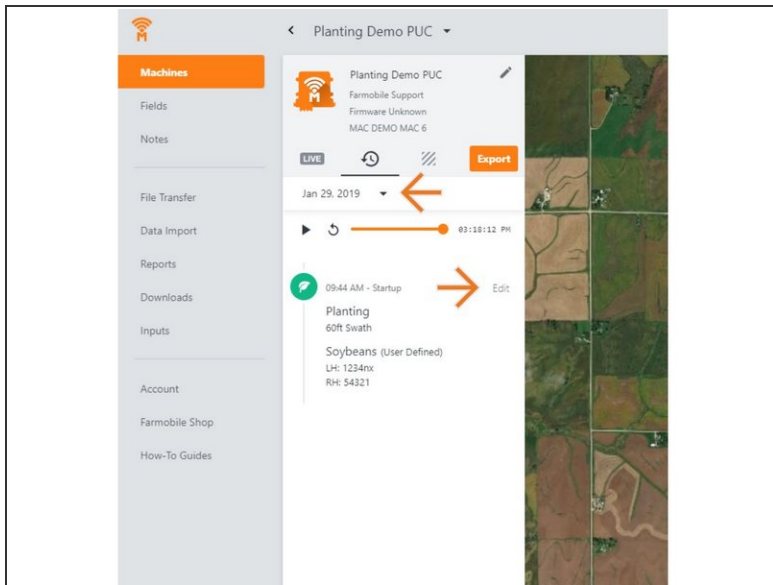
- Select a machine to open the machine details page.

## Step 3 — Select History



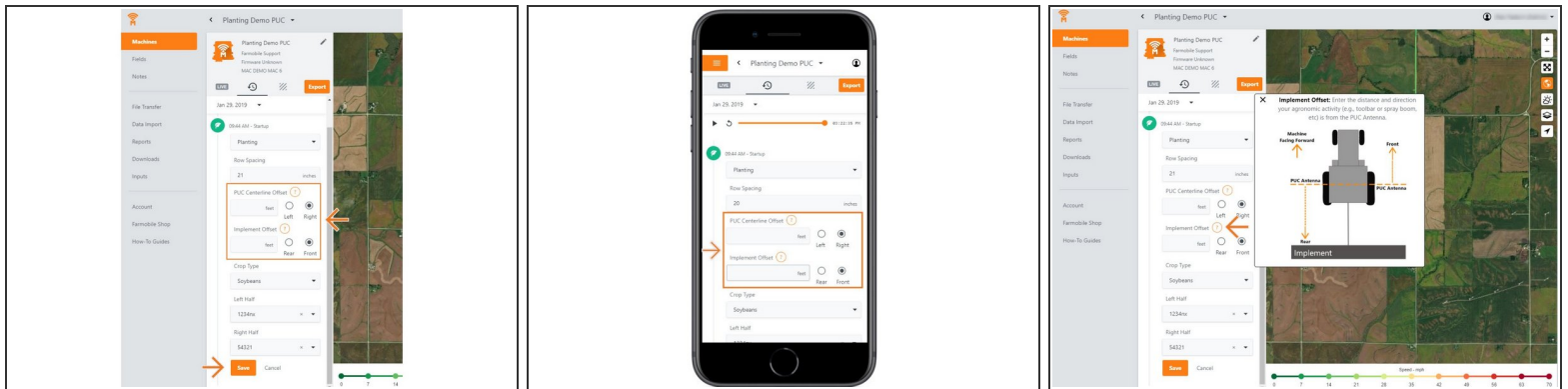
- Select the History tab to open the history page for the selected machine.
- The History page will open with the last active day selected.

## Step 4 — Select Day and Edit



- Select the calendar picker to view a different day. Days containing Machine History are highlighted black.
- Select edit to expand the adjustment options within the required session.
- The available options to adjust vary based on the current activity type.

## Step 5 — Make GPS Offset Adjustment and Save



- Provide your offset values so we can place your agronomic data in the correct location.
- Centerline Offset: Provide the distance (ft.) and direction from the center of the machine the antenna is located.
- Implement Offset: Provide the distance and direction your agronomic activity (e.g., toolbar or spray boom, etc) is from the antenna.
- TIP: To correctly offset your antenna, select the orange question mark to view a diagram.
- Select 'Save' to make the adjustment.