



GPS Offsets

Written By: Support

Machines

Fields

Notes

File Transfer

Data Import

Reports

Downloads

Inputs

Account

Farmobile Shop

How-To Guides

Planting Demo PUC

Farmobile Support
Firmware Unknown
MAC DEMO MAC 6

LIVE

Export

Jan 29, 2019

09:44 AM - Startup

Planting

Row Spacing

21

inches

PUC Centerline Offset

feet

Left

Right

Implement Offset

feet

Rear

Front

Crop Type

Soybeans

Left Half

1234nx

x

Right Half

54321

x

Save

Cancel

Machine Facing Forward

Front

PUC Antenna

PUC Antenna

Rear

Implement

Implement Offset: Enter the distance and direction your agronomic activity (e.g., toolbar or spray boom, etc) is from the PUC Antenna.

Speed - mph

0

7

14

21

28

35

42

49

56

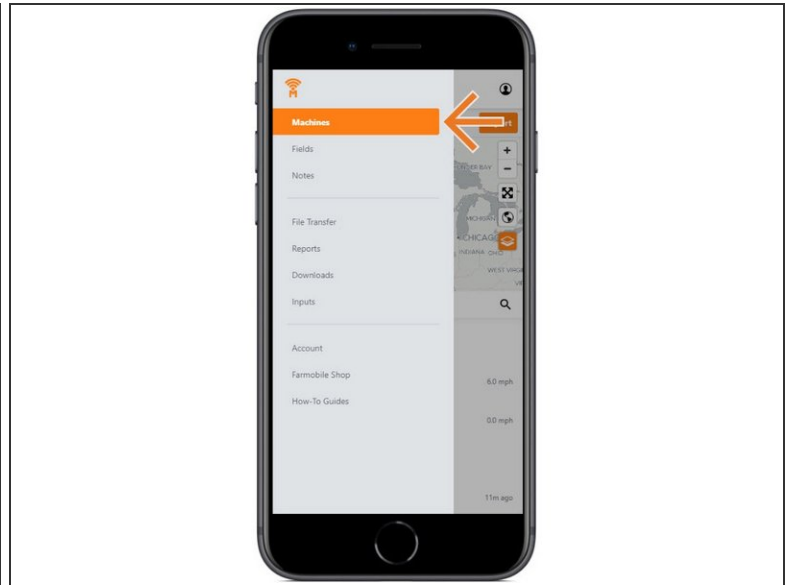
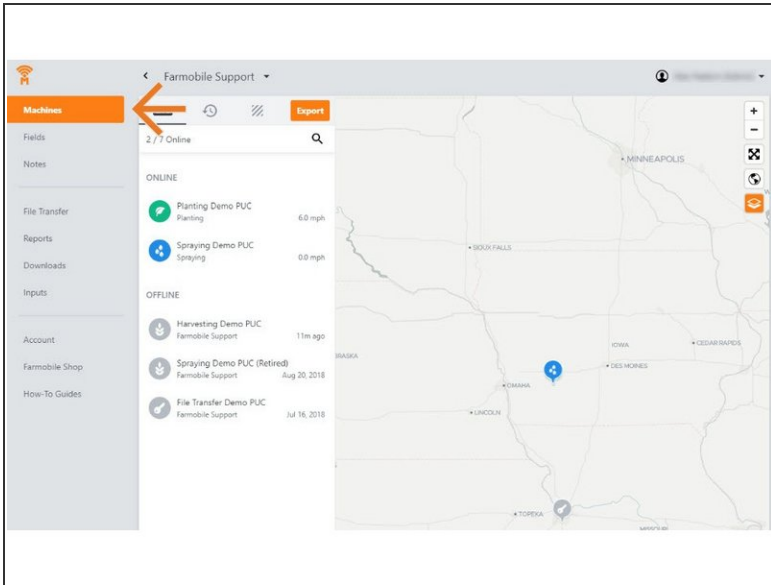
63

70

INTRODUCTION

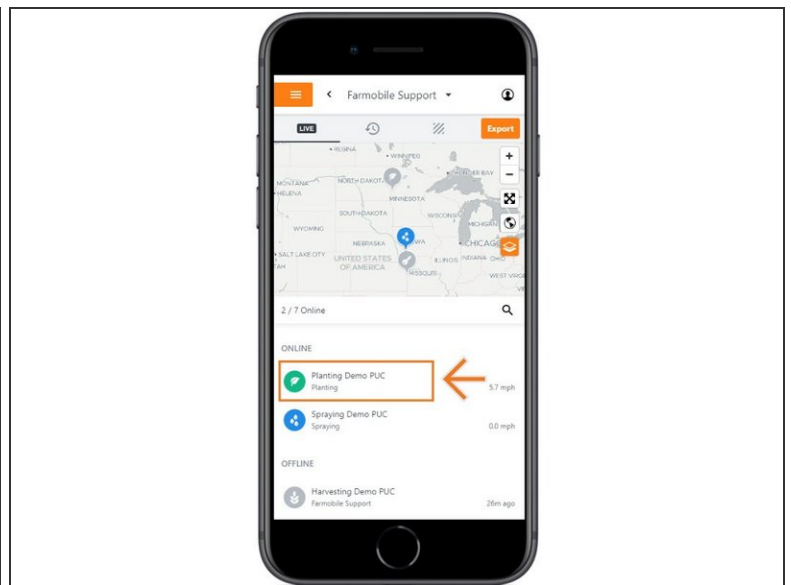
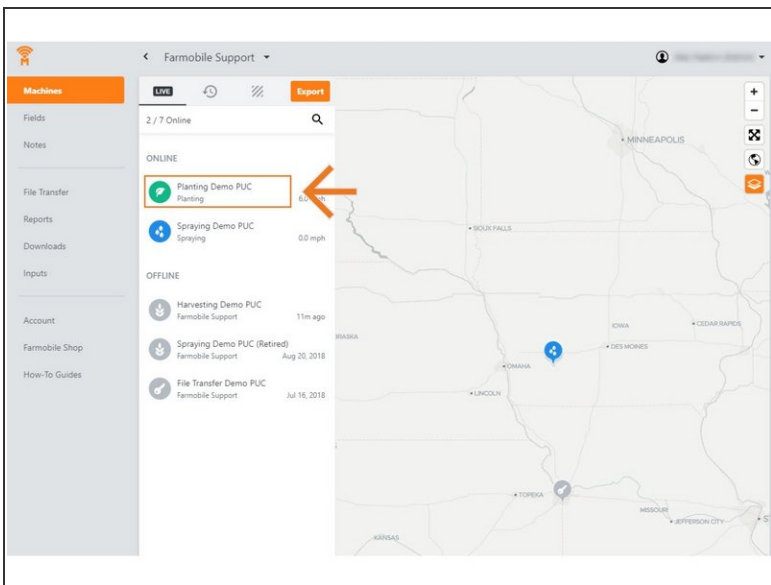
- History Machine Adjustments are only available at the Machine level.
- GPS Offset Adjustments are available for all activity types.
- GPS Offset Adjustments carry forward to the end of the year or up to the next user-entered GPS Offset adjustment.
 - Per 'Activity' type.
 - Per Farmobile PUC™ device.
- To place your agronomic data at the right location, the following offsets are available:
 - Antenna Centerline Offset: If the Farmobile PUC™ device antenna is not located directly in the center of the machine, provide the distance (ft.) and direction from the machine centerline.
 - Implement Offset: Enter the distance and direction your agronomic activity (e.g., toolbar or spray boom, etc) is from the Farmobile PUC device antenna.

Step 1 — Select Machines from the Farmobile DataEngineSM Platform



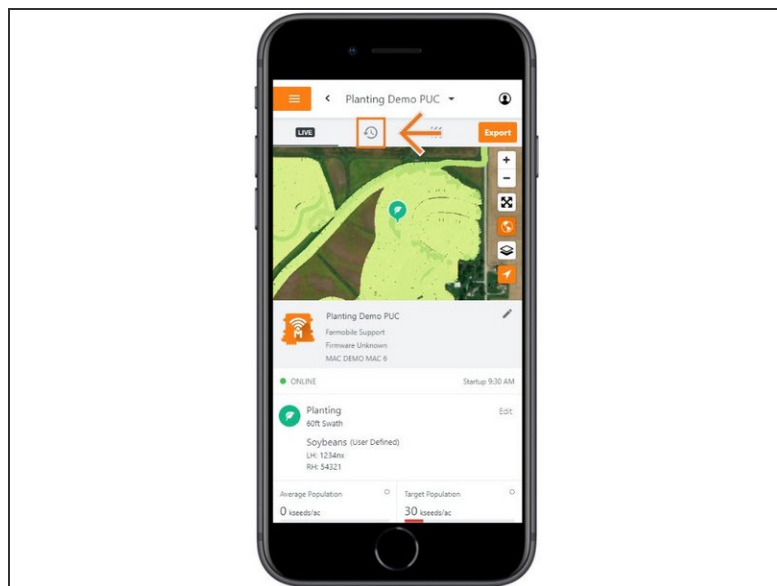
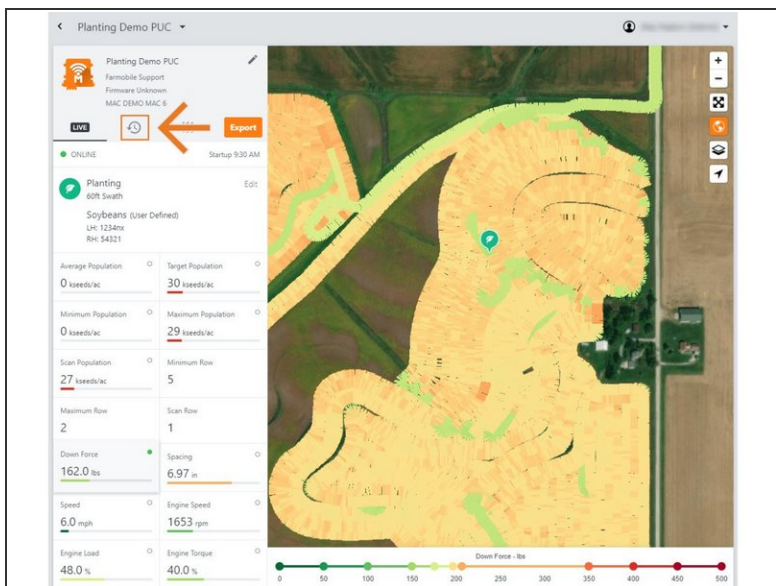
- Select Machines tab from the Farmobile DataEngine platform menu will open the Machines page with all of your Farmobile PUC device listed and displayed on the map.

Step 2 — Select a Machine



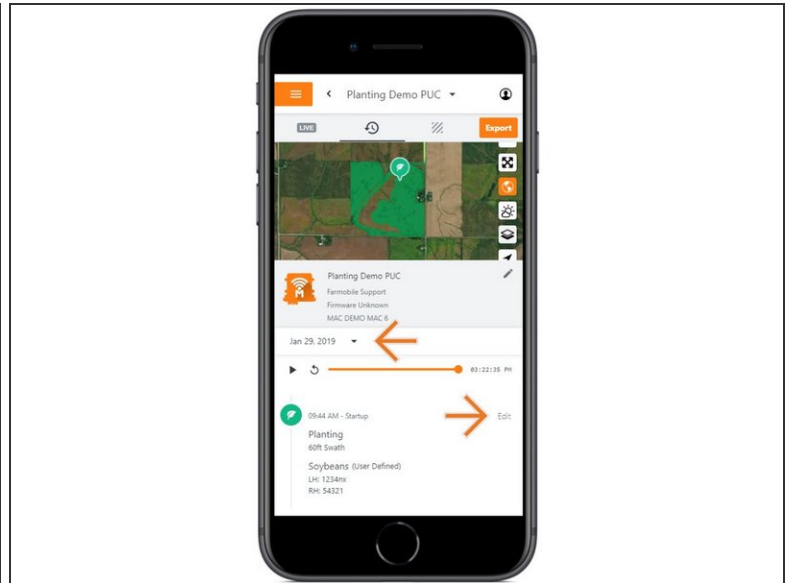
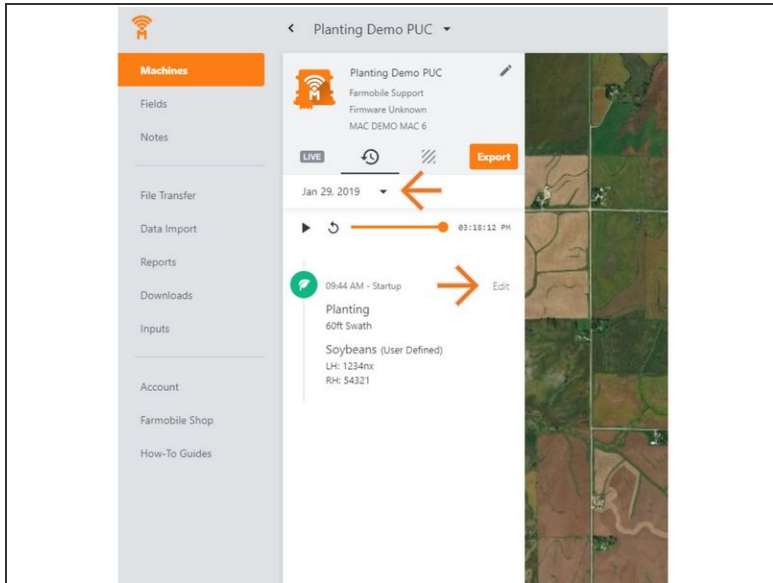
- Select a machine to open the machine details page.

Step 3 — Select History



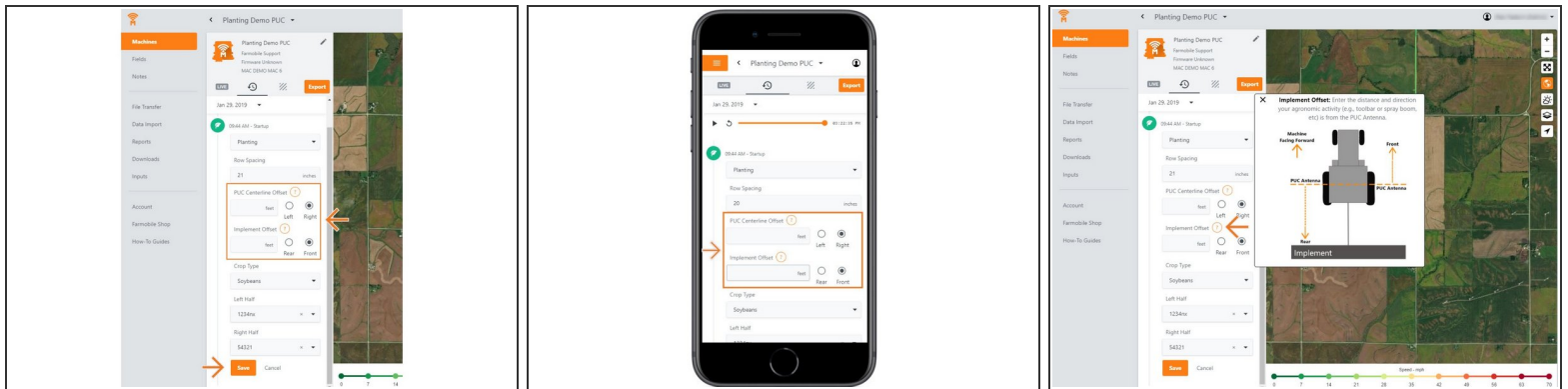
- Select the History tab to open the history page for the selected machine.
- The History page will open with the last active day selected.

Step 4 — Select Day and Edit



- Select the calendar picker to view a different day. Days containing Machine History are highlighted black.
- Select edit to expand the adjustment options within the required session.
- The available options to adjust vary based on the current activity type.

Step 5 — Make GPS Offset Adjustment and Save



- Provide your offset values so we can place your agronomic data in the correct location.
- Centerline Offset: Provide the distance (ft.) and direction from the center of the machine the antenna is located.
- Implement Offset: Provide the distance and direction your agronomic activity (e.g., toolbar or spray boom, etc) is from the antenna.
- TIP: To correctly offset your antenna, select the orange question mark to view a diagram.
- Select 'Save' to make the adjustment.