



GPS Offsets

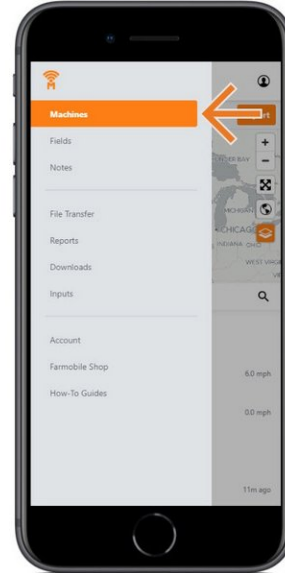
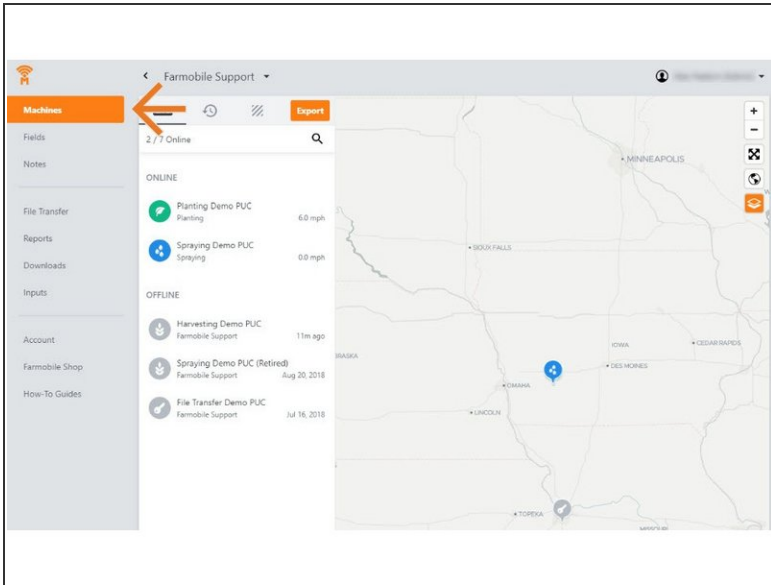
Written By: Support

The screenshot displays the Farmobile app's "Planting Demo PUC" screen. On the left is a sidebar menu with options: Machines, Fields, Notes, File Transfer, Data Import, Reports, Downloads, Inputs, Account, Farmobile Shop, and How-To Guides. The main area shows a top header with the Farmobile logo, a "LIVE" indicator, a refresh icon, and an "Export" button. Below this is a date selector set to "Jan 29, 2019". The central configuration panel includes a "Planting" dropdown, "Row Spacing" set to 21 inches, "PUC Centerline Offset" (Left/Right), "Implement Offset" (Rear/Front), "Crop Type" set to Soybeans, and "Left Half" (1234nx) and "Right Half" (54321) fields. A "Save" button is at the bottom. A modal window titled "Implement Offset" is open, showing a diagram of a machine with the PUC antenna at the rear. It explains that the offset is the distance and direction from the PUC antenna to the implement. The diagram labels "Machine Facing Forward", "Front", "PUC Antenna", "Rear", and "Implement". At the bottom of the screen is a "Speed - mph" gauge ranging from 0 to 70.

INTRODUCTION

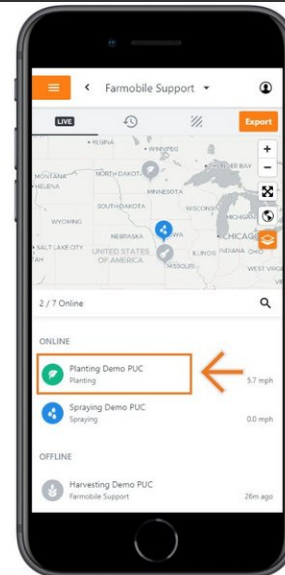
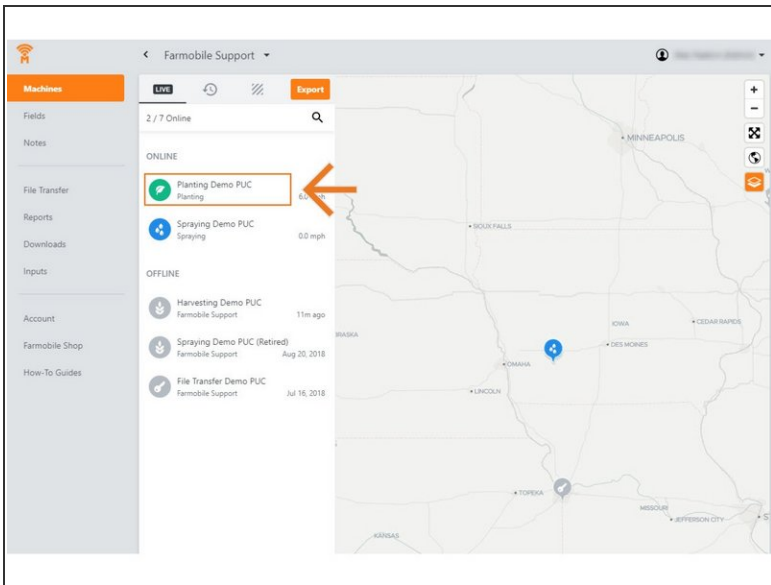
- History Machine Adjustments are only available at the Machine level.
- GPS Offset Adjustments are available for all activity types.
- GPS Offset Adjustments carry forward to the end of the year or up to the next user entered GPS Offset adjustment.
 - Per 'Activity' type.
 - Per PUC.
- To place your agronomic data at the right location, the following offsets are available:
 - PUC Centerline Offset: If the PUC Antenna is not located directly in the center of the machine, provide the distance (ft.) and direction from the machine centerline.
 - Implement Offset: Enter the distance and direction your agronomic activity (e.g., toolbar or spray boom, etc) is from the PUC Antenna.

Step 1 — Select Machines from the Farmobile DataEngineSM Menu



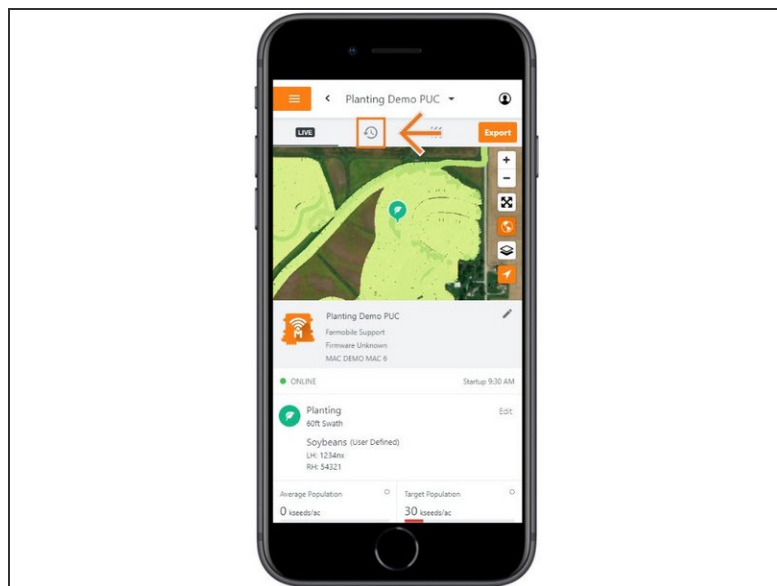
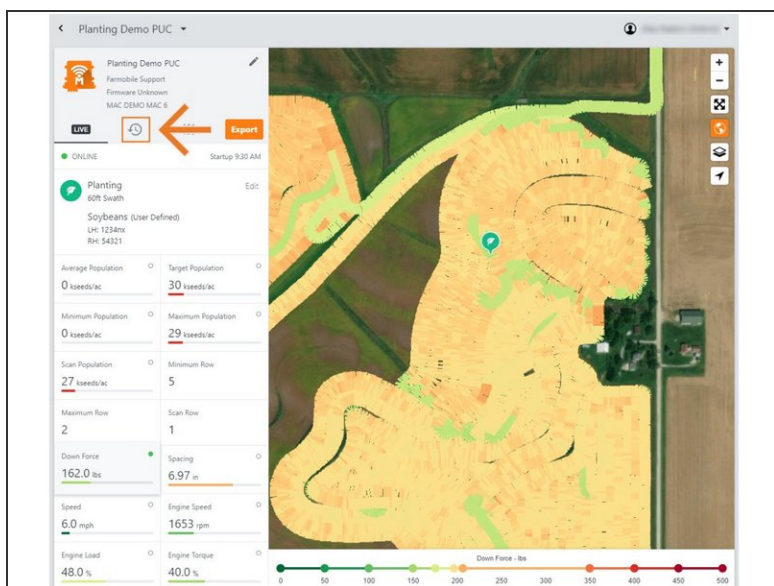
- Selecting Machines from the Farmobile DataEngine menu will open the Machines page with all of your PUCTM listed and displayed on the map.

Step 2 — Select a Machine



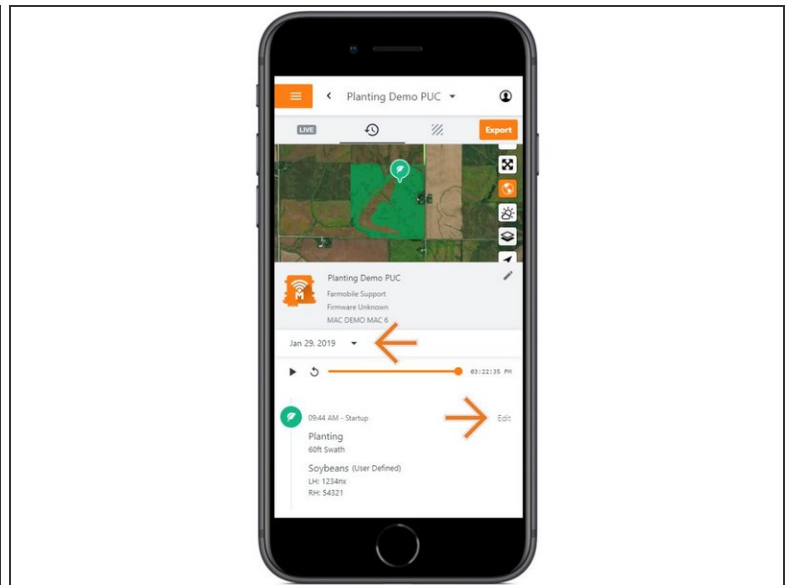
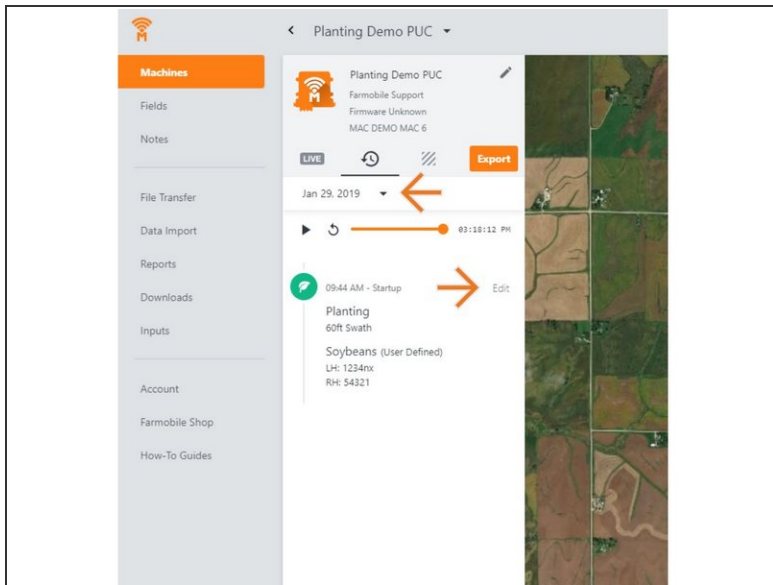
- Select a machine to open the machine details page.

Step 3 — Select History



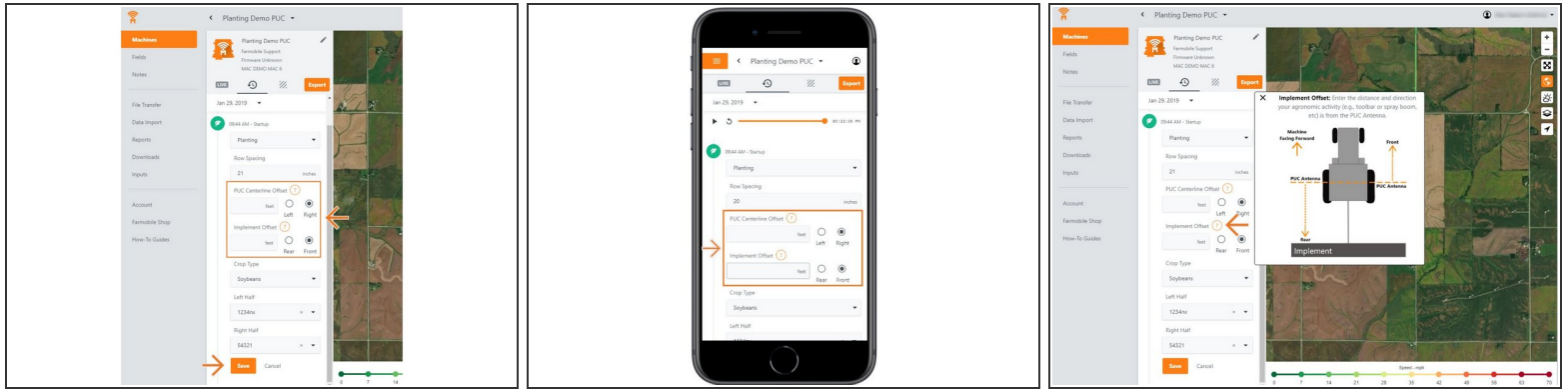
- Select the History tab to open the history page for the selected machine.
- The History page will open with the last active day selected.

Step 4 — Select Day and Edit



- Select the calendar picker to view a different day. Days containing Machine History are highlighted black.
- Select edit to expand the adjustment options within the required session.
- The available options to adjust vary based on the current activity type.

Step 5 — Make GPS Offset Adjustment and Save



- Provide your offset values so we can place your agronomic data in the correct location.
- Centerline Offset: Provide the distance (ft.) and direction from the center of the machine the PUC antenna is located.
- Implement Offset: Provide the distance and direction your agronomic activity (e.g., toolbar or spray boom, etc) is from the PUC Antenna.
- TIP: To correctly offset your PUC Antenna, select the orange question mark to view a diagram.
- Select 'Save' to make the adjustment.