



Edit Activity Type

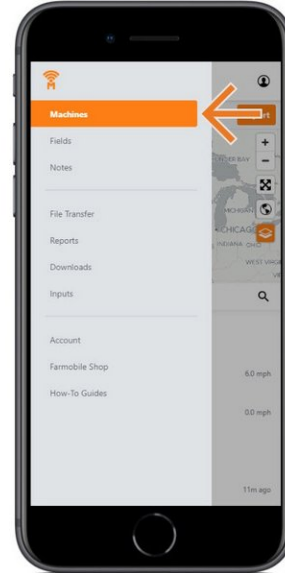
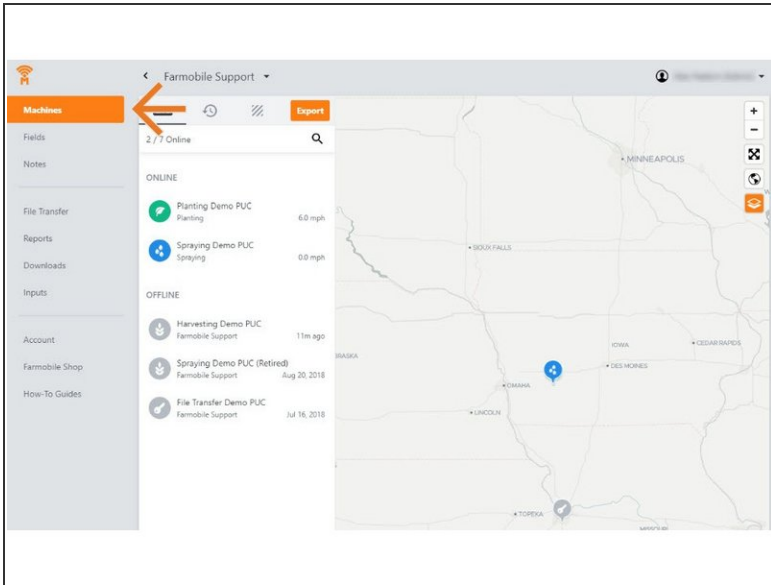
Written By: Support

The screenshot displays the Farmobile app's 'Edit Activity Type' interface. On the left is a sidebar menu with options: Machines, Fields, Notes, File Transfer, Data Import, Reports, Downloads, Inputs, Account, Farmobile Shop, and How-To Guides. The main area is titled 'Planting Demo PUC' and shows a 'LIVE' status with a clock icon and an 'Export' button. Below this, a date selector shows 'Jan 29, 2019'. A green location pin icon is next to the time '09:44 AM - Startup'. A dropdown menu is set to 'Planting', with an orange arrow pointing to it. Below the dropdown are fields for 'Row Spacing' (21 inches), 'PUC Centerline Offset' (feet, with radio buttons for Left and Right), and 'Implement Offset' (feet, with radio buttons for Rear and Front). The 'Crop Type' is set to 'Soybeans'. There are also fields for 'Left Half' (1234nx) and 'Right Half' (54321). At the bottom of the form are 'Save' and 'Cancel' buttons, with an orange arrow pointing to the 'Save' button. The background is a satellite map of a field with a green planting path. A speedometer at the bottom shows 'Speed - mph' with a scale from 0 to 70.

INTRODUCTION

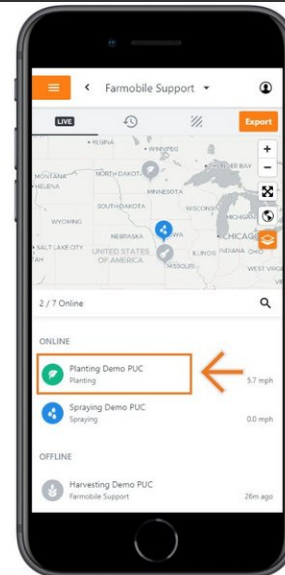
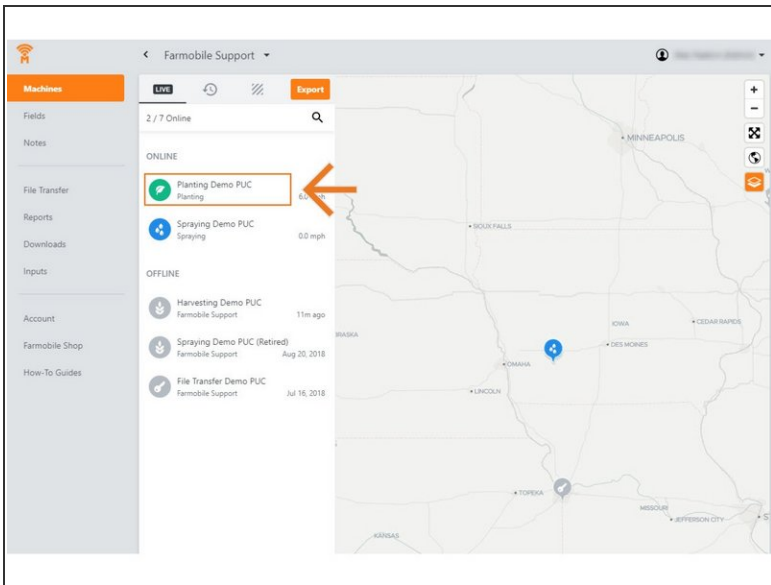
- History Machine Adjustments are only available at the Machine level.
- Activity Adjustments carry forward to the end of the day.
 - Per Farmobile PUC™ device.
- The type of Activity Adjustments you can make depends on the current activity type:
 - Planting
 - Harvesting
 - Spreading
 - Spraying

Step 1 — Select Machines from the Farmobile DataEngineSM Platform



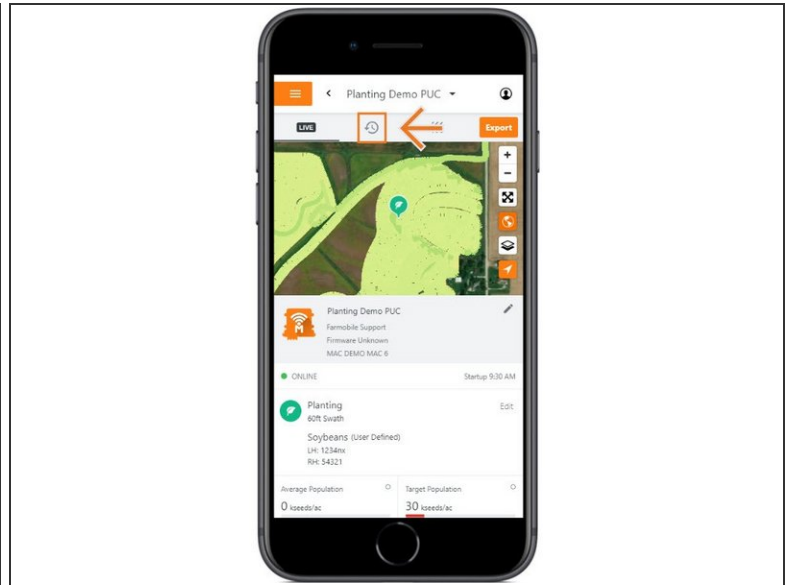
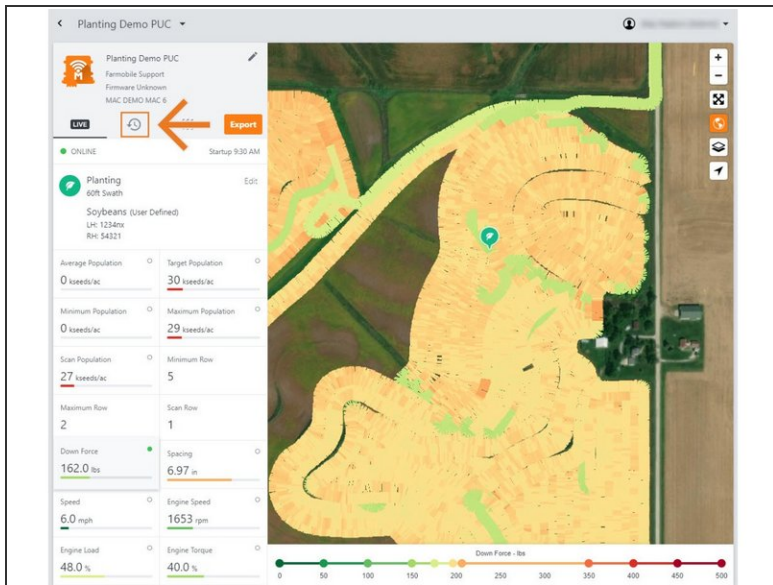
- Selecting Machines from the Farmobile DataEngine platform menu will open the Machines page with all of your Farmobile PUC device listed and displayed on the map.

Step 2 — Select a Machine



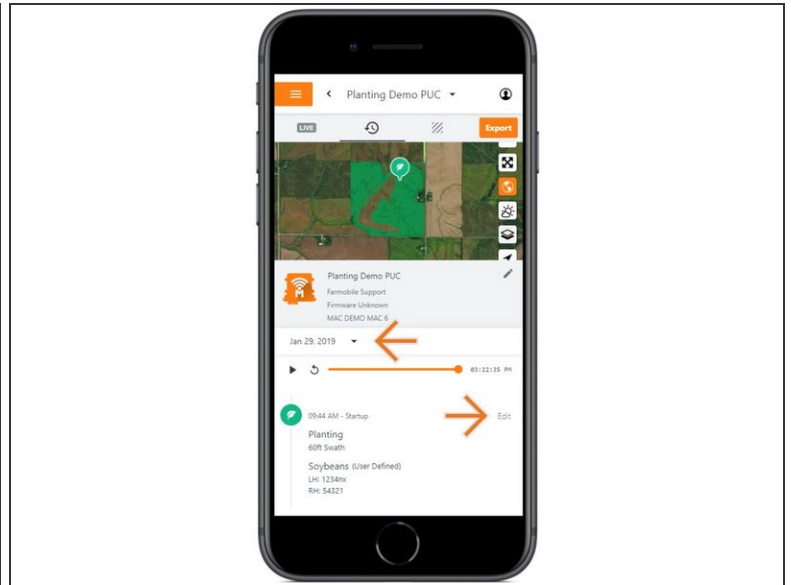
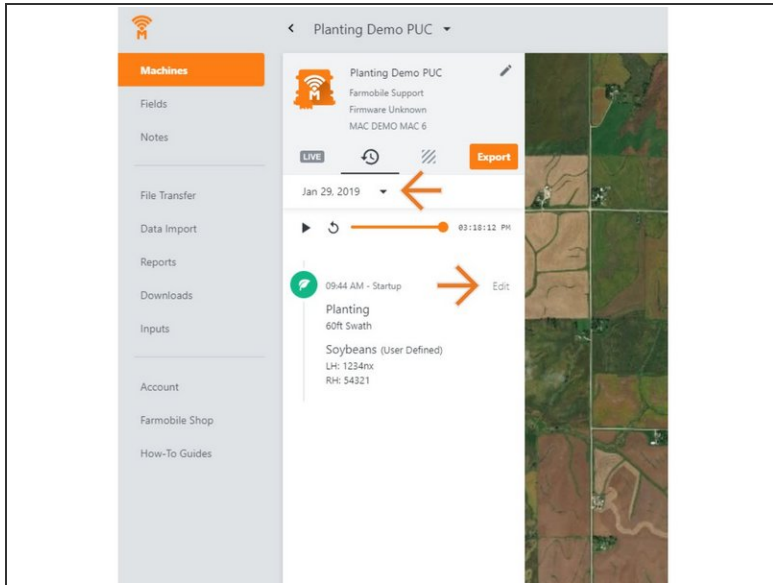
- Select a machine to open the machine details page.

Step 3 — Select History



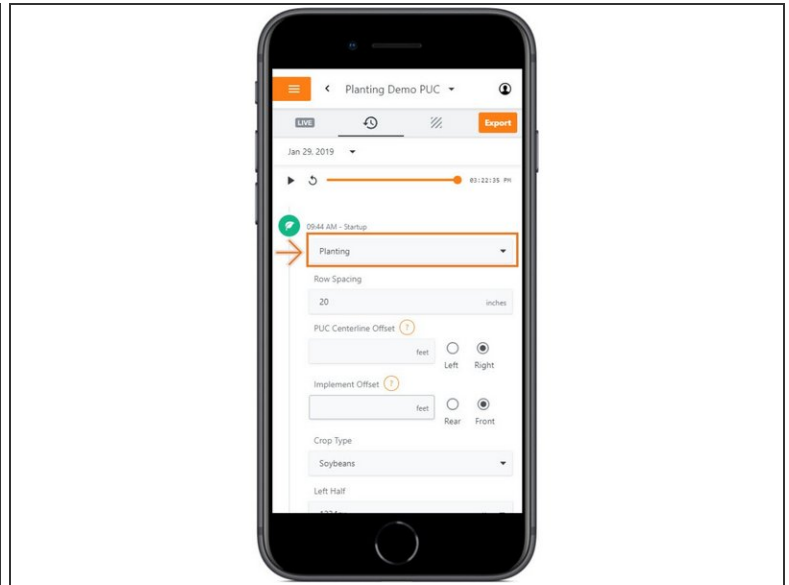
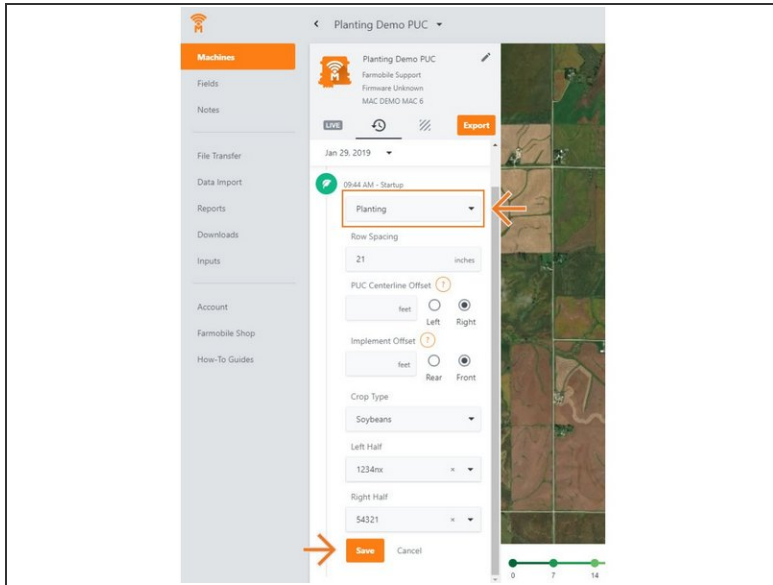
- Select the History tab to open the history page for the selected machine.
- The History page will open with the last active day selected.

Step 4 — Select Day and Edit



- Select the calendar picker to view a different day. Days containing Machine History are highlighted black.
- Select edit to expand the adjustment options within the required session.
- The available options to adjust vary based on the current activity type.

Step 5 — Make Activity Type Adjustment and Save



- Click the 'Activity' drop down menu, and select a different activity type.
- Select 'Save' to make the adjustment.