



# Activity Type

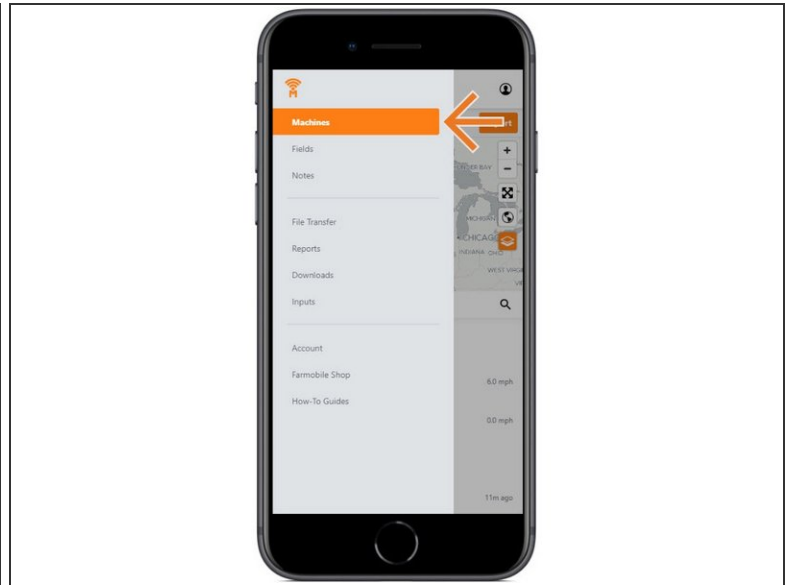
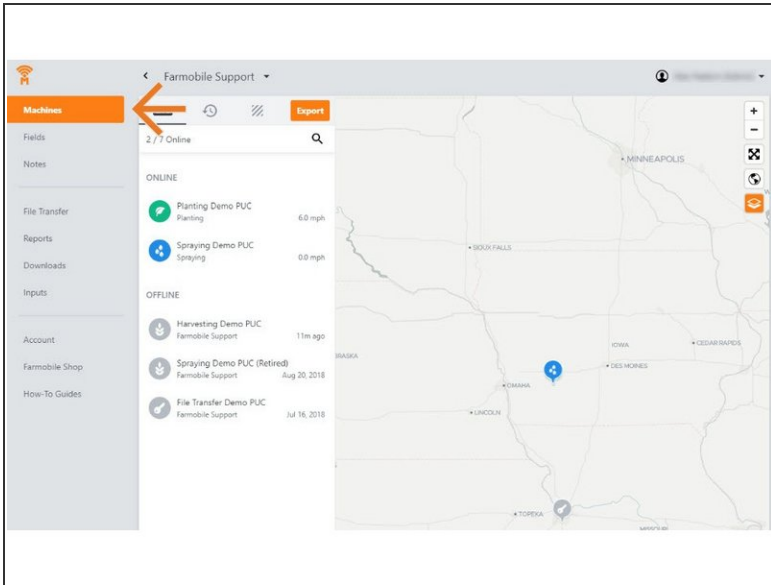
Written By: Support

The screenshot shows the Farmobile app interface for a 'Planting Demo PUC'. On the left is a sidebar with navigation links: Machines, Fields, Notes, File Transfer, Data Import, Reports, Downloads, Inputs, Account, Farmobile Shop, and How-To Guides. The main area is titled 'Planting Demo PUC' and includes a 'LIVE' indicator, a clock icon, and an 'Export' button. Below this is a date selector set to 'Jan 29, 2019' and a time '09:44 AM - Startup'. A dropdown menu for 'Activity Type' is highlighted with an orange box and an arrow pointing to it, showing 'Planting' selected. Below this are various settings: 'Row Spacing' (21 inches), 'PUC Centerline Offset' (Left/Right), 'Implement Offset' (Rear/Front), 'Crop Type' (Soybeans), 'Left Half' (1234nx), and 'Right Half' (54321). A 'Save' button is at the bottom. The right side of the screen shows a satellite map of a field with a green planting path and a speedometer at the bottom ranging from 0 to 70 mph.

## INTRODUCTION

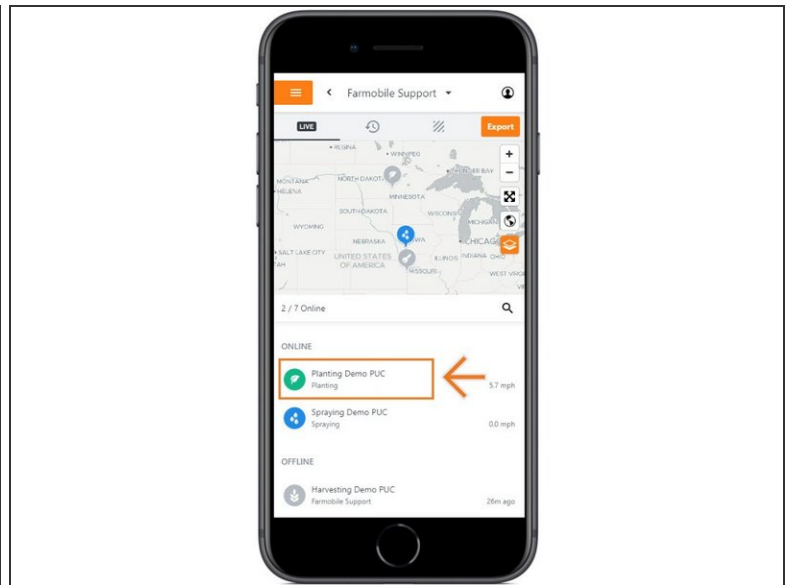
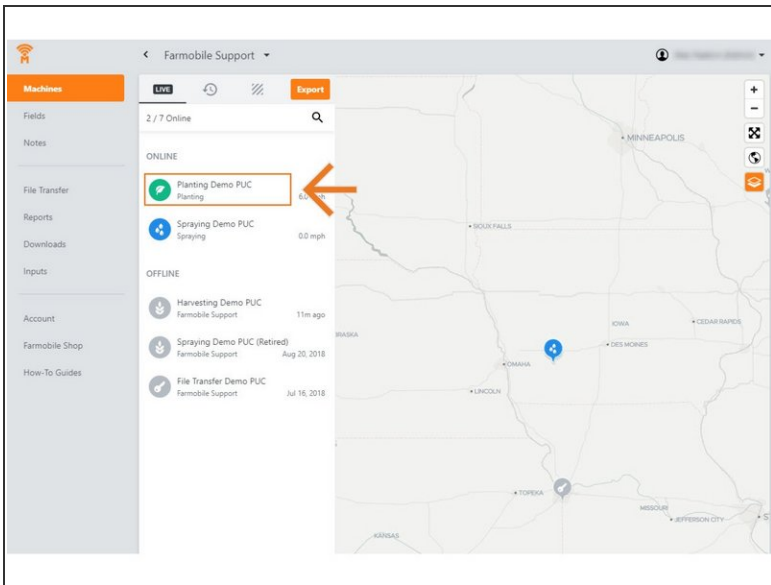
- History Machine Adjustments are only available at the Machine level.
- Activity Adjustments carry forward to the end of the day.
  - Per Farmobile PUC™ device.
- The type of Activity Adjustments you can make depends on the current activity type:
  - Planting
  - Harvesting
  - Spreading
  - Spraying

## Step 1 — Select Machines from the Farmobile DataEngine<sup>SM</sup> Platform



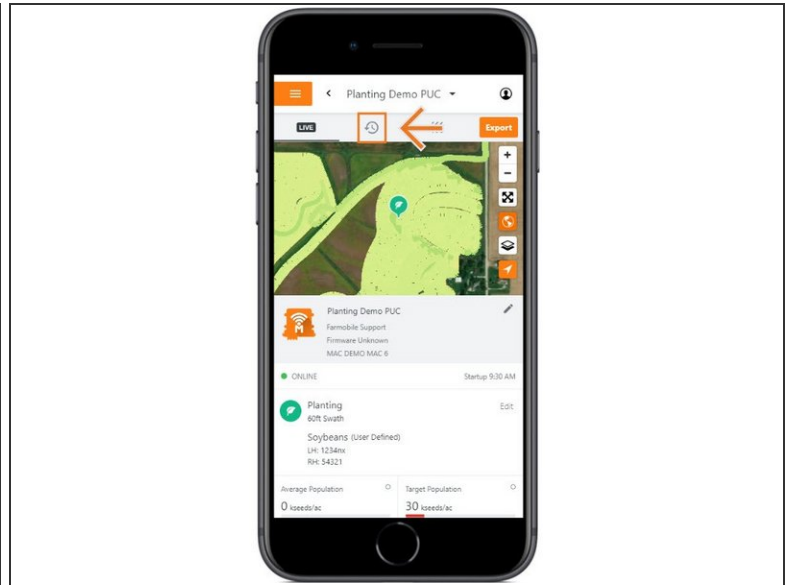
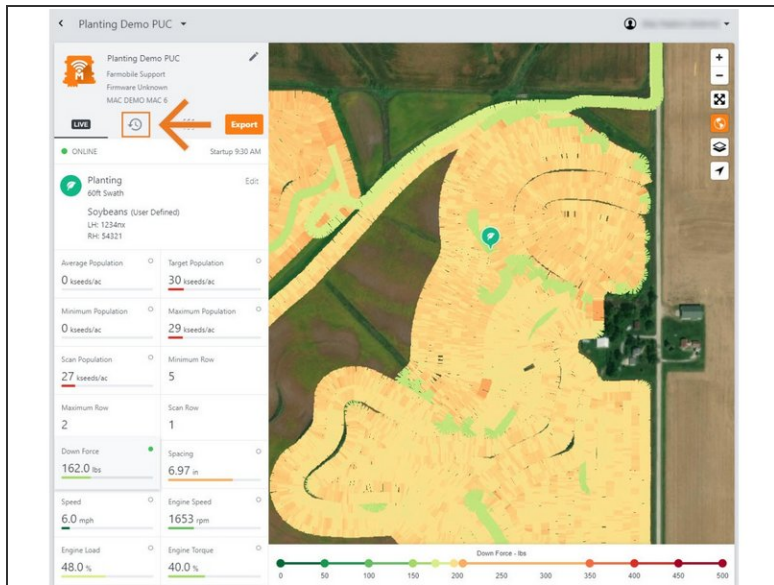
- Selecting Machines from the Farmobile DataEngine platform menu will open the Machines page with all of your Farmobile PUC device listed and displayed on the map.

## Step 2 — Select a Machine



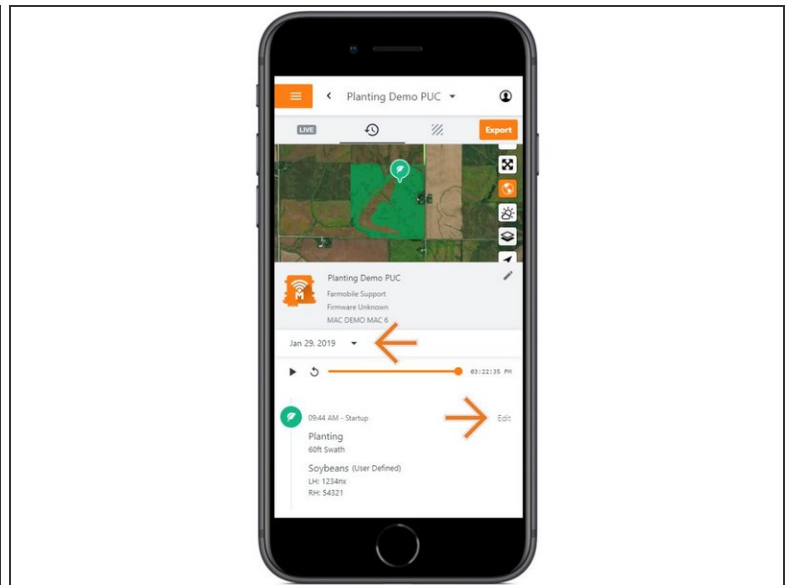
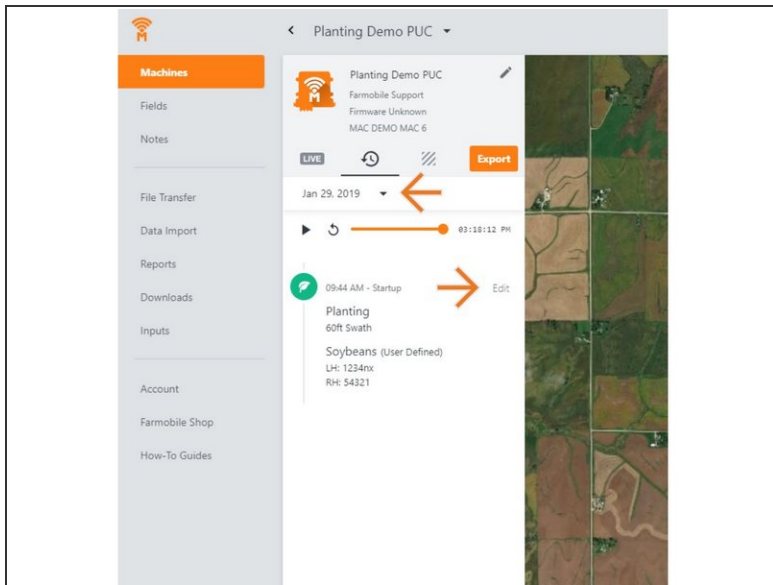
- Select a machine to open the machine details page.

## Step 3 — Select History



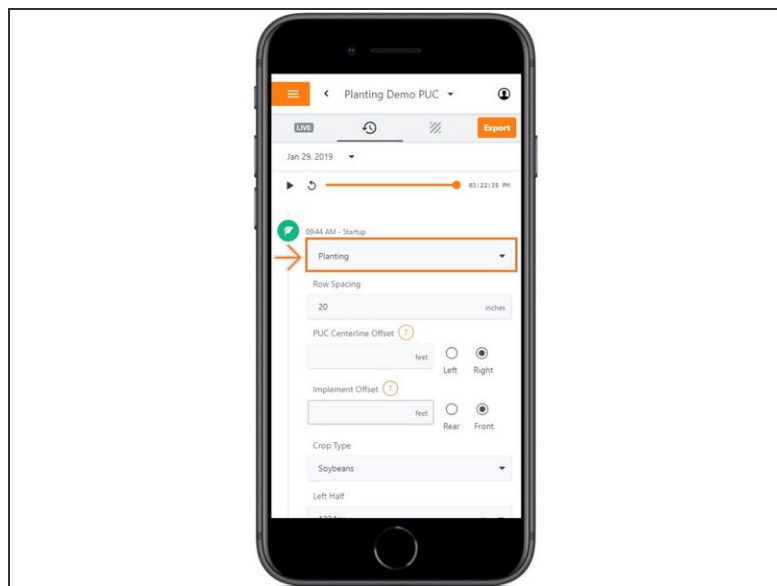
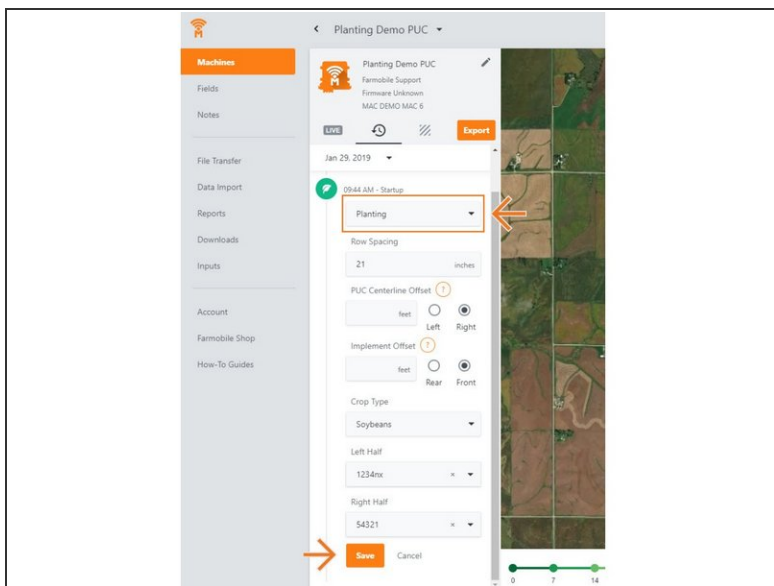
- Select the History tab to open the history page for the selected machine.
- The History page will open with the last active day selected.

## Step 4 — Select Day and Edit



- Select the calendar picker to view a different day. Days containing Machine History are highlighted black.
- Select edit to expand the adjustment options within the required session.
- The available options to adjust vary based on the current activity type.

## Step 5 — Make Activity Type Adjustment and Save



- Click the 'Activity' drop down menu, and select a different activity type.
- Select 'Save' to make the adjustment.