



# Planting - Seed Variety

Written By: Support

The screenshot displays the Farmobile Planting Demo PUC interface. On the left is a configuration panel, and on the right is a satellite map of a field with a yellow planting path and a green location pin.

**Planting Demo PUC**

Farmobile Support  
Firmware Unknown  
MAC DEMO MAC 6

**LIVE** **Export**

● ONLINE Startup 9:09 AM

Planting

Swath Width  
60 feet

Row Spacing  
10 inches

PUC Centerline Offset feet ☐ Left ☒ Right

Implement Offset feet ☐ Rear ☒ Front

Crop Type  
Soybeans

Left Half  
1234rx

Right Half  
54321

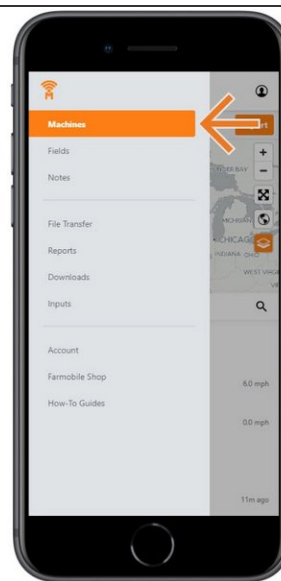
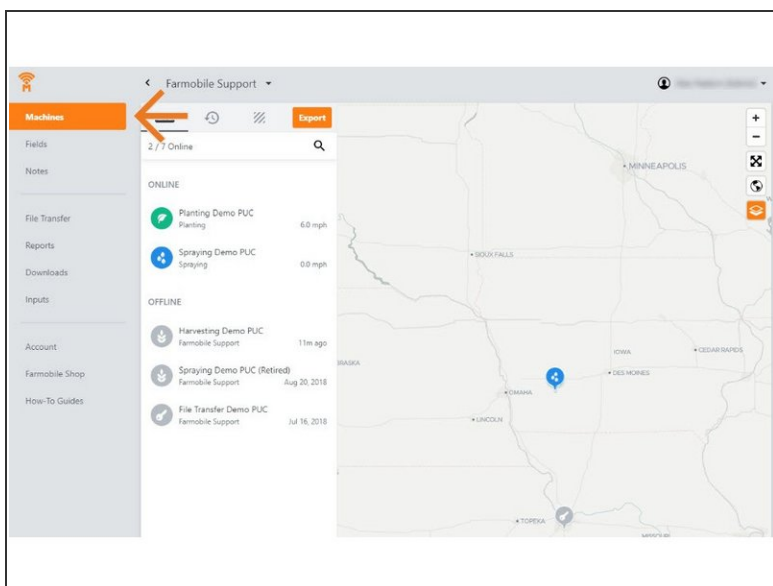
☐ Now ☒ Startup

**Save** Cancel

## INTRODUCTION

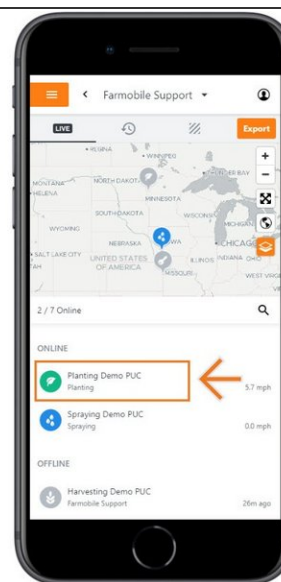
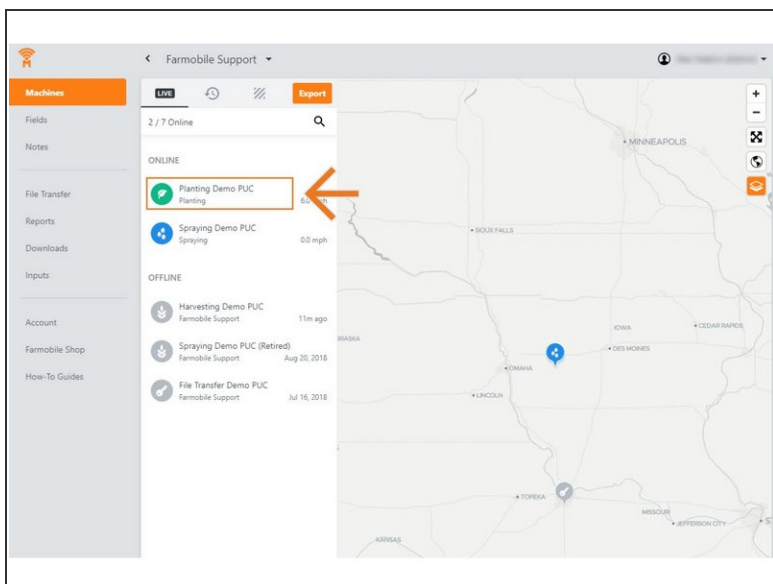
- Live Machine Adjustments are only available at the Machine level.
- Seed Variety Adjustments are only available for Planting activity.
- Seed Variety Adjustments carry forward to the end of the year or up to the next user-entered seed variety adjustment.
  - Per Farmobile PUC™ device
- You must define a crop type to make a seed variety adjustment.
- You can add a seed variety for both the Left Half and Right Half.
- The list of available seed varieties to add is controlled by what Inputs (see Input guides) you have added to the system.
  - By Crop Type & Year

## Step 1 — Select Machines from the Farmobile DataEngine<sup>SM</sup> Platform



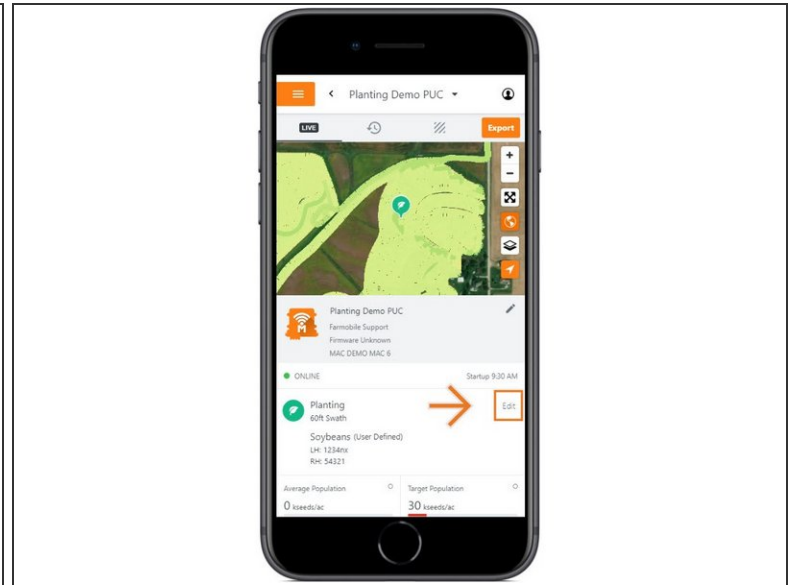
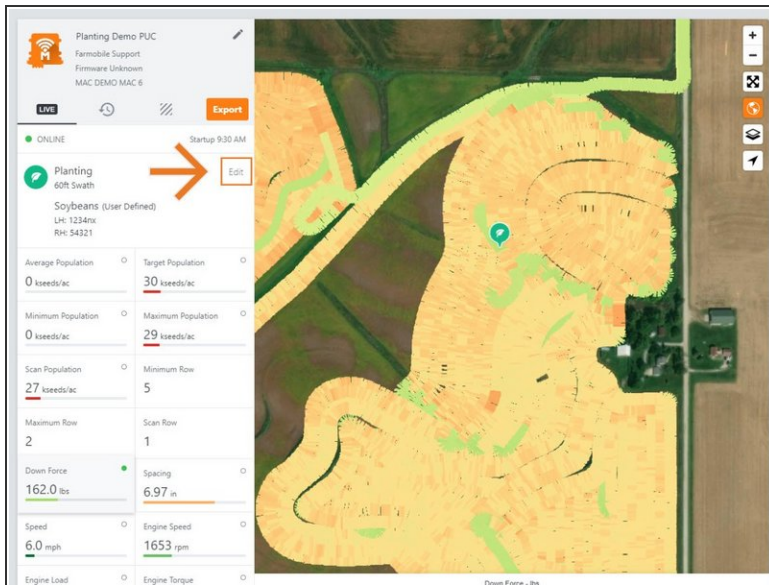
- Selecting Machines from the Farmobile DataEngine platform menu will open the Machines page with all of your Farmobile PUC device listed and displayed on the map.

## Step 2 — Select a Machine



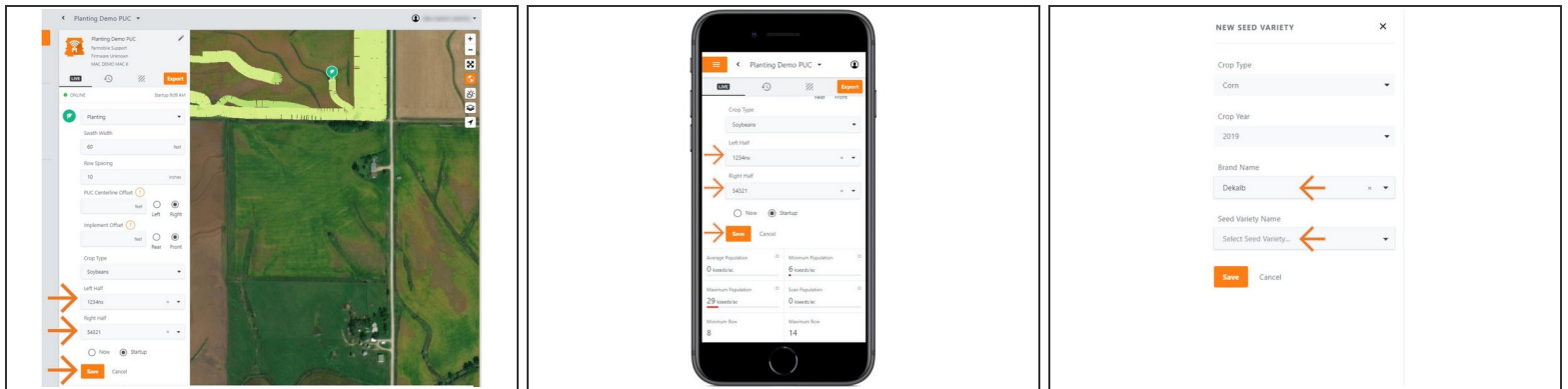
- Select a machine to open the Machine details page.

## Step 3 — Select Edit



- Select edit to expand the adjustment options.
- The available options to adjust vary based on the current activity type.

## Step 4 — Make Seed Variety Adjustment



- To make a Seed Variety adjustment, you must have a Crop Type defined first.
- Once a Crop Type is selected, use the Left Half and Right Half drop down menus to select the correct seed variety.
- The Seed Variety list is populated by previously created Inputs (see Input guide).
- If needed, you can select 'Add Seed Variety' to open the New Seed Variety menu.
  - Select the Brand Name & Seed Variety Name and select 'Save'.
  - The new variety will be added to your Left & Right Half drop down menus.
- Select 'Now' or 'Startup' to apply the adjustment at the correct time.
- Select 'Save' to make the adjustment.