



# Planting - Seed Variety

Written By: Support

The screenshot displays the Farmobile Planting Demo PUC interface. On the left is a configuration panel, and on the right is a satellite map of a field with a yellow planting path and a green location pin.

**Configuration Panel (Left):**

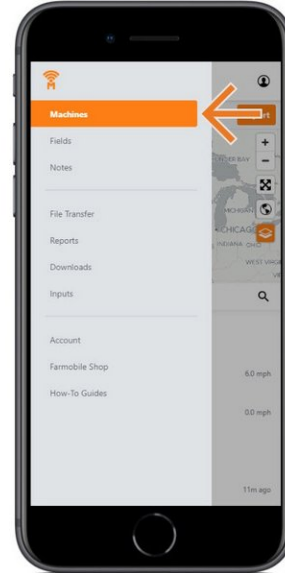
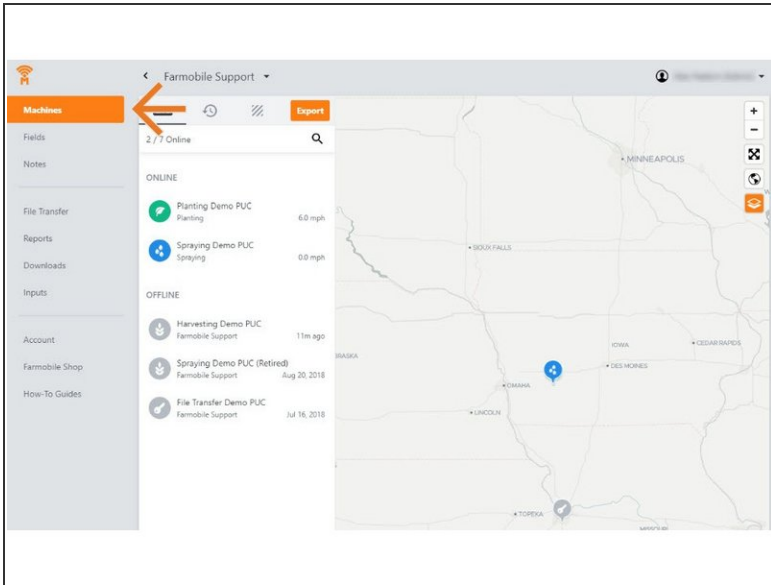
- Header:** Planting Demo PUC (with edit icon), Farmobile Support, Firmware Unknown, MAC DEMO MAC 6.
- Buttons:** LIVE, Export.
- Status:** ONLINE, Startup 9:09 AM.
- Planting Mode:** Planting (dropdown).
- Swath Width:** 60 feet.
- Row Spacing:** 10 inches.
- PUC Centerline Offset:** ? feet, Left (radio), Right (radio).
- Implement Offset:** ? feet, Rear (radio), Front (radio).
- Crop Type:** Soybeans (dropdown).
- Left Half:** 1234rx (dropdown).
- Right Half:** 54321 (dropdown).
- Timing:** Now (radio), Startup (radio).
- Buttons:** Save, Cancel.

**Map (Right):** A satellite view of a field with a yellow planting path and a green location pin. Map controls (zoom in, zoom out, pan, etc.) are visible on the right side of the map.

## INTRODUCTION

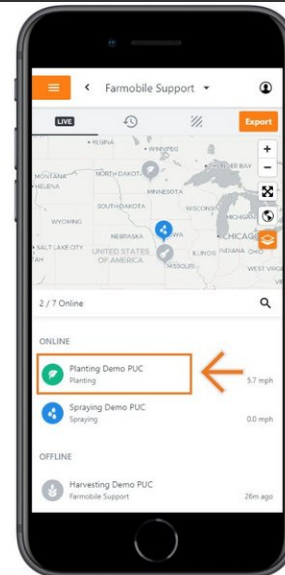
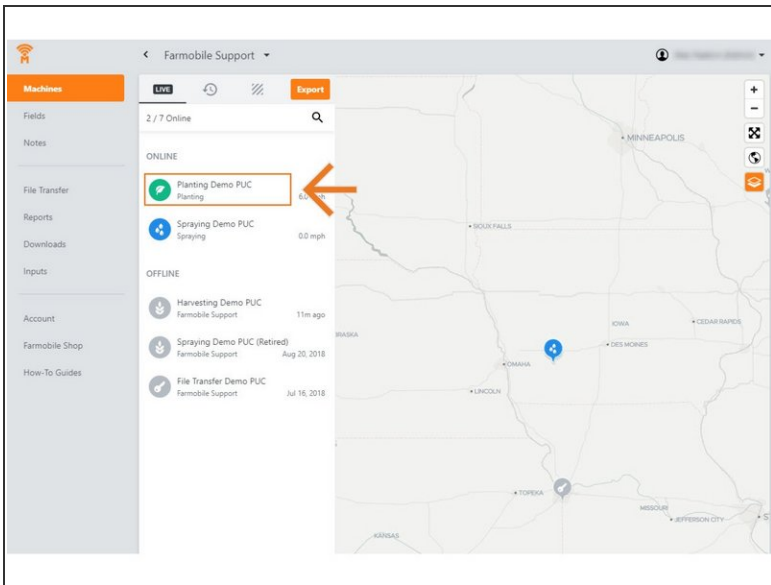
- Live Machine Adjustments are only available at the Machine level.
- Seed Variety Adjustments are only available for Planting activity.
- Seed Variety Adjustments carry forward to the end of the year or up to the next user entered seed variety adjustment.
  - Per PUC
- You must define a crop type to make a seed variety adjustment.
- You can add a seed variety for both the Left Half and Right Half.
- The list of available seed varieties to add is controled by what Inputs (see Input guides) you have added to the system.
  - By Crop Type & Year

## Step 1 — Select Machines from the Farmobile DataEngine<sup>SM</sup> Menu



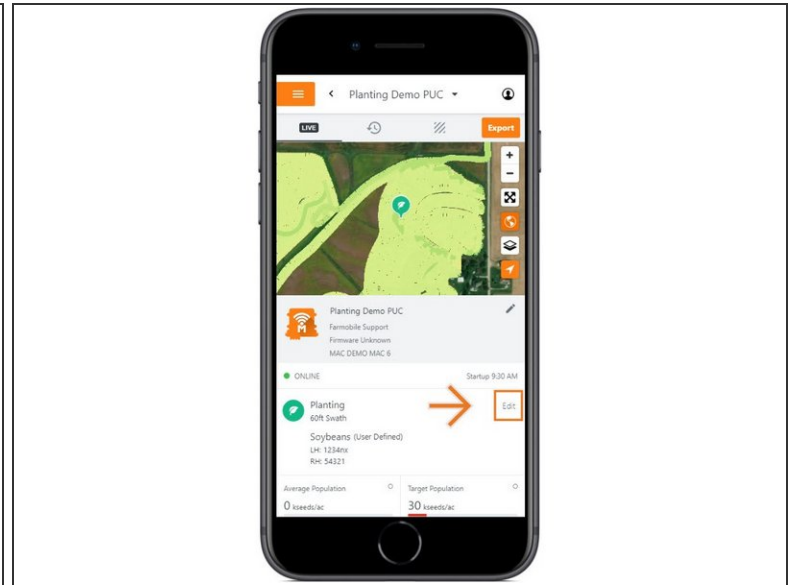
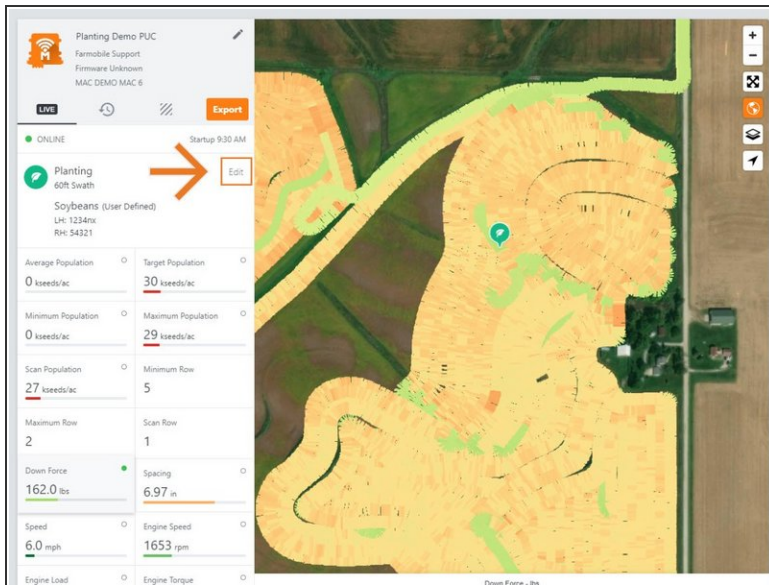
- Selecting Machines from the Farmobile DataEngine menu will open the Machines page with all of your PUC<sup>TM</sup> listed and displayed on the map.

## Step 2 — Select a Machine



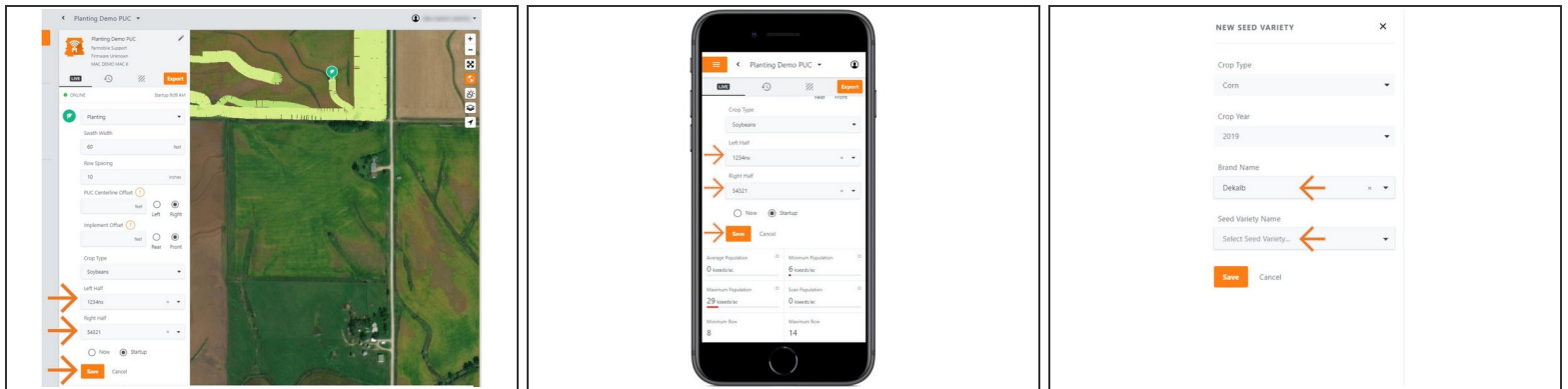
- Select a machine to open the Machine details page.

## Step 3 — Select Edit



- Select edit to expand the adjustment options.
- The available options to adjust vary based on the current activity type.

## Step 4 — Make Seed Variety Adjustment and Save



- To make a Seed Variety adjustment, you must have a Crop Type defined first.
- Once a Crop Type is selected, use the Left Half and Right Half drop down menus to select the correct seed variety.
- The Seed Variety list is populated by previously created Inputs (see Input guide).
- If needed, you can select 'Add Seed Variety' to open the New Seed Variety menu.
  - Select the Brand Name & Seed Variety Name and select 'Save'.
  - The new variety will be added to your Left & Right Half drop down menus.
- Select 'Now' or 'Startup' to apply the adjustment at the correct time.
- Select 'Save' to make the adjustment.