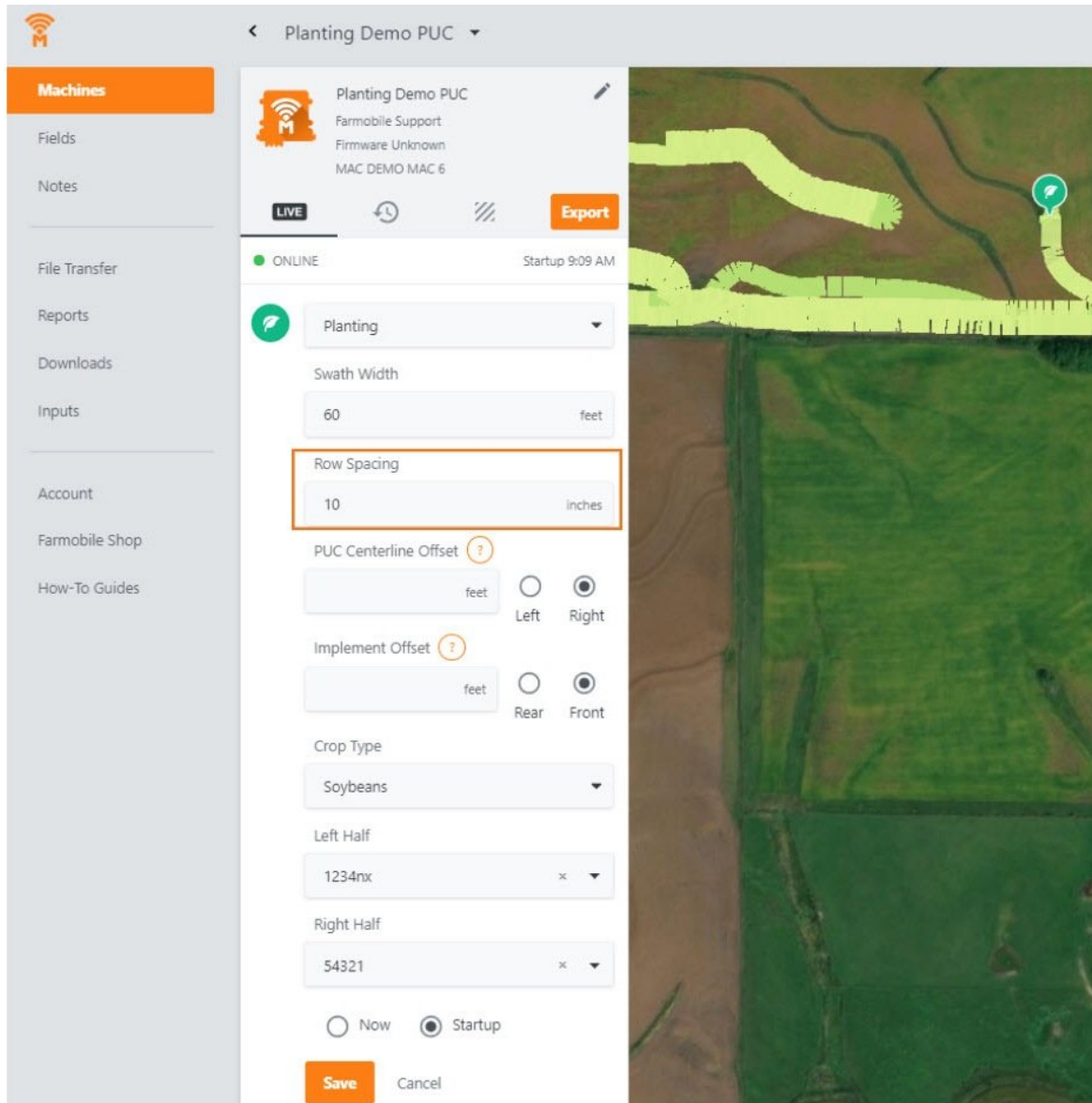




Adjust Planter Row Spacing

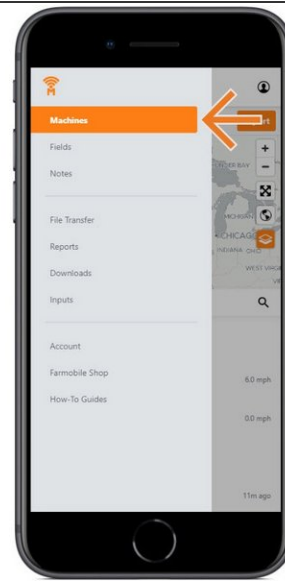
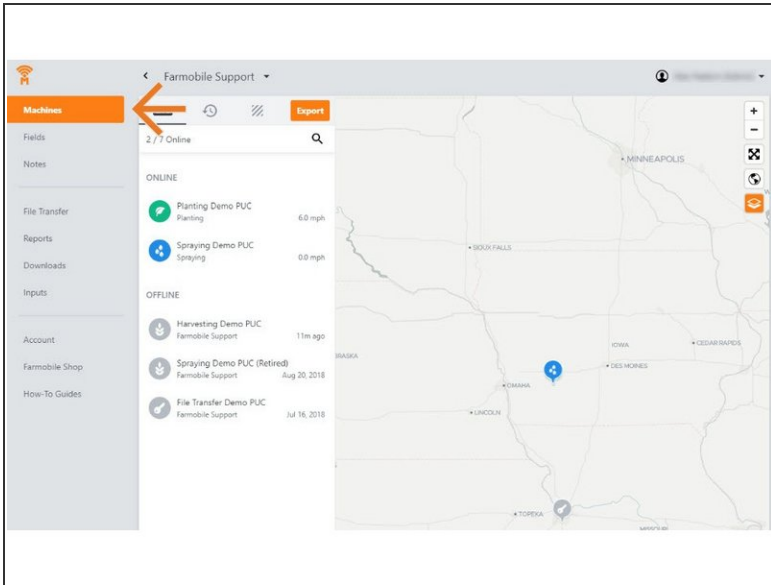
Written By: Support



INTRODUCTION

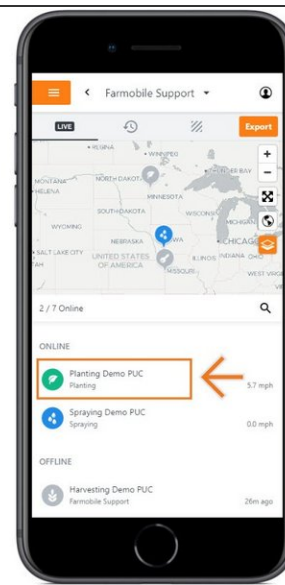
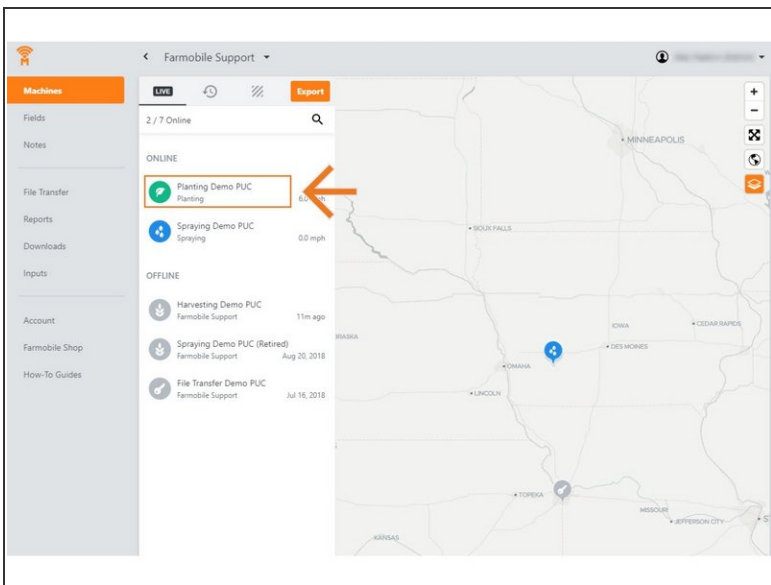
- Live Machine Adjustments are only available at the Machine level.
- Row Spacing Adjustments are only available for Planting activity.
- Row Spacing Adjustments carry forward to the end of the year or up to the next user-entered row spacing adjustment.
 - Per Farmobile PUC™ device.
- To increase the accuracy of your average population values, provide in inches the exact row spacing of your planter.
 - Default value = 30"

Step 1 — Select Machines from the Farmobile DataEngineSM Platform



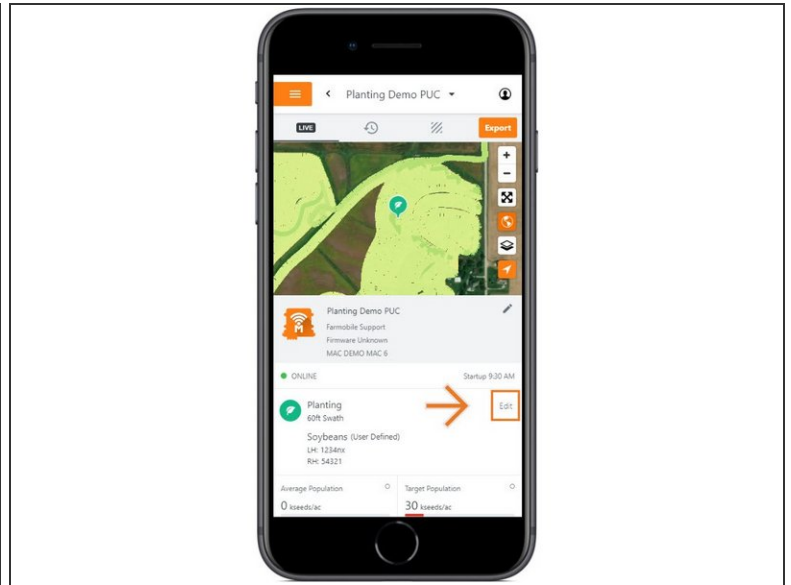
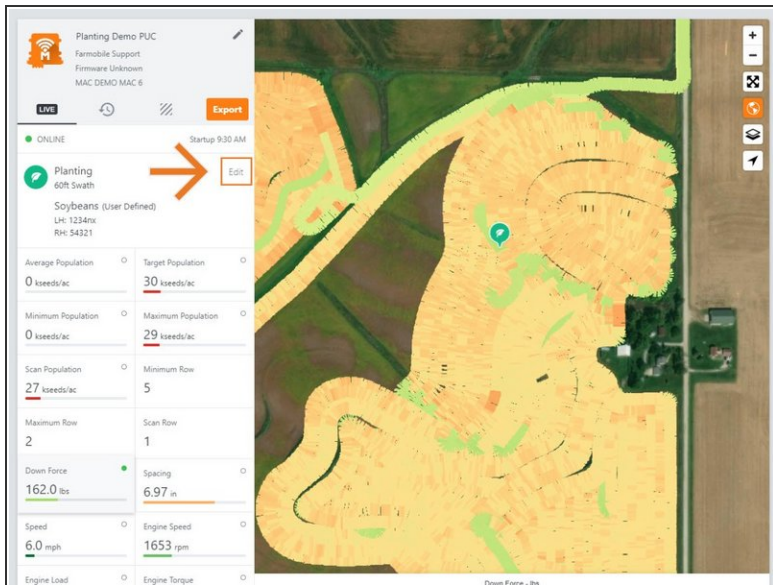
- Selecting Machines from the Farmobile DataEngine platform menu will open the Machines page with all of your Farmobile PUC device listed and displayed on the map.

Step 2 — Select a Machine



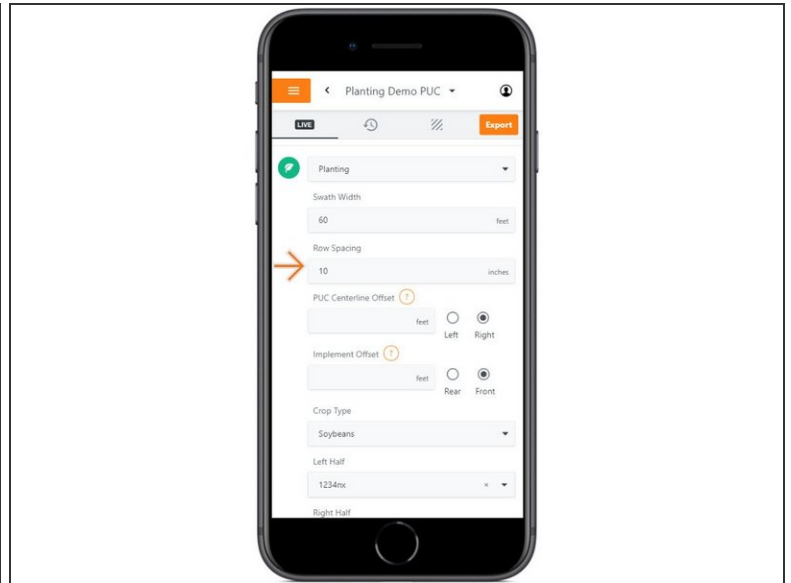
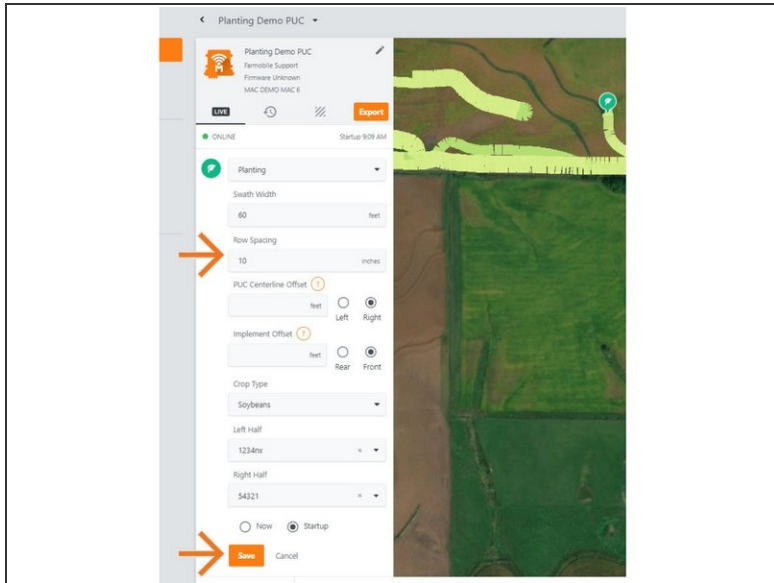
- Select a machine to open the Machine details page.

Step 3 — Select Edit



- Select edit to expand the adjustment options.
- The available options to adjust vary based on the current activity type.

Step 4 — Make Row Spacing Adjustment



- Provide in inches, your planters row spacing value.
- NOTE: The default value of 30" will be applied if another value is not provided.
- Select 'Now' or 'Startup' to apply the adjustment at the correct time.
- Select 'Save' to make the adjustment.