



# Planting - Row Spacing

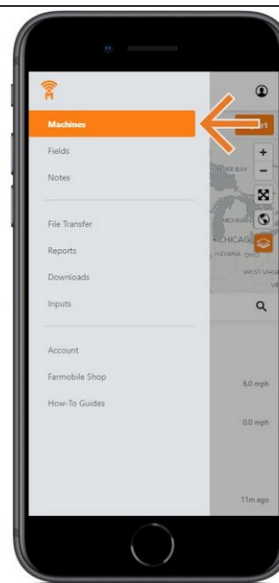
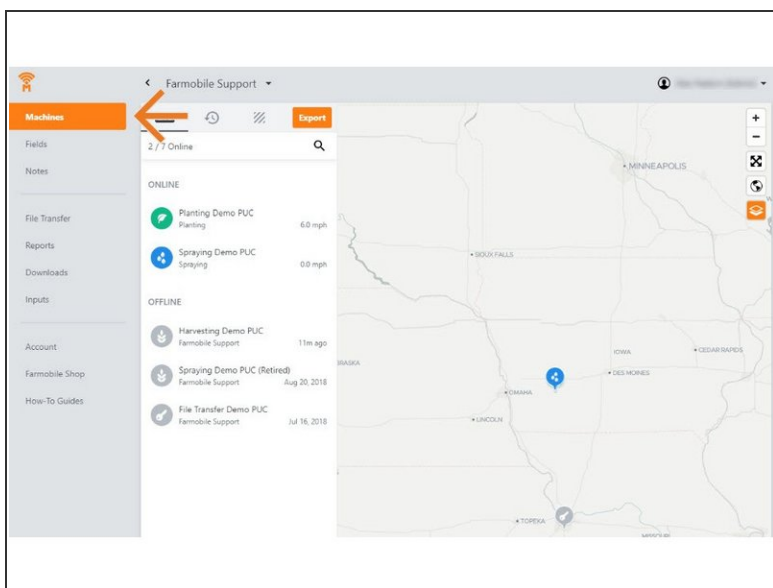
Written By: Support

The screenshot shows the Farmobile app interface for a "Planting Demo PUC". On the left is a sidebar menu with options: Machines, Fields, Notes, File Transfer, Reports, Downloads, Inputs, Account, Farmobile Shop, and How-To Guides. The "Machines" section is selected. The main area displays the machine's status as "ONLINE" with a startup time of 9:09 AM. Below this, the "Planting" mode is selected. The "Swath Width" is set to 60 feet. The "Row Spacing" is set to 10 inches and is highlighted with an orange rectangular box. Other settings include "PUC Centerline Offset" (set to 0 feet, with "Right" selected), "Implement Offset" (set to 0 feet, with "Front" selected), "Crop Type" (Soybeans), "Left Half" (1234nx), and "Right Half" (54321). At the bottom, "Now" and "Startup" modes are available, with "Startup" selected. "Save" and "Cancel" buttons are at the very bottom. The background of the app shows a satellite map of a field with yellow planting lines.

## INTRODUCTION

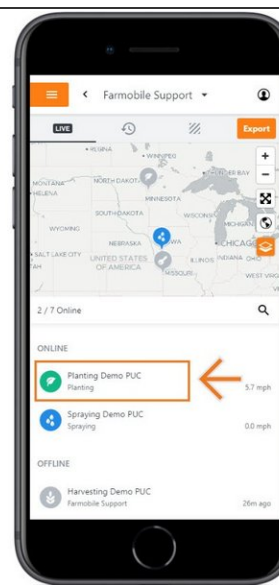
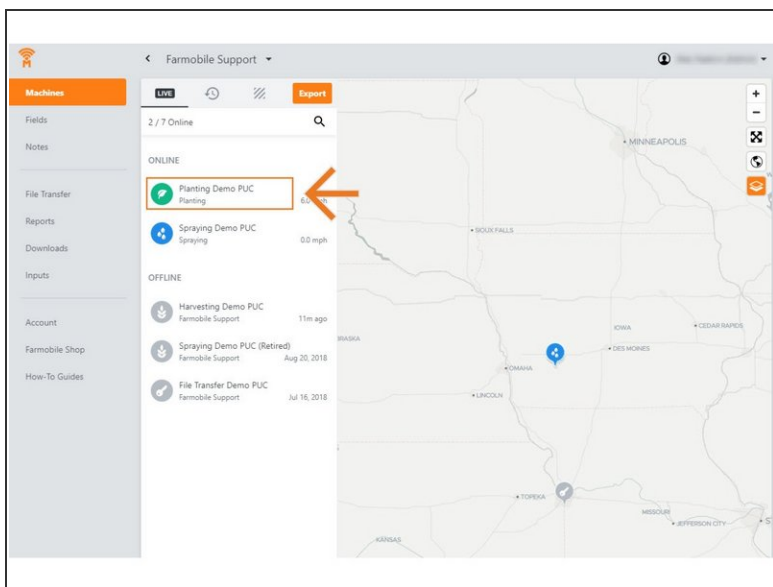
- Live Machine Adjustments are only available at the Machine level.
- Row Spacing Adjustments are only available for Planting activity.
- Row Spacing Adjustments carry forward to the end of the year or up to the next user-entered row spacing adjustment.
  - Per Farmobile PUC™ device.
- To increase the accuracy of your average population values, provide in inches the exact row spacing of your planter.
  - Default value = 30"

## Step 1 — Select Machines from the Farmobile DataEngine<sup>SM</sup> Platform



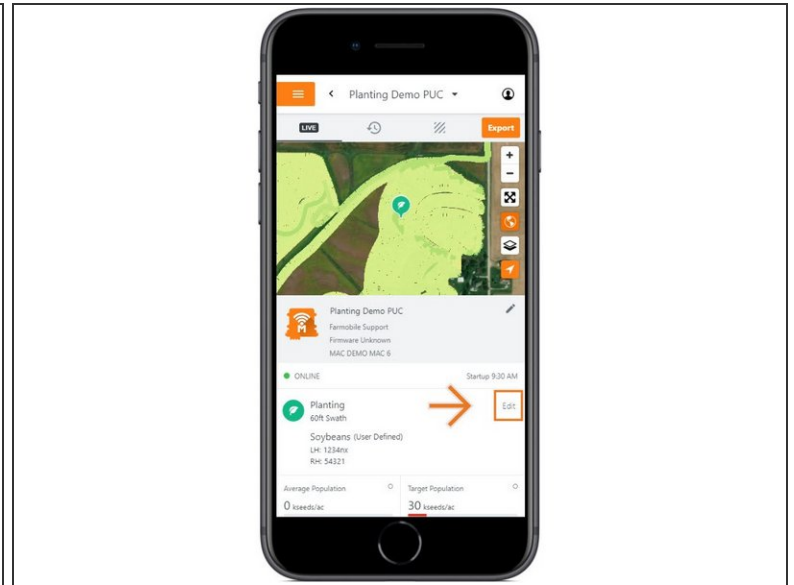
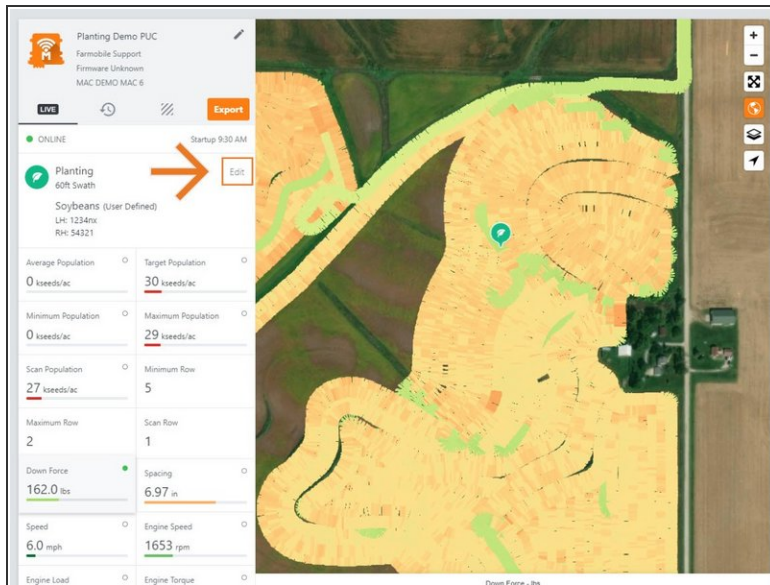
- Selecting Machines from the Farmobile DataEngine platform menu will open the Machines page with all of your Farmobile PUC device listed and displayed on the map.

## Step 2 — Select a Machine



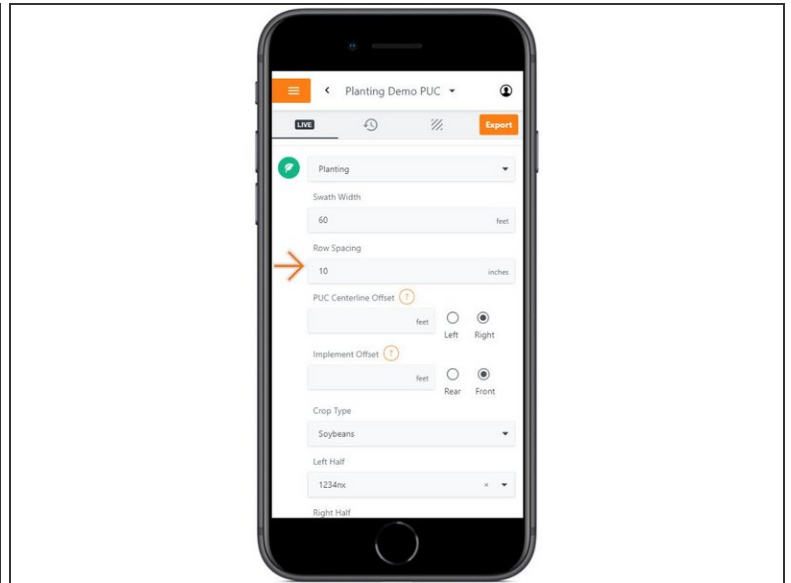
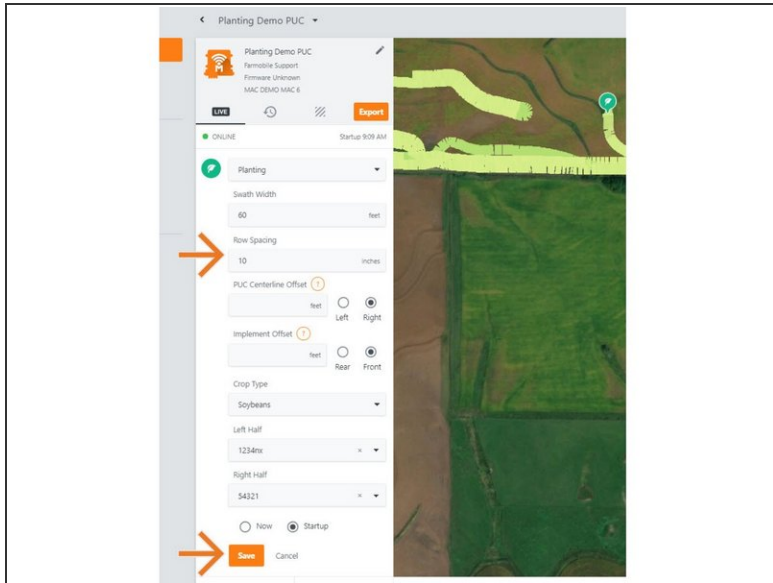
- Select a machine to open the Machine details page.

## Step 3 — Select Edit



- Select edit to expand the adjustment options.
- The available options to adjust vary based on the current activity type.

## Step 4 — Make Row Spacing Adjustment



- Provide in inches, your planters row spacing value.
- NOTE: The default value of 30" will be applied if another value is not provided.
- Select 'Now' or 'Startup' to apply the adjustment at the correct time.
- Select 'Save' to make the adjustment.