



Planting - Row Spacing

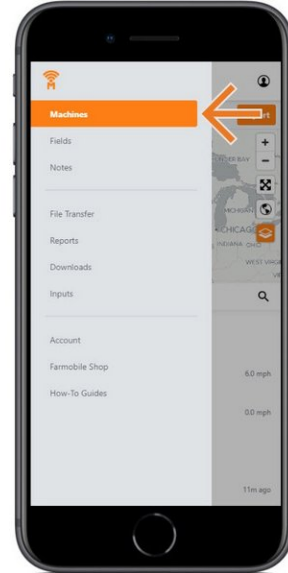
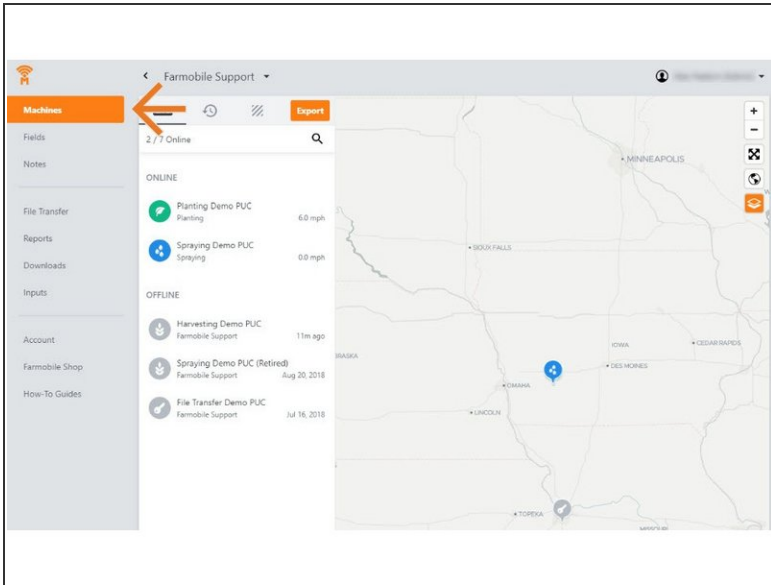
Written By: Support

A screenshot of the Farmobile app interface. On the left is a sidebar menu with options: Machines, Fields, Notes, File Transfer, Reports, Downloads, Inputs, Account, Farmobile Shop, and How-To Guides. The 'Machines' section is highlighted. The main area shows settings for 'Planting Demo PUC'. At the top, it says 'Planting Demo PUC', 'Farmobile Support', 'Firmware Unknown', and 'MAC DEMO MAC 6'. There are buttons for 'LIVE', a refresh icon, and 'Export'. Below this, it says 'ONLINE' and 'Startup 9:09 AM'. A green leaf icon is next to a 'Planting' dropdown menu. The 'Swath Width' is set to '60 feet'. The 'Row Spacing' is set to '10 inches' and is highlighted with an orange border. Below this are 'PUC Centerline Offset' and 'Implement Offset' fields, each with a question mark icon and radio buttons for 'Left/Right' and 'Rear/Front'. The 'Crop Type' is set to 'Soybeans'. There are 'Left Half' and 'Right Half' fields with 'x' icons. At the bottom, there are 'Now' and 'Startup' radio buttons, and 'Save' and 'Cancel' buttons. The background of the app shows a satellite map of a field with yellow planting lines.

INTRODUCTION

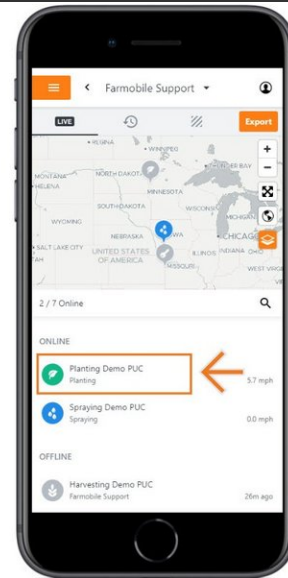
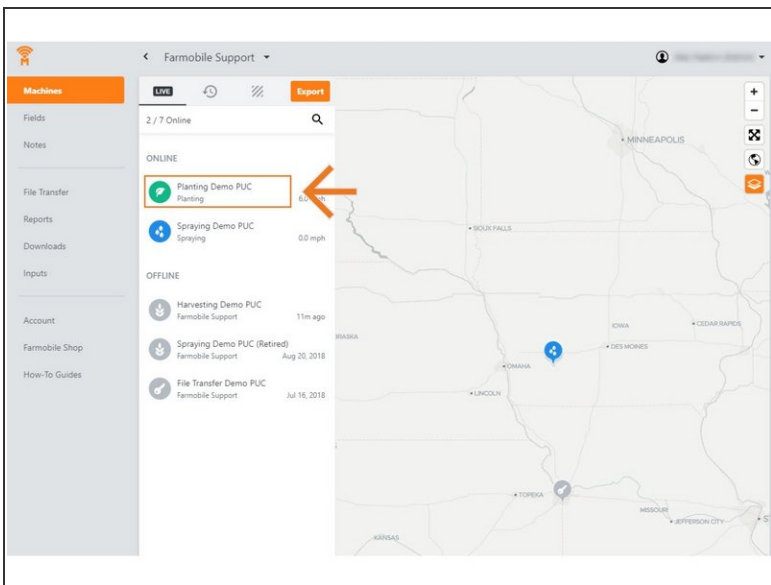
- Live Machine Adjustments are only available at the Machine level.
- Row Spacing Adjustments are only available for Planting activity.
- Row Spacing Adjustments carry forward to the end of the year or up to the next user entered row spacing adjustment.
 - Per PUC.
- To increase the accuracy of your Average Population values, provide in inches the exact row spacing of your planter.
 - Default value = 30"

Step 1 — Select Machines from the Farmobile DataEngineSM Menu



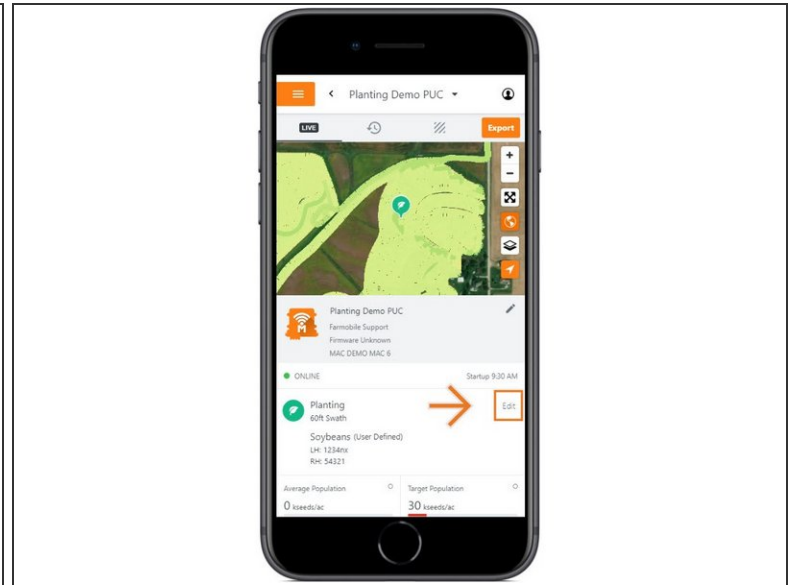
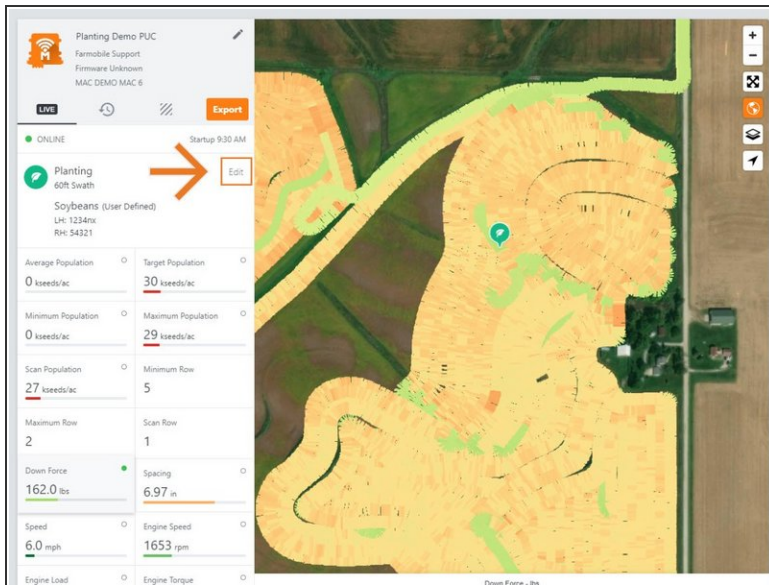
- Selecting Machines from the Farmobile DataEngine menu will open the Machines page with all of your PUCTM listed and displayed on the map.

Step 2 — Select a Machine



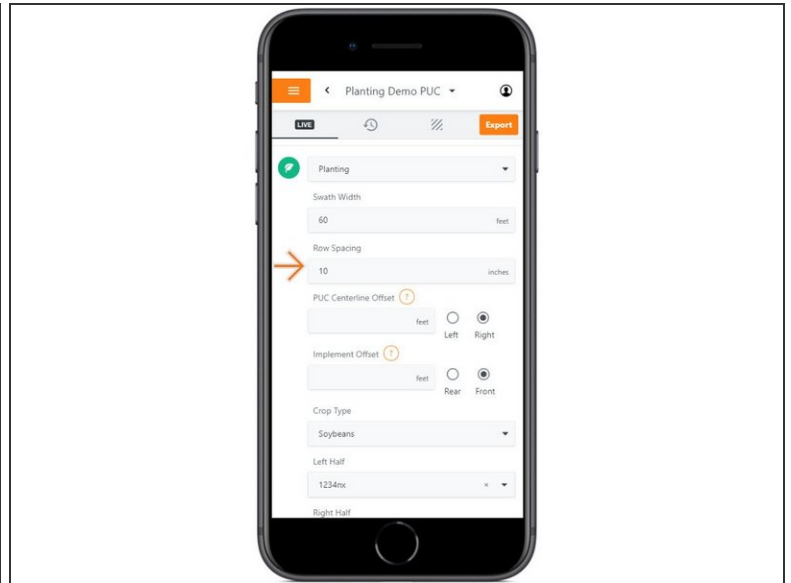
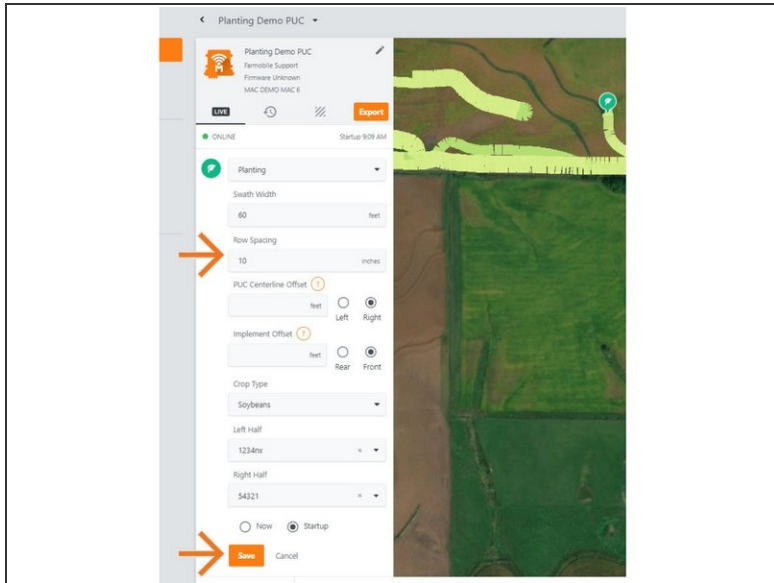
- Select a machine to open the Machine details page.

Step 3 — Select Edit



- Select edit to expand the adjustment options.
- The available options to adjust vary based on the current activity type.

Step 4 — Make Row Spacing Adjustment and Save



- Provide in inches, your planters row spacing value.
- NOTE: The default value of 30" will be applied if another value is not provided.
- Select 'Now' or 'Startup' to apply the adjustment at the correct time.
- Select 'Save' to make the adjustment.