



GPS Offsets

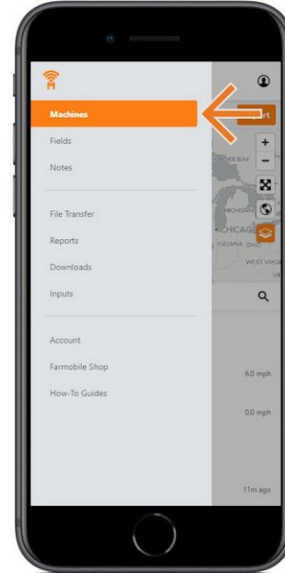
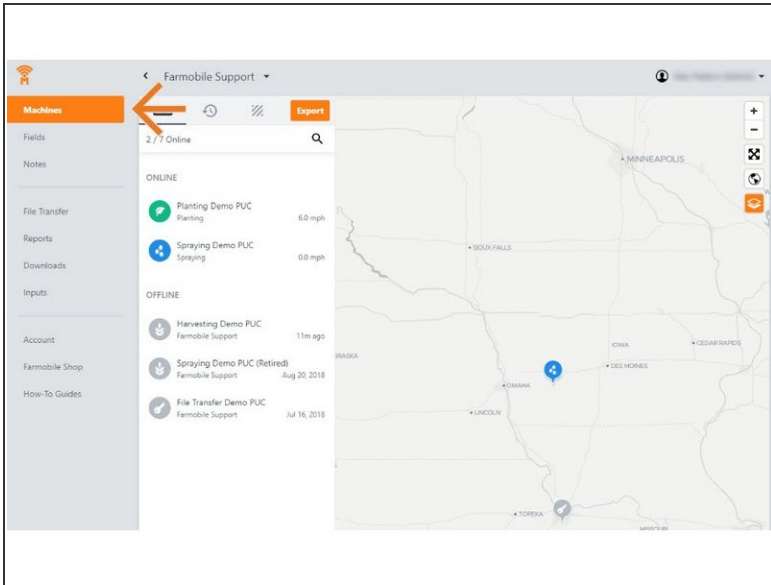
Written By: Support

The screenshot displays the Farmobile app's "Planting Demo PUC" settings screen. On the left, a sidebar contains a status bar with "ONLINE" and "Startup 9:09 AM", followed by a "Planting" dropdown menu. Below this are input fields for "Swath Width" (60 feet), "Row Spacing" (10 inches), "PUC Centerline Offset" (with a question mark icon), "Implement Offset" (with a question mark icon), "Crop Type" (Soybeans), "Left Half" (1234rx), and "Right Half" (54321). At the bottom of the sidebar are radio buttons for "Now" and "Startup", and "Save" and "Cancel" buttons. The main area shows a satellite map with a yellow line representing the planting path. A modal window titled "Implement Offset" is open, explaining that the user should enter the distance and direction of the implement from the PUC antenna. It includes a diagram of a machine with labels for "Machine Facing Forward", "Front", "Rear", and "Implement", with dashed lines indicating the "PUC Antenna" position relative to the implement. The diagram shows the antenna at the front of the machine, with arrows pointing forward, rear, and to the sides.

INTRODUCTION

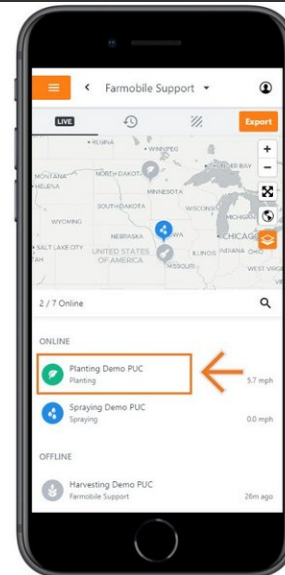
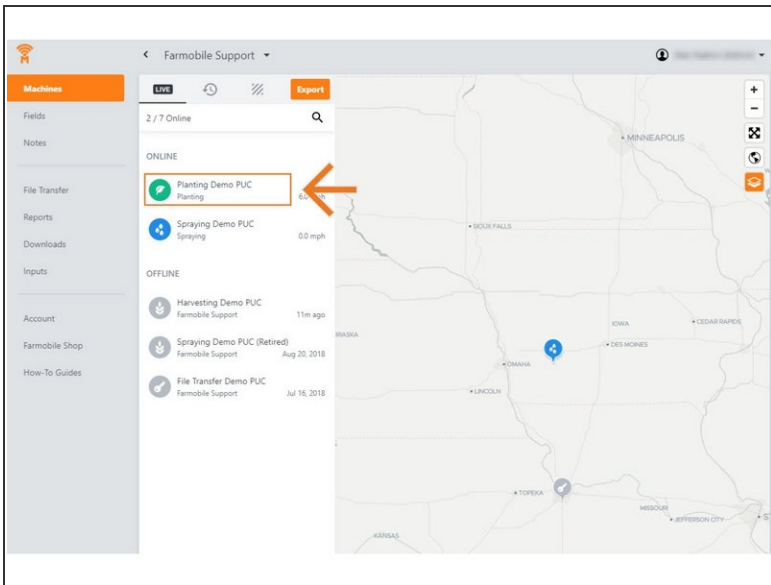
- Live Machine Adjustments are only available at the Machine level.
- GPS Offset Adjustments are available for all activity types.
- GPS Offset Adjustments carry forward to the end of the year or up to the next user-entered GPS Offset adjustment.
 - Per 'Activity' type.
 - Per Farmobile PUC™ device.
- To place your agronomic data at the right location, the following offsets are available:
 - Centerline Offset: If the antenna is not located directly in the center of the machine, provide the distance (ft.) and direction from the machine centerline.
 - Implement Offset: Enter the distance and direction your agronomic activity (e.g., toolbar or spray boom, etc) is from the antenna.

Step 1 — Select Machines from the Farmobile DataEngineSM Platform



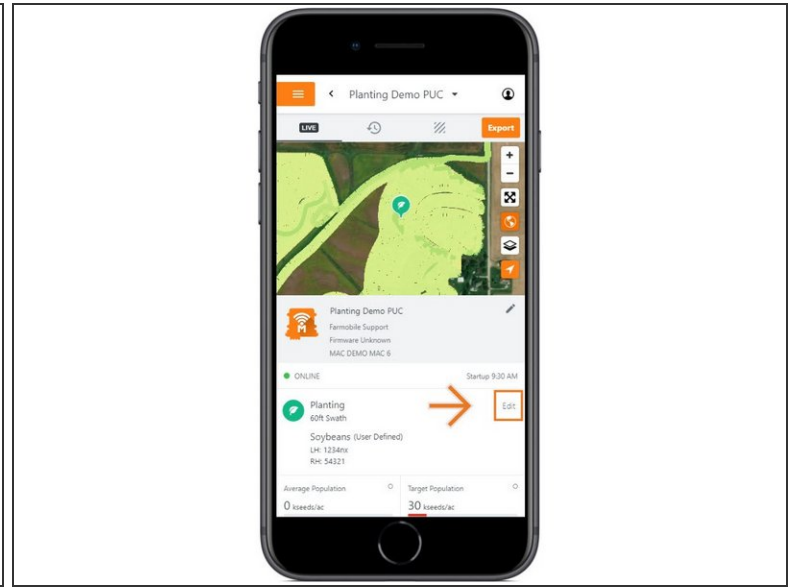
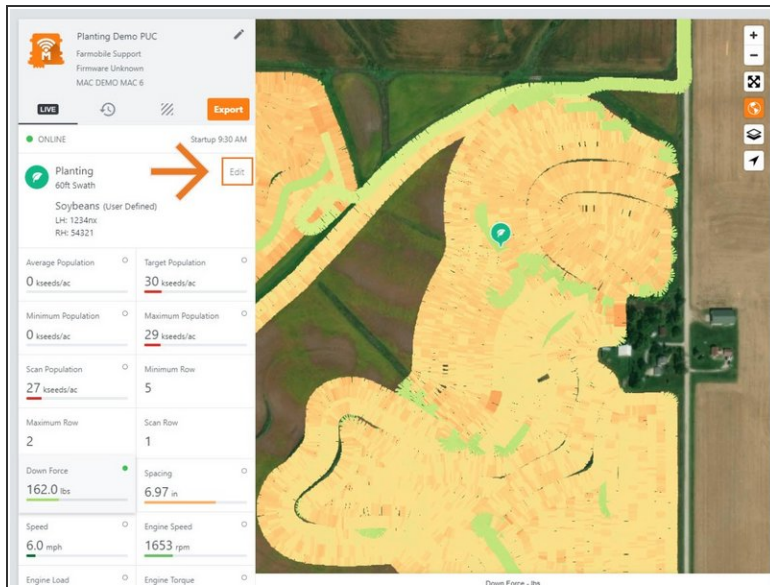
- Selecting Machines from the Farmobile DataEngine platform menu will open the Machines page with all of your Farmobile PUC device listed and displayed on the map.

Step 2 — Select a Machine



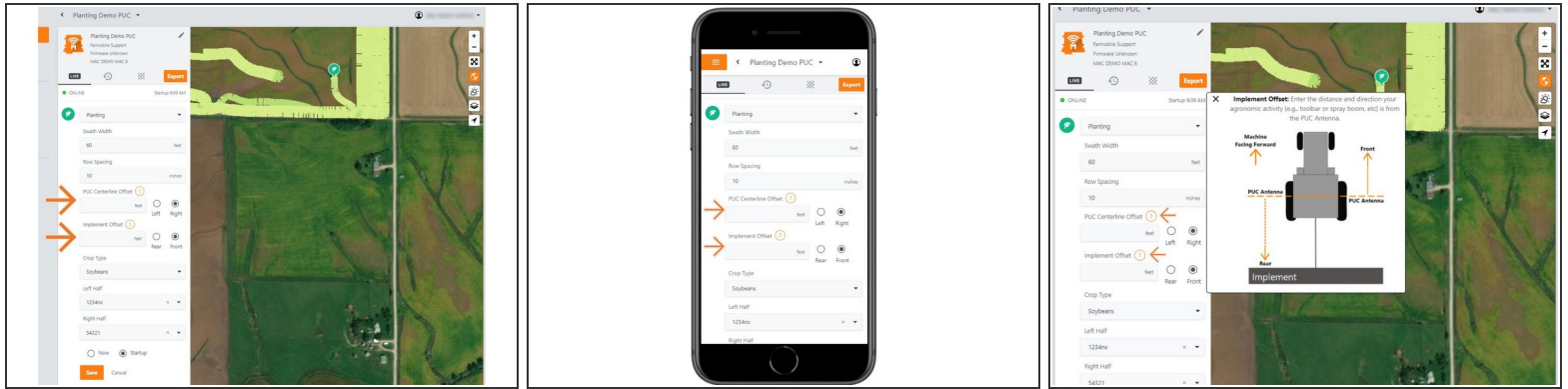
- Select a machine to open the Machine details page.

Step 3 — Select Edit



- Select edit to expand the adjustment options.
- The available options to adjust vary based on the current activity type.

Step 4 — Make GPS Offset Adjustment and Save



- Provide your offset values so we can place your agronomic data in the correct location.
- Centerline Offset: Provide the distance (ft.) and direction from the center of the machine the antenna is located.
- Implement Offset: Provide the distance and direction your agronomic activity (e.g., toolbar or spray boom, etc) is from the antenna.
- TIP: To correctly offset your antenna, select the orange question mark to view a diagram.
- Select 'Now' or 'Startup' to apply the adjustment at the correct time.
- Select 'Save' to make the adjustment.