



GPS Offsets

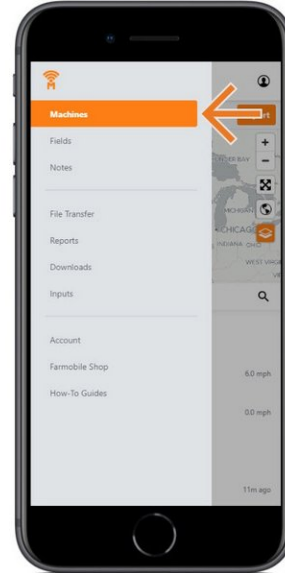
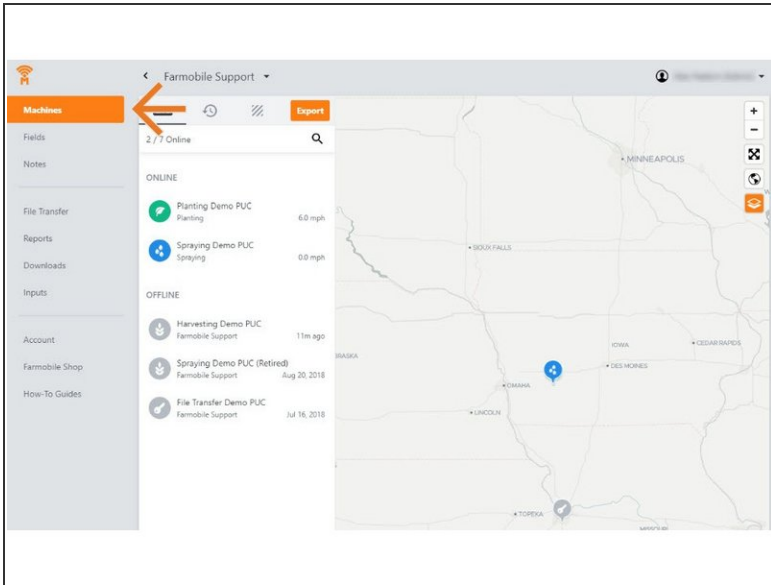
Written By: Support

The screenshot displays the Farmobile app's "Planting Demo PUC" configuration screen. On the left, a sidebar contains a status bar with "LIVE" and "Export" buttons, and a settings panel for "Planting Demo PUC" (Firmware Unknown, MAC DEMO MAC 6). The main settings area includes fields for "Swath Width" (60 feet), "Row Spacing" (10 inches), "PUC Centerline Offset" (Left/Right), "Implement Offset" (Rear/Front), "Crop Type" (Soybeans), "Left Half" (1234rx), and "Right Half" (54321). A "Save" button is at the bottom. A modal window titled "Implement Offset" is open, showing a top-down diagram of a tractor. The diagram labels the "Machine Facing Forward", "Front", "Rear", and "Implement" directions. Two "PUC Antenna" locations are marked on the tractor's chassis, one on the left and one on the right, with dashed lines indicating the offset from the implement.

INTRODUCTION

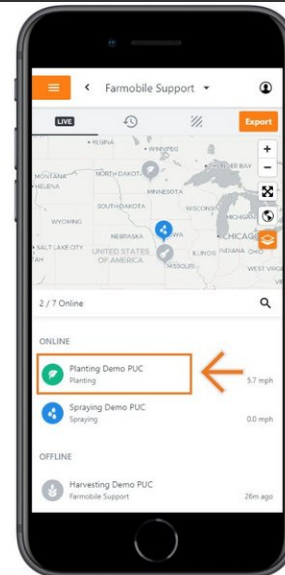
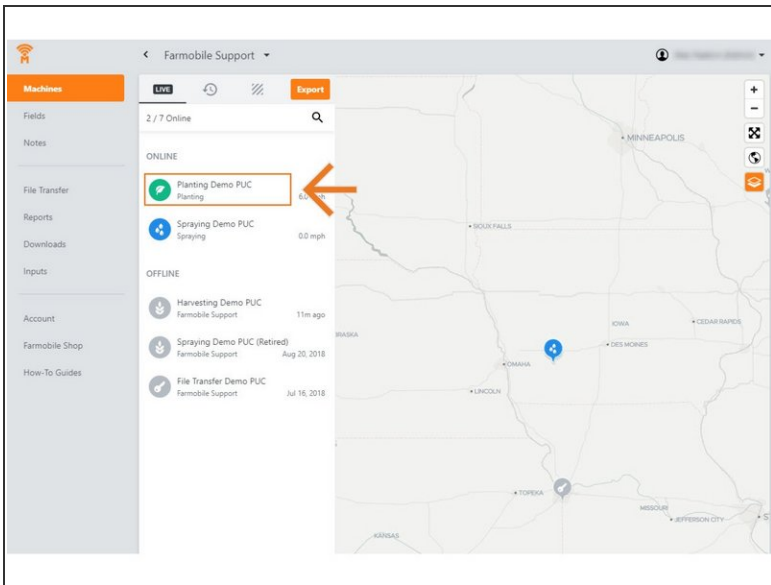
- Live Machine Adjustments are only available at the Machine level.
- GPS Offset Adjustments are available for all activity types.
- GPS Offset Adjustments carry forward to the end of the year or up to the next user entered GPS Offset adjustment.
 - Per 'Activity' type.
 - Per PUC.
- To place your agronomic data at the right location, the following offsets are available:
 - PUC Centerline Offset: If the PUC Antenna is not located directly in the center of the machine, provide the distance (ft.) and direction from the machine centerline.
 - Implement Offset: Enter the distance and direction your agronomic activity (e.g., toolbar or spray boom, etc) is from the PUC Antenna.

Step 1 — Select Machines from the Farmobile DataEngineSM Menu



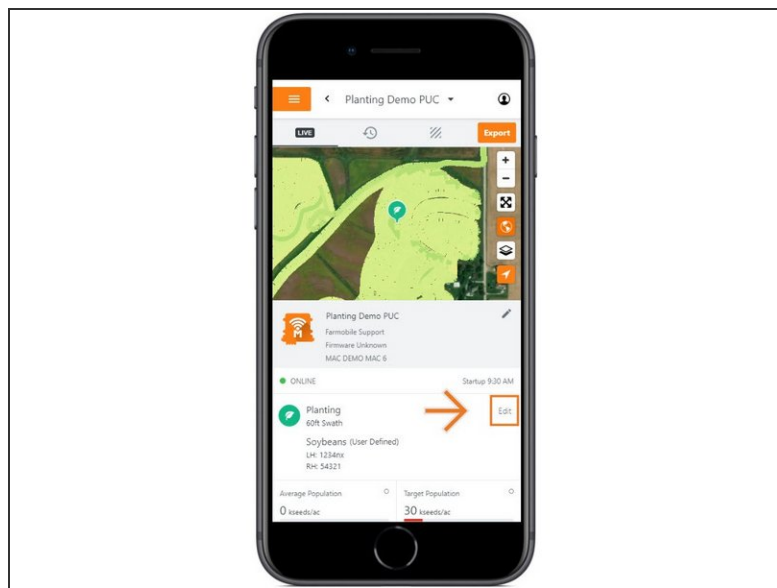
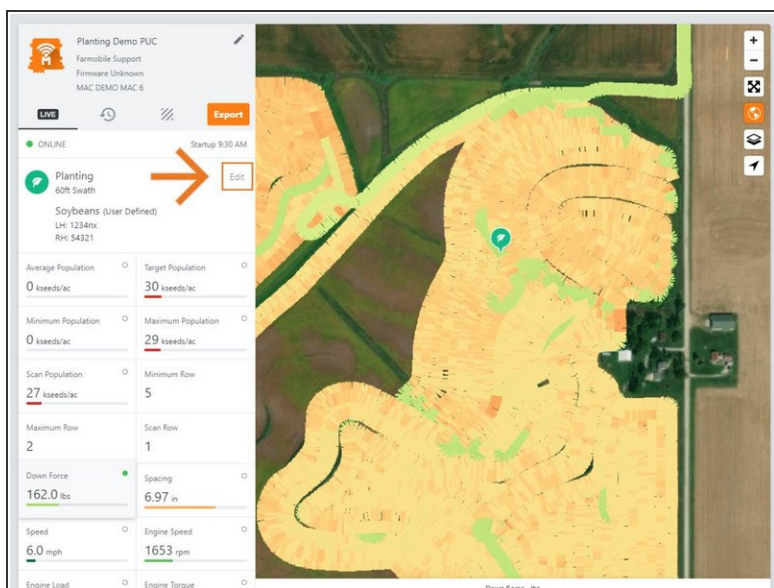
- Selecting Machines from the Farmobile DataEngine menu will open the Machines page with all of your PUCTM listed and displayed on the map.

Step 2 — Select a Machine



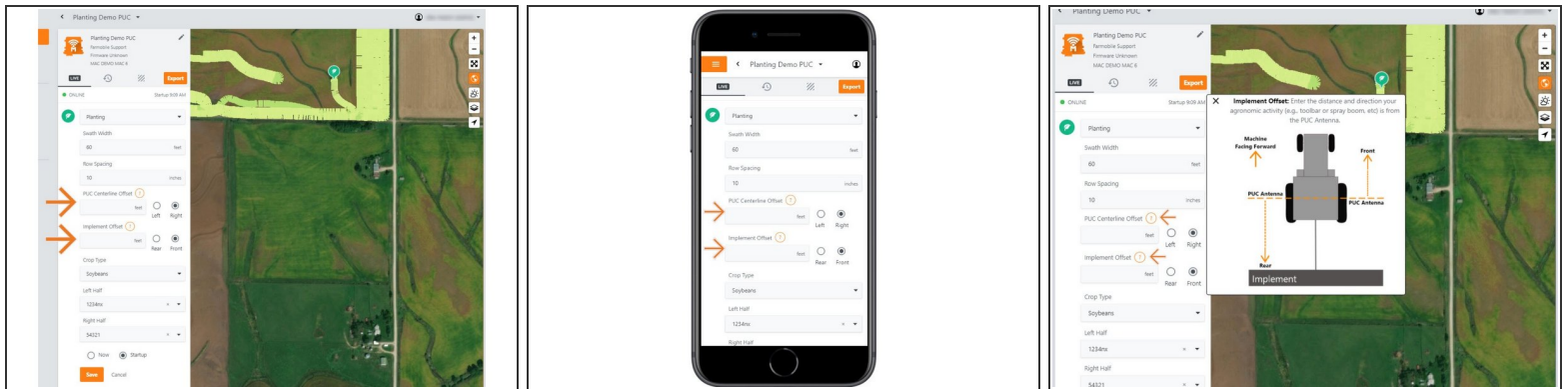
- Select a machine to open the Machine details page.

Step 3 — Select Edit



- Select edit to expand the adjustment options.
- The available options to adjust vary based on the current activity type.

Step 4 — Make GPS Offset Adjustment and Save



- Provide your offset values so we can place your agronomic data in the correct location.
- Centerline Offset: Provide the distance (ft.) and direction from the center of the machine the PUC antenna is located.
- Implement Offset: Provide the distance and direction your agronomic activity (e.g., toolbar or spray boom, etc) is from the PUC Antenna.
- TIP: To correctly offset your PUC Antenna, select the orange question mark to view a diagram.
- Select 'Now' or 'Startup' to apply the adjustment at the correct time.
- Select 'Save' to make the adjustment.